

APPROVED FRAMING, BY OTHERS
(SEE NOTE 2)

APPROVED SUBSTRATE,
BY OTHERS

CASING BEAD WITH WEEP
HOLES, BY OTHERS

DRYVIT/TREMCO APPROVED
TRANSITION MATERIAL
(SEE NOTE 1)

FLASHING, BY OTHERS

TREMCO DYMONIC® 100
(SEE NOTE 1)

DRYVIT/TREMCO
AIR/WATER-RESISTIVE BARRIER

PAPER BACKING, BY OTHERS

OPTIONAL 1" MAX. EPS OR XPS
INSULATION, BY OTHERS
(SEE NOTE 3)

METAL PLASTER BASE AS SPECIFIED,
BY OTHERS

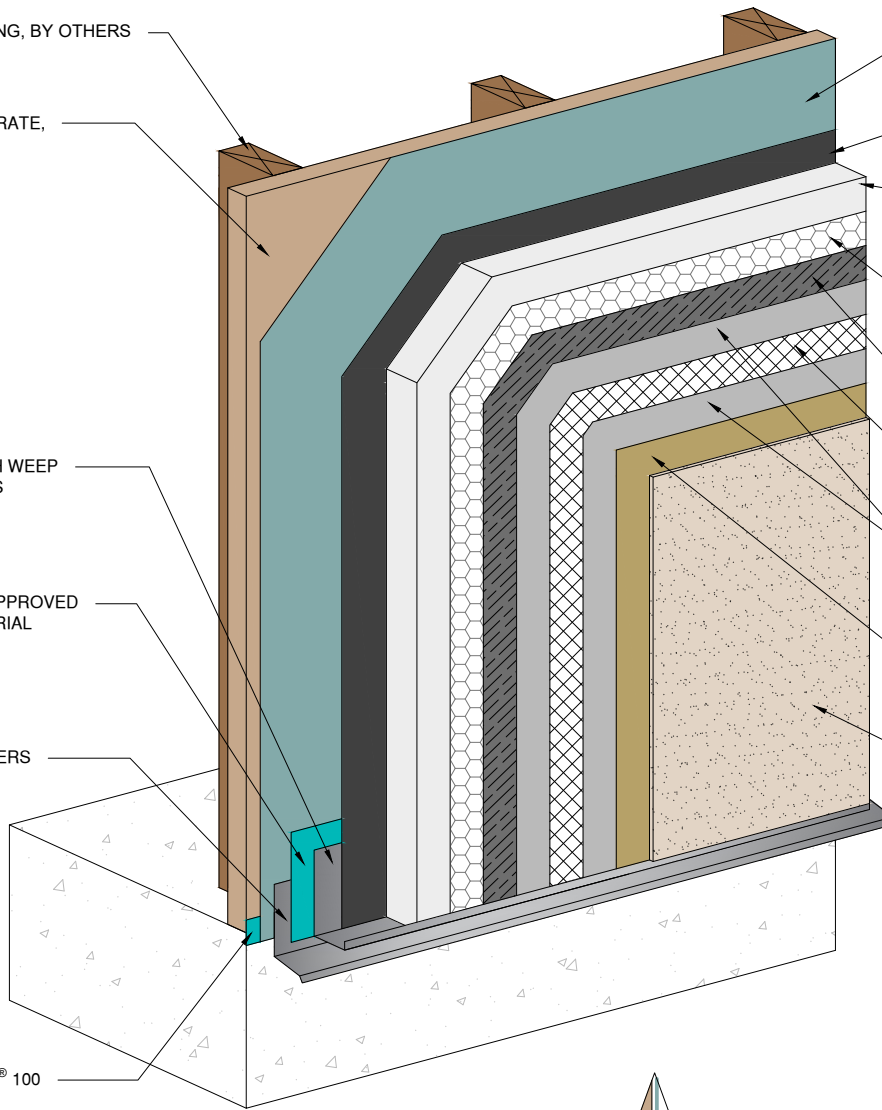
STUCCOAT ONE COAT BASE, 3/8" MIN.

OPTIONAL STANDARD REINFORCING
MESH, AS SPECIFIED OR REQUIRED

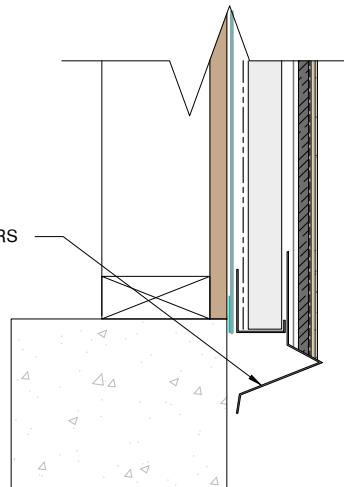
STUCCOAT CRACK ISOLATION
MEMBRANE, AS SPECIFIED OR
REQUIRED

OPTIONAL DRYVIT PRIMER,
AS SPECIFIED OR REQUIRED

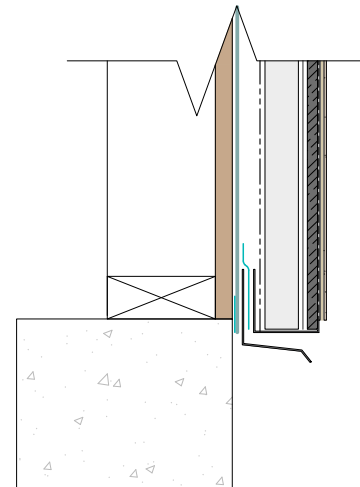
DRYVIT FINISH



WEEP SCREED, BY OTHERS



WEEP SCREED OPTION SECTION DETAIL



SECTION DETAIL

NOTE:

1. REFER TO PRODUCT DATA SHEETS FOR SPECIFIC APPLICATION METHODS.

2. WALL ASSEMBLY SHALL PROVIDE FOR A MAXIMUM DESIGN DEFLECTION OF L/360.

3. OPTIONAL CONTINUOUS INSULATION BOARD SHALL HAVE MINIMUM 1/4" WIDE x 1/8" DEEP GROOVES SPACED 12" ON CENTER. GROOVES SHALL BE ORIENTATED VERTICALLY WHEN INSTALLED. JOINTS SHALL BE 1/8" OR LESS AND CLOSED ON THE EXTERIOR SIDE USING MINIMUM 2 3/8" WIDE FIBERGLASS MESH TAPE.

The architecture, engineering, and design of the project using the Dryvit and Tremco products are the responsibility of the project's design professional. All products and systems must comply with local building codes and standards. This detail is for general information and guidance only and Dryvit and Tremco specifically disclaims any liability for the use of this detail. The project design professional determines, in its sole discretion, whether this detail or a functionally equivalent detail is best suited for the project. This detail is subject to change without notice. Contact Dryvit and Tremco to ensure you have the most recent version.

StucCoat One Coat® System



Detail: StucCoat One Coat System with Continuous Insulation

File Name:

Drawn by: KAB

Checked by: BD/CB

Scale: NTS

Date: 4/2023

SCOC CI 1



www.tremcocpg.com