

## Fedderlite<sup>®</sup> Panel System Installation Details

# Table of Contents

---

## Detail

---

FEDDERLITE CHANNEL AND MOUNTING PLATE	FL 01
PANEL SYSTEM	FL 02
PANEL SYSTEM - HIGH IMPACT OPTION	FL 03
PANEL VERTICAL JOINT -	FL 04
STAGGERED CHANNEL OPTION	
BACK VIEW - STAGGERED CHANNEL OPTION	FL 05
PANEL VERTICAL JOINT - ALIGNED CHANNEL	FL 06
WITH MOUNTING PLATE OPTION	
BACK VIEW - ALIGNED CHANNEL WITH	FL 07
MOUNTING PLATE OPTION	
PANEL VERTICAL JOINT - BACK FASTENED	FL 08
METHOD	
BACK VIEW - BACK FASTENED METHOD	FL 09
ADHESIVE ATTACHMENT METHODS	FL 10
FOR PANELS LESS THAN 4'-0" WIDE	
ADHESIVE ATTACHMENT METHODS	FL 11
FOR PANELS GREATER THAN 4'-0" WIDE	
FASTENING METHODS - FIELD OF PANEL	FL 12
HORIZONTAL SHIPLAP JOINT WITH DRAINAGE	FL 13
HORIZONTAL JOINT WITH DRAINAGE	FL 14
HORIZONTAL SHIPLAP JOINT	FL 15
HORIZONTAL JOINT	FL 16
PARAPET	FL 17
FOUNDATION AT GRADE - FLUSH SUBSTRATE	FL 18
FOUNDATION AT GRADE - RECESSED SUBSTRATE	FL 19
HEAD	FL 20
JAMB	FL 21
SILL	FL 22
TRANSITION AT FASCIA/SOFFIT	FL 23
INTERSECTION - INSULATED	
TRANSITION AT FASCIA/SOFFIT	FL 24
INTERSECTION - UNINSULATED	
TYPICAL AESTHETIC REVEALS	FL 25
TERMINATION AT DISSIMILAR MATERIALS	FL 26
INSIDE CORNER JOINT	FL 27
OUTSIDE CORNER JOINT	FL 28
INSIDE CORNER PANEL	FL 29
OUTSIDE CORNER PANEL	FL 30
FACE FASTENING TO SOLID SUBSTRATE	FL 31
PENETRATION	FL 32

### NOTE:

DRYVIT MAKES NO REPRESENTATION REGARDING CONFORMITY OF ITS SUGGESTIONS TO MODEL BUILDING CODES, ENGINEERING CRITERIA, SPECIFIC APPLICATIONS, OR PROJECT LOCATIONS. ALL COMPONENTS INDICATED IN ILLUSTRATIONS, AS WELL AS OTHERS THAT MAY BE REQUIRED FOR THE INTEGRITY OF THE SYSTEM SHALL BE DESIGNED, DETAILED, AND ENGINEERED BY REPRESENTATIVES OF THE ARCHITECT, OWNER, OR CONTRACTOR TO BE IN CONFORMANCE WITH MODEL CODES, ARCHITECTURAL, AND ENGINEERING REQUIREMENTS PERTAINING TO SPECIFIC BUILDING PROJECTS.

DRYVIT MAKES NO WARRANTY, EXPRESSED OR IMPLIED, AS TO THE ARCHITECTURAL DESIGN, ENGINEERING, OR WORKMANSHIP OF PROJECTS UTILIZING DRYVIT SYSTEMS OR PRODUCTS.

THE LIABILITIES OF DRYVIT SHALL BE AS STATED IN THE DRYVIT STANDARD WARRANTY. CONTACT DRYVIT FOR A FULL AND COMPLETE COPY OF THE WARRANTY.

The architecture, engineering, and design of the project using the Dryvit and Tremco products are the responsibility of the project's design professional. All products and systems must comply with local building codes and standards. This detail is for general information and guidance only and Dryvit and Tremco specifically disclaims any liability for the use of this detail. The project design professional determines, in its sole discretion, whether this detail or a functionally equivalent detail is best suited for the project. This detail is subject to change without notice. Contact Dryvit or Tremco to ensure you have the most recent version.

### Fedderlite® Panel System



Dryvit Technical Support: 800-556-7752

Detail: Fedderlite® Panel System Installation Details

Drawn by: HDE

Checked by: RB  
CW

Scale: NTS

Date: 9/28/2023

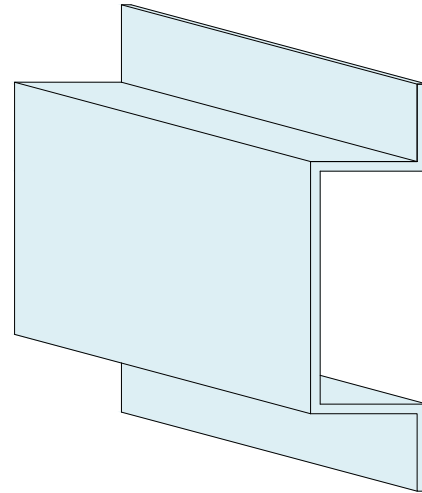
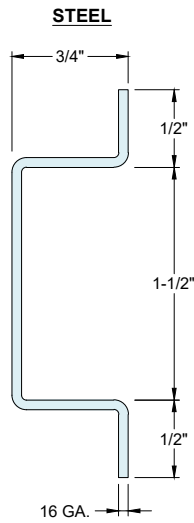
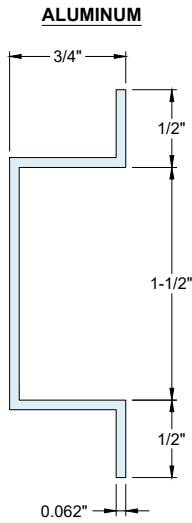
File Name:

Table of Contents



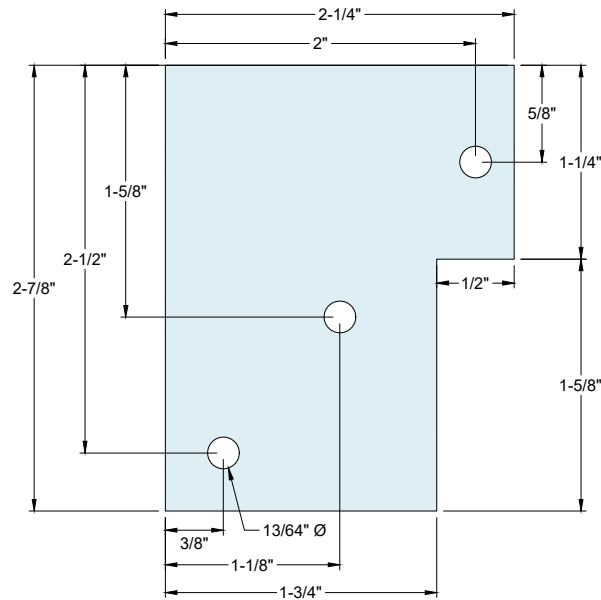
Construction Products Group

[www.tremcocpg.com](http://www.tremcocpg.com)



**FEDDERLITE CHANNEL SECTION VIEW**

**FEDDERLITE CHANNEL ISOMETRIC VIEW**



**MOUNTING PLATE OPTION (SEE NOTE 1)**

**NOTES:**

1. MOUNTING PLATE OPTION ELIMINATES THE NEED TO STAGGER THE FEDDERLITE CHANNELS. SEE DETAILS FL 06 AND FL 07.

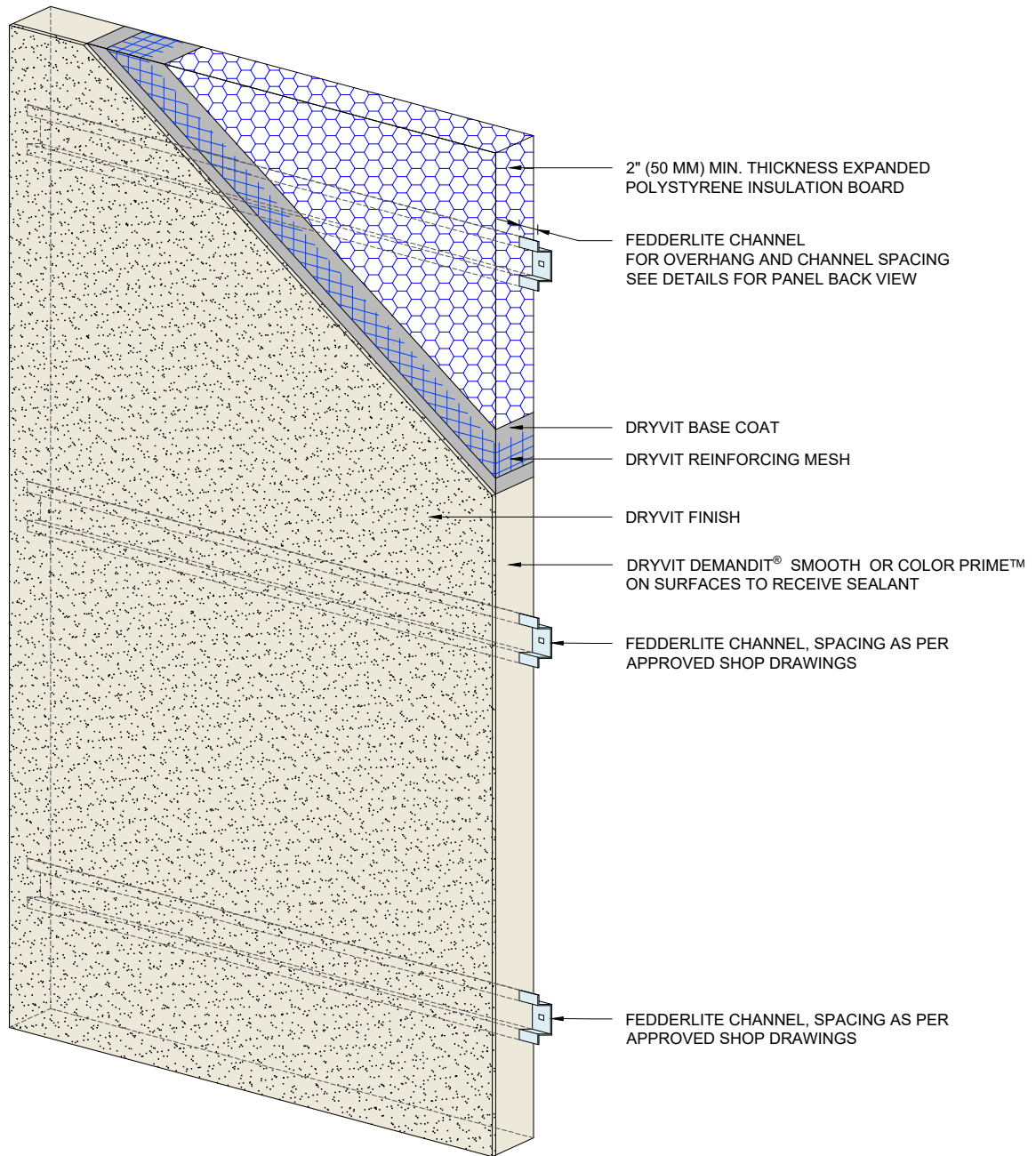
The architecture, engineering, and design of the project using the Dryvit and Tremco products are the responsibility of the project's design professional. All products and systems must comply with local building codes and standards. This detail is for general information and guidance only and Dryvit and Tremco specifically disclaims any liability for the use of this detail. The project design professional determines, in its sole discretion, whether this detail or a functionally equivalent detail is best suited for the project. This detail is subject to change without notice. Contact Dryvit or Tremco to ensure you have the most recent version.

**Fedderlite® Panel System**



Detail: Fedderlite® Channel and Mounting Plate				File Name:	
Drawn by: HDE	Checked by: RB CW	Scale: NTS	Date: 9/28/2023	FL 01	
<a href="http://www.tremcocpg.com">www.tremcocpg.com</a>					





**NOTES:**

1. DRYVIT RECOMMENDS THAT GROUND FLOOR APPLICATIONS AND ALL FACADES EXPOSED TO ABNORMAL STRESS, HIGH TRAFFIC, OR DELIBERATE IMPACT HAVE THE BASE COAT REINFORCED WITH PANZER® MESH PRIOR TO STANDARD OR STANDARD PLUS MESH. LOCATION OF HIGH IMPACT ZONES SHOULD BE INDICATED ON CONTRACT DRAWINGS.
2. REFER TO DRYVIT PUBLICATION DS840 FOR AWRB AND FLASHING APPLICATION.

*The architecture, engineering, and design of the project using the Dryvit and Tremco products are the responsibility of the project's design professional. All products and systems must comply with local building codes and standards. This detail is for general information and guidance only and Dryvit and Tremco specifically disclaims any liability for the use of this detail. The project design professional determines, in its sole discretion, whether this detail or a functionally equivalent detail is best suited for the project. This detail is subject to change without notice. Contact Dryvit or Tremco to ensure you have the most recent version.*

**Fedderlite® Panel System**



Dryvit Technical Support: 800-556-7752

Detail: Panel System

Drawn by: HDE

Checked by: RB  
CW

Scale: NTS

Date: 9/28/2023

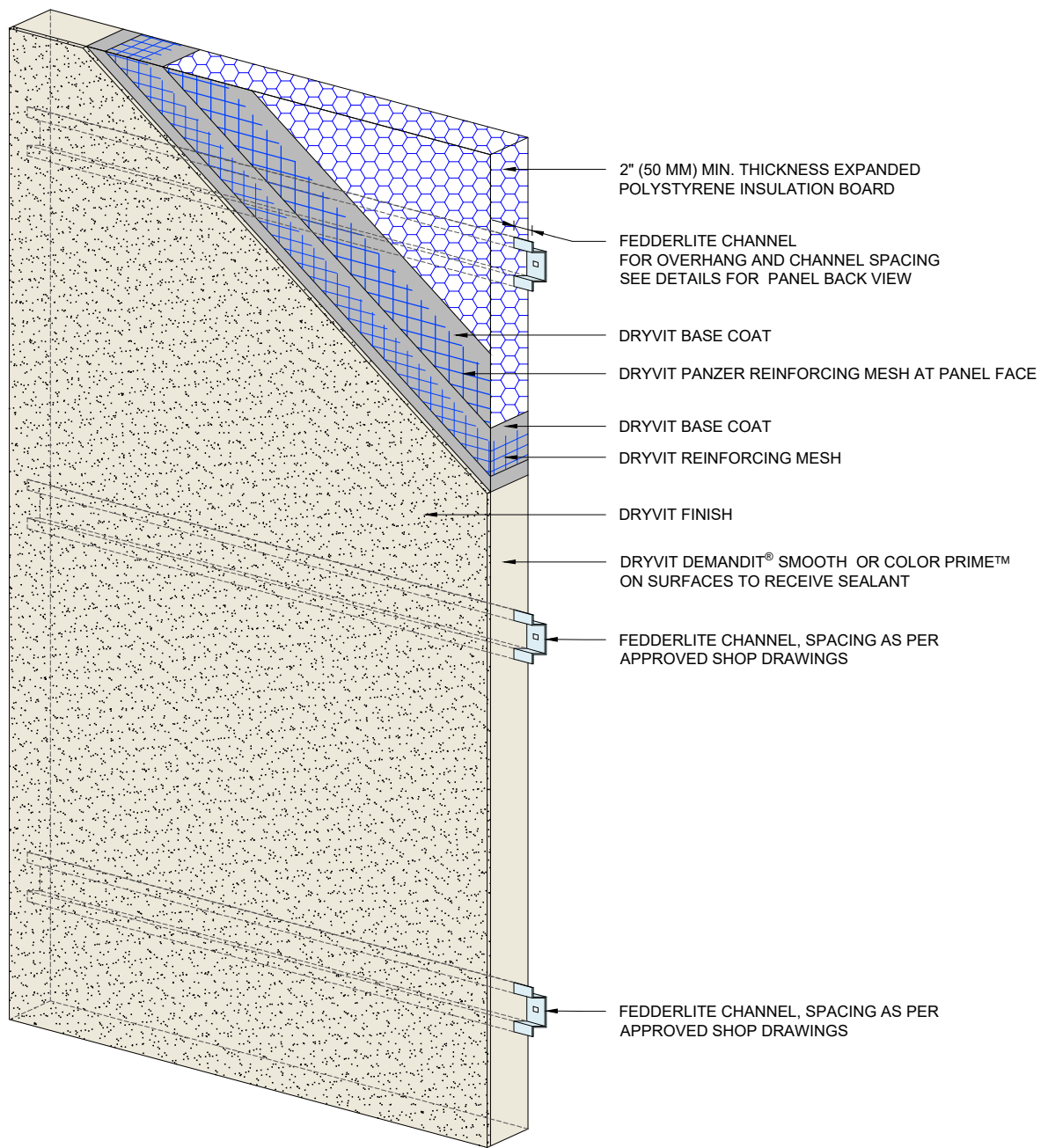
File Name:

FL 02



Construction Products Group

www.tremcocpg.com



2" (50 MM) MIN. THICKNESS EXPANDED POLYSTYRENE INSULATION BOARD

FEDDERLITE CHANNEL FOR OVERHANG AND CHANNEL SPACING SEE DETAILS FOR PANEL BACK VIEW

DRYVIT BASE COAT

DRYVIT PANZER REINFORCING MESH AT PANEL FACE

DRYVIT BASE COAT

DRYVIT REINFORCING MESH

DRYVIT FINISH

DRYVIT DEMANDIT® SMOOTH OR COLOR PRIME™ ON SURFACES TO RECEIVE SEALANT

FEDDERLITE CHANNEL, SPACING AS PER APPROVED SHOP DRAWINGS

FEDDERLITE CHANNEL, SPACING AS PER APPROVED SHOP DRAWINGS

NOTES:

1. DRYVIT RECOMMENDS THAT GROUND FLOOR APPLICATIONS AND ALL FACADES EXPOSED TO ABNORMAL STRESS, HIGH TRAFFIC, OR DELIBERATE IMPACT HAVE THE BASE COAT REINFORCED WITH PANZER® MESH PRIOR TO STANDARD OR STANDARD PLUS MESH. LOCATION OF HIGH IMPACT ZONES SHOULD BE INDICATED ON CONTRACT DRAWINGS.
2. REFER TO DRYVIT PUBLICATION DS840 FOR AWRB AND FLASHING APPLICATION.

*The architecture, engineering, and design of the project using the Dryvit and Tremco products are the responsibility of the project's design professional. All products and systems must comply with local building codes and standards. This detail is for general information and guidance only and Dryvit and Tremco specifically disclaims any liability for the use of this detail. The project design professional determines, in its sole discretion, whether this detail or a functionally equivalent detail is best suited for the project. This detail is subject to change without notice. Contact Dryvit or Tremco to ensure you have the most recent version.*

Fedderlite® Panel System



Dryvit Technical Support: 800-556-7752

Detail: Panel System - High Impact Option

Drawn by: HDE

Checked by: RB  
CW

Scale: NTS

Date: 9/28/2023

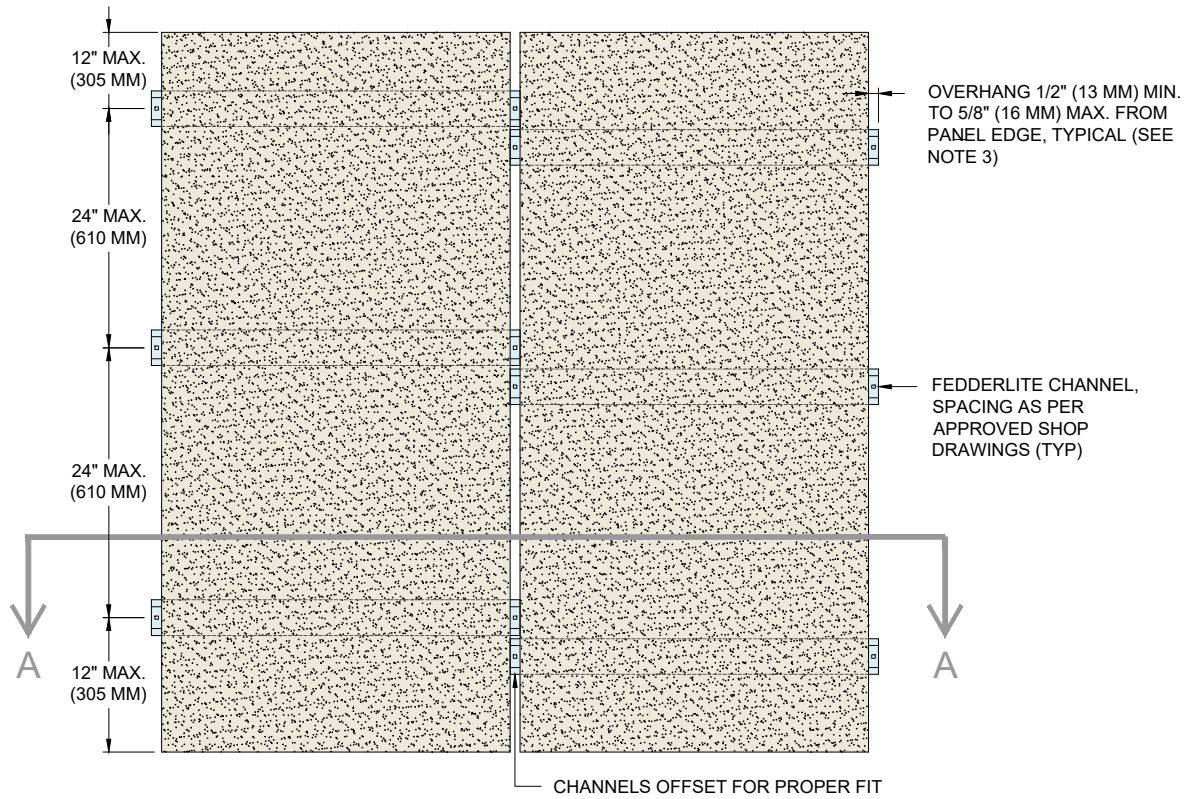
File Name:

FL 03

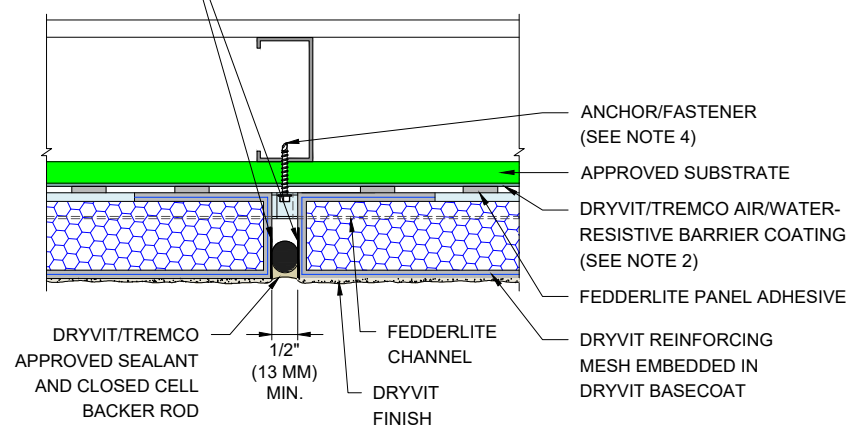


Construction Products Group

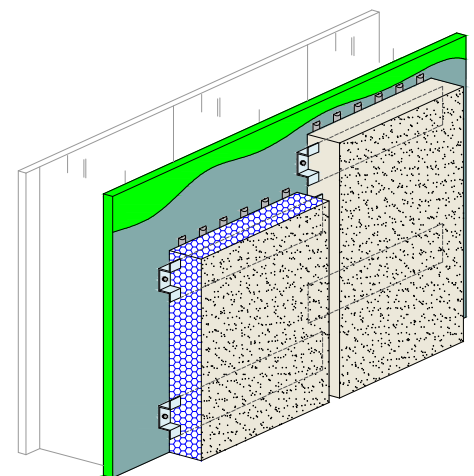
www.tremcocpg.com



DRYVIT DEMANDIT®  
SMOOTH OR COLOR  
PRIME™ ON SURFACES  
TO RECEIVE SEALANT



**SECTION A**



**FRONT VIEW**

**NOTES:**

1. DRYVIT RECOMMENDS THAT GROUND FLOOR APPLICATIONS AND ALL FACADES EXPOSED TO ABNORMAL STRESS, HIGH TRAFFIC, OR DELIBERATE IMPACT HAVE THE BASE COAT REINFORCED WITH PANZER® MESH PRIOR TO STANDARD OR STANDARD PLUS MESH. LOCATION OF HIGH IMPACT ZONES SHOULD BE INDICATED ON CONTRACT DRAWINGS.
2. REFER TO DRYVIT PUBLICATION DS840 FOR AWRB AND FLASHING APPLICATION
3. FOR FACE FASTENING ACCESS, ALLOW CHANNELS TO EXTEND PAST PANEL EDGES 1/2" (13MM) MIN. TO 5/8" (16MM) MAX.
4. MECHANICAL ATTACHMENTS ARE NECESSARY TO SUPPORT THE PANEL UNTIL THE ADHESIVE CURES. REFER TO DRYVIT PUBLICATION DS217.

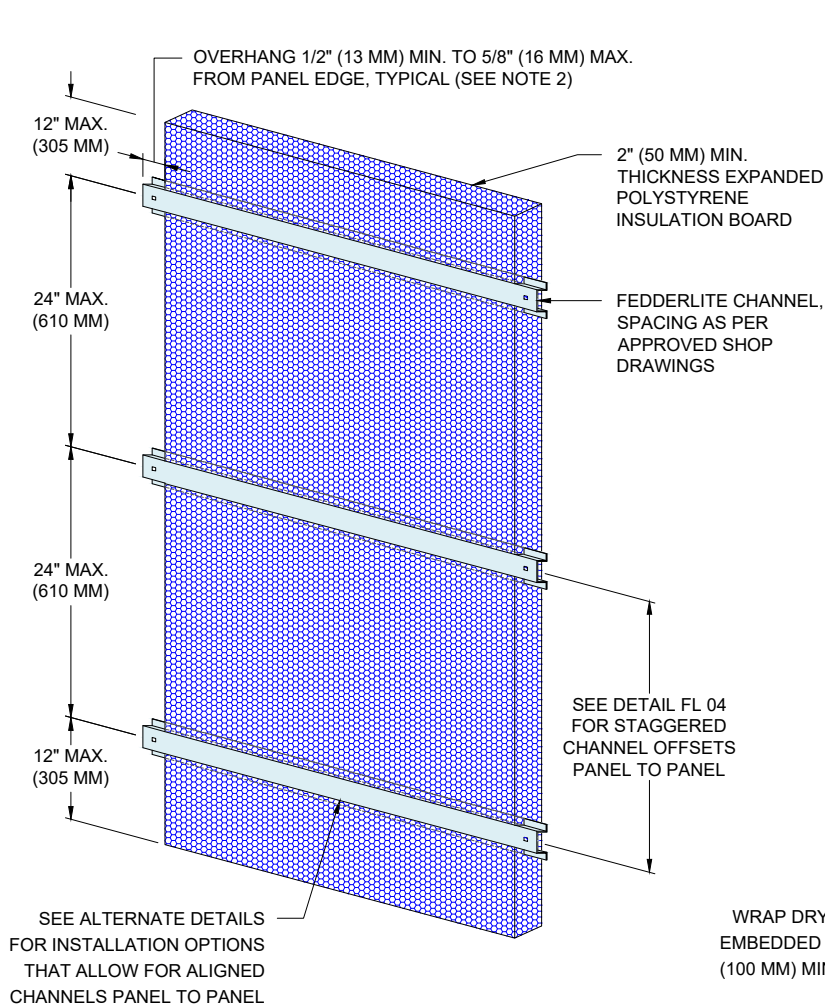
*The architecture, engineering, and design of the project using the Dryvit and Tremco products are the responsibility of the project's design professional. All products and systems must comply with local building codes and standards. This detail is for general information and guidance only and Dryvit and Tremco specifically disclaims any liability for the use of this detail. The project design professional determines, in its sole discretion, whether this detail or a functionally equivalent detail is best suited for the project. This detail is subject to change without notice. Contact Dryvit or Tremco to ensure you have the most recent version.*

**Fedderlite® Panel System**

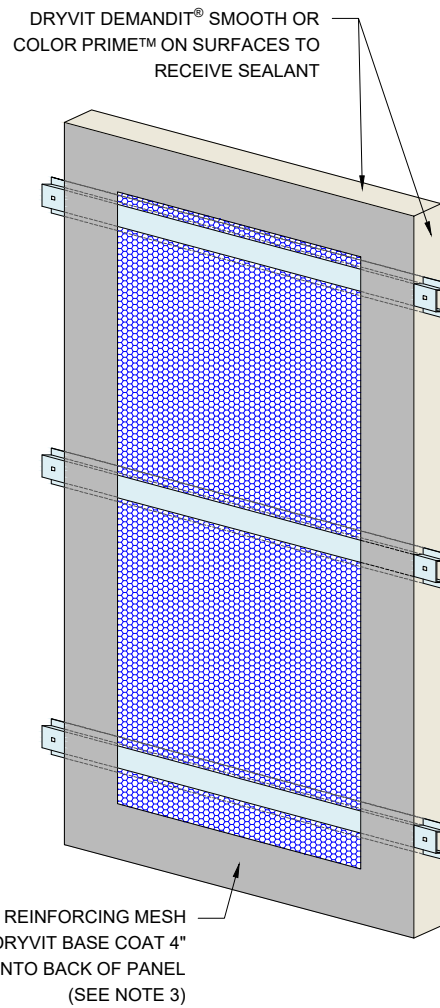


Detail: Panel Vertical Joint - Staggered Channel Option				File Name:	
Drawn by: HDE	Checked by: RB CW	Scale: NTS	Date: 9/28/2023	FL 04	





**BACK VIEW - STEP 1**



**BACK VIEW - STEP 2**

**NOTES:**

1. DRYVIT RECOMMENDS THAT GROUND FLOOR APPLICATIONS AND ALL FACADES EXPOSED TO ABNORMAL STRESS, HIGH TRAFFIC, OR DELIBERATE IMPACT HAVE THE BASE COAT REINFORCED WITH PANZER® MESH PRIOR TO STANDARD OR STANDARD PLUS MESH. LOCATION OF HIGH IMPACT ZONES SHOULD BE INDICATED ON CONTRACT DRAWINGS.
2. FOR FACE FASTENING ACCESS, ALLOW CHANNELS TO EXTEND PAST PANEL EDGES MIN. 1/2" (13MM) TO MAX. 5/8" (16MM).
3. WHEN INSTALLATION RESULTS IN A CONTINUOUS AIR SPACE BETWEEN THE PANEL AND THE WALL GREATER THAN 1/8" (3MM), THE ENTIRE PANEL NEEDS TO BE ENCAPSULATED WITH THE REINFORCED BASE COAT.

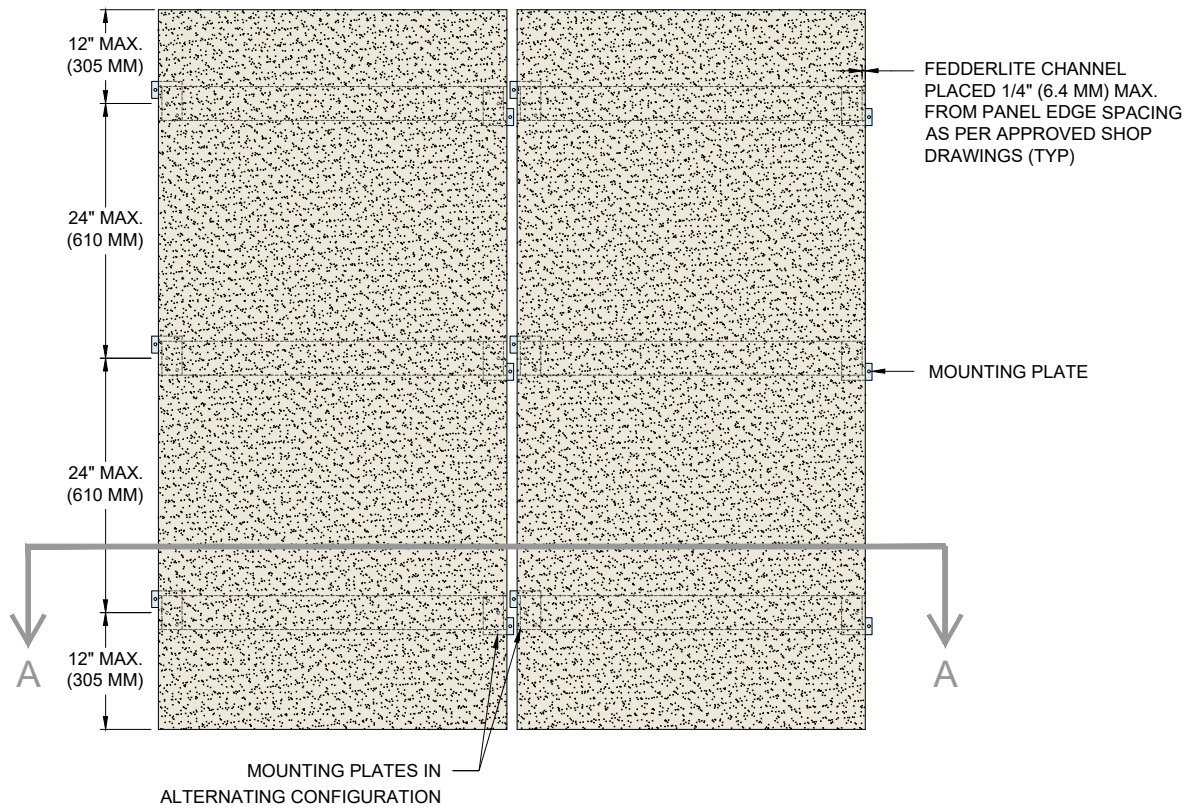
The architecture, engineering, and design of the project using the Dryvit and Tremco products are the responsibility of the project's design professional. All products and systems must comply with local building codes and standards. This detail is for general information and guidance only and Dryvit and Tremco specifically disclaims any liability for the use of this detail. The project design professional determines, in its sole discretion, whether this detail or a functionally equivalent detail is best suited for the project. This detail is subject to change without notice. Contact Dryvit or Tremco to ensure you have the most recent version.

**Fedderlite® Panel System**

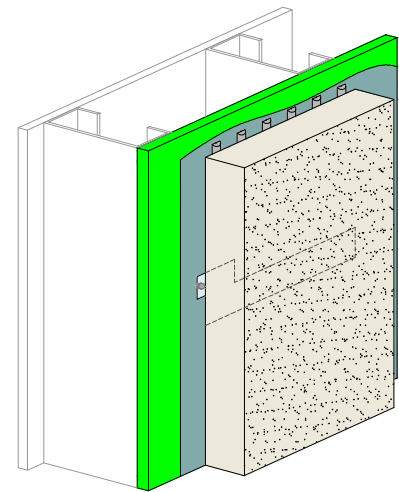
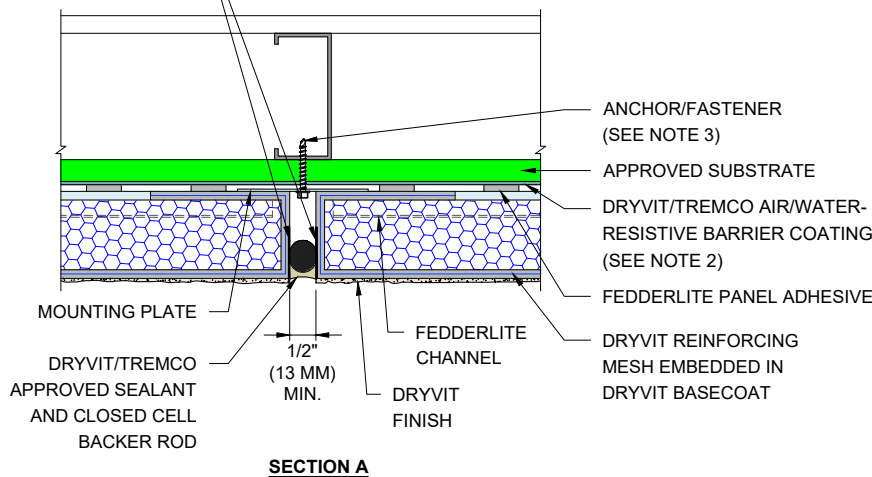


Detail: Back View - Staggered Channel Option				File Name:	
Drawn by: HDE	Checked by: RB CW	Scale: NTS	Date: 9/28/2023	FL 05	
<a href="http://www.tremcocpg.com">www.tremcocpg.com</a>					





DRYVIT DEMANDIT<sup>®</sup> SMOOTH OR COLOR PRIME<sup>™</sup> ON SURFACES TO RECEIVE SEALANT



NOTES:

1. DRYVIT RECOMMENDS THAT GROUND FLOOR APPLICATIONS AND ALL FACADES EXPOSED TO ABNORMAL STRESS, HIGH TRAFFIC, OR DELIBERATE IMPACT HAVE THE BASE COAT REINFORCED WITH PANZER<sup>®</sup> MESH PRIOR TO STANDARD OR STANDARD PLUS MESH. LOCATION OF HIGH IMPACT ZONES SHOULD BE INDICATED ON CONTRACT DRAWINGS.
2. REFER TO DRYVIT PUBLICATION DS840 FOR AWRB AND FLASHING APPLICATION
3. MECHANICAL ATTACHMENTS ARE NECESSARY TO SUPPORT THE PANEL UNTIL THE ADHESIVE CURES. REFER TO DRYVIT PUBLICATION DS217.

*The architecture, engineering, and design of the project using the Dryvit and Tremco products are the responsibility of the project's design professional. All products and systems must comply with local building codes and standards. This detail is for general information and guidance only and Dryvit and Tremco specifically disclaims any liability for the use of this detail. The project design professional determines, in its sole discretion, whether this detail or a functionally equivalent detail is best suited for the project. This detail is subject to change without notice. Contact Dryvit or Tremco to ensure you have the most recent version.*

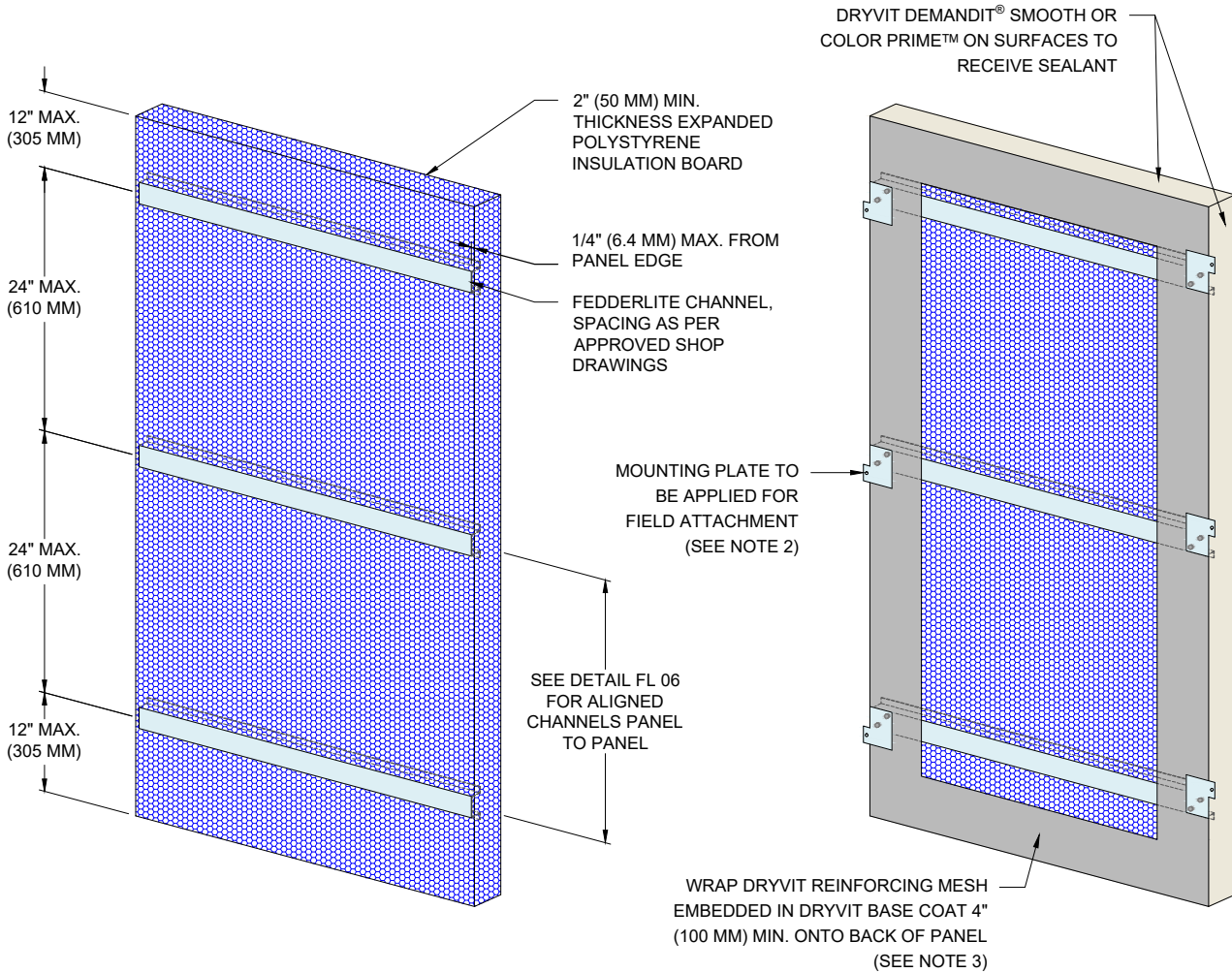
Fedderlite<sup>®</sup> Panel System



Detail: Panel Vertical Joint - Aligned Channel with Mounting Plate Option				File Name:	
Drawn by: HDE	Checked by: RB CW	Scale: NTS	Date: 9/28/2023	FL 06	
<a href="http://www.tremcocpg.com">www.tremcocpg.com</a>					







**BACK VIEW - STEP 1**

**BACK VIEW - STEP 2**

**NOTES:**

1. DRYVIT RECOMMENDS THAT GROUND FLOOR APPLICATIONS AND ALL FACADES EXPOSED TO ABNORMAL STRESS, HIGH TRAFFIC, OR DELIBERATE IMPACT HAVE THE BASE COAT REINFORCED WITH PANZER® MESH PRIOR TO STANDARD OR STANDARD PLUS MESH. LOCATION OF HIGH IMPACT ZONES SHOULD BE INDICATED ON CONTRACT DRAWINGS.
2. ALTERNATE MOUNTING PLATE DIRECTION AT EACH SIDE OF PANEL TO ALLOW FOR ALIGNED CHANNEL INSTALLATION. SEE DETAIL FL 06.
3. WHEN INSTALLATION RESULTS IN A CONTINUOUS AIR SPACE BETWEEN THE PANEL AND THE WALL GREATER THAN 1/8" (3MM), THE ENTIRE PANEL NEEDS TO BE ENCAPSULATED WITH THE REINFORCED BASE COAT.

*The architecture, engineering, and design of the project using the Dryvit and Tremco products are the responsibility of the project's design professional. All products and systems must comply with local building codes and standards. This detail is for general information and guidance only and Dryvit and Tremco specifically disclaims any liability for the use of this detail. The project design professional determines, in its sole discretion, whether this detail or a functionally equivalent detail is best suited for the project. This detail is subject to change without notice. Contact Dryvit or Tremco to ensure you have the most recent version.*

**Fedderlite® Panel System**



Detail: Back View - Aligned Channel with Mounting Plate Option

File Name:

Drawn by: HDE

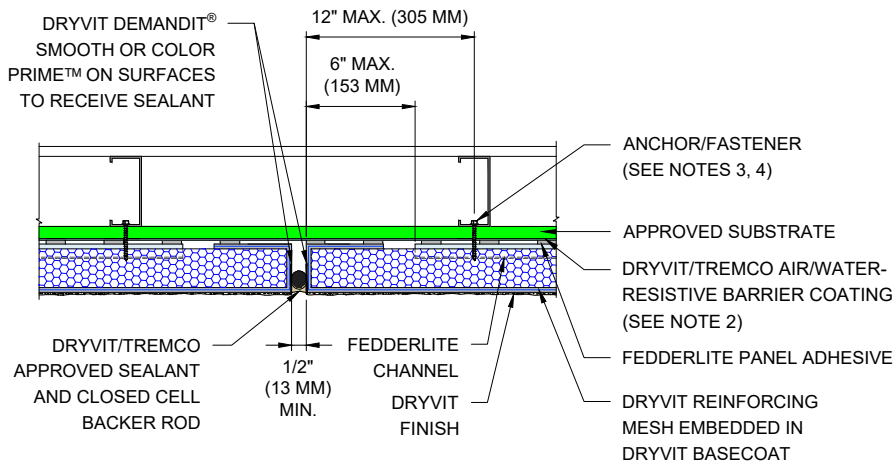
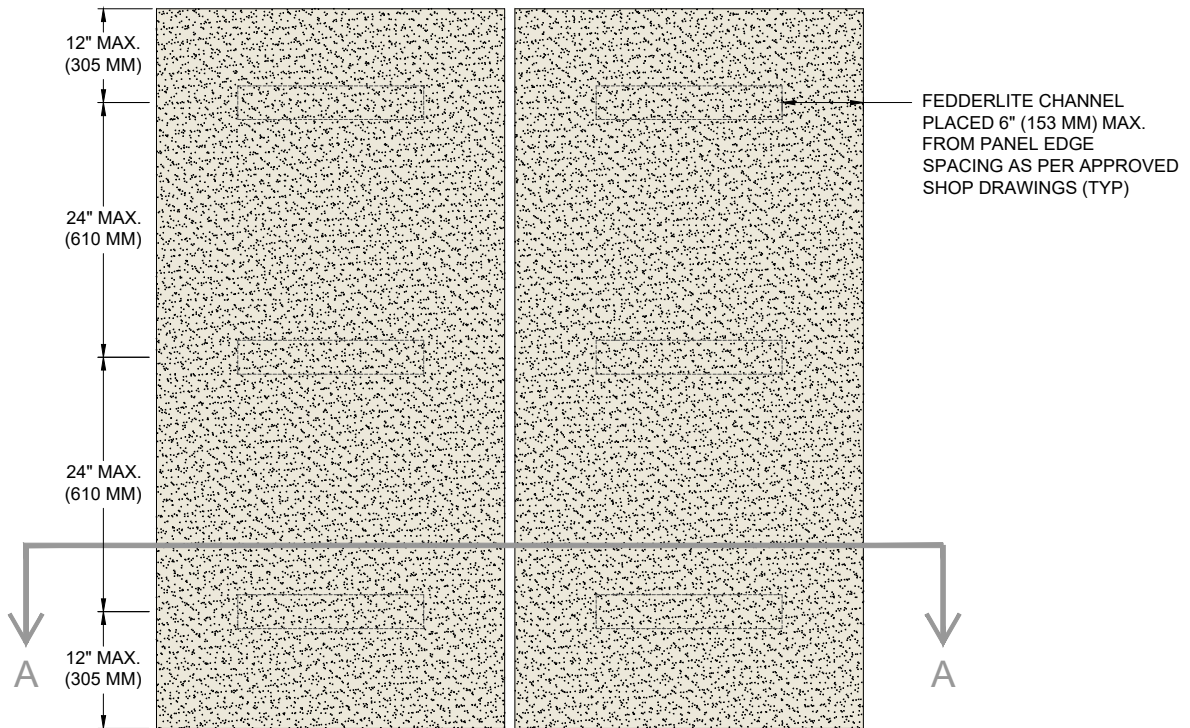
Checked by: RB  
CW

Scale: NTS

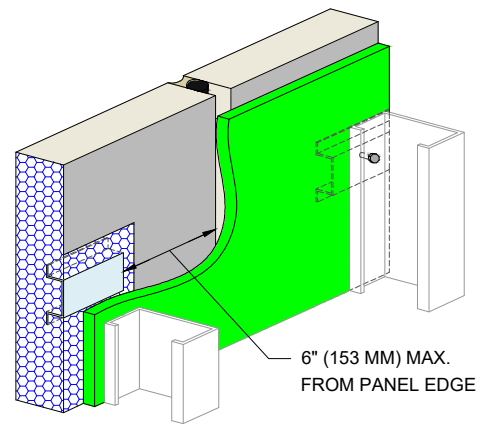
Date: 9/28/2023

FL 07





**SECTION A**



**BACK VIEW**

**NOTES:**

1. DRYVIT RECOMMENDS THAT GROUND FLOOR APPLICATIONS AND ALL FACADES EXPOSED TO ABNORMAL STRESS, HIGH TRAFFIC, OR DELIBERATE IMPACT HAVE THE BASE COAT REINFORCED WITH PANZER® MESH PRIOR TO STANDARD OR STANDARD PLUS MESH. LOCATION OF HIGH IMPACT ZONES SHOULD BE INDICATED ON CONTRACT DRAWINGS.
2. REFER TO DRYVIT PUBLICATION DS840 FOR AWRB AND FLASHING APPLICATION
3. MECHANICAL ATTACHMENTS ARE NECESSARY TO SUPPORT THE PANEL UNTIL THE ADHESIVE CURES. REFER TO DRYVIT PUBLICATION DS217.
4. BACK FASTEN THROUGH STUD FLANGE INTO FEDDERLITE CHANNEL AS NOTED IN APPROVED STRUCTURAL DRAWINGS.

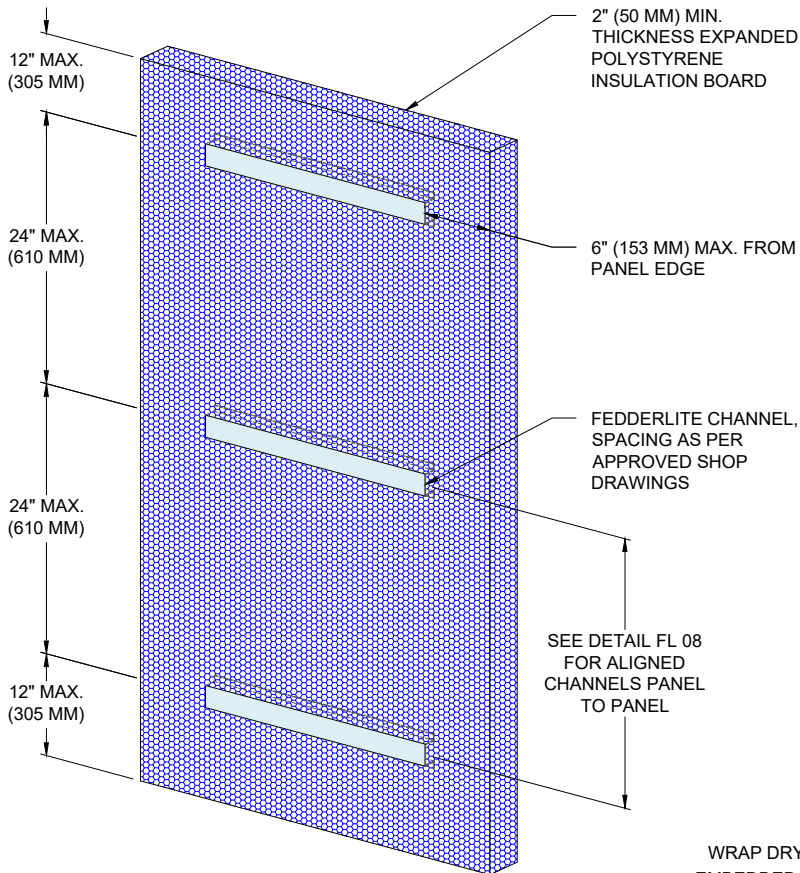
*The architecture, engineering, and design of the project using the Dryvit and Tremco products are the responsibility of the project's design professional. All products and systems must comply with local building codes and standards. This detail is for general information and guidance only and Dryvit and Tremco specifically disclaims any liability for the use of this detail. The project design professional determines, in its sole discretion, whether this detail or a functionally equivalent detail is best suited for the project. This detail is subject to change without notice. Contact Dryvit or Tremco to ensure you have the most recent version.*

**Fedderlite® Panel System**

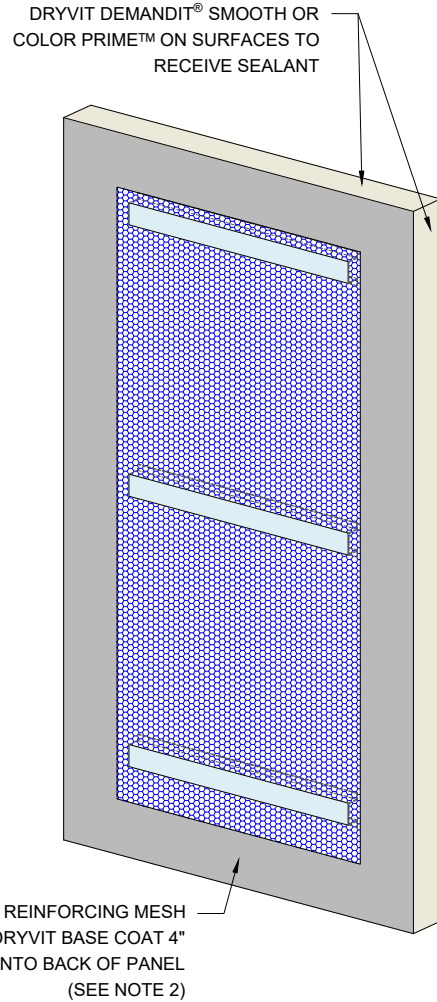


Detail: Panel Vertical Joint - Back Fastened Method				File Name:	
Drawn by: HDE	Checked by: RB CW	Scale: NTS	Date: 9/28/2023	FL 08	
<a href="http://www.tremcocpg.com">www.tremcocpg.com</a>					





**BACK VIEW - STEP 1**



**BACK VIEW - STEP 2**

**NOTES:**

1. DRYVIT RECOMMENDS THAT GROUND FLOOR APPLICATIONS AND ALL FACADES EXPOSED TO ABNORMAL STRESS, HIGH TRAFFIC, OR DELIBERATE IMPACT HAVE THE BASE COAT REINFORCED WITH PANZER® MESH PRIOR TO STANDARD OR STANDARD PLUS MESH. LOCATION OF HIGH IMPACT ZONES SHOULD BE INDICATED ON CONTRACT DRAWINGS.
2. WHEN INSTALLATION RESULTS IN A CONTINUOUS AIR SPACE BETWEEN THE PANEL AND THE WALL GREATER THAN 1/8" (3MM), THE ENTIRE PANEL NEEDS TO BE ENCAPSULATED WITH THE REINFORCED BASE COAT.

*The architecture, engineering, and design of the project using the Dryvit and Tremco products are the responsibility of the project's design professional. All products and systems must comply with local building codes and standards. This detail is for general information and guidance only and Dryvit and Tremco specifically disclaims any liability for the use of this detail. The project design professional determines, in its sole discretion, whether this detail or a functionally equivalent detail is best suited for the project. This detail is subject to change without notice. Contact Dryvit or Tremco to ensure you have the most recent version.*

**Fedderlite® Panel System**



Detail: Back View - Back Fastened Option

Drawn by: HDE

Checked by: RB  
CW

Scale: NTS

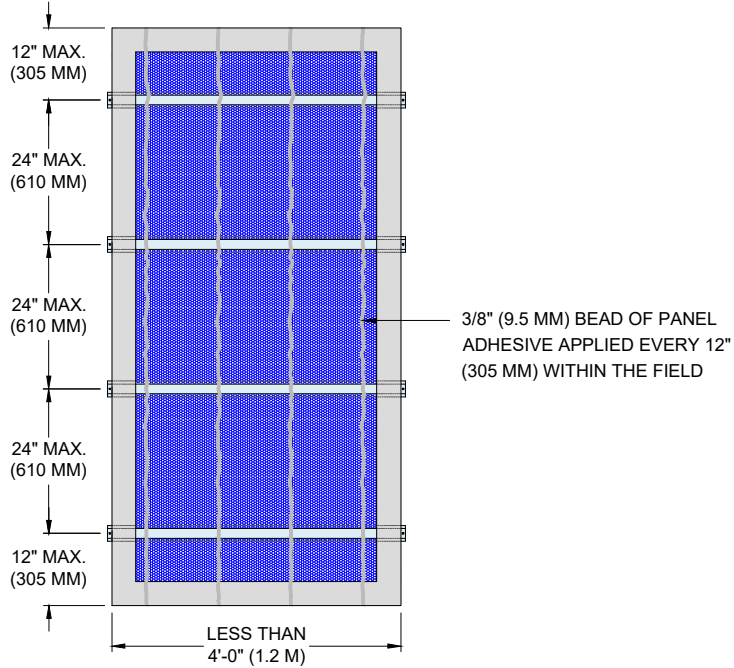
Date: 9/28/2023

File Name:

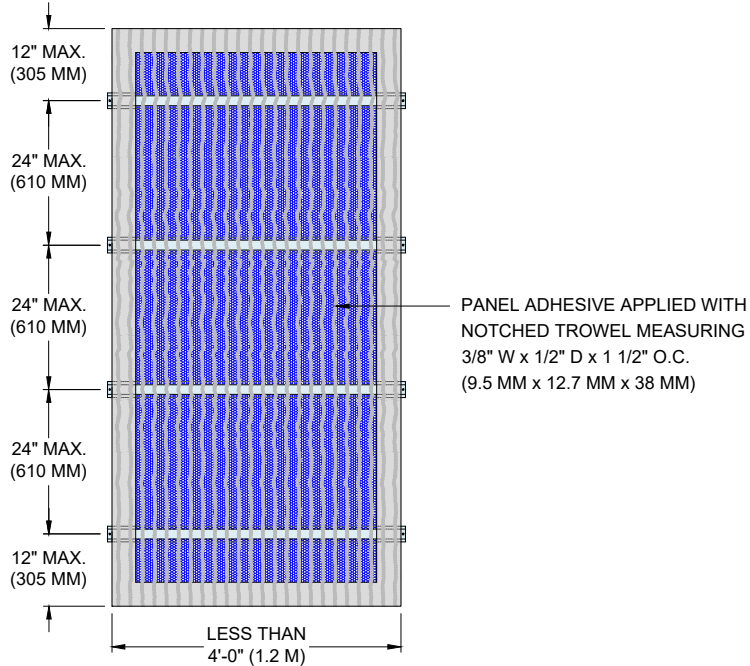
FL 09



**TYPICAL ADHESIVE  
PATTERN WHEN USING  
DRYVIT AP ADHESIVE™  
(SEE NOTE 4) OR  
TREMGRIP®**



**TYPICAL ADHESIVE  
PATTERN WHEN USING  
DRYVIT PRIMUS® OR  
GENESIS ADHESIVE®**



**NOTES:**

1. DRYVIT RECOMMENDS THAT GROUND FLOOR APPLICATIONS AND ALL FACADES EXPOSED TO ABNORMAL STRESS, HIGH TRAFFIC, OR DELIBERATE IMPACT HAVE THE BASE COAT REINFORCED WITH PANZER® MESH PRIOR TO STANDARD OR STANDARD PLUS MESH. LOCATION OF HIGH IMPACT ZONES SHOULD BE INDICATED ON CONTRACT DRAWINGS.
2. REFER TO DRYVIT PUBLICATION DS840 FOR AWRB AND FLASHING APPLICATION.
3. MECHANICAL ATTACHMENTS ARE NECESSARY TO SUPPORT THE PANEL UNTIL THE ADHESIVE CURES. REFER TO DRYVIT PUBLICATION DS217.
4. FOR APPROVED SUBSTRATES FOR DRYVIT AP ADHESIVE REFER TO DRYVIT DATA SHEET DS454.

*The architecture, engineering, and design of the project using the Dryvit and Tremco products are the responsibility of the project's design professional. All products and systems must comply with local building codes and standards. This detail is for general information and guidance only and Dryvit and Tremco specifically disclaims any liability for the use of this detail. The project design professional determines, in its sole discretion, whether this detail or a functionally equivalent detail is best suited for the project. This detail is subject to change without notice. Contact Dryvit or Tremco to ensure you have the most recent version.*

**Fedderlite® Panel System**



Dryvit Technical Support: 800-556-7752

Detail: Adhesive Attachment Methods for Panels Less than 4'-0" Wide<sup>3</sup>

Drawn by: HDE

Checked by: RB  
CW

Scale: NTS

Date: 9/28/2023

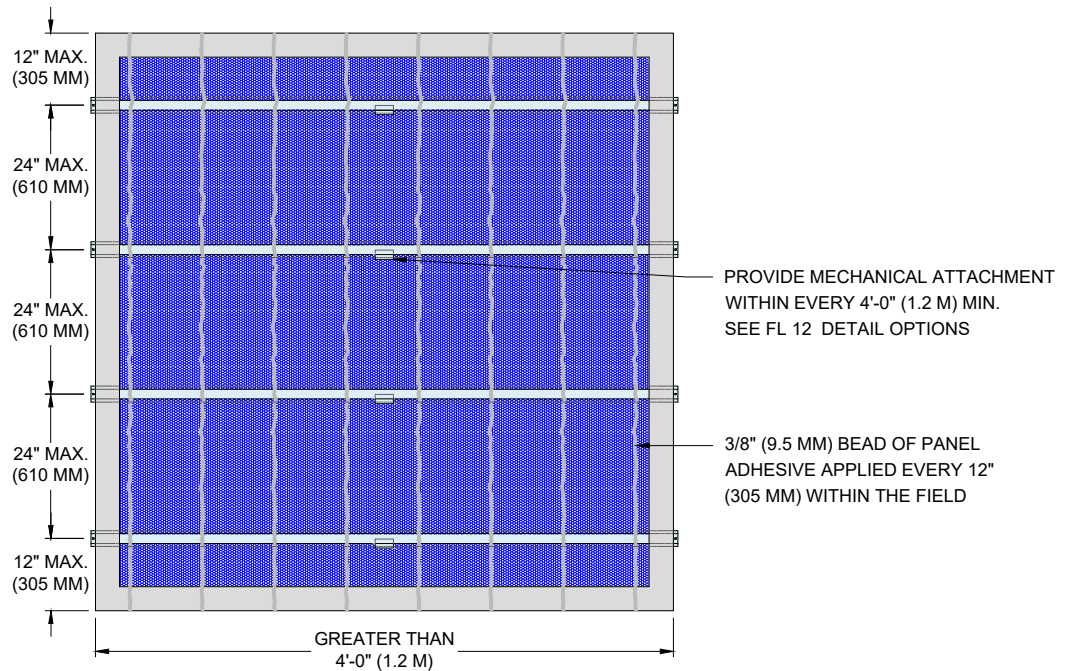
File Name:

FL 10

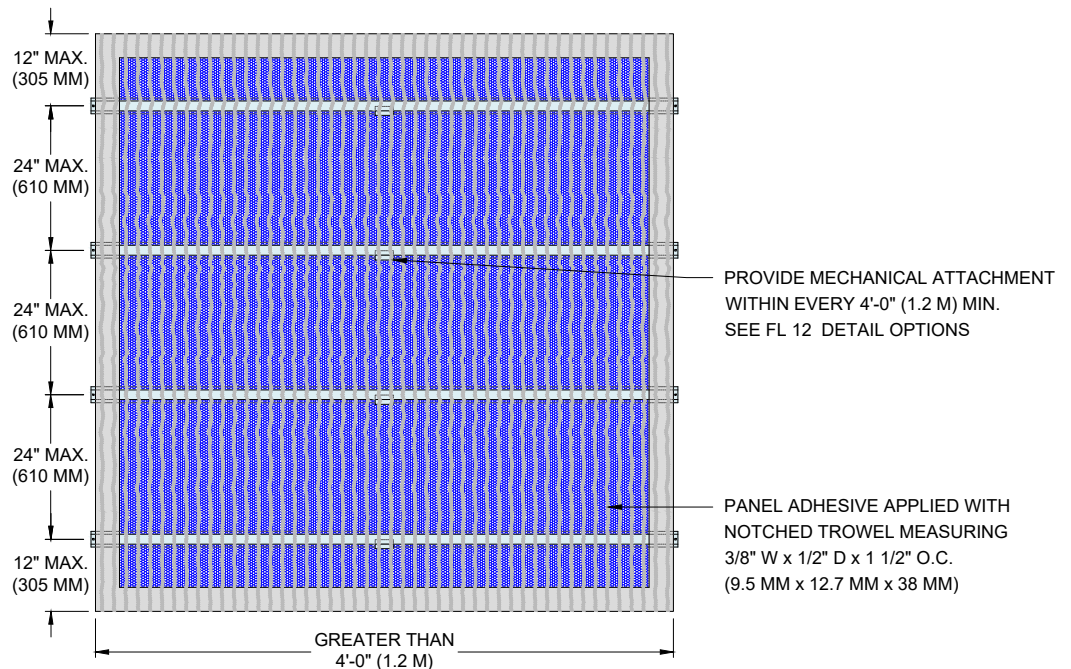
www.tremcocpg.com



**TYPICAL ADHESIVE PATTERN WHEN USING DRYVIT AP ADHESIVE™ (SEE NOTE 5) OR TREMGRIP®**



**TYPICAL ADHESIVE PATTERN WHEN USING DRYVIT PRIMUS® OR GENESIS ADHESIVE®**



**NOTES:**

1. DRYVIT RECOMMENDS THAT GROUND FLOOR APPLICATIONS AND ALL FACADES EXPOSED TO ABNORMAL STRESS, HIGH TRAFFIC, OR DELIBERATE IMPACT HAVE THE BASE COAT REINFORCED WITH PANZER® MESH PRIOR TO STANDARD OR STANDARD PLUS MESH. LOCATION OF HIGH IMPACT ZONES SHOULD BE INDICATED ON CONTRACT DRAWINGS.
2. REFER TO DRYVIT PUBLICATION DS840 FOR AWRB AND FLASHING APPLICATION.
3. MECHANICAL ATTACHMENTS ARE NECESSARY TO SUPPORT THE PANEL UNTIL THE ADHESIVE CURES. REFER TO DRYVIT PUBLICATION DS217.
4. PANEL WIDTHS IN EXCESS OF 4'-0" REQUIRE MECHANICAL ATTACHMENT WITHIN EVERY 4'-0" (1.2M) TO ENSURE FULL ADHESIVE ENGAGEMENT. FEDDERLITE M CHANNEL WITH MOUNTING RAIL CLIP, BACK FASTENED, OR ANOTHER VERSION OF CLIP AS PER SHOP DRAWINGS MAY BE USED TO ACCOMPLISH THIS.
5. FOR APPROVED SUBSTRATES FOR DRYVIT AP ADHESIVE REFER TO DRYVIT DATA SHEET DS454.

*The architecture, engineering, and design of the project using the Dryvit and Tremco products are the responsibility of the project's design professional. All products and systems must comply with local building codes and standards. This detail is for general information and guidance only and Dryvit and Tremco specifically disclaims any liability for the use of this detail. The project design professional determines, in its sole discretion, whether this detail or a functionally equivalent detail is best suited for the project. This detail is subject to change without notice. Contact Dryvit or Tremco to ensure you have the most recent version.*

**Fedderlite® Panel System**



Dryvit Technical Support: 800-556-7752

Detail: Adhesive Attachment Methods for Panels Greater than 4'-0" Wide<sup>3</sup>

Drawn by: HDE

Checked by: RB  
CW

Scale: NTS

Date: 9/28/2023

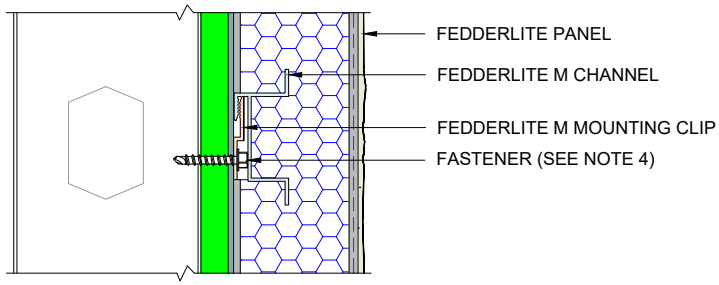
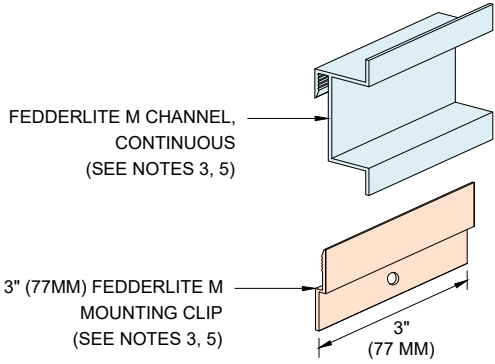
File Name:

FL 11

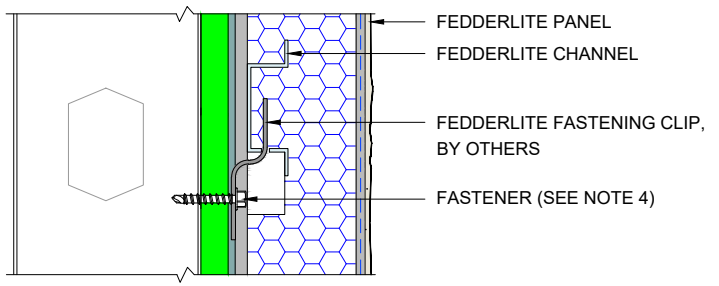
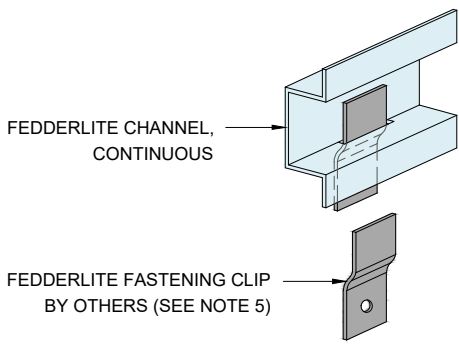


Construction Products Group

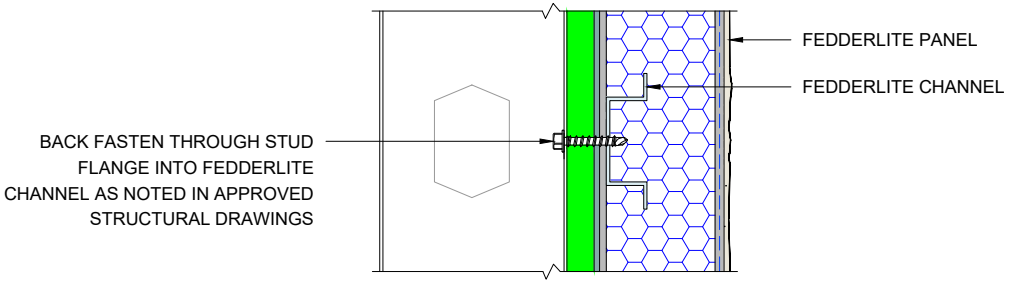
www.tremcocpg.com



**FEDDERLITE M CHANNEL WITH  
FEDDERLITE M MOUNTING CLIP OPTION**



**STANDARD FEDDERLITE CLIP OPTION**



**BACKFASTEN OPTION**

**NOTES:**

1. DRYVIT RECOMMENDS THAT GROUND FLOOR APPLICATIONS AND ALL FACADES EXPOSED TO ABNORMAL STRESS, HIGH TRAFFIC, OR DELIBERATE IMPACT HAVE THE BASE COAT REINFORCED WITH PANZER® MESH PRIOR TO STANDARD OR STANDARD PLUS MESH. LOCATION OF HIGH IMPACT ZONES SHOULD BE INDICATED ON CONTRACT DRAWINGS.
2. REFER TO DRYVIT PUBLICATION DS840 FOR AWRB AND FLASHING APPLICATION.
3. REFER TO PUBLICATION DS949 FOR FEDDERLITE M COMPONENT DIMENSIONS NOT SHOWN ABOVE.
4. MECHANICAL ATTACHMENTS ARE NECESSARY TO SUPPORT THE PANEL UNTIL THE ADHESIVE CURES. REFER TO DRYVIT PUBLICATION DS217. DETAILS ABOVE ARE INTENDED FOR FIELD OF PANEL FOR PANELS GREATER THAN 4'-0" (1.2M) WIDTH.
5. WHEN USING THE CLIP BE SURE TO ALLOW FOR 3/4" (19 MM) MIN. CLEARANCE FOR ADEQUATE LIFT TO ENGAGE CLIP.
6. WHEN USED WITHOUT PANEL ADHESIVE CLIPS AND CLIP SPACING MUST BE ENGINEERED BY THE PANEL FABRICATOR FOR THE APPROPRIATE PROJECT DESIGN WIND LOAD.

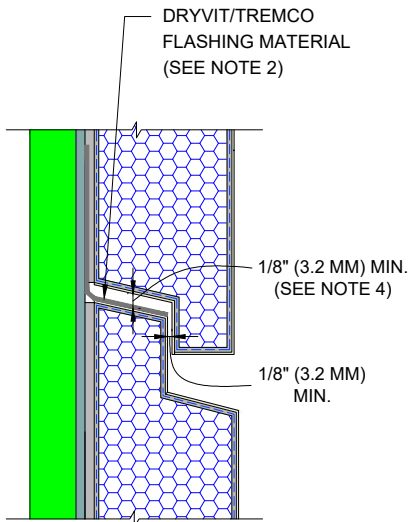
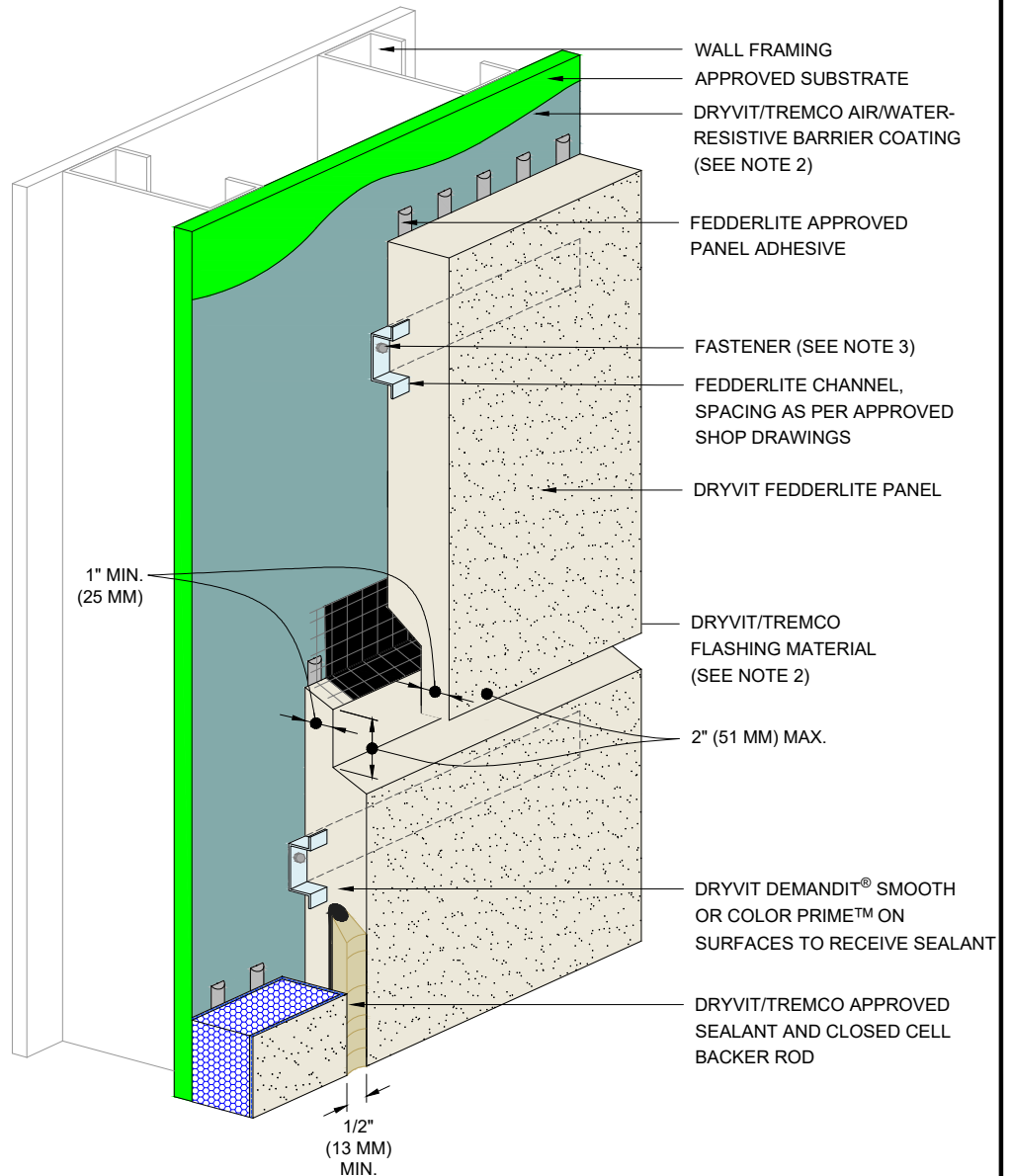
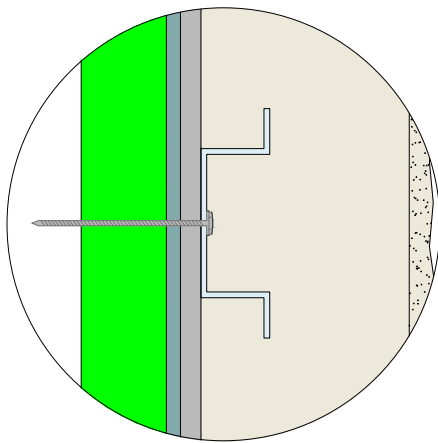
*The architecture, engineering, and design of the project using the Dryvit and Tremco products are the responsibility of the project's design professional. All products and systems must comply with local building codes and standards. This detail is for general information and guidance only and Dryvit and Tremco specifically disclaims any liability for the use of this detail. The project design professional determines, in its sole discretion, whether this detail or a functionally equivalent detail is best suited for the project. This detail is subject to change without notice. Contact Dryvit or Tremco to ensure you have the most recent version.*

**Fedderlite® Panel System**



Detail: Fastening Methods - Field of Panel <sup>4</sup>				File Name:	
Drawn by: HDE	Checked by: RB CW	Scale: NTS	Date: 9/28/2023	FL 12	
<a href="http://www.tremcocpg.com">www.tremcocpg.com</a>					





NOTES:

1. DRYVIT RECOMMENDS THAT GROUND FLOOR APPLICATIONS AND ALL FACADES EXPOSED TO ABNORMAL STRESS, HIGH TRAFFIC, OR DELIBERATE IMPACT HAVE THE BASE COAT REINFORCED WITH PANZER® MESH PRIOR TO STANDARD OR STANDARD PLUS MESH. LOCATION OF HIGH IMPACT ZONES SHOULD BE INDICATED ON CONTRACT DRAWINGS.
2. REFER TO DRYVIT PUBLICATION DS840 FOR AWRB AND FLASHING APPLICATION.
3. MECHANICAL ATTACHMENTS ARE NECESSARY TO SUPPORT THE PANEL UNTIL THE ADHESIVE CURES. REFER TO DRYVIT PUBLICATION DS217.
4. HONOR ALL BUILDING EXPANSION JOINTS AND SIZE ACCORDINGLY AS PER SHOP DRAWINGS.

The architecture, engineering, and design of the project using the Dryvit and Tremco products are the responsibility of the project's design professional. All products and systems must comply with local building codes and standards. This detail is for general information and guidance only and Dryvit and Tremco specifically disclaims any liability for the use of this detail. The project design professional determines, in its sole discretion, whether this detail or a functionally equivalent detail is best suited for the project. This detail is subject to change without notice. Contact Dryvit or Tremco to ensure you have the most recent version.

Fedderlite® Panel System



Dryvit Technical Support: 800-556-7752

Detail: Horizontal Shiplap Joint with Drainage

Drawn by: HDE

Checked by: RB  
CW

Scale: NTS

Date: 9/28/2023

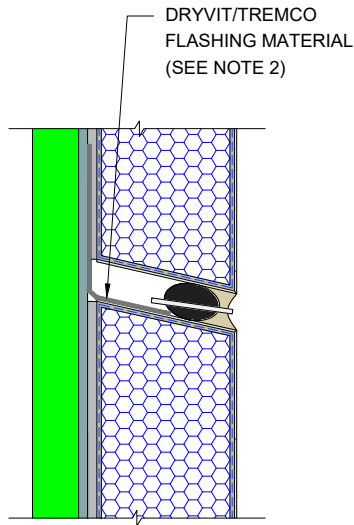
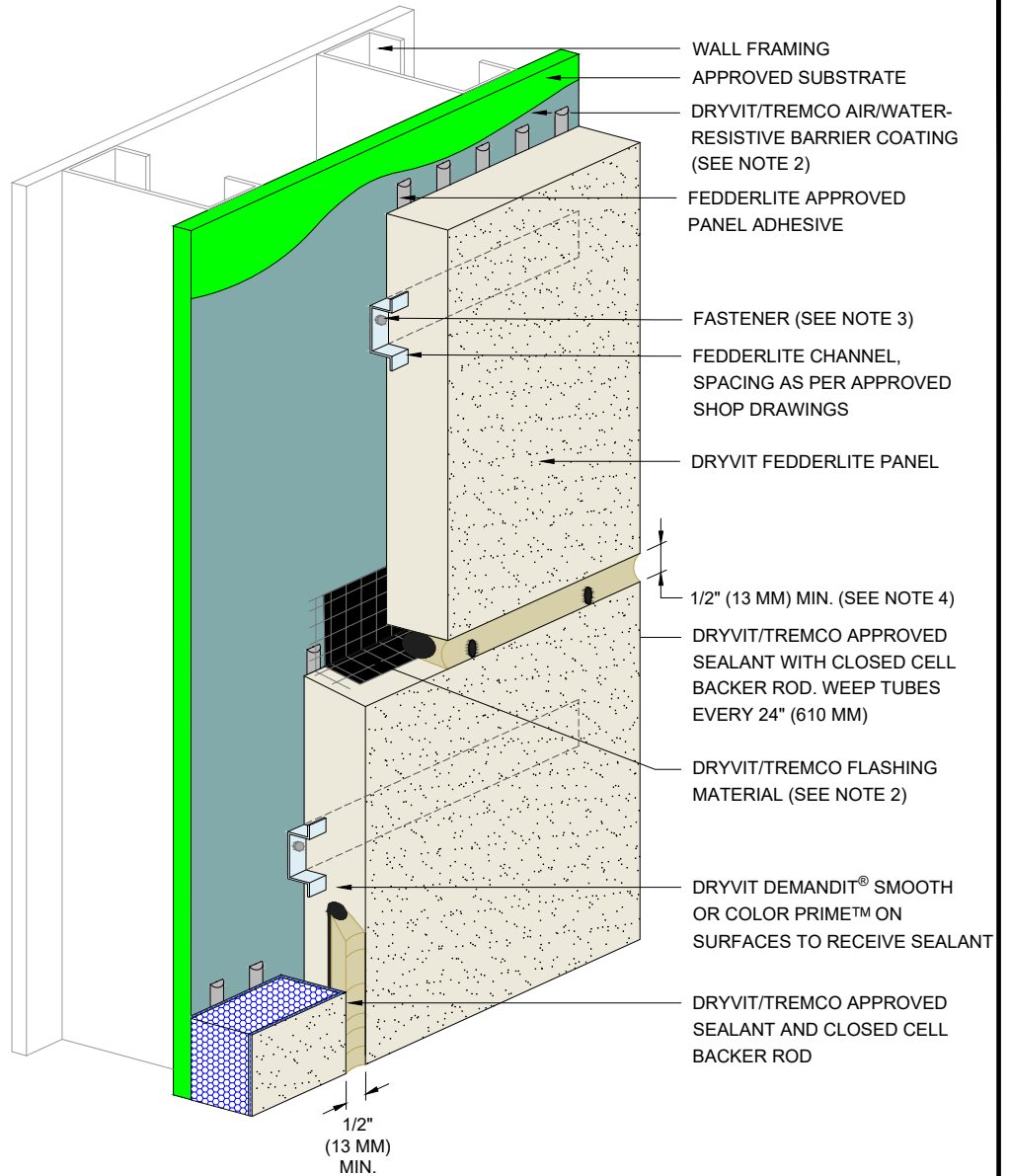
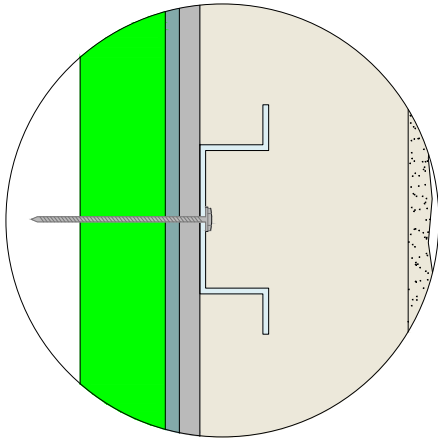
File Name:

FL 13



Construction Products Group

www.tremcocpg.com



NOTES:

1. DRYVIT RECOMMENDS THAT GROUND FLOOR APPLICATIONS AND ALL FACADES EXPOSED TO ABNORMAL STRESS, HIGH TRAFFIC, OR DELIBERATE IMPACT HAVE THE BASE COAT REINFORCED WITH PANZER® MESH PRIOR TO STANDARD OR STANDARD PLUS MESH. LOCATION OF HIGH IMPACT ZONES SHOULD BE INDICATED ON CONTRACT DRAWINGS.
2. REFER TO DRYVIT PUBLICATION DS840 FOR AWRB AND FLASHING APPLICATION.
3. MECHANICAL ATTACHMENTS ARE NECESSARY TO SUPPORT THE PANEL UNTIL THE ADHESIVE CURES. REFER TO DRYVIT PUBLICATION DS217.
4. HONOR ALL BUILDING EXPANSION JOINTS AND SIZE ACCORDINGLY AS PER SHOP DRAWINGS.

The architecture, engineering, and design of the project using the Dryvit and Tremco products are the responsibility of the project's design professional. All products and systems must comply with local building codes and standards. This detail is for general information and guidance only and Dryvit and Tremco specifically disclaims any liability for the use of this detail. The project design professional determines, in its sole discretion, whether this detail or a functionally equivalent detail is best suited for the project. This detail is subject to change without notice. Contact Dryvit or Tremco to ensure you have the most recent version.

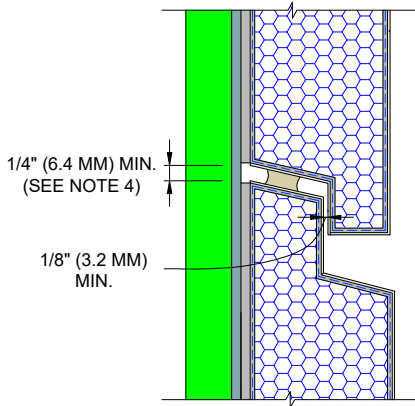
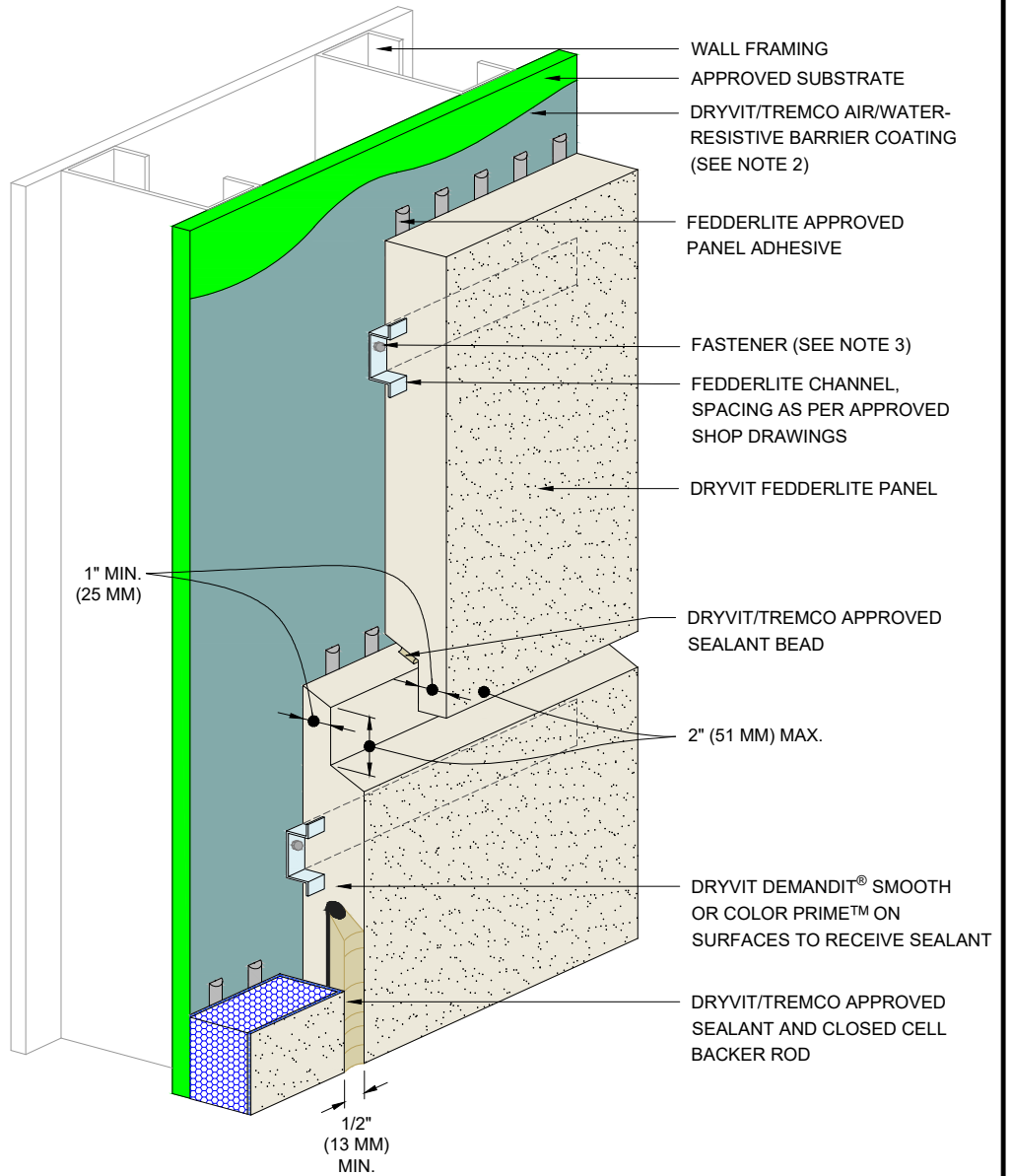
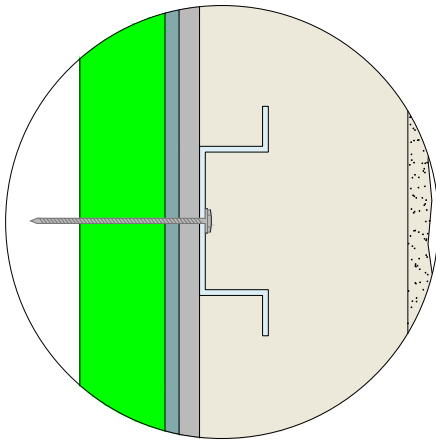
Fedderlite® Panel System



Detail: Horizontal Joint with Drainage				File Name:	
Drawn by: HDE	Checked by: RB CW	Scale: NTS	Date: 9/28/2023	FL 14	
<a href="http://www.tremcocpg.com">www.tremcocpg.com</a>					







NOTES:

1. DRYVIT RECOMMENDS THAT GROUND FLOOR APPLICATIONS AND ALL FACADES EXPOSED TO ABNORMAL STRESS, HIGH TRAFFIC, OR DELIBERATE IMPACT HAVE THE BASE COAT REINFORCED WITH PANZER® MESH PRIOR TO STANDARD OR STANDARD PLUS MESH. LOCATION OF HIGH IMPACT ZONES SHOULD BE INDICATED ON CONTRACT DRAWINGS.
2. REFER TO DRYVIT PUBLICATION DS840 FOR AWRB AND FLASHING APPLICATION.
3. MECHANICAL ATTACHMENTS ARE NECESSARY TO SUPPORT THE PANEL UNTIL THE ADHESIVE CURES. REFER TO DRYVIT PUBLICATION DS217.
4. HONOR ALL BUILDING EXPANSION JOINTS AND SIZE ACCORDINGLY AS PER SHOP DRAWINGS.

The architecture, engineering, and design of the project using the Dryvit and Tremco products are the responsibility of the project's design professional. All products and systems must comply with local building codes and standards. This detail is for general information and guidance only and Dryvit and Tremco specifically disclaims any liability for the use of this detail. The project design professional determines, in its sole discretion, whether this detail or a functionally equivalent detail is best suited for the project. This detail is subject to change without notice. Contact Dryvit or Tremco to ensure you have the most recent version.

Fedderlite® Panel System



Dryvit Technical Support: 800-556-7752

Detail: Horizontal Shiplap Joint

Drawn by: HDE

Checked by: RB  
CW

Scale: NTS

Date: 9/28/2023

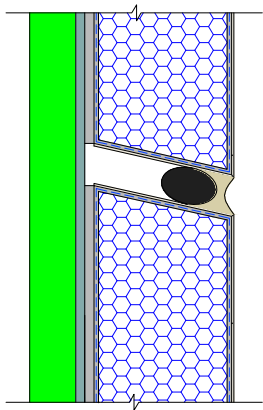
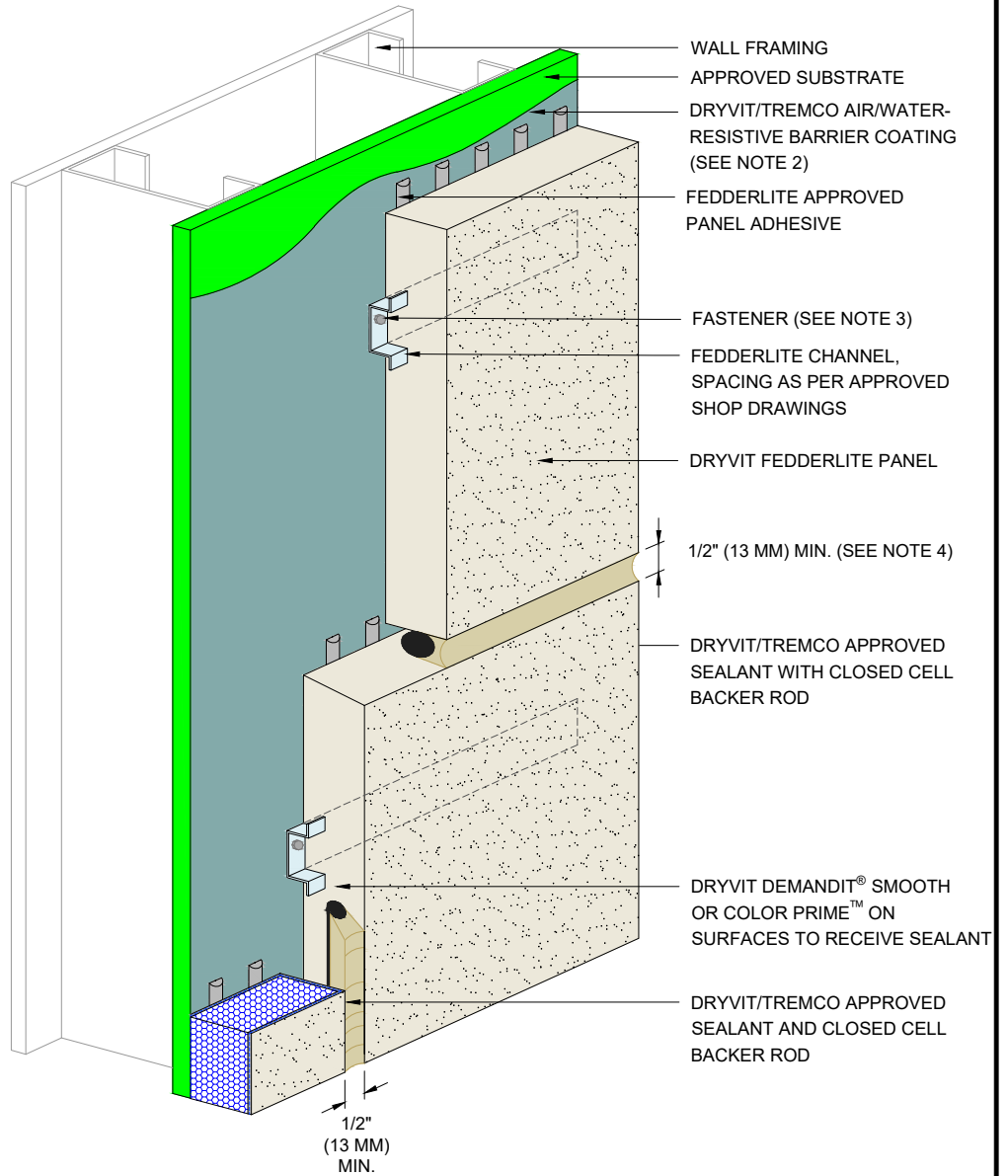
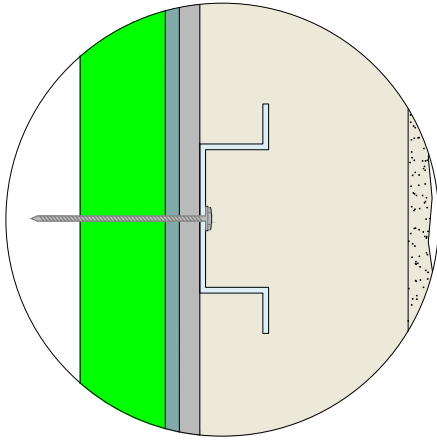
File Name:

FL 15



Construction Products Group

www.tremcocpg.com



NOTES:

1. DRYVIT RECOMMENDS THAT GROUND FLOOR APPLICATIONS AND ALL FACADES EXPOSED TO ABNORMAL STRESS, HIGH TRAFFIC, OR DELIBERATE IMPACT HAVE THE BASE COAT REINFORCED WITH PANZER® MESH PRIOR TO STANDARD OR STANDARD PLUS MESH. LOCATION OF HIGH IMPACT ZONES SHOULD BE INDICATED ON CONTRACT DRAWINGS.
2. REFER TO DRYVIT PUBLICATION DS840 FOR AWRB AND FLASHING APPLICATION.
3. MECHANICAL ATTACHMENTS ARE NECESSARY TO SUPPORT THE PANEL UNTIL THE ADHESIVE CURES. REFER TO DRYVIT PUBLICATION DS217.
4. HONOR ALL BUILDING EXPANSION JOINTS AND SIZE ACCORDINGLY AS PER SHOP DRAWINGS.

The architecture, engineering, and design of the project using the Dryvit and Tremco products are the responsibility of the project's design professional. All products and systems must comply with local building codes and standards. This detail is for general information and guidance only and Dryvit and Tremco specifically disclaims any liability for the use of this detail. The project design professional determines, in its sole discretion, whether this detail or a functionally equivalent detail is best suited for the project. This detail is subject to change without notice. Contact Dryvit or Tremco to ensure you have the most recent version.

Fedderlite® Panel System



Dryvit Technical Support: 800-556-7752

Detail: Horizontal Joint

Drawn by: HDE

Checked by: RB  
CW

Scale: NTS

Date: 9/28/2023

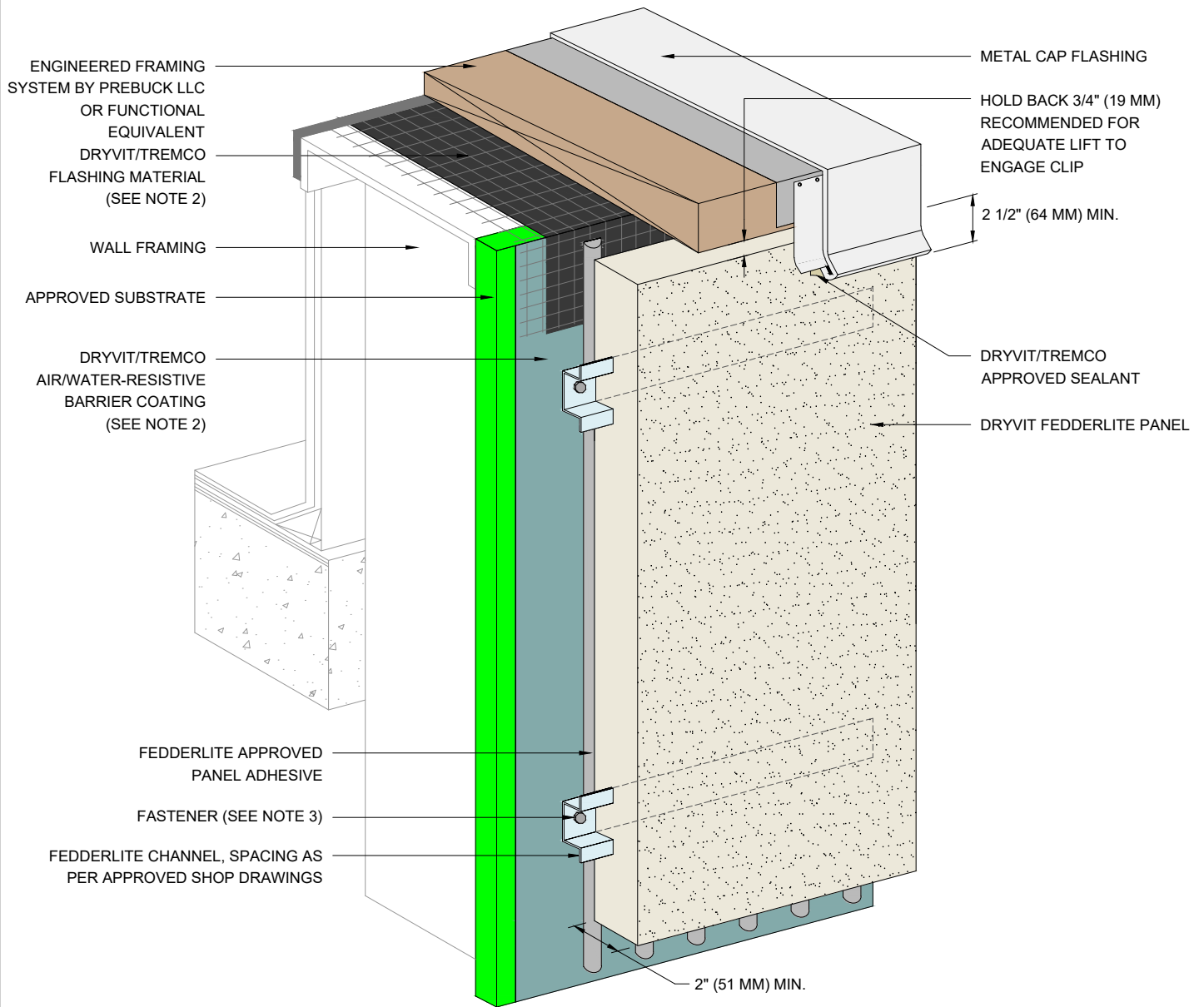
File Name:

FL 16



Construction Products Group

www.tremcocpg.com



NOTES:

1. DRYVIT RECOMMENDS THAT GROUND FLOOR APPLICATIONS AND ALL FACADES EXPOSED TO ABNORMAL STRESS, HIGH TRAFFIC, OR DELIBERATE IMPACT HAVE THE BASE COAT REINFORCED WITH PANZER® MESH PRIOR TO STANDARD OR STANDARD PLUS MESH. LOCATION OF HIGH IMPACT ZONES SHOULD BE INDICATED ON CONTRACT DRAWINGS.
2. REFER TO DRYVIT PUBLICATION DS840 FOR AWRB AND FLASHING APPLICATION.
3. MECHANICAL ATTACHMENTS ARE NECESSARY TO SUPPORT THE PANEL UNTIL THE ADHESIVE CURES. REFER TO DRYVIT PUBLICATION DS217.

The architecture, engineering, and design of the project using the Dryvit and Tremco products are the responsibility of the project's design professional. All products and systems must comply with local building codes and standards. This detail is for general information and guidance only and Dryvit and Tremco specifically disclaims any liability for the use of this detail. The project design professional determines, in its sole discretion, whether this detail or a functionally equivalent detail is best suited for the project. This detail is subject to change without notice. Contact Dryvit or Tremco to ensure you have the most recent version.

Fedderlite® Panel System



Detail: Parapet

Drawn by: HDE

Checked by: RB  
CW

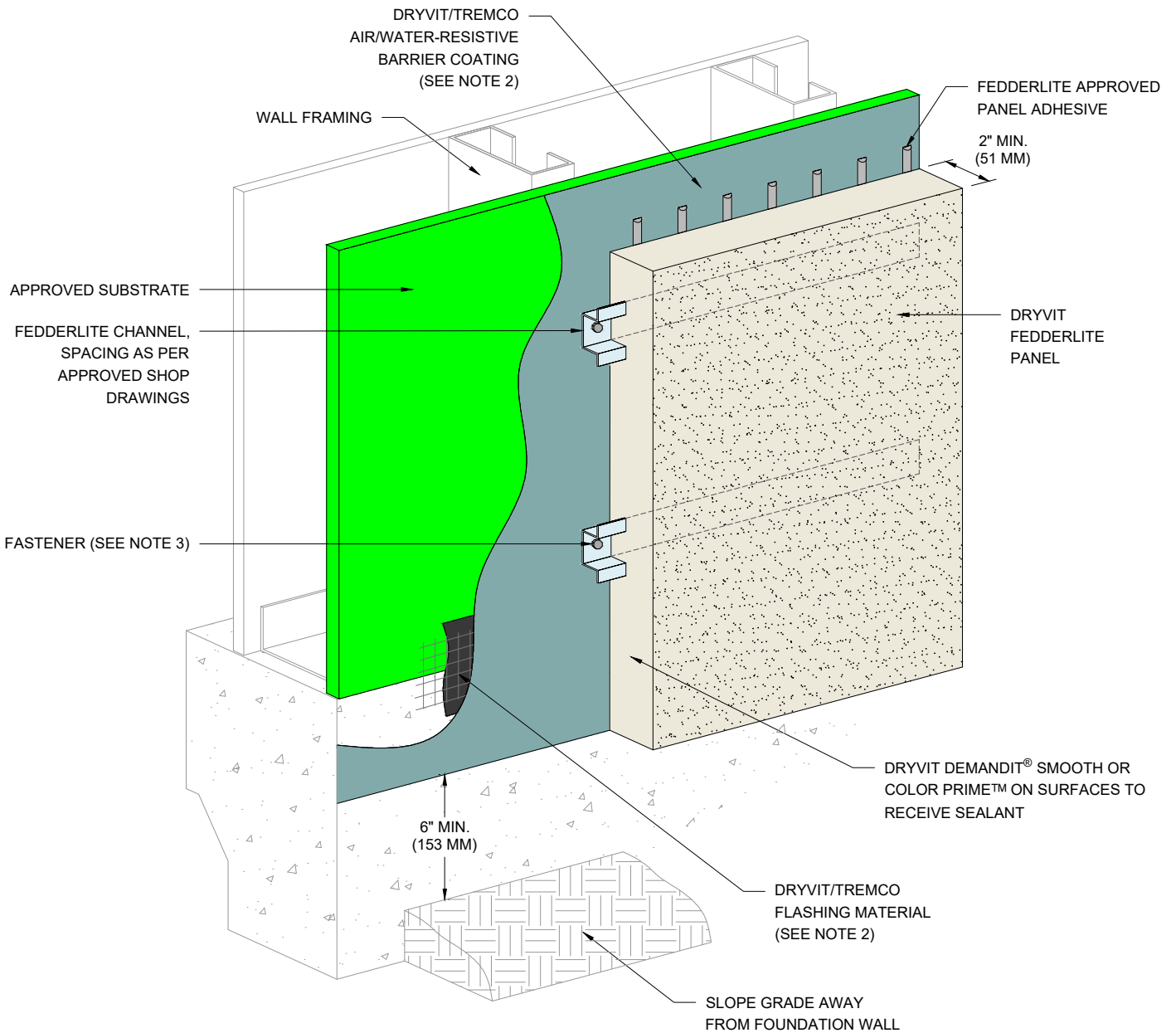
Scale: NTS

Date: 9/28/2023

File Name:

FL 17





NOTES:

1. DRYVIT RECOMMENDS THAT GROUND FLOOR APPLICATIONS AND ALL FACADES EXPOSED TO ABNORMAL STRESS, HIGH TRAFFIC, OR DELIBERATE IMPACT HAVE THE BASE COAT REINFORCED WITH PANZER® MESH PRIOR TO STANDARD OR STANDARD PLUS MESH. LOCATION OF HIGH IMPACT ZONES SHOULD BE INDICATED ON CONTRACT DRAWINGS.
2. REFER TO DRYVIT PUBLICATION DS840 FOR AWRB AND FLASHING APPLICATION.
3. MECHANICAL ATTACHMENTS ARE NECESSARY TO SUPPORT THE PANEL UNTIL THE ADHESIVE CURES. REFER TO DRYVIT PUBLICATION DS217.

The architecture, engineering, and design of the project using the Dryvit and Tremco products are the responsibility of the project's design professional. All products and systems must comply with local building codes and standards. This detail is for general information and guidance only and Dryvit and Tremco specifically disclaims any liability for the use of this detail. The project design professional determines, in its sole discretion, whether this detail or a functionally equivalent detail is best suited for the project. This detail is subject to change without notice. Contact Dryvit or Tremco to ensure you have the most recent version.

Fedderlite® Panel System



Dryvit Technical Support: 800-556-7752

Detail: Foundation at Grade - Flush Substrate

Drawn by: HDE

Checked by: RB  
CW

Scale: NTS

Date: 9/28/2023

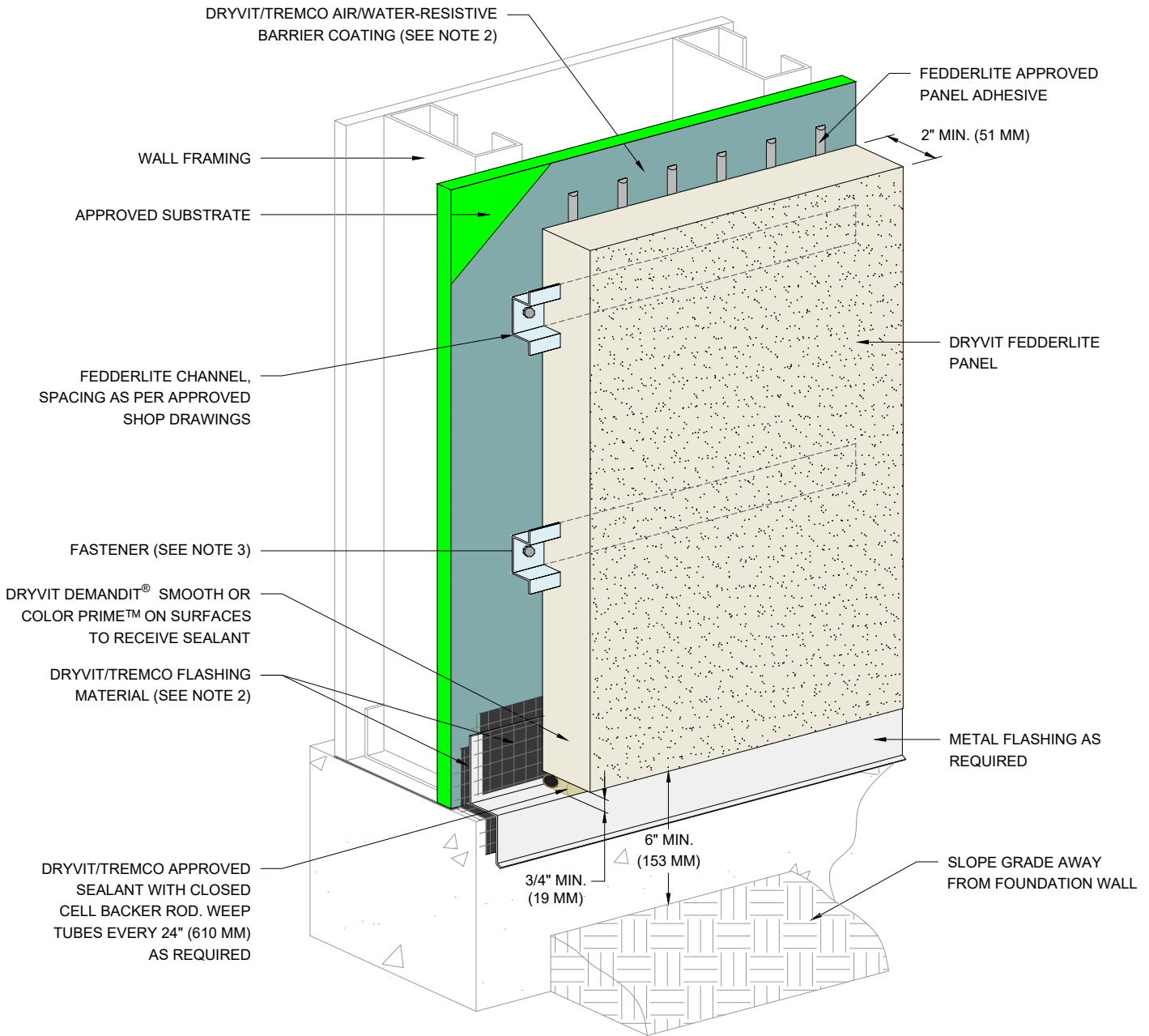
File Name:

FL 18



Construction Products Group

www.tremcocpg.com



NOTES:

1. DRYVIT RECOMMENDS THAT GROUND FLOOR APPLICATIONS AND ALL FACADES EXPOSED TO ABNORMAL STRESS, HIGH TRAFFIC, OR DELIBERATE IMPACT HAVE THE BASE COAT REINFORCED WITH PANZER® MESH PRIOR TO STANDARD OR STANDARD PLUS MESH. LOCATION OF HIGH IMPACT ZONES SHOULD BE INDICATED ON CONTRACT DRAWINGS.
2. REFER TO DRYVIT PUBLICATION DS840 FOR AWRB AND FLASHING APPLICATION.
3. MECHANICAL ATTACHMENTS ARE NECESSARY TO SUPPORT THE PANEL UNTIL THE ADHESIVE CURES. REFER TO DRYVIT PUBLICATION DS217.

The architecture, engineering, and design of the project using the Dryvit and Tremco products are the responsibility of the project's design professional. All products and systems must comply with local building codes and standards. This detail is for general information and guidance only and Dryvit and Tremco specifically disclaims any liability for the use of this detail. The project design professional determines, in its sole discretion, whether this detail or a functionally equivalent detail is best suited for the project. This detail is subject to change without notice. Contact Dryvit or Tremco to ensure you have the most recent version.

Fedderlite® Panel System



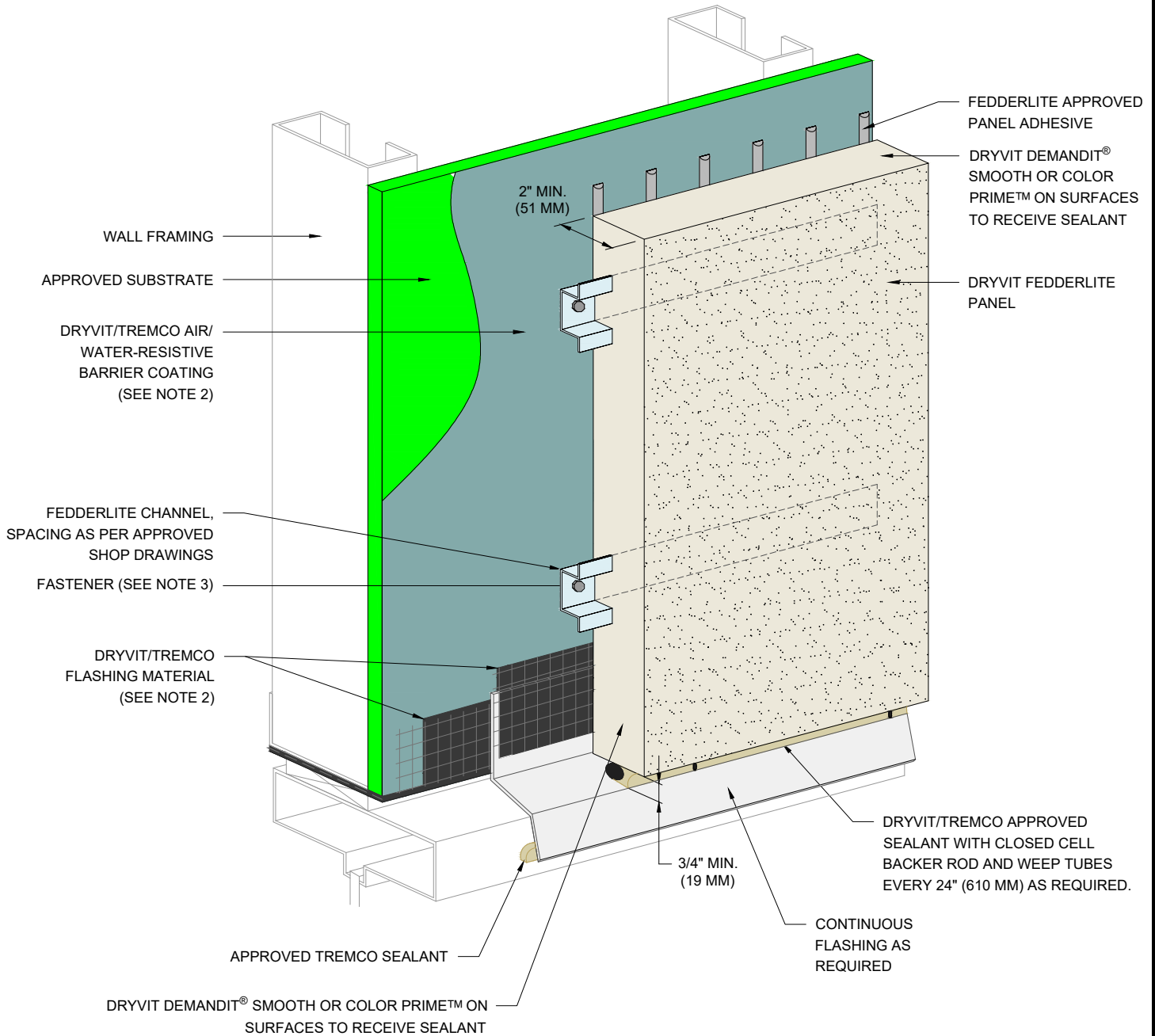
Dryvit Technical Support: 800-556-7752

Detail: Foundation at Grade - Recessed Substrate				File Name:	
Drawn by: HDE	Checked by: RB CW	Scale: NTS	Date: 9/28/2023	FL 19	

www.tremcocpg.com



Construction Products Group



**NOTES:**

1. DRYVIT RECOMMENDS THAT GROUND FLOOR APPLICATIONS AND ALL FACADES EXPOSED TO ABNORMAL STRESS, HIGH TRAFFIC, OR DELIBERATE IMPACT HAVE THE BASE COAT REINFORCED WITH PANZER® MESH PRIOR TO STANDARD OR STANDARD PLUS MESH. LOCATION OF HIGH IMPACT ZONES SHOULD BE INDICATED ON CONTRACT DRAWINGS.
2. REFER TO DRYVIT PUBLICATION DS840 FOR AWRB AND FLASHING APPLICATION.
3. MECHANICAL ATTACHMENTS ARE NECESSARY TO SUPPORT THE PANEL UNTIL THE ADHESIVE CURES. REFER TO DRYVIT PUBLICATION DS217.

*The architecture, engineering, and design of the project using the Dryvit and Tremco products are the responsibility of the project's design professional. All products and systems must comply with local building codes and standards. This detail is for general information and guidance only and Dryvit and Tremco specifically disclaims any liability for the use of this detail. The project design professional determines, in its sole discretion, whether this detail or a functionally equivalent detail is best suited for the project. This detail is subject to change without notice. Contact Dryvit or Tremco to ensure you have the most recent version.*

**Fedderlite® Panel System**



Dryvit Technical Support: 800-556-7752

Detail: Head

Drawn by: HDE

Checked by: RB  
CW

Scale: NTS

Date: 9/28/2023

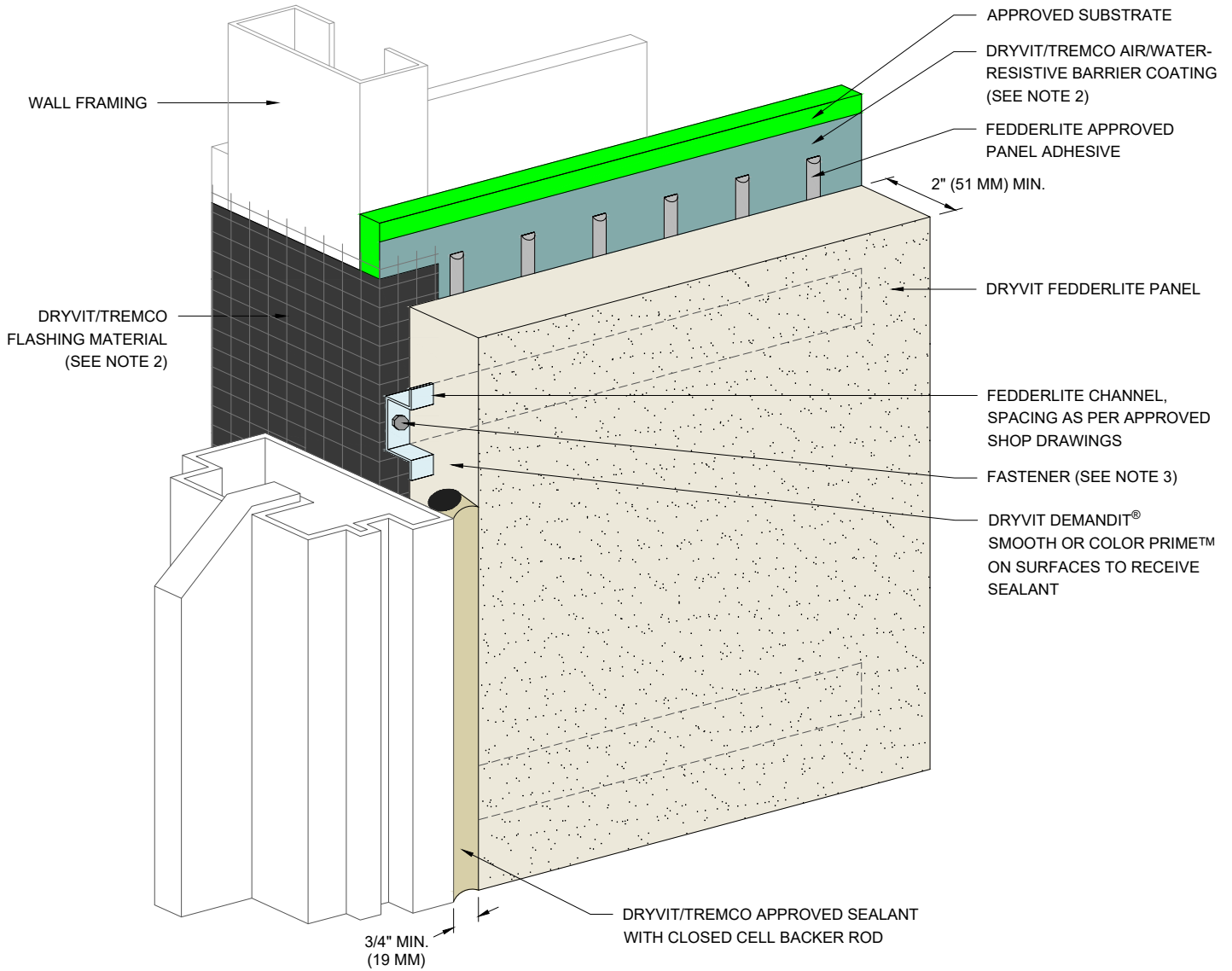
File Name:

FL 20



Construction Products Group

www.tremcocpg.com



NOTES:

1. DRYVIT RECOMMENDS THAT GROUND FLOOR APPLICATIONS AND ALL FACADES EXPOSED TO ABNORMAL STRESS, HIGH TRAFFIC, OR DELIBERATE IMPACT HAVE THE BASE COAT REINFORCED WITH PANZER® MESH PRIOR TO STANDARD OR STANDARD PLUS MESH. LOCATION OF HIGH IMPACT ZONES SHOULD BE INDICATED ON CONTRACT DRAWINGS.
2. REFER TO DRYVIT PUBLICATION DS840 FOR AWRB AND FLASHING APPLICATION.
3. MECHANICAL ATTACHMENTS ARE NECESSARY TO SUPPORT THE PANEL UNTIL THE ADHESIVE CURES. REFER TO DRYVIT PUBLICATION DS217.

*The architecture, engineering, and design of the project using the Dryvit and Tremco products are the responsibility of the project's design professional. All products and systems must comply with local building codes and standards. This detail is for general information and guidance only and Dryvit and Tremco specifically disclaims any liability for the use of this detail. The project design professional determines, in its sole discretion, whether this detail or a functionally equivalent detail is best suited for the project. This detail is subject to change without notice. Contact Dryvit or Tremco to ensure you have the most recent version.*

Fedderlite® Panel System



Dryvit Technical Support: 800-556-7752

Detail: Jamb

Drawn by: HDE

Checked by: RB  
CW

Scale: NTS

Date: 9/28/2023

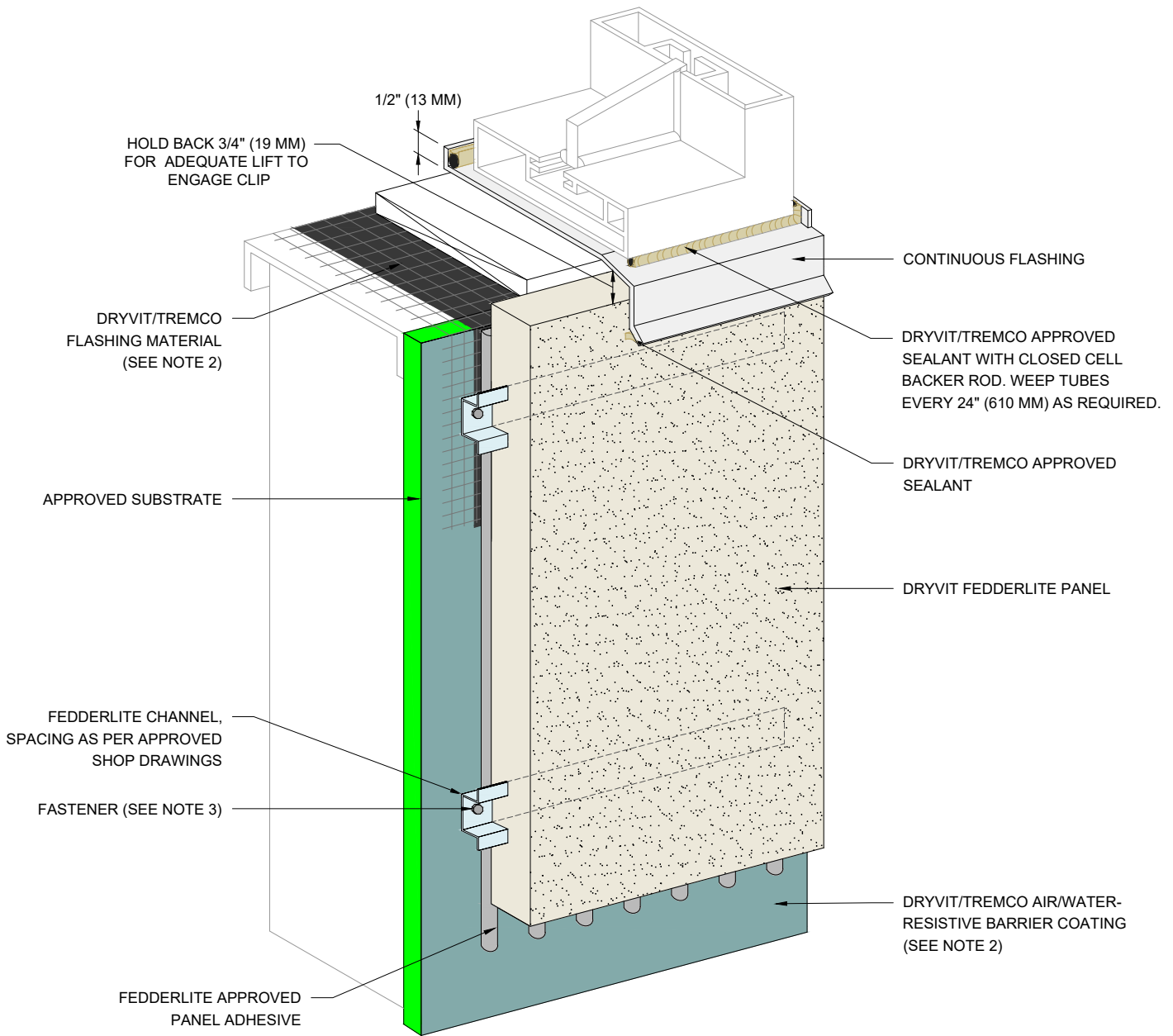
File Name:

FL 21



Construction Products Group

www.tremcocpg.com



**NOTES:**

1. DRYVIT RECOMMENDS THAT GROUND FLOOR APPLICATIONS AND ALL FACADES EXPOSED TO ABNORMAL STRESS, HIGH TRAFFIC, OR DELIBERATE IMPACT HAVE THE BASE COAT REINFORCED WITH PANZER® MESH PRIOR TO STANDARD OR STANDARD PLUS MESH. LOCATION OF HIGH IMPACT ZONES SHOULD BE INDICATED ON CONTRACT DRAWINGS.
2. REFER TO DRYVIT PUBLICATION DS840 FOR AWRB AND FLASHING APPLICATION.
3. MECHANICAL ATTACHMENTS ARE NECESSARY TO SUPPORT THE PANEL UNTIL THE ADHESIVE CURES. REFER TO DRYVIT PUBLICATION DS217.

*The architecture, engineering, and design of the project using the Dryvit and Tremco products are the responsibility of the project's design professional. All products and systems must comply with local building codes and standards. This detail is for general information and guidance only and Dryvit and Tremco specifically disclaims any liability for the use of this detail. The project design professional determines, in its sole discretion, whether this detail or a functionally equivalent detail is best suited for the project. This detail is subject to change without notice. Contact Dryvit or Tremco to ensure you have the most recent version.*

**Fedderlite® Panel System**



Dryvit Technical Support: 800-556-7752

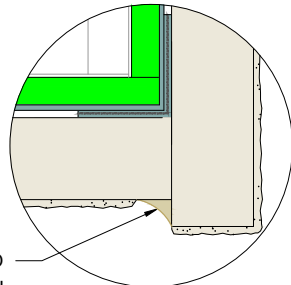
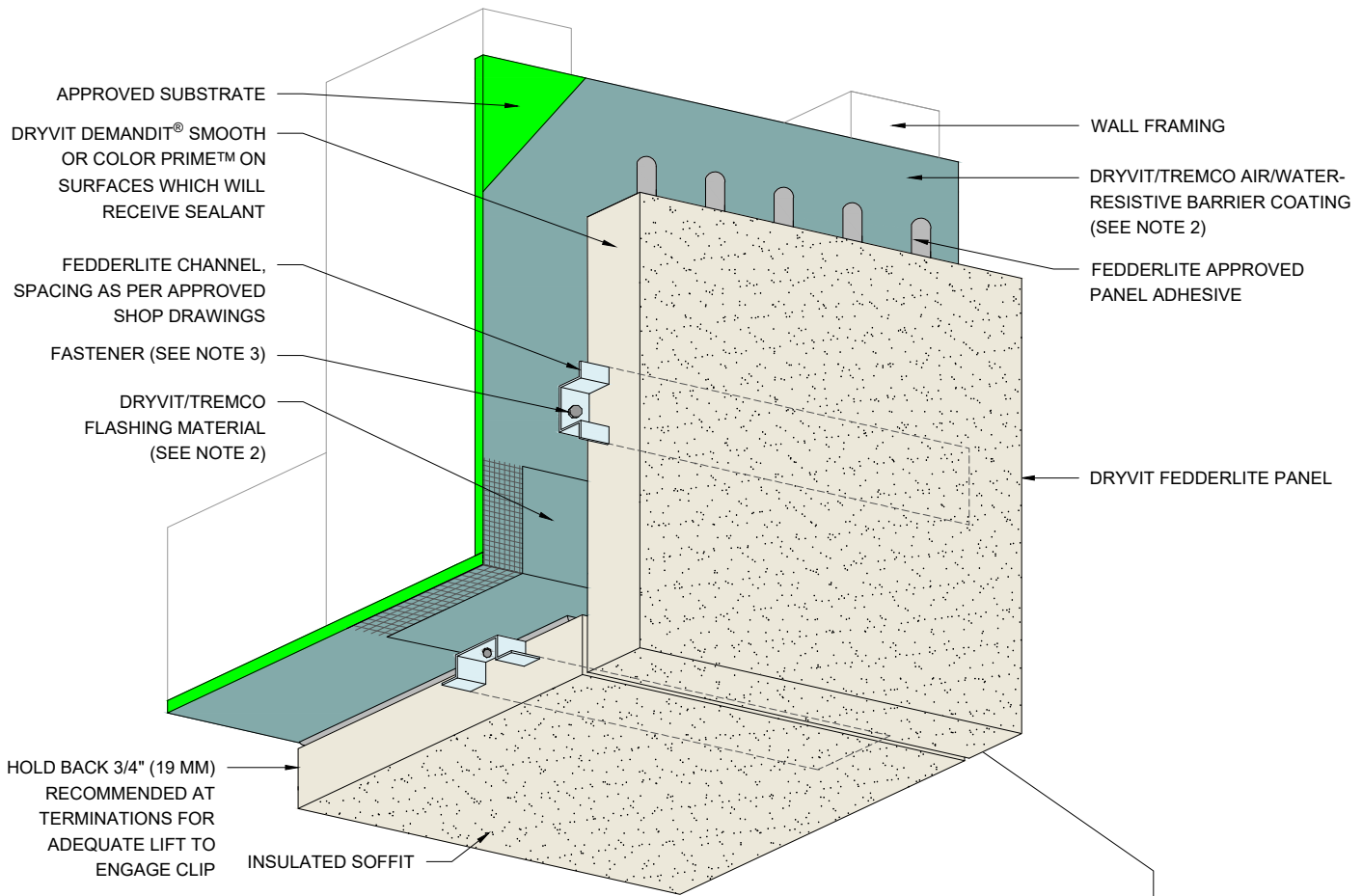
Detail: Sill				File Name:	
Drawn by: HDE	Checked by: RB CW	Scale: NTS	Date: 9/28/2023	FL 22	

www.tremcocpg.com



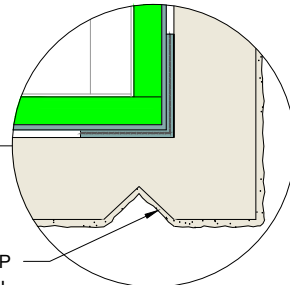
Construction Products Group





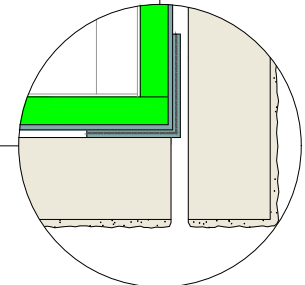
DRYVIT/TREMCO APPROVED SEALANT WITH BOND BREAKER TAPE

**WITHOUT MOISTURE DRAINAGE**



DRIP REVEAL

**CORNER PANEL OPTION  
WITHOUT MOISTURE DRAINAGE**



**MOISTURE DRAINAGE OPTION**

**NOTES:**

1. DRYVIT RECOMMENDS THAT GROUND FLOOR APPLICATIONS AND ALL FACADES EXPOSED TO ABNORMAL STRESS, HIGH TRAFFIC, OR DELIBERATE IMPACT HAVE THE BASE COAT REINFORCED WITH PANZER® MESH PRIOR TO STANDARD OR STANDARD PLUS MESH. LOCATION OF HIGH IMPACT ZONES SHOULD BE INDICATED ON CONTRACT DRAWINGS.
2. REFER TO DRYVIT PUBLICATION DS840 FOR AWRB AND FLASHING APPLICATION.
3. MECHANICAL ATTACHMENTS ARE NECESSARY TO SUPPORT THE PANEL UNTIL THE ADHESIVE CURES. REFER TO DRYVIT PUBLICATION DS217.

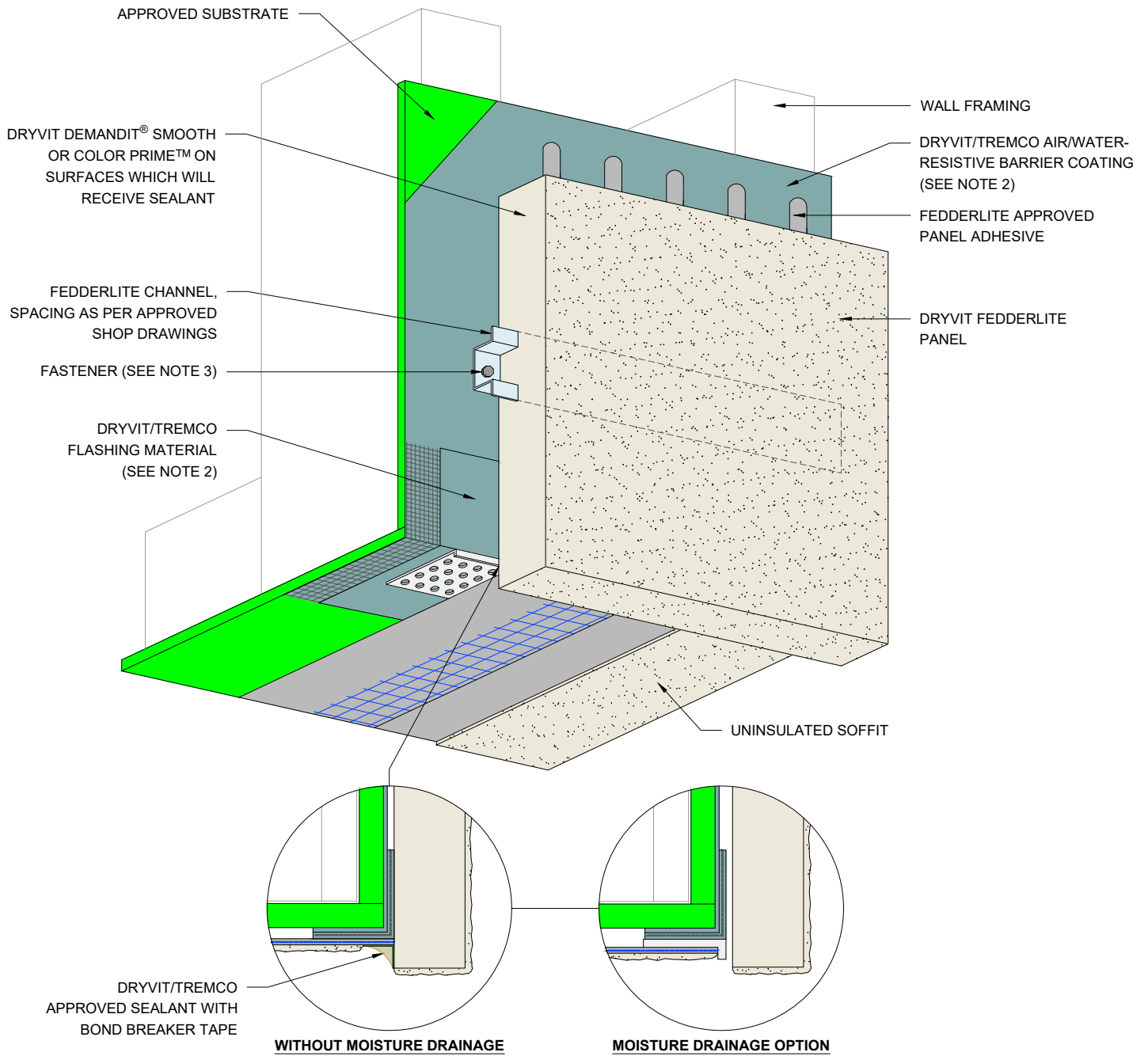
*The architecture, engineering, and design of the project using the Dryvit and Tremco products are the responsibility of the project's design professional. All products and systems must comply with local building codes and standards. This detail is for general information and guidance only and Dryvit and Tremco specifically disclaims any liability for the use of this detail. The project design professional determines, in its sole discretion, whether this detail or a functionally equivalent detail is best suited for the project. This detail is subject to change without notice. Contact Dryvit or Tremco to ensure you have the most recent version.*

**Fedderlite® Panel System**



Detail: Transition at Fascia/Soffit Intersection - Insulated				File Name:	
Drawn by: HDE	Checked by: RB CW	Scale: NTS	Date: 9/28/2023	FL 23	
<a href="http://www.tremcocpg.com">www.tremcocpg.com</a>					





**NOTES:**

1. DRYVIT RECOMMENDS THAT GROUND FLOOR APPLICATIONS AND ALL FACADES EXPOSED TO ABNORMAL STRESS, HIGH TRAFFIC, OR DELIBERATE IMPACT HAVE THE BASE COAT REINFORCED WITH PANZER® MESH PRIOR TO STANDARD OR STANDARD PLUS MESH. LOCATION OF HIGH IMPACT ZONES SHOULD BE INDICATED ON CONTRACT DRAWINGS.
2. REFER TO DRYVIT PUBLICATION DS840 FOR AWRB AND FLASHING APPLICATION.
3. MECHANICAL ATTACHMENTS ARE NECESSARY TO SUPPORT THE PANEL UNTIL THE ADHESIVE CURES. REFER TO DRYVIT PUBLICATION DS217.

*The architecture, engineering, and design of the project using the Dryvit and Tremco products are the responsibility of the project's design professional. All products and systems must comply with local building codes and standards. This detail is for general information and guidance only and Dryvit and Tremco specifically disclaims any liability for the use of this detail. The project design professional determines, in its sole discretion, whether this detail or a functionally equivalent detail is best suited for the project. This detail is subject to change without notice. Contact Dryvit or Tremco to ensure you have the most recent version.*

**Fedderlite® Panel System**



Dryvit Technical Support: 800-556-7752

Detail: Transition at Fascia/Soffit Intersection - Uninsulated

Drawn by: HDE

Checked by: RB  
CW

Scale: NTS

Date: 9/28/2023

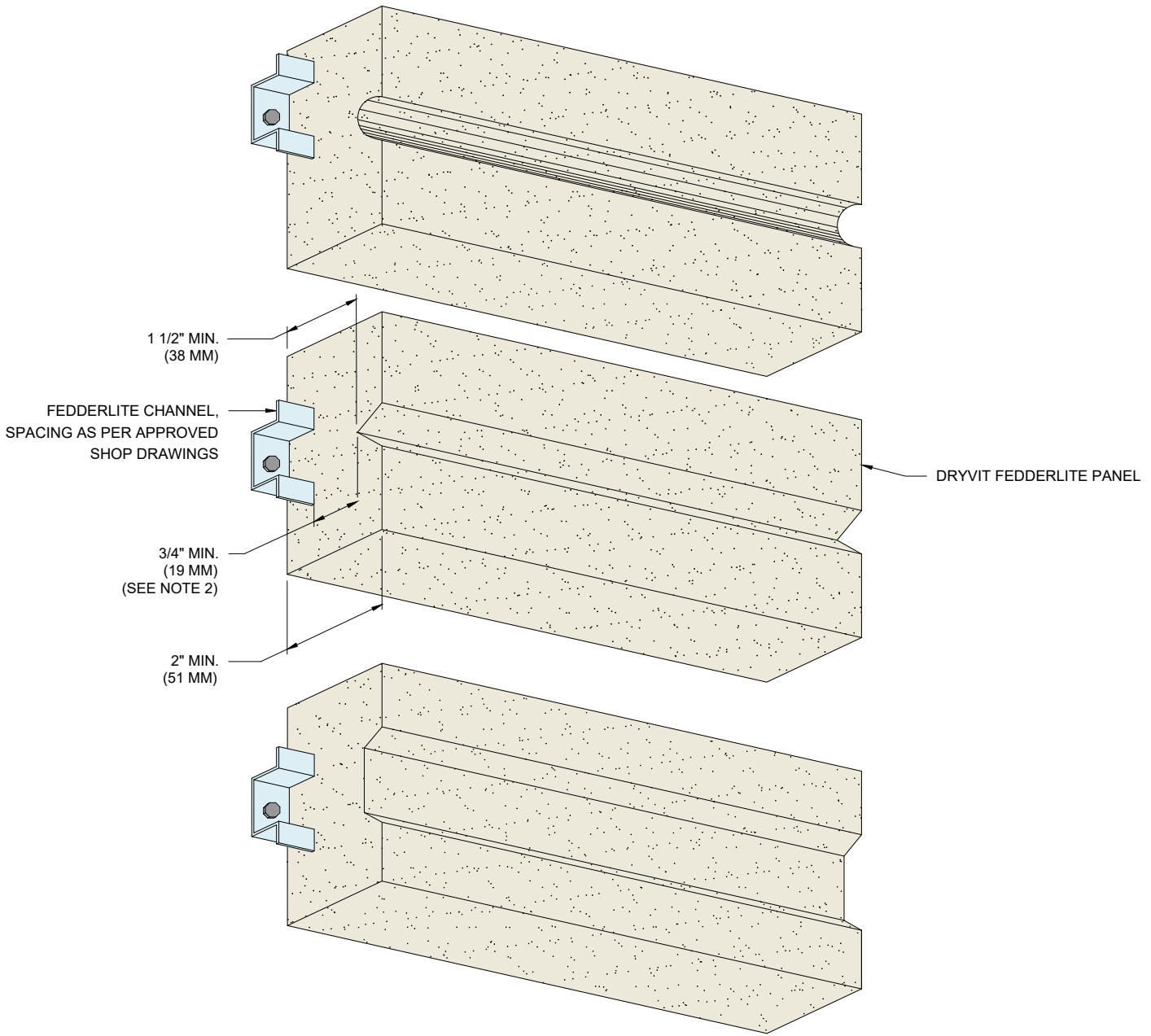
File Name:

FL 24



Construction Products Group

www.tremcocpg.com



**NOTES:**

1. DRYVIT RECOMMENDS THAT GROUND FLOOR APPLICATIONS AND ALL FACADES EXPOSED TO ABNORMAL STRESS, HIGH TRAFFIC, OR DELIBERATE IMPACT HAVE THE BASE COAT REINFORCED WITH PANZER® MESH PRIOR TO STANDARD OR STANDARD PLUS MESH. LOCATION OF HIGH IMPACT ZONES SHOULD BE INDICATED ON CONTRACT DRAWINGS.
2. MAINTAIN 3/4" (19 MM) MIN. EPS THICKNESS BETWEEN REVEAL AND CHANNEL.

*The architecture, engineering, and design of the project using the Dryvit and Tremco products are the responsibility of the project's design professional. All products and systems must comply with local building codes and standards. This detail is for general information and guidance only and Dryvit and Tremco specifically disclaims any liability for the use of this detail. The project design professional determines, in its sole discretion, whether this detail or a functionally equivalent detail is best suited for the project. This detail is subject to change without notice. Contact Dryvit or Tremco to ensure you have the most recent version.*

**Fedderlite® Panel System**



Detail: Typical Aesthetic Reveals

File Name:

Drawn by: HDE

Checked by: RB  
CW

Scale: NTS

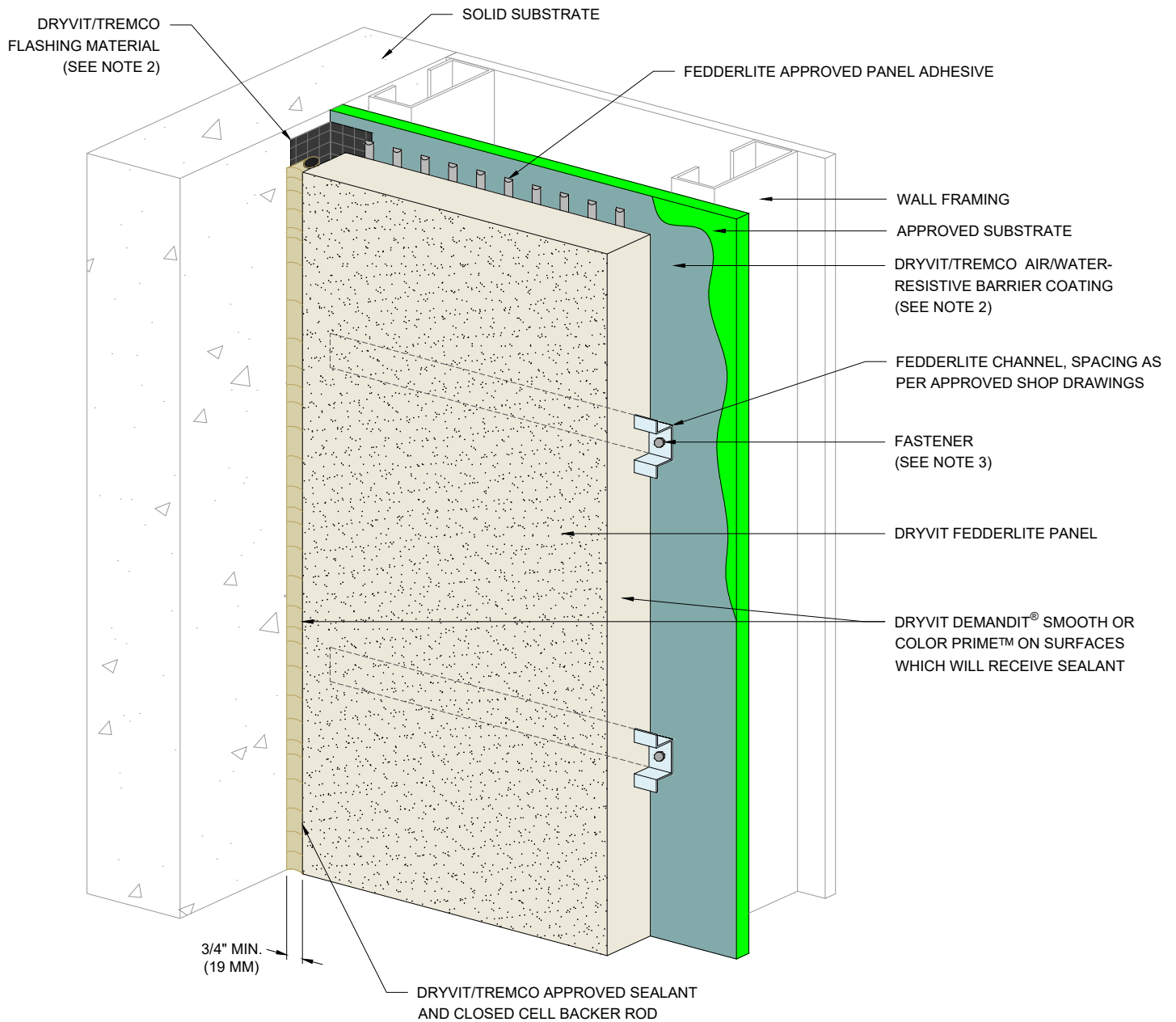
Date: 9/28/2023

FL 25



Dryvit Technical Support: 800-556-7752

[www.tremcocpg.com](http://www.tremcocpg.com)



**NOTES:**

1. DRYVIT RECOMMENDS THAT GROUND FLOOR APPLICATIONS AND ALL FACADES EXPOSED TO ABNORMAL STRESS, HIGH TRAFFIC, OR DELIBERATE IMPACT HAVE THE BASE COAT REINFORCED WITH PANZER® MESH PRIOR TO STANDARD OR STANDARD PLUS MESH. LOCATION OF HIGH IMPACT ZONES SHOULD BE INDICATED ON CONTRACT DRAWINGS.
2. REFER TO DRYVIT PUBLICATION DS840 FOR AWRB AND FLASHING APPLICATION.
3. MECHANICAL ATTACHMENTS ARE NECESSARY TO SUPPORT THE PANEL UNTIL THE ADHESIVE CURES. REFER TO DRYVIT PUBLICATION DS217.

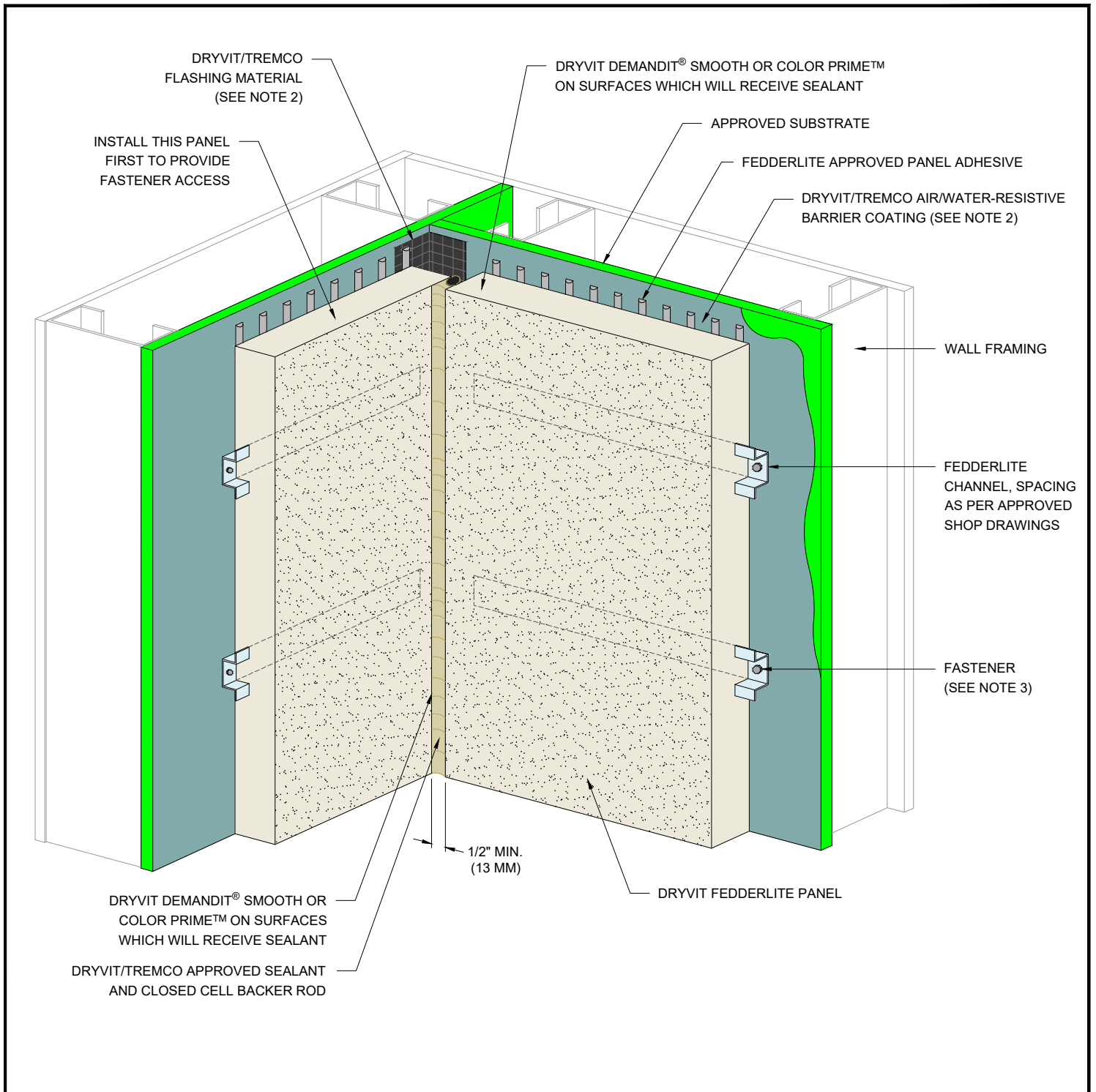
*The architecture, engineering, and design of the project using the Dryvit and Tremco products are the responsibility of the project's design professional. All products and systems must comply with local building codes and standards. This detail is for general information and guidance only and Dryvit and Tremco specifically disclaims any liability for the use of this detail. The project design professional determines, in its sole discretion, whether this detail or a functionally equivalent detail is best suited for the project. This detail is subject to change without notice. Contact Dryvit or Tremco to ensure you have the most recent version.*

**Fedderlite® Panel System**



Detail: Termination at Dissimilar Materials				File Name:	
Drawn by: HDE	Checked by: RB CW	Scale: NTS	Date: 9/28/2023	FL 26	
<a href="http://www.tremcocpg.com">www.tremcocpg.com</a>					





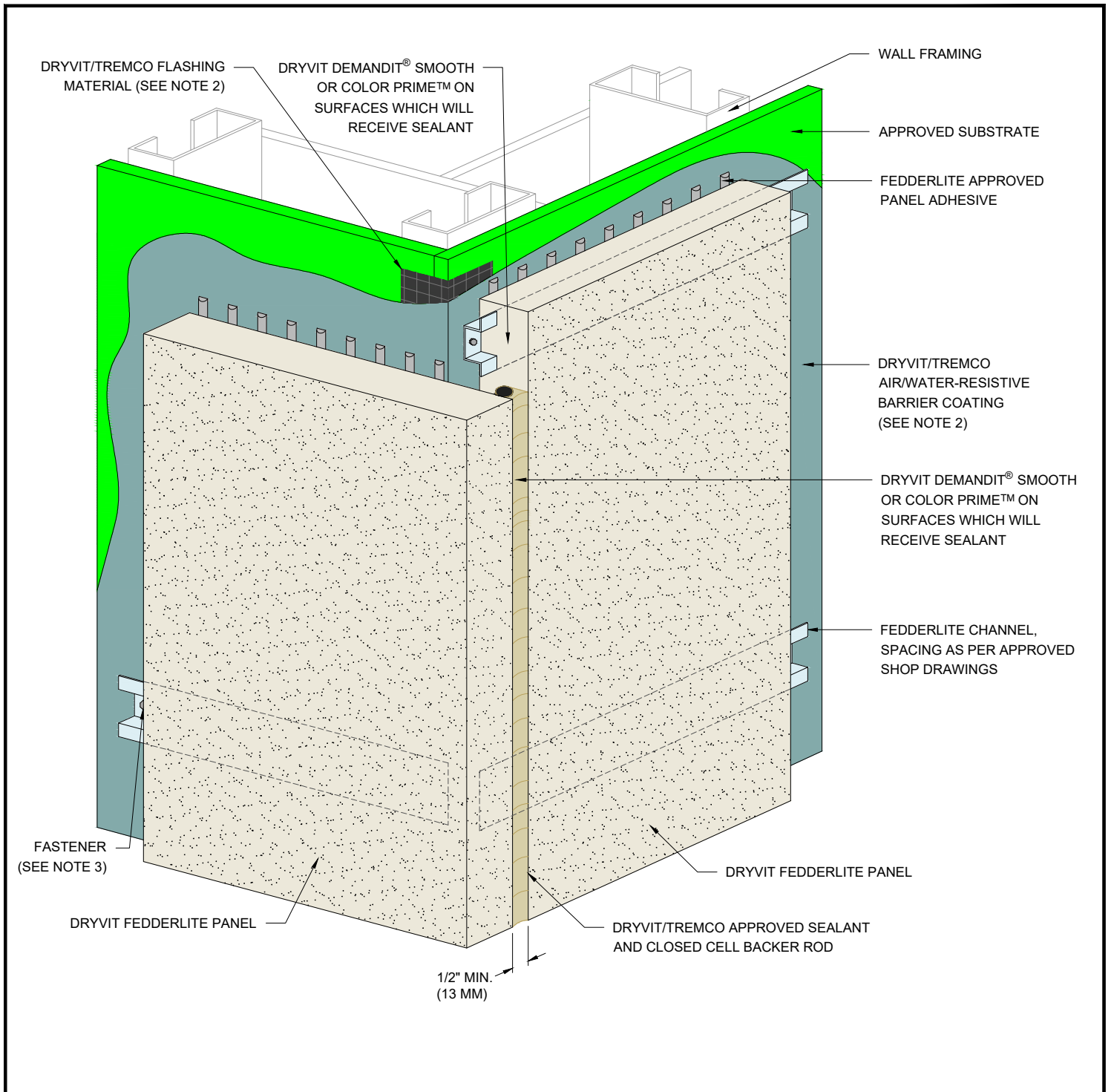
**NOTES:**

1. DRYVIT RECOMMENDS THAT GROUND FLOOR APPLICATIONS AND ALL FACADES EXPOSED TO ABNORMAL STRESS, HIGH TRAFFIC, OR DELIBERATE IMPACT HAVE THE BASE COAT REINFORCED WITH PANZER® MESH PRIOR TO STANDARD OR STANDARD PLUS MESH. LOCATION OF HIGH IMPACT ZONES SHOULD BE INDICATED ON CONTRACT DRAWINGS.
2. REFER TO DRYVIT PUBLICATION DS840 FOR AWRB AND FLASHING APPLICATION.
3. MECHANICAL ATTACHMENTS ARE NECESSARY TO SUPPORT THE PANEL UNTIL THE ADHESIVE CURES. REFER TO DRYVIT PUBLICATION DS217.

*The architecture, engineering, and design of the project using the Dryvit and Tremco products are the responsibility of the project's design professional. All products and systems must comply with local building codes and standards. This detail is for general information and guidance only and Dryvit and Tremco specifically disclaims any liability for the use of this detail. The project design professional determines, in its sole discretion, whether this detail or a functionally equivalent detail is best suited for the project. This detail is subject to change without notice. Contact Dryvit or Tremco to ensure you have the most recent version.*

**Fedderlite® Panel System**

 Dryvit Technical Support: 800-556-7752	Detail: Inside Corner Joint			File Name:		 Construction Products Group
	Drawn by: HDE	Checked by: RB CW	Scale: NTS	Date: 9/28/2023	FL 27	
www.tremcocpg.com						



NOTES:

1. DRYVIT RECOMMENDS THAT GROUND FLOOR APPLICATIONS AND ALL FACADES EXPOSED TO ABNORMAL STRESS, HIGH TRAFFIC, OR DELIBERATE IMPACT HAVE THE BASE COAT REINFORCED WITH PANZER® MESH PRIOR TO STANDARD OR STANDARD PLUS MESH. LOCATION OF HIGH IMPACT ZONES SHOULD BE INDICATED ON CONTRACT DRAWINGS.
2. REFER TO DRYVIT PUBLICATION DS840 FOR AWRB AND FLASHING APPLICATION.
3. MECHANICAL ATTACHMENTS ARE NECESSARY TO SUPPORT THE PANEL UNTIL THE ADHESIVE CURES. REFER TO DRYVIT PUBLICATION DS217.

The architecture, engineering, and design of the project using the Dryvit and Tremco products are the responsibility of the project's design professional. All products and systems must comply with local building codes and standards. This detail is for general information and guidance only and Dryvit and Tremco specifically disclaims any liability for the use of this detail. The project design professional determines, in its sole discretion, whether this detail or a functionally equivalent detail is best suited for the project. This detail is subject to change without notice. Contact Dryvit or Tremco to ensure you have the most recent version.

Fedderlite® Panel System

 Dryvit Technical Support: 800-556-7752	Detail: Outside Corner Joint				File Name:	
	Drawn by: HDE	Checked by: RB CW	Scale: NTS	Date: 9/28/2023	FL 28	
 Construction Products Group						

DRYVIT DEMANDIT® SMOOTH OR COLOR PRIME™ ON SURFACES WHICH WILL RECEIVE SEALANT

APPROVED SUBSTRATE

FEDDERLITE APPROVED PANEL ADHESIVE

DRYVIT/TREMCO AIR/WATER-RESISTIVE BARRIER COATING (SEE NOTE 2)

WALL FRAMING

FEDDERLITE CHANNEL, SPACING AS PER APPROVED SHOP DRAWINGS

FASTENER (SEE NOTE 3)

DRYVIT FEDDERLITE PANEL

NOTES:

1. DRYVIT RECOMMENDS THAT GROUND FLOOR APPLICATIONS AND ALL FACADES EXPOSED TO ABNORMAL STRESS, HIGH TRAFFIC, OR DELIBERATE IMPACT HAVE THE BASE COAT REINFORCED WITH PANZER® MESH PRIOR TO STANDARD OR STANDARD PLUS MESH. LOCATION OF HIGH IMPACT ZONES SHOULD BE INDICATED ON CONTRACT DRAWINGS.
2. REFER TO DRYVIT PUBLICATION DS840 FOR AWRB AND FLASHING APPLICATION.
3. MECHANICAL ATTACHMENTS ARE NECESSARY TO SUPPORT THE PANEL UNTIL THE ADHESIVE CURES. REFER TO DRYVIT PUBLICATION DS217.

*The architecture, engineering, and design of the project using the Dryvit and Tremco products are the responsibility of the project's design professional. All products and systems must comply with local building codes and standards. This detail is for general information and guidance only and Dryvit and Tremco specifically disclaims any liability for the use of this detail. The project design professional determines, in its sole discretion, whether this detail or a functionally equivalent detail is best suited for the project. This detail is subject to change without notice. Contact Dryvit or Tremco to ensure you have the most recent version.*

Fedderlite® Panel System



Dryvit Technical Support: 800-556-7752

Detail: Inside Corner Panel

Drawn by: HDE

Checked by: RB  
CW

Scale: NTS

Date: 9/28/2023

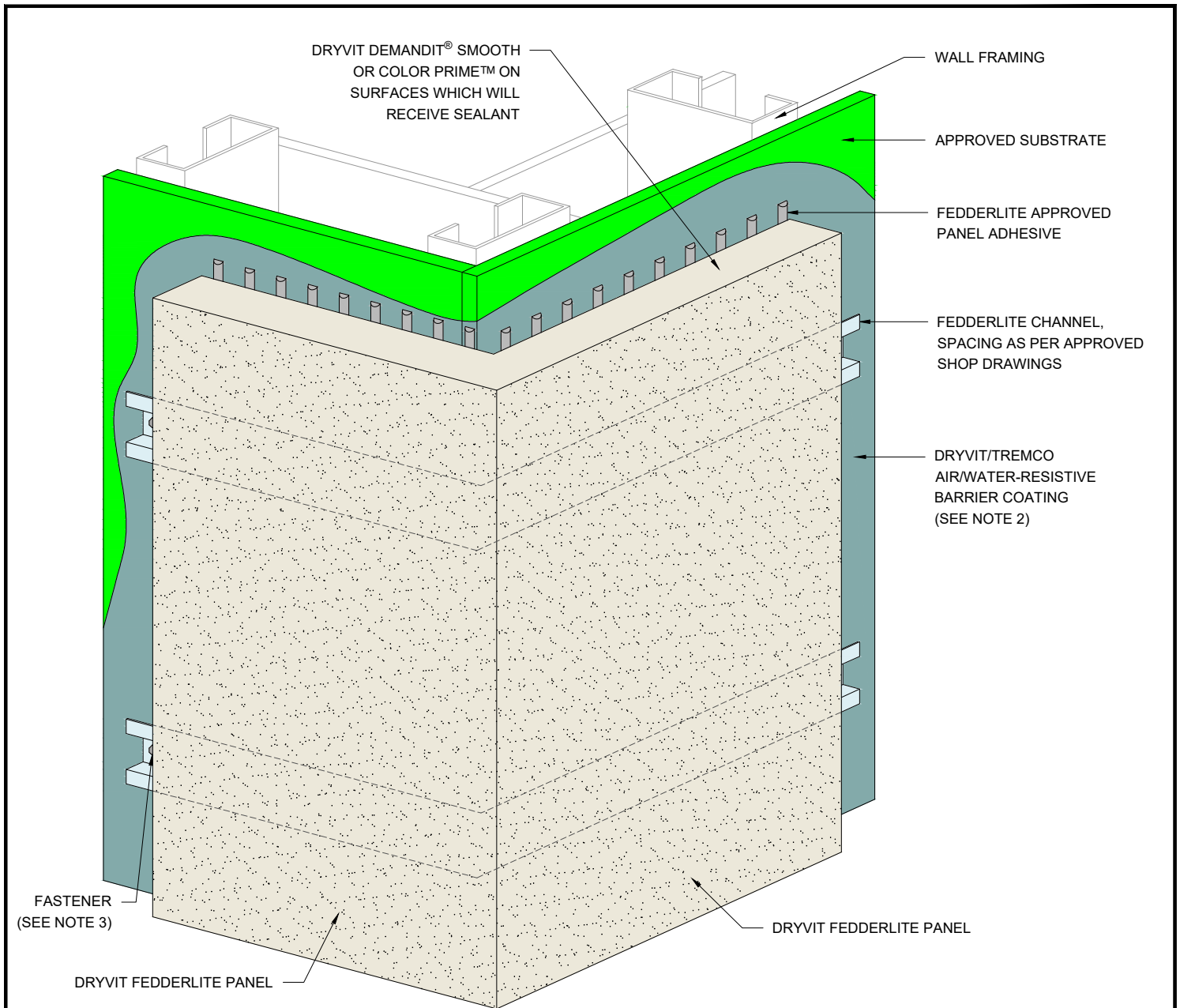
File Name:

FL 29



Construction Products Group

www.tremcocpg.com



NOTES:

1. DRYVIT RECOMMENDS THAT GROUND FLOOR APPLICATIONS AND ALL FACADES EXPOSED TO ABNORMAL STRESS, HIGH TRAFFIC, OR DELIBERATE IMPACT HAVE THE BASE COAT REINFORCED WITH PANZER® MESH PRIOR TO STANDARD OR STANDARD PLUS MESH. LOCATION OF HIGH IMPACT ZONES SHOULD BE INDICATED ON CONTRACT DRAWINGS.
2. REFER TO DRYVIT PUBLICATION DS840 FOR AWRB AND FLASHING APPLICATION.
3. MECHANICAL ATTACHMENTS ARE NECESSARY TO SUPPORT THE PANEL UNTIL THE ADHESIVE CURES. REFER TO DRYVIT PUBLICATION DS217.

*The architecture, engineering, and design of the project using the Dryvit and Tremco products are the responsibility of the project's design professional. All products and systems must comply with local building codes and standards. This detail is for general information and guidance only and Dryvit and Tremco specifically disclaims any liability for the use of this detail. The project design professional determines, in its sole discretion, whether this detail or a functionally equivalent detail is best suited for the project. This detail is subject to change without notice. Contact Dryvit or Tremco to ensure you have the most recent version.*

Fedderlite® Panel System



Dryvit Technical Support: 800-556-7752

Detail: Outside Corner Panel

Drawn by: HDE

Checked by: RB  
CW

Scale: NTS

Date: 9/28/2023

File Name:

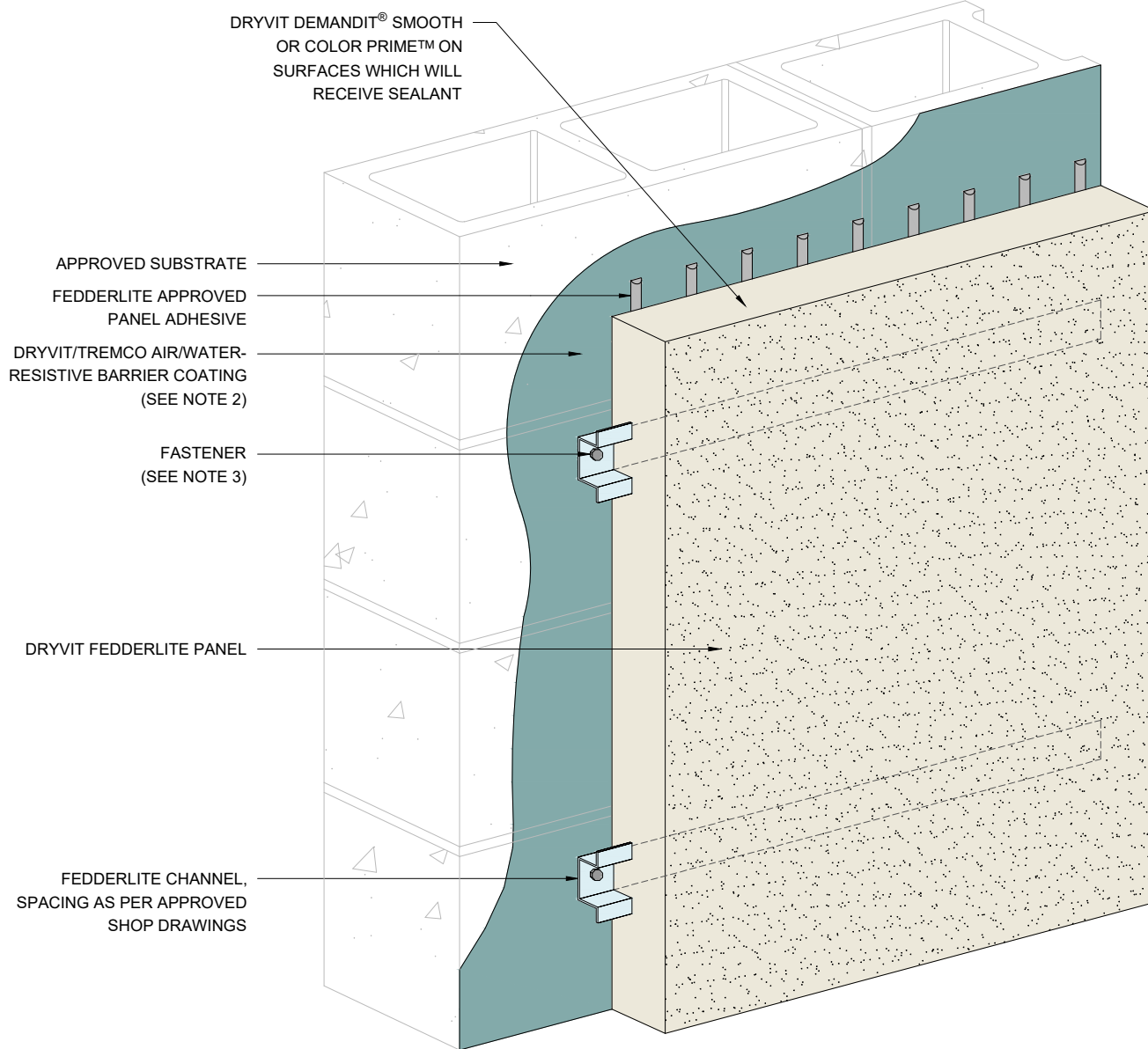
FL 30



Construction Products Group

www.tremcocpg.com





**NOTES:**

1. DRYVIT RECOMMENDS THAT GROUND FLOOR APPLICATIONS AND ALL FACADES EXPOSED TO ABNORMAL STRESS, HIGH TRAFFIC, OR DELIBERATE IMPACT HAVE THE BASE COAT REINFORCED WITH PANZER® MESH PRIOR TO STANDARD OR STANDARD PLUS MESH. LOCATION OF HIGH IMPACT ZONES SHOULD BE INDICATED ON CONTRACT DRAWINGS.
2. REFER TO DRYVIT PUBLICATION DS840 FOR AWRB AND FLASHING APPLICATION.
3. MECHANICAL ATTACHMENTS ARE NECESSARY TO SUPPORT THE PANEL UNTIL THE ADHESIVE CURES. REFER TO DRYVIT PUBLICATION DS217.

*The architecture, engineering, and design of the project using the Dryvit and Tremco products are the responsibility of the project's design professional. All products and systems must comply with local building codes and standards. This detail is for general information and guidance only and Dryvit and Tremco specifically disclaims any liability for the use of this detail. The project design professional determines, in its sole discretion, whether this detail or a functionally equivalent detail is best suited for the project. This detail is subject to change without notice. Contact Dryvit or Tremco to ensure you have the most recent version.*

**Fedderlite® Panel System**



Dryvit Technical Support: 800-556-7752

Detail: Face Fastening to Solid Substrate

Drawn by: HDE

Checked by: RB  
CW

Scale: NTS

Date: 9/28/2023

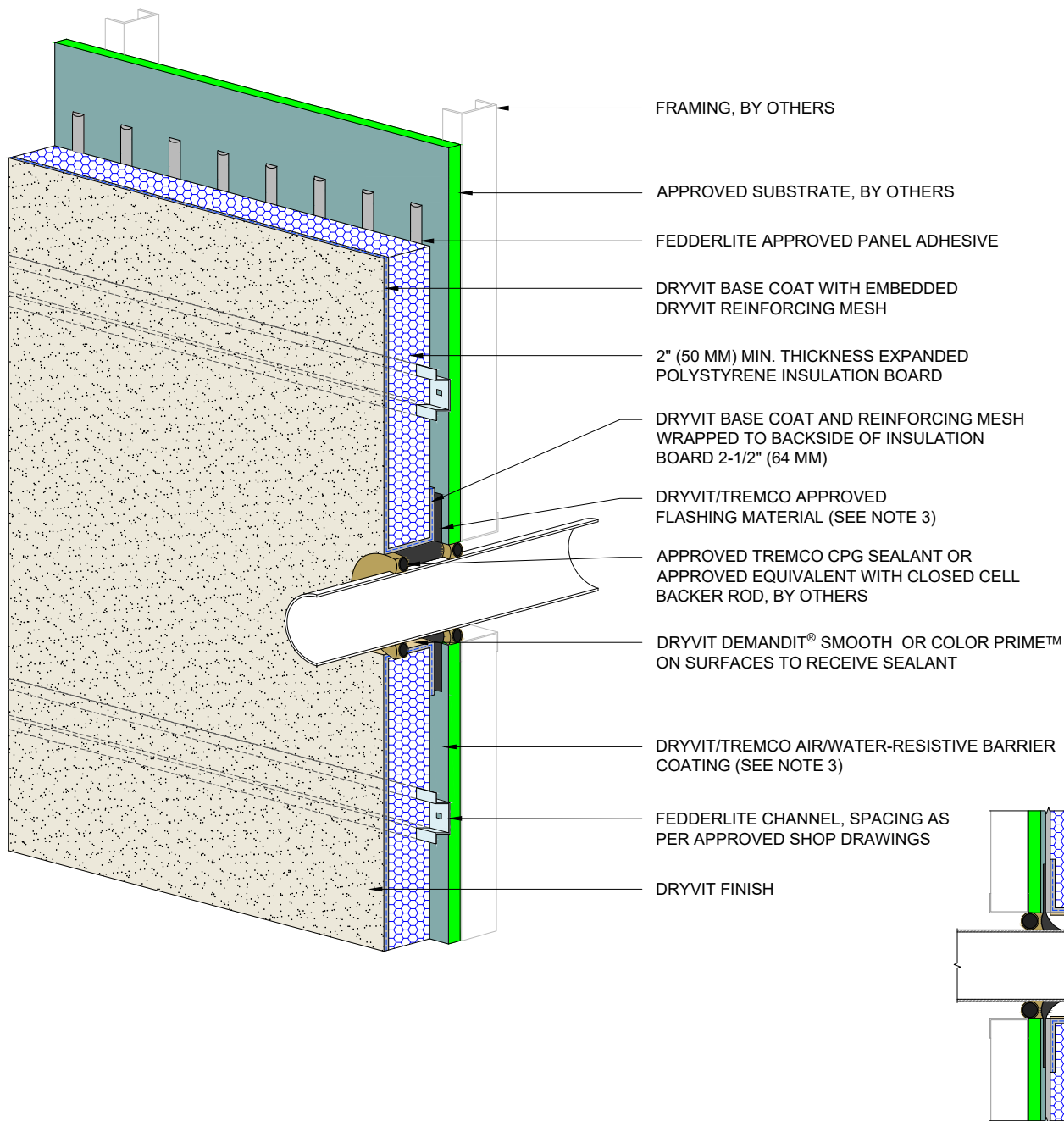
File Name:

FL 31



Construction Products Group

www.tremcocpg.com



- FRAMING, BY OTHERS
- APPROVED SUBSTRATE, BY OTHERS
- FEDDERLITE APPROVED PANEL ADHESIVE
- DRYVIT BASE COAT WITH EMBEDDED DRYVIT REINFORCING MESH
- 2" (50 MM) MIN. THICKNESS EXPANDED POLYSTYRENE INSULATION BOARD
- DRYVIT BASE COAT AND REINFORCING MESH WRAPPED TO BACKSIDE OF INSULATION BOARD 2-1/2" (64 MM)
- DRYVIT/TREMCO APPROVED FLASHING MATERIAL (SEE NOTE 3)
- APPROVED TREMCO CPG SEALANT OR APPROVED EQUIVALENT WITH CLOSED CELL BACKER ROD, BY OTHERS
- DRYVIT DEMANDIT® SMOOTH OR COLOR PRIME™ ON SURFACES TO RECEIVE SEALANT
- DRYVIT/TREMCO AIR/WATER-RESISTIVE BARRIER COATING (SEE NOTE 3)
- FEDDERLITE CHANNEL, SPACING AS PER APPROVED SHOP DRAWINGS
- DRYVIT FINISH

**NOTES:**

1. DRYVIT RECOMMENDS THAT GROUND FLOOR APPLICATIONS AND ALL FACADES EXPOSED TO ABNORMAL STRESS, HIGH TRAFFIC, OR DELIBERATE IMPACT HAVE THE BASE COAT REINFORCED WITH PANZER® MESH PRIOR TO STANDARD OR STANDARD PLUS MESH. LOCATION OF HIGH IMPACT ZONES SHOULD BE INDICATED ON CONTRACT DRAWINGS.
2. LIGHT GAUGE STEEL FRAME SHALL BE DESIGNED FOR SPECIFIC PROJECT LOADS AND CONDITIONS TO MEET LOCAL BUILDING CODES BY LICENSED ENGINEER.
3. REFER TO DRYVIT PUBLICATION DS840 FOR AWRB AND FLASHING APPLICATION.

*The architecture, engineering, and design of the project using the Dryvit and Tremco products are the responsibility of the project's design professional. All products and systems must comply with local building codes and standards. This detail is for general information and guidance only and Dryvit and Tremco specifically disclaims any liability for the use of this detail. The project design professional determines, in its sole discretion, whether this detail or a functionally equivalent detail is best suited for the project. This detail is subject to change without notice. Contact Dryvit or Tremco to ensure you have the most recent version.*

**Fedderlite® Panel System**



Detail: Penetration				File Name:	
Drawn by: HDE	Checked by: RB CW	Scale: NTS	Date: 9/28/2023	FL 32	
<a href="http://www.tremcocpg.com">www.tremcocpg.com</a>					

