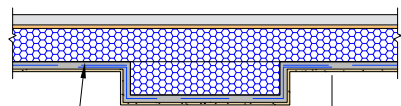


OUTSULITE PANEL

SLOPE SURFACE 6:12 MIN. FOR POSITIVE DRAINAGE. MAXIMUM LENGTH OF SLOPED SURFACE IS 12" (305 MM)

EPS SHAPE MEETING DRYVIT SPECIFICATION DS131 (SEE NOTE 3)

SECTION VIEW



DRYVIT REINFORCING MESH EMBEDDED IN DRYVIT BASE COAT. OVERLAP REINFORCING MESH 2 1/2" (64 MM) MIN.

2 1/2" (64 MM) MIN.

NOTE:

1. DRYVIT RECOMMENDS THAT GROUND FLOOR APPLICATIONS AND ALL FACADES EXPOSED TO ABNORMAL STRESS, HIGH TRAFFIC, OR DELIBERATE IMPACT HAVE THE BASE COAT REINFORCED WITH PANZER® MESH PRIOR TO STANDARD OR STANDARD PLUS MESH. LOCATION OF HIGH IMPACT ZONES SHOULD BE INDICATED ON CONTRACT DRAWINGS.
2. APPLY DYMONIC 100 AT 40 MILS 1" (25 MM) MIN. ONTO FACE OF SECUROCK EXOAIR 430 PANEL AND 1-5/8" (41 MM) MIN. ONTO OUTSULITE PANEL EDGE.
3. EPS THICKNESS IS DICTATED BY LOCAL CODE AUTHORITY AND APPLICABLE TESTING.

The architecture, engineering, and design of the project using the Dryvit Tremco and USG products are the responsibility of the project's design professional. All products and systems must comply with local building codes and standards. This detail is for general information and guidance only and Dryvit Tremco and USG specifically disclaims any liability for the use of this detail. The project design professional determines, in its sole discretion, whether this detail or a functionally equivalent detail is best suited for the project. This detail is subject to change without notice. Contact Dryvit Tremco and USG to ensure you have the most recent version.



Dryvit Technical Support: 800-556-7752

Outsulite® Securock® ExoAir® 430 Panel System

<p>SECUROCK® EXOAIR® 430</p> <p>Technical Support: 866-209-2404</p>	Detail: EPS Shapes			File Name:	<p>Construction Products Group</p>
	Drawn by: HDE	Checked by:	Scale: NTS	Date: 1/18/2023	
www.tremcocpg.com					