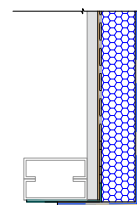
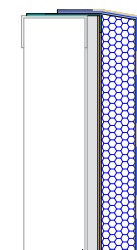


**SECTION A-A
HEAD**



**SECTION B-B
JAMB**



**SECTION C-C
SILL**

OUTSULITE PANEL (SEE NOTE 2)

DRYVIT DEMANDIT® SMOOTH OR COLOR PRIME™ ON SURFACES TO RECEIVE SEALANT (SEE NOTE 2)

DYMONIC 100 (SEE NOTE 3)

NOTE:

1. DRYVIT RECOMMENDS THAT GROUND FLOOR APPLICATIONS AND ALL FACADES EXPOSED TO ABNORMAL STRESS, HIGH TRAFFIC, OR DELIBERATE IMPACT HAVE THE BASE COAT REINFORCED WITH PANZER® MESH PRIOR TO STANDARD OR STANDARD PLUS MESH. LOCATION OF HIGH IMPACT ZONES SHOULD BE INDICATED ON CONTRACT DRAWINGS.
2. COORDINATE WITH WINDOW SHOP DRAWINGS FOR TERMINATION OF FINISH.
3. APPLY DYMONIC 100 AT 40 MILS 1" (25 MM) MIN. ONTO FACE OF SECUROCK EXOAIR 430 PANEL AND 1-5/8" (41 MM) MIN. ONTO OUTSULITE PANEL EDGE. APPLY DYMONIC 100 AT 40 MILS 1 5/8" (41 MM) MIN. INTO ROUGH OPENING OR PAST PRIMARY SEAL OF WINDOW, WHICHEVER IS GREATER.



Dryvit Technical Support: 800-556-7752

The architecture, engineering, and design of the project using the Dryvit Tremco and USG products are the responsibility of the project's design professional. All products and systems must comply with local building codes and standards. This detail is for general information and guidance only and Dryvit Tremco and USG specifically disclaims any liability for the use of this detail. The project design professional determines, in its sole discretion, whether this detail or a functionally equivalent detail is best suited for the project. This detail is subject to change without notice. Contact Dryvit Tremco and USG to ensure you have the most recent version.

Outsulite® Securock® ExoAir® 430 Panel System



Technical Support: 866-209-2404

Detail: Termination at Openings

File Name:

Drawn by: HDE

Checked by:

Scale: NTS

Date: 1/9/2023

OSL SE430-7

www.tremcocpg.com

