

FEDDERLITE®

MODULITE™

Prefabricated Solutions

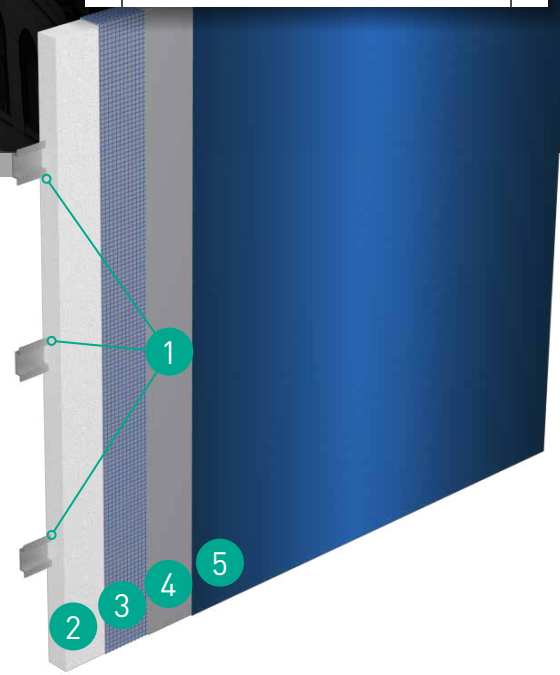
Prefabricated Exterior Wall Insulation and Finish System for Use over Solid Substrates

Product Overview

Fedderlite® is a lightweight panel system for use in new construction or retrofit over solid substrates.

This panel utilizes a unique process for embedding reinforcing channels into the continuous insulation to provide a means for handling, as well as mechanical attachment to the wall.

Fedderlite panels may be adhered or mechanically fastened to approved substrates.



Features & Benefits

- Ultra-Lightweight (approximately 2.5 lb/ft²) construction for easier handling and on-site installation
- Panels must be attached to a smooth, solid substrate for streamlined installation
- Unique, embedded reinforcing channels provide strength and enhanced handling
- Can be adhered, or mechanically fastened to approved substrates

System Components

1	Fedderlite Channels
2	Expanded Polystyrene (EPS)
3	Reinforcing Mesh (<i>Embedded in Base Coat</i>)
4	Base Coat
5	Finish Coat (<i>Shown: Reflectit™ Smooth. See pg. 8</i>)



Sandpebble fine finish, in a custom color



Custom red Reflectit finish, over Sandpebble fine

Why Build with Modulite Prefabricated Panels?

Speed construction or restoration. Simplify installation. Extend the construction season. A structure built with Modulite prefabricated panels means more for everyone – more satisfied contractors, more comfortable occupants or tenants, and more efficient structures and cost-effective operation for owners.



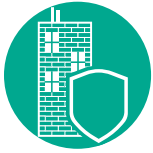
Faster Construction Time

In-plant fabrication can reduce production time, and speed up field application of exterior cladding systems, to reduce construction schedules.



Any Look You Want

A wide range of colors and finishes like brick, granite, metals, stucco and more provide maximum flexibility in your façade aesthetic.



Stronger and More Resilient

Our systems are designed for maximum durability, many with service lives far surpassing that of competing systems.



Avoid Labor Shortage Problems

Pre-fabricated Dryvit panels can help address ongoing shortages in the skilled labor force – while simultaneously maximizing quality control.



Cost-Effective for the Long Term

A broad range of products can fit most project budgets – but our energy-efficiency and maintenance solutions can also help you ensure cost-effective ownership and operation for the long term.



Better Insulated

Industry-leading Outsulation® continuous insulation means efficient construction and operation, and will exceed strict energy codes for insulation.



One Point of Contact

Our products and systems are backed by industry-leading warranties – all from a single point of contact. We can also help with everything from asset management to diagnostics to installer training.



Leading Edge Sustainability

Our building solutions help you reduce waste, and meet green building standards like Net Zero, Living Building Challenge, Passive House and more.

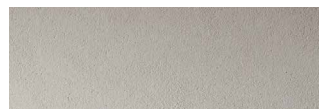
DRYVIT® FINISH OPTIONS | Choose from unlimited color and finish combinations!



AMERISTONE™



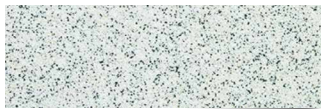
FERROS™



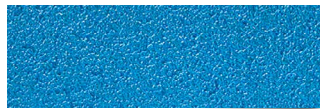
LYMESTONE™



QUARZPUTZ®



STONE MIST



REFLECTIT™ TEXTURE



CUSTOM BRICK™



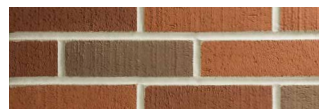
SANDPEBBLE™



TERRA NEO®



REFLECTIT™ SMOOTH



NEWBRICK™



TUSCAN GLAZE™

Dryvit Systems, Inc. | One Energy Way | West Warwick, RI, 02893 | 401.822.4100 | dryvit.com

Tremco Construction Products Group (CPG) brings together Tremco Incorporated's Commercial Sealants & Waterproofing and Roofing & Building Maintenance operating divisions; Dryvit Systems, Inc.; Nudura Inc.; Willseal; Weatherproofing Technologies, Inc. and Weatherproofing Technologies Canada, Inc.

Dryvit®, AquaFlash®, Backstop®, Outsulation®, Fedderlite®, Metalite®, Outsulite®, Quartzputz® and TerraNeo® are registered trademarks of Dryvit Systems, Inc. Ameristone™, Custom Brick™, Ferros™, Limestone™, NewBrick™, Reflectit™, Sandpebble™ and Tuscan Glaze™ are trademarks of Dryvit Systems, Inc. Use of the ® symbol indicates registration with the US Patent & Trademark Office and the Canadian Intellectual Property Office.

Part of



Construction Products Group