

# Outsulite™ Panel System



DS198

Prefabricated, Insulated, Light Gauge Steel Stud  
Exterior Wall Panels with an Air/Water Barrier

## Outsulite Panel System Installation Details



**DETAIL**

OUTSULITE PANEL SYSTEM	OSL - 01
OUTSULITE PANEL SYSTEM - HIGH IMPACT OPTION	OSL - 02
BOARD JOINT AND FASTENER TREATMENT	OSL - 03
ROUGH OPENING PREPARATION	OSL - 04
EPS BOARD INSTALLATION	OSL - 05
EPS PREPARATION AT WALL PENETRATIONS	OSL - 06
TERMINATION AT SLAB ON GRADE	OSL - 07
TERMINATION AT OPENINGS	OSL - 08
HEAD / SILL FLASHING INTEGRATION	OSL - 09
HORIZONTAL PANEL CONNECTION	OSL - 10
HORIZONTAL PANEL JOINT	OSL - 11
VERTICAL PANEL JOINT	OSL - 12
INSIDE CORNER JOINT	OSL - 13
OUTSIDE CORNER JOINT	OSL - 14
INSIDE CORNER PANEL	OSL - 15
OUTSIDE CORNER PANEL	OSL - 16
PARAPET PANEL - METAL COPING	OSL - 17
TERMINATION AT ROOF	OSL - 18
TERMINATION AT OTHER CLADDING	OSL - 19

**DETAIL**

PENETRATIONS	OSL - 20
SCUPPER TERMINATION	OSL - 21
VENT PENETRATION	OSL - 22
FASTENER THROUGH SYSTEM	OSL - 23
AESTHETIC REVEALS	OSL - 24
EPS SHAPES	OSL - 25

**NOTE**

DRYVIT MAKES NO REPRESENTATION REGARDING CONFORMITY OF ITS SUGGESTIONS TO MODEL BUILDING CODES, ENGINEERING CRITERIA, SPECIFIC APPLICATIONS, OR PROJECT LOCATIONS. ALL COMPONENTS INDICATED IN ILLUSTRATIONS, AS WELL AS OTHERS THAT MAY BE REQUIRED FOR THE INTEGRITY OF THE SYSTEM SHALL BE DESIGNED, DETAILED, AND ENGINEERED BY REPRESENTATIVES OF THE ARCHITECT, OWNER, OR CONTRACTOR TO BE IN CONFORMANCE WITH MODEL CODES, ARCHITECTURAL, AND ENGINEERING REQUIREMENTS PERTAINING TO SPECIFIC BUILDING PROJECTS.

DRYVIT MAKES NO WARRANTY, EXPRESSED OR IMPLIED, AS TO THE ARCHITECTURAL DESIGN, OR ENGINEERING, OR WORKMANSHIP OF PROJECTS UTILIZING DRYVIT SYSTEMS OR PRODUCTS.

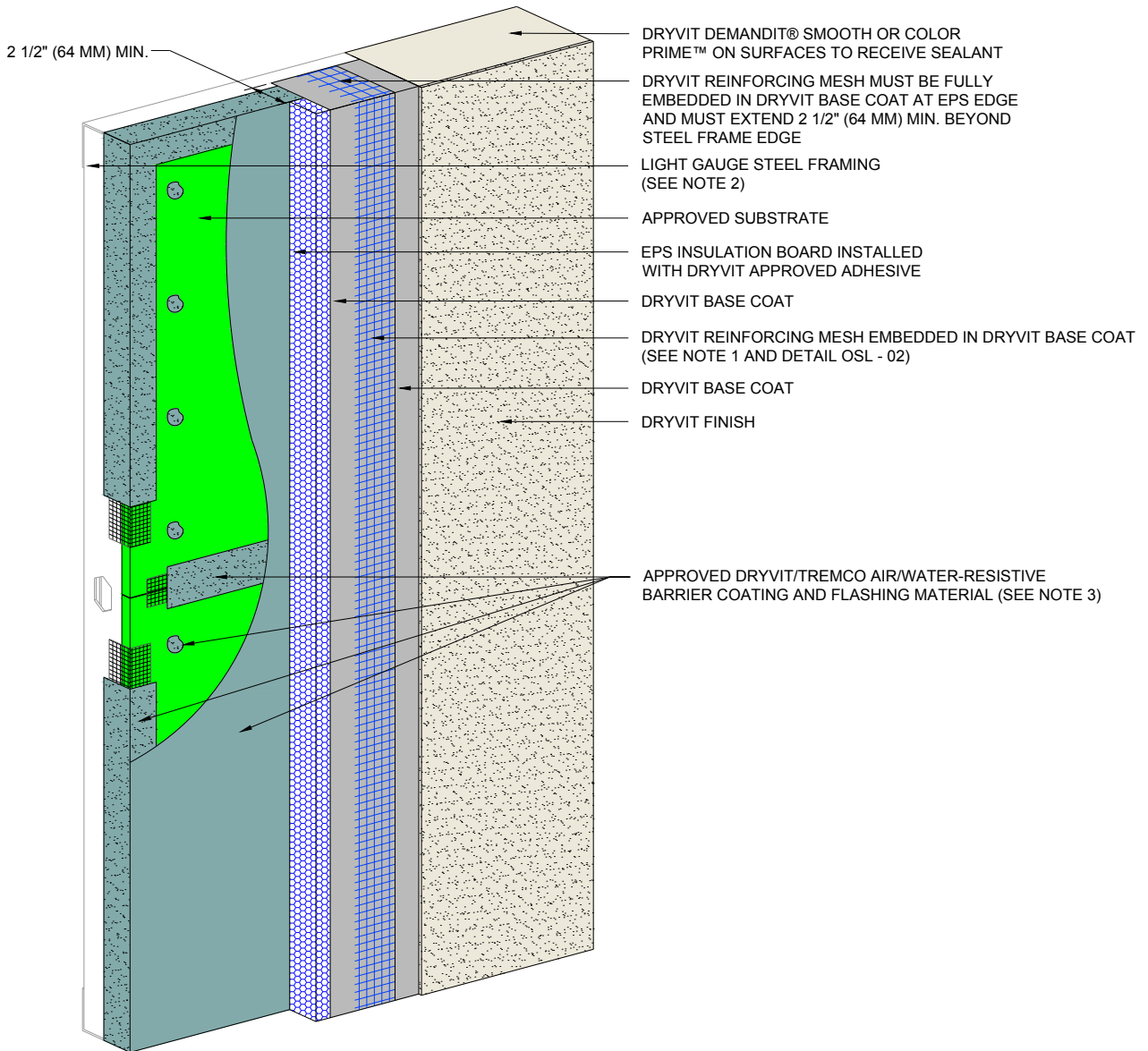
THE LIABILITIES OF DRYVIT SHALL BE AS STATED IN THE DRYVIT STANDARD WARRANTY. CONTACT DRYVIT FOR A FULL AND COMPLETE COPY OF THIS WARRANTY.

Outsulite Panel System Installation Details

*The architecture, engineering, and design of the project using the Dryvit products is the responsibility of the project's design professional. All systems must comply with local building codes and standards. This detail is for general information and guidance only and Dryvit specifically disclaims any liability for the use of this detail and for the architecture, design, engineering or workmanship of any project. The project design professional determines, in its sole discretion, whether this detail or a functionally equivalent detail is best suited for the project. Use of a functionally equivalent detail does not violate Dryvit's warranty. This detail is subject to change without notice. Contact Dryvit to ensure you have the most recent version.*



One Energy Way, West Warwick, RI 02893  
Phone : 800-556-7752



Outsulite Panel System

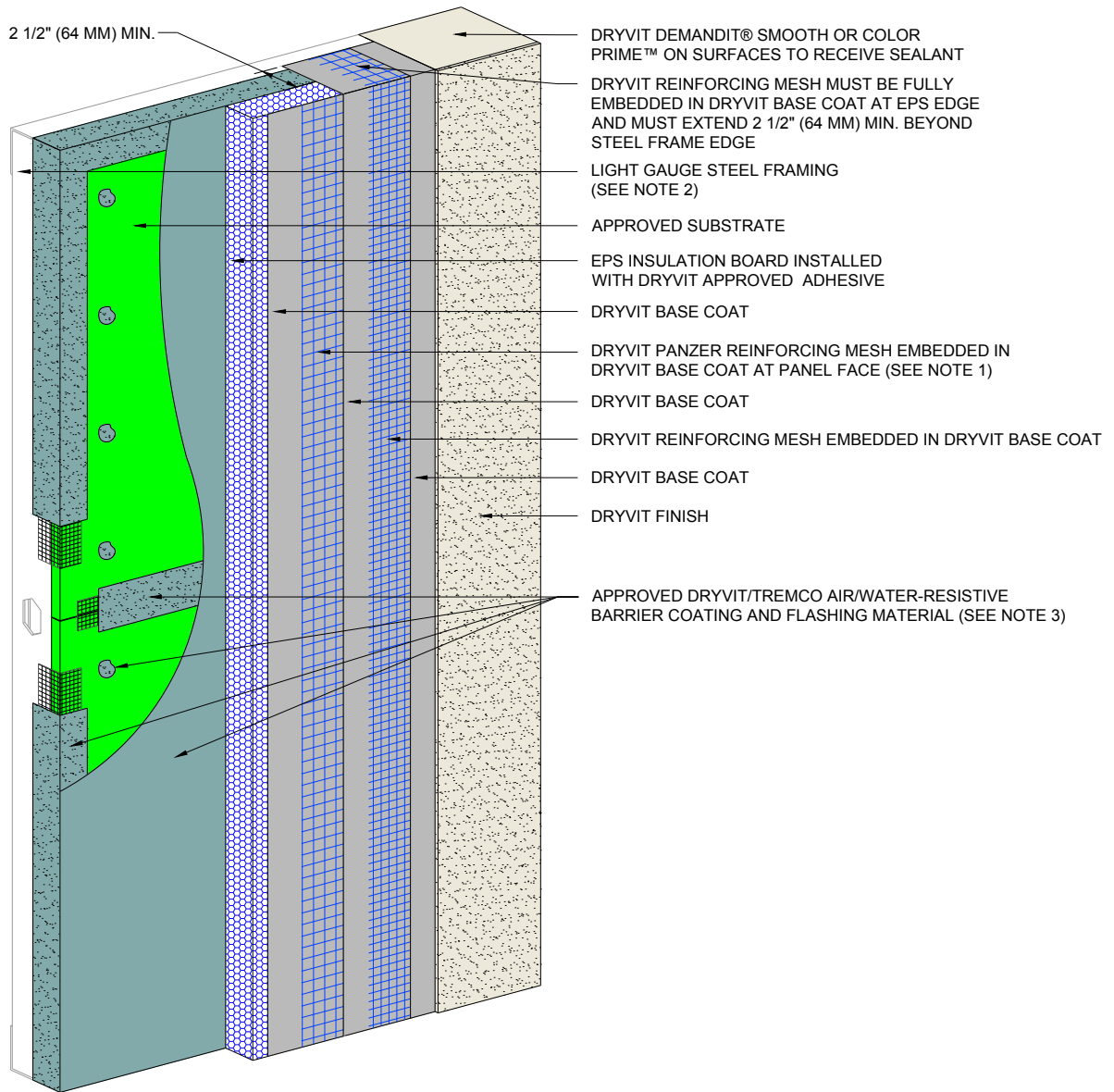
NOTES:

1. Dryvit recommends that ground floor applications and all facades exposed to abnormal stress, high traffic, or deliberate impact have the base coat reinforced with Panzer® Mesh prior to Standard or Standard Plus Mesh. Location of high impact zones should be indicated on contract drawings.
2. Light gauge steel frame shall be designed for specific project loads and conditions to meet local building codes by licensed engineer.
3. Refer to Dryvit publication DS840 for AWRB and flashing application.

*The architecture, engineering, and design of the project using the Dryvit products is the responsibility of the project's design professional. All systems must comply with local building codes and standards. This detail is for general information and guidance only and Dryvit specifically disclaims any liability for the use of this detail and for the architecture, design, engineering or workmanship of any project. The project design professional determines, in its sole discretion, whether this detail or a functionally equivalent detail is best suited for the project. Use of a functionally equivalent detail does not violate Dryvit's warranty. This detail is subject to change without notice. Contact Dryvit to ensure you have the most recent version.*



One Energy Way, West Warwick, RI 02893  
 Phone : 800-556-7752



Outsulite Panel System - High Impact Option

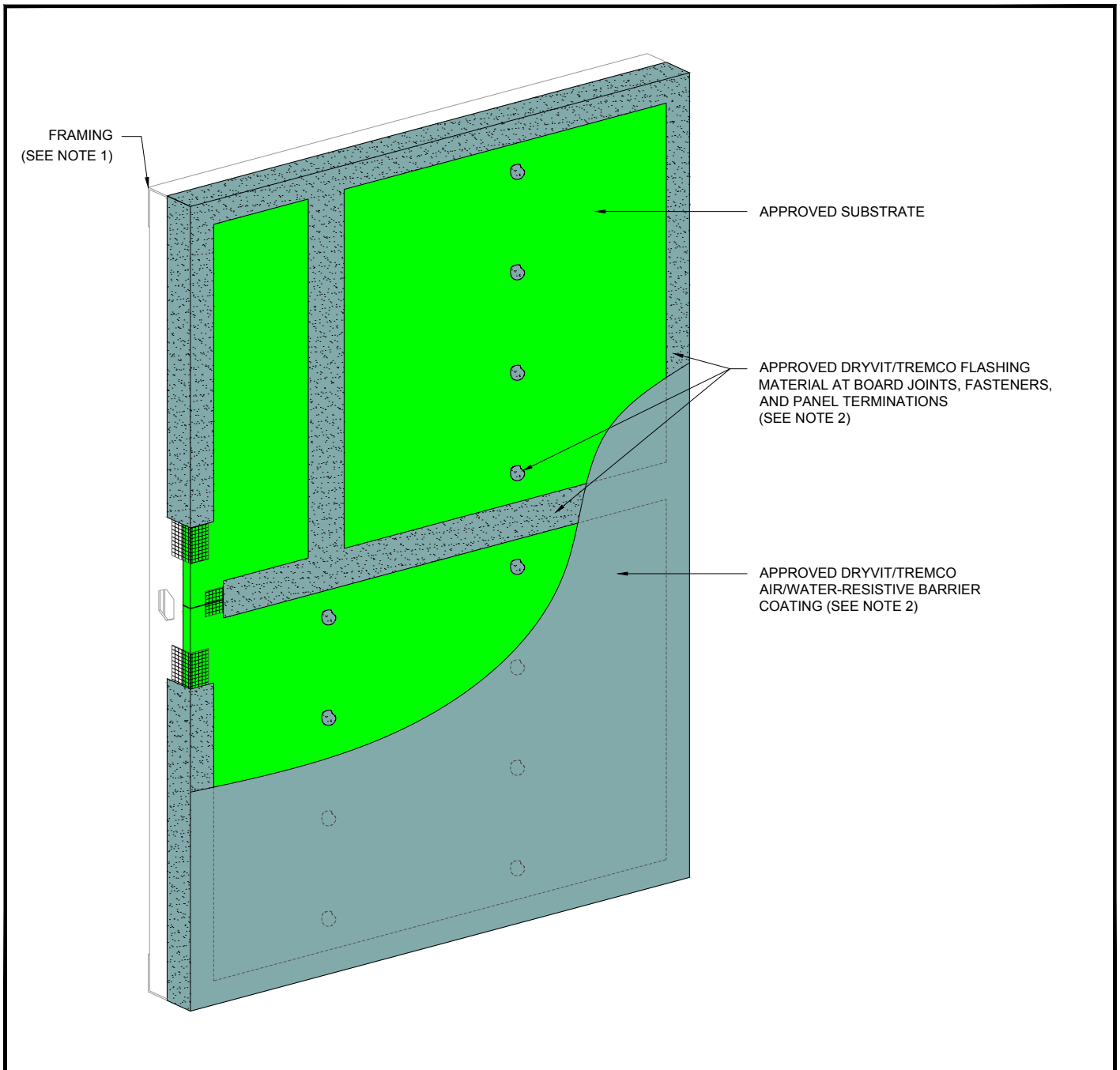
NOTES:

1. Dryvit recommends that ground floor applications and all facades exposed to abnormal stress, high traffic, or deliberate impact have the base coat reinforced with Panzer® Mesh prior to Standard or Standard Plus Mesh. Location of high impact zones should be indicated on contract drawings.
2. Light gauge steel frame shall be designed for specific project loads and conditions to meet local building codes by licensed engineer.
3. Refer to Dryvit publication DS840 for AWRB and flashing application.

*The architecture, engineering, and design of the project using the Dryvit products is the responsibility of the project's design professional. All systems must comply with local building codes and standards. This detail is for general information and guidance only and Dryvit specifically disclaims any liability for the use of this detail and for the architecture, design, engineering or workmanship of any project. The project design professional determines, in its sole discretion, whether this detail or a functionally equivalent detail is best suited for the project. Use of a functionally equivalent detail does not violate Dryvit's warranty. This detail is subject to change without notice. Contact Dryvit to ensure you have the most recent version.*



One Energy Way, West Warwick, RI 02893  
Phone : 800-556-7752

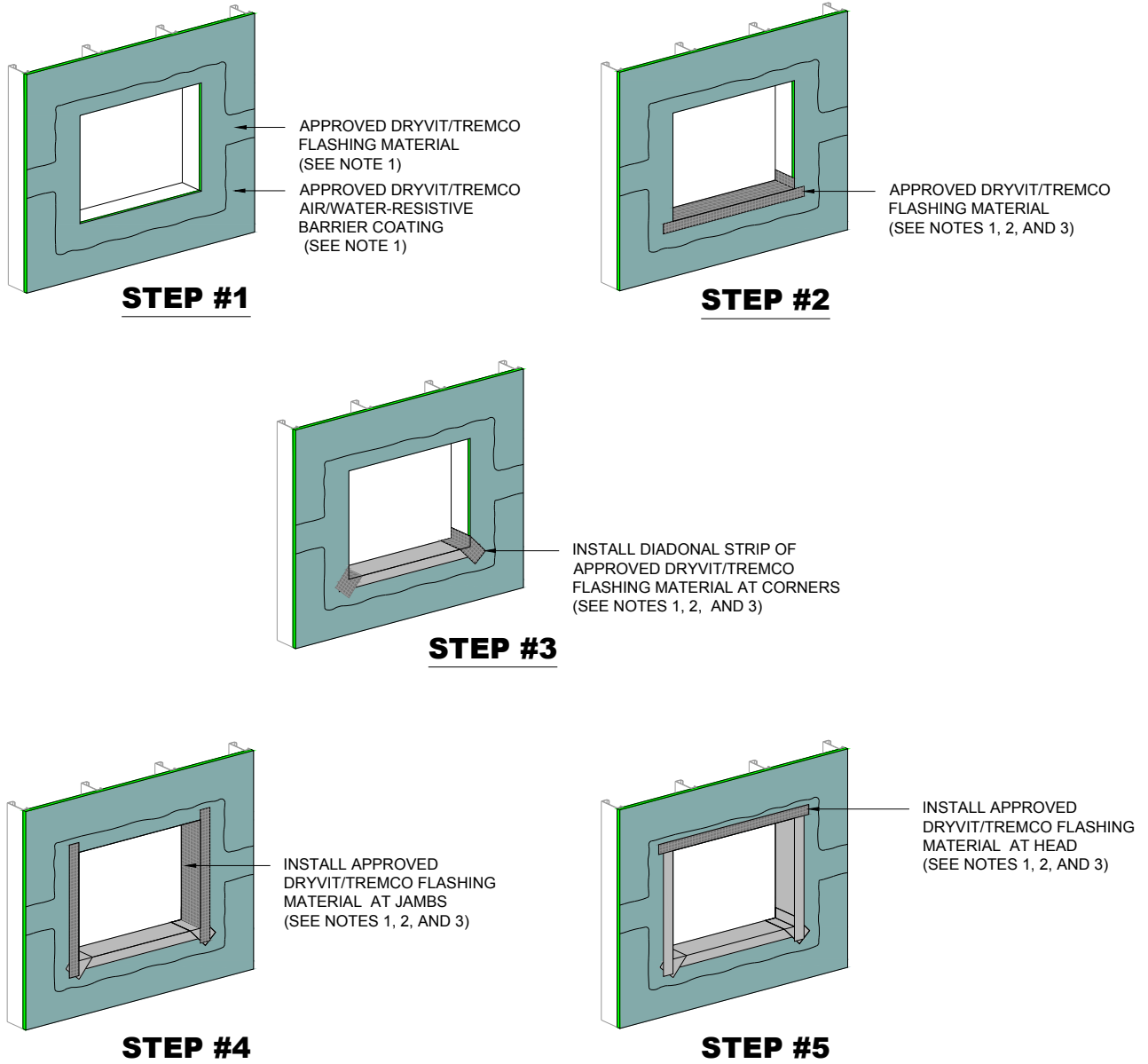


**Board Joint and Fastener Treatment**

**NOTES:**

1. Light gauge steel frame shall be designed for specific project loads and conditions to meet local building codes by licensed engineer.
2. Refer to Dryvit publication DS840 for AWRB and flashing application.

*The architecture, engineering, and design of the project using the Dryvit products is the responsibility of the project's design professional. All systems must comply with local building codes and standards. This detail is for general information and guidance only and Dryvit specifically disclaims any liability for the use of this detail and for the architecture, design, engineering or workmanship of any project. The project design professional determines, in its sole discretion, whether this detail or a functionally equivalent detail is best suited for the project. Use of a functionally equivalent detail does not violate Dryvit's warranty. This detail is subject to change without notice. Contact Dryvit to ensure you have the most recent version.*



Rough Opening Preparation<sup>4</sup>

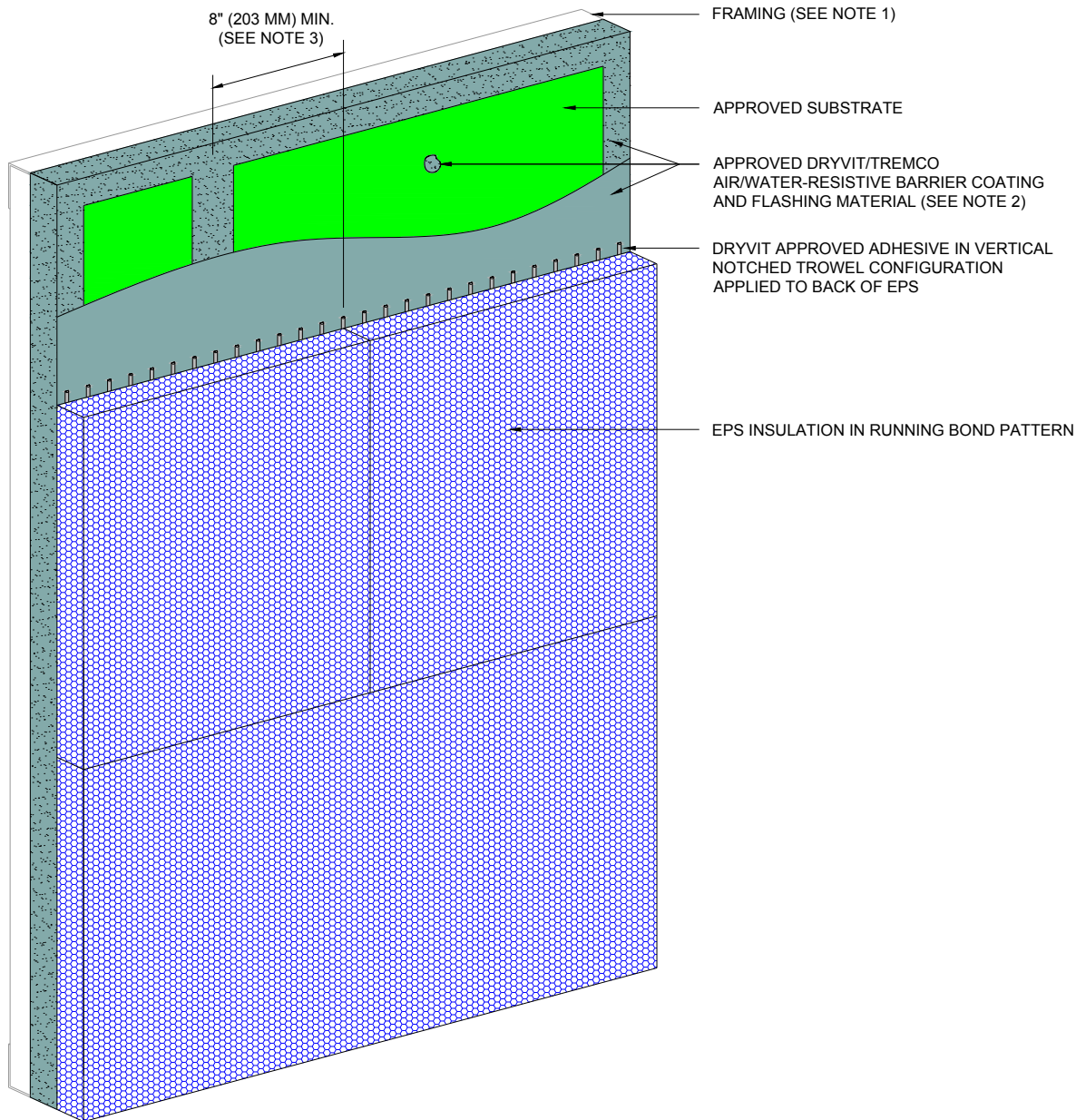
NOTES:

1. Refer to Dryvit publication DS840 for AWRB and flashing application.
2. Approved Dryvit/Tremco flashing material shall extend to interior face of opening.
3. Install window unit and associated flashings per manufacturer's recommendations, code requirements and project documents.
4. Refer to head, sill and jamb details for flashing integration.

*The architecture, engineering, and design of the project using the Dryvit products is the responsibility of the project's design professional. All systems must comply with local building codes and standards. This detail is for general information and guidance only and Dryvit specifically disclaims any liability for the use of this detail and for the architecture, design, engineering or workmanship of any project. The project design professional determines, in its sole discretion, whether this detail or a functionally equivalent detail is best suited for the project. Use of a functionally equivalent detail does not violate Dryvit's warranty. This detail is subject to change without notice. Contact Dryvit to ensure you have the most recent version.*



One Energy Way, West Warwick, RI 02893  
 Phone : 800-556-7752



EPS Board Installation

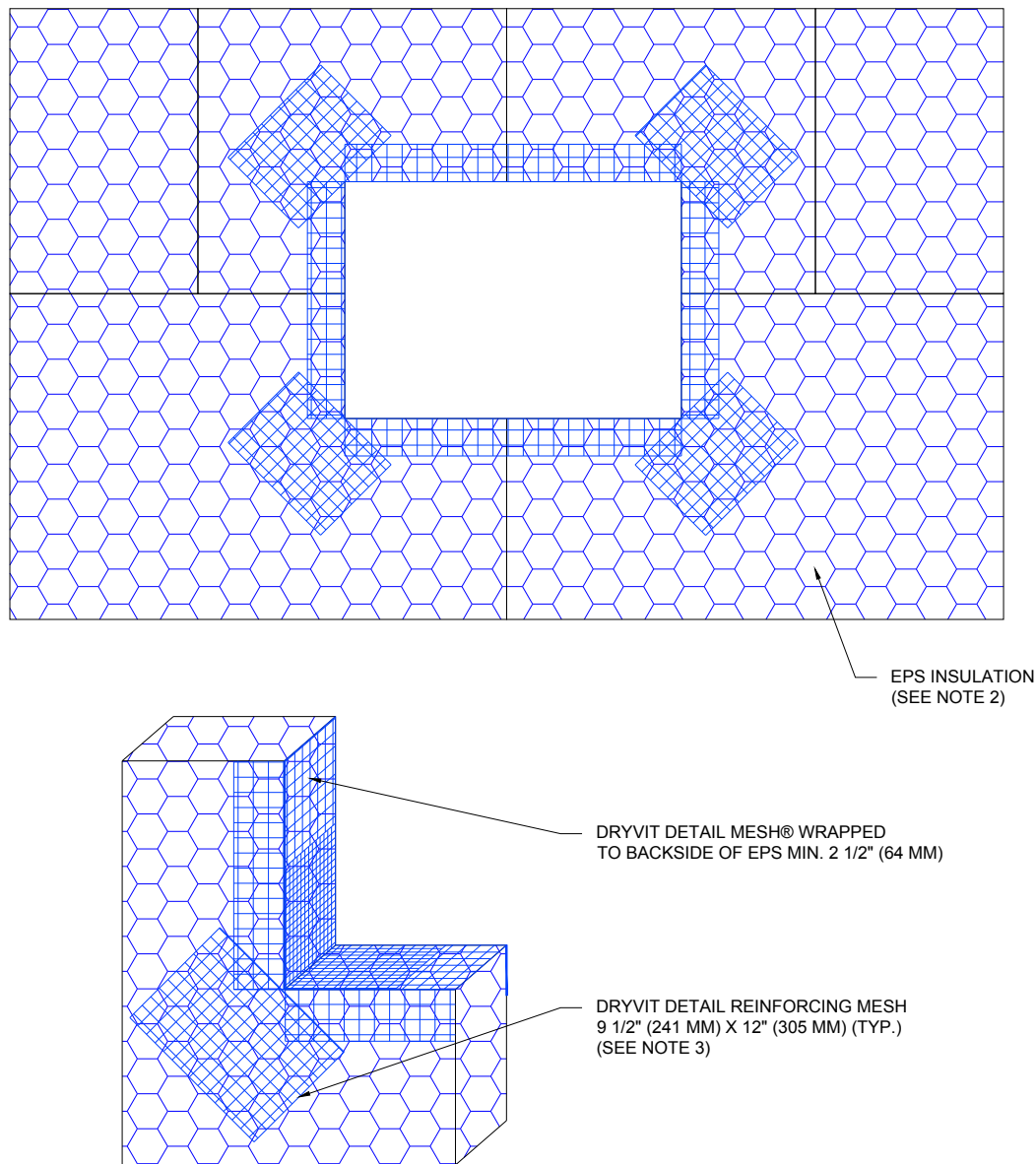
NOTES:

1. Light gauge steel frame shall be designed for specific project loads and conditions to meet local building codes by licensed engineer.
2. Refer to Dryvit publication DS840 for AWRB and flashing application.
3. Offset substrate joints from insulation board joints by 8" (203 mm) minimum, horizontally and vertically.
4. For the base coat and mesh application following this step see OSL - 01 & 02.

*The architecture, engineering, and design of the project using the Dryvit products is the responsibility of the project's design professional. All systems must comply with local building codes and standards. This detail is for general information and guidance only and Dryvit specifically disclaims any liability for the use of this detail and for the architecture, design, engineering or workmanship of any project. The project design professional determines, in its sole discretion, whether this detail or a functionally equivalent detail is best suited for the project. Use of a functionally equivalent detail does not violate Dryvit's warranty. This detail is subject to change without notice. Contact Dryvit to ensure you have the most recent version.*



One Energy Way, West Warwick, RI 02893  
 Phone : 800-556-7752



### EPS Preparation at Wall Penetrations

NOTES:

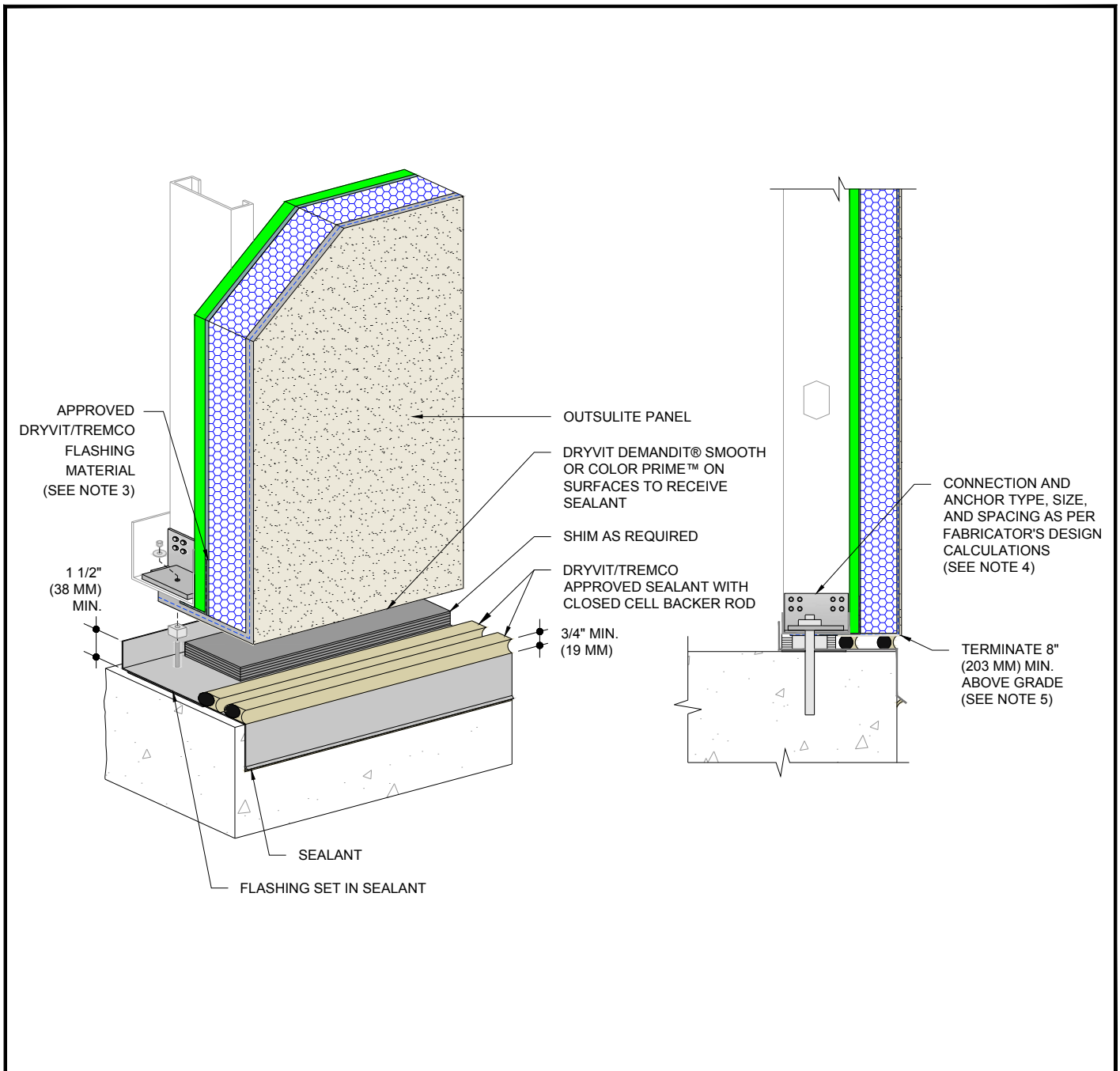
1. Dryvit recommends that ground floor applications and all facades exposed to abnormal stress, high traffic, or deliberate impact have the base coat reinforced with Panzer® Mesh prior to Standard or Standard Plus Mesh. Location of high impact zones should be indicated on contract drawings.
2. Locate insulation boards such that board edges do not align with corners of penetration.
3. Apply a piece of 9 1/2" (241 mm) x 12" (305 mm) Detail Reinforcing Mesh diagonally at each corner.

*The architecture, engineering, and design of the project using the Dryvit products is the responsibility of the project's design professional. All systems must comply with local building codes and standards. This detail is for general information and guidance only and Dryvit specifically disclaims any liability for the use of this detail and for the architecture, design, engineering or workmanship of any project. The project design professional determines, in its sole discretion, whether this detail or a functionally equivalent detail is best suited for the project. Use of a functionally equivalent detail does not violate Dryvit's warranty. This detail is subject to change without notice. Contact Dryvit to ensure you have the most recent version.*



One Energy Way, West Warwick, RI 02893  
Phone : 800-556-7752





Termination at Slab on Grade<sup>4</sup>

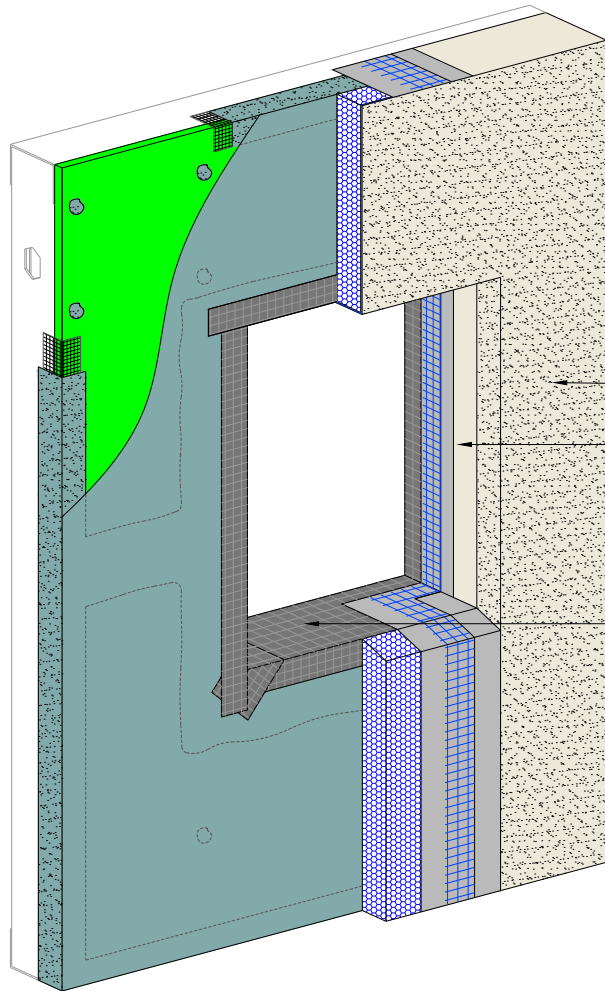
NOTES:

1. Dryvit recommends that ground floor applications and all facades exposed to abnormal stress, high traffic, or deliberate impact have the base coat reinforced with Panzer® Mesh prior to Standard or Standard Plus Mesh. Location of high impact zones should be indicated on contract drawings.
2. Light gauge steel frame shall be designed for specific project loads and conditions to meet local building codes by licensed engineer.
3. Refer to Dryvit publication DS840 for AWRB and flashing application.
4. Panel to slab attachment option or as per approved engineered shop drawings. Refer to Publication DS928 for Outsulite Panel System typical connection details.
5. Termination of the Outsulite Panel System to be 8" (203 mm) minimum above grade.

*The architecture, engineering, and design of the project using the Dryvit products is the responsibility of the project's design professional. All systems must comply with local building codes and standards. This detail is for general information and guidance only and Dryvit specifically disclaims any liability for the use of this detail and for the architecture, design, engineering or workmanship of any project. The project design professional determines, in its sole discretion, whether this detail or a functionally equivalent detail is best suited for the project. Use of a functionally equivalent detail does not violate Dryvit's warranty. This detail is subject to change without notice. Contact Dryvit to ensure you have the most recent version.*



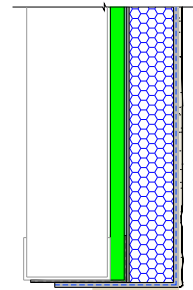
One Energy Way, West Warwick, RI 02893  
 Phone : 800-556-7752



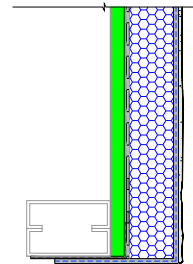
OUTSULITE PANEL (SEE NOTE 2)

DRYVIT DEMANDIT® SMOOTH OR COLOR PRIME™ ON SURFACES TO RECEIVE SEALANT (SEE NOTE 2)

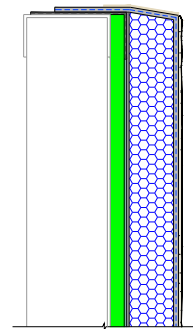
APPROVED DRYTVIT/TREMCO FLASHING MATERIAL (SEE NOTE 3 AND DETAIL OSL - 04)



SECTION A-A  
HEAD



SECTION B-B  
JAMB



SECTION C-C  
SILL

Termination at Openings

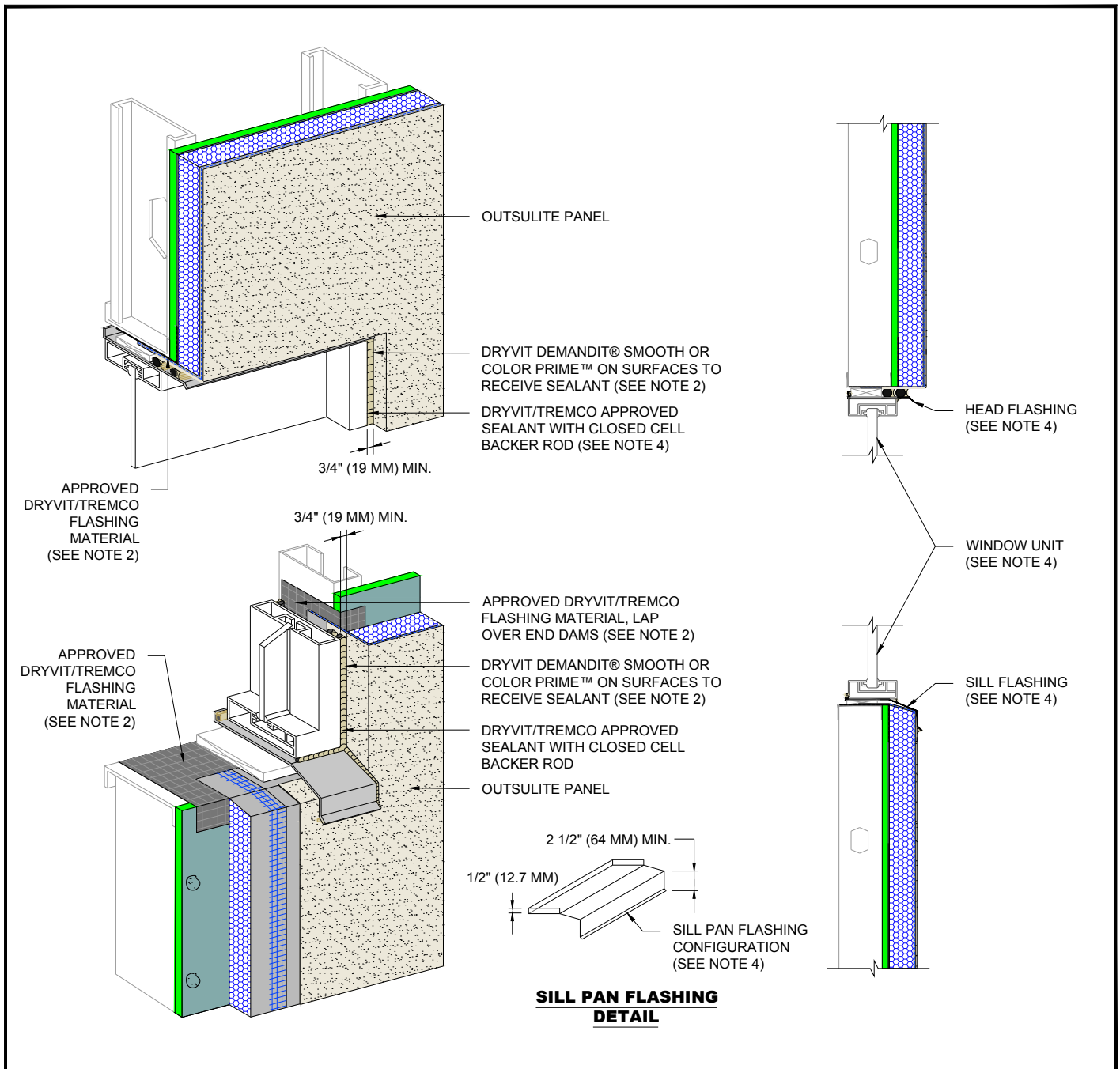
NOTES:

1. Dryvit recommends that ground floor applications and all facades exposed to abnormal stress, high traffic, or deliberate impact have the base coat reinforced with Panzer® Mesh prior to Standard or Standard Plus Mesh. Location of high impact zones should be indicated on contract drawings.
2. Light gauge steel frame shall be designed for specific project loads and conditions to meet local building codes by licensed engineer.
3. Refer to Dryvit publication DS840 for AWRB and flashing application.
4. Coordinate with window shop drawings for termination of finish.

*The architecture, engineering, and design of the project using the Dryvit products is the responsibility of the project's design professional. All systems must comply with local building codes and standards. This detail is for general information and guidance only and Dryvit specifically disclaims any liability for the use of this detail and for the architecture, design, engineering or workmanship of any project. The project design professional determines, in its sole discretion, whether this detail or a functionally equivalent detail is best suited for the project. Use of a functionally equivalent detail does not violate Dryvit's warranty. This detail is subject to change without notice. Contact Dryvit to ensure you have the most recent version.*



One Energy Way, West Warwick, RI 02893  
Phone : 800-556-7752



Head / Sill Flashing Integration

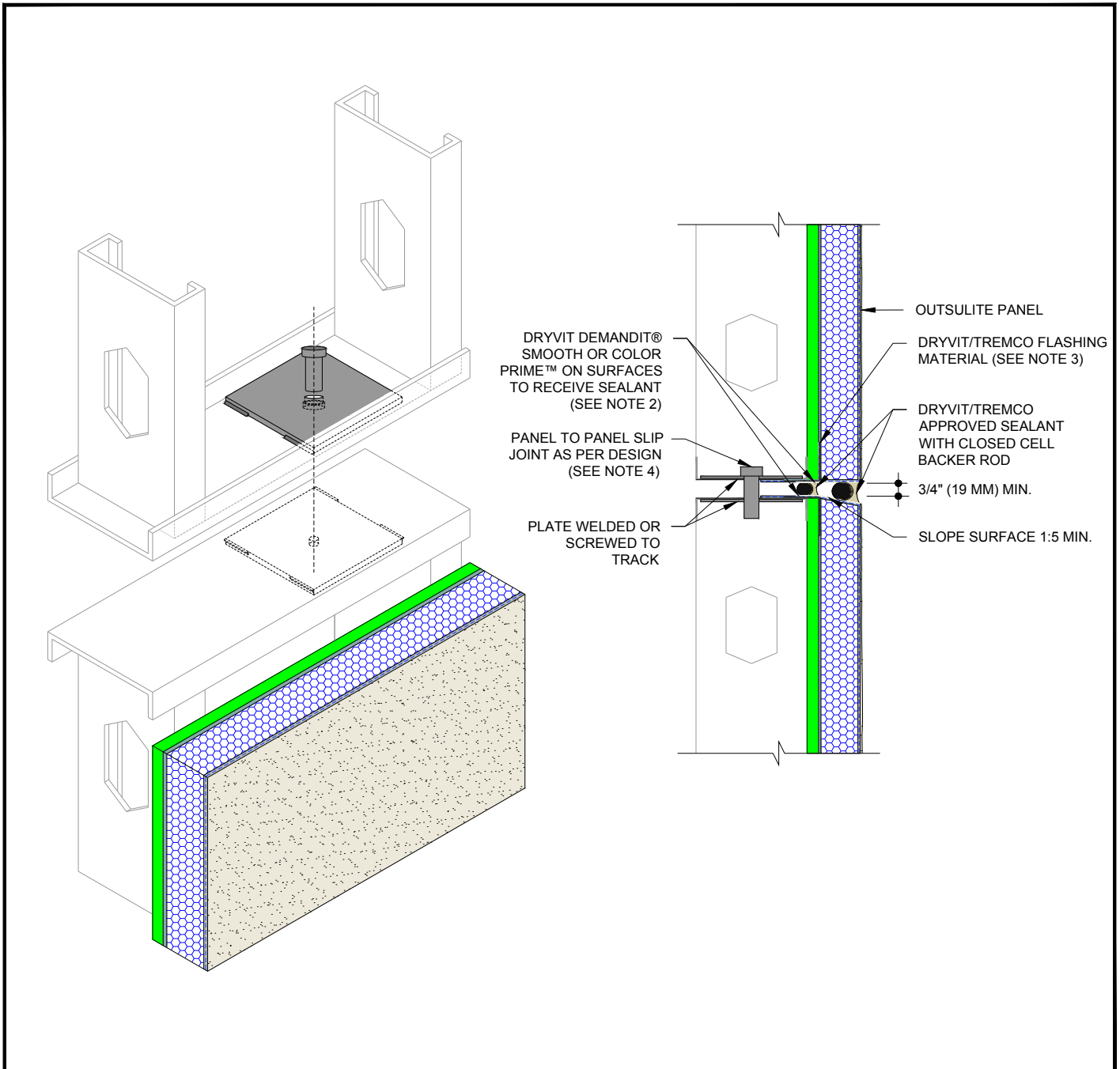
NOTES:

1. Dryvit recommends that ground floor applications and all facades exposed to abnormal stress, high traffic, or deliberate impact have the base coat reinforced with Panzer® Mesh prior to Standard or Standard Plus Mesh. Location of high impact zones should be indicated on contract drawingS.
2. Refer to Dryvit publication DS840 for AWRB and flashing application.
3. Coordinate with window shop drawings for termination of finish.
4. Install window unit and associated flashings per manufacturer's recommendations, code requirements and project documents.

*The architecture, engineering, and design of the project using the Dryvit products is the responsibility of the project's design professional. All systems must comply with local building codes and standards. This detail is for general information and guidance only and Dryvit specifically disclaims any liability for the use of this detail and for the architecture, design, engineering or workmanship of any project. The project design professional determines, in its sole discretion, whether this detail or a functionally equivalent detail is best suited for the project. Use of a functionally equivalent detail does not violate Dryvit's warranty. This detail is subject to change without notice. Contact Dryvit to ensure you have the most recent version.*



One Energy Way, West Warwick, RI 02893  
Phone : 800-556-7752



Horizontal Panel Connection

NOTES:

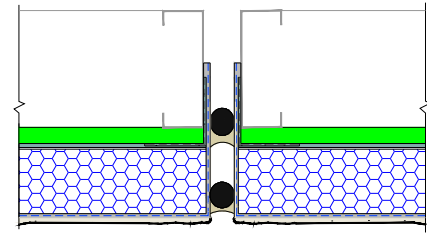
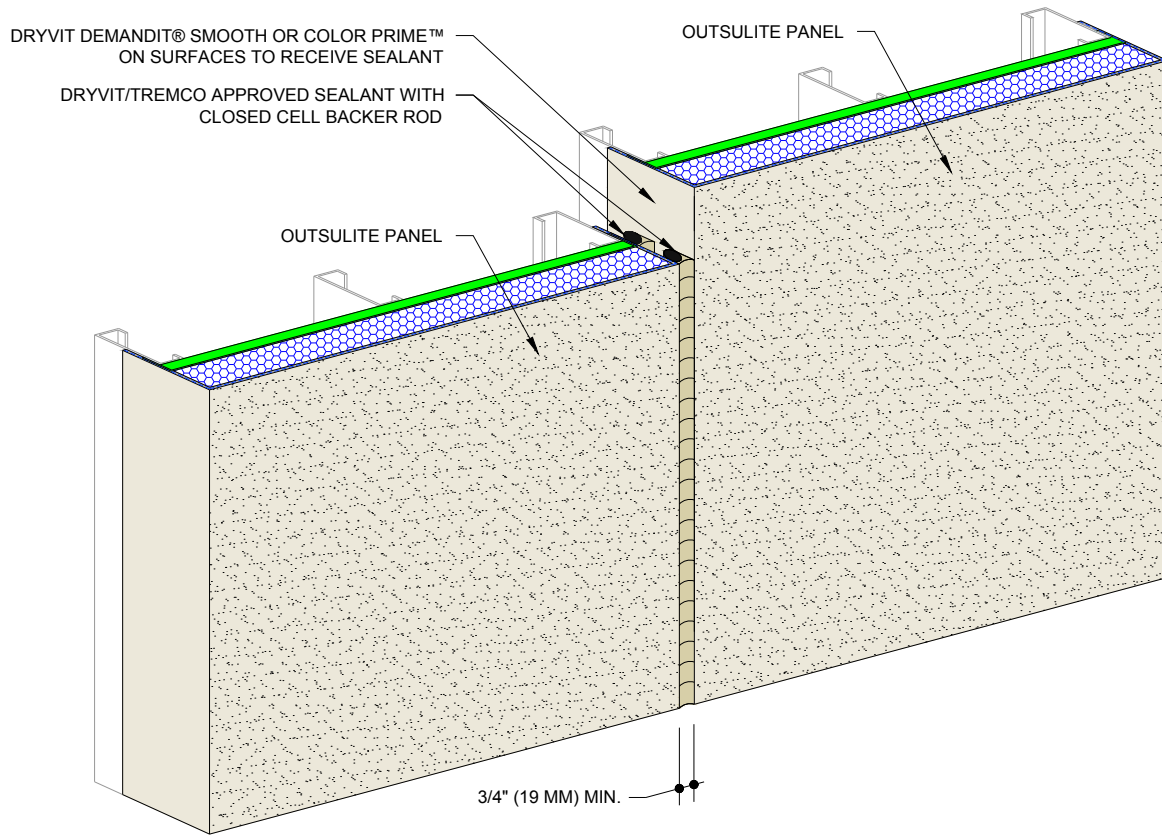
1. Dryvit recommends that ground floor applications and all facades exposed to abnormal stress, high traffic, or deliberate impact have the base coat reinforced with Panzer® Mesh prior to Standard or Standard Plus Mesh. Location of high impact zones should be indicated on contract drawings.
2. Light gauge steel frame shall be designed for specific project loads and conditions to meet local building codes by licensed engineer.
3. Refer to Dryvit publication DS840 for AWRB and flashing application.
4. Panel joint locations as per approved shop drawings.

*The architecture, engineering, and design of the project using the Dryvit products is the responsibility of the project's design professional. All systems must comply with local building codes and standards. This detail is for general information and guidance only and Dryvit specifically disclaims any liability for the use of this detail and for the architecture, design, engineering or workmanship of any project. The project design professional determines, in its sole discretion, whether this detail or a functionally equivalent detail is best suited for the project. Use of a functionally equivalent detail does not violate Dryvit's warranty. This detail is subject to change without notice. Contact Dryvit to ensure you have the most recent version.*



One Energy Way, West Warwick, RI 02893  
Phone : 800-556-7752





**Vertical Panel Joint**

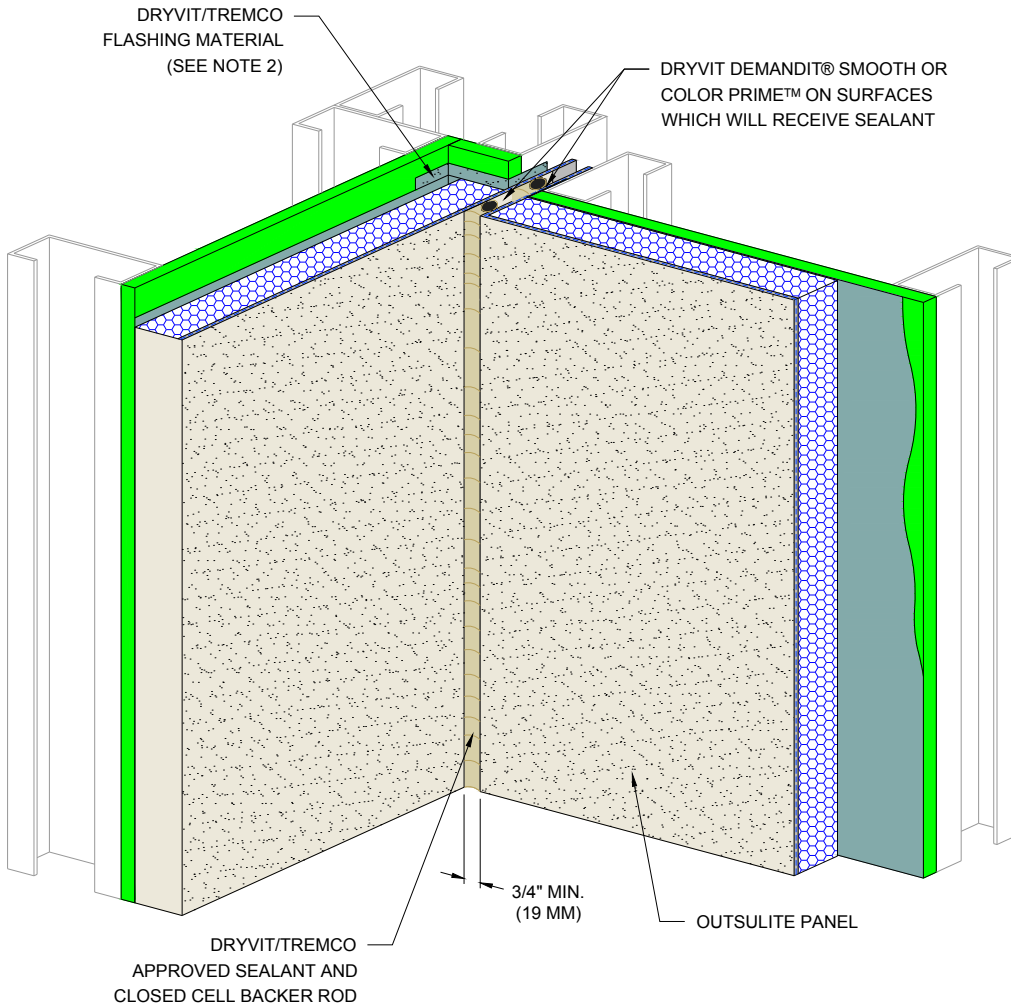
**NOTES:**

1. Dryvit recommends that ground floor applications and all facades exposed to abnormal stress, high traffic, or deliberate impact have the base coat reinforced with Panzer® Mesh prior to Standard or Standard Plus Mesh. Location of high impact zones should be indicated on contract drawings.
2. Light gauge steel frame shall be designed for specific project loads and conditions to meet local building codes by licensed engineer.
3. Refer to Dryvit publication DS840 for AWRB and flashing application.
4. Panel joint locations as per approved shop drawings.

*The architecture, engineering, and design of the project using the Dryvit products is the responsibility of the project's design professional. All systems must comply with local building codes and standards. This detail is for general information and guidance only and Dryvit specifically disclaims any liability for the use of this detail and for the architecture, design, engineering or workmanship of any project. The project design professional determines, in its sole discretion, whether this detail or a functionally equivalent detail is best suited for the project. Use of a functionally equivalent detail does not violate Dryvit's warranty. This detail is subject to change without notice. Contact Dryvit to ensure you have the most recent version.*



One Energy Way, West Warwick, RI 02893  
Phone : 800-556-7752



**Inside Corner Joint**

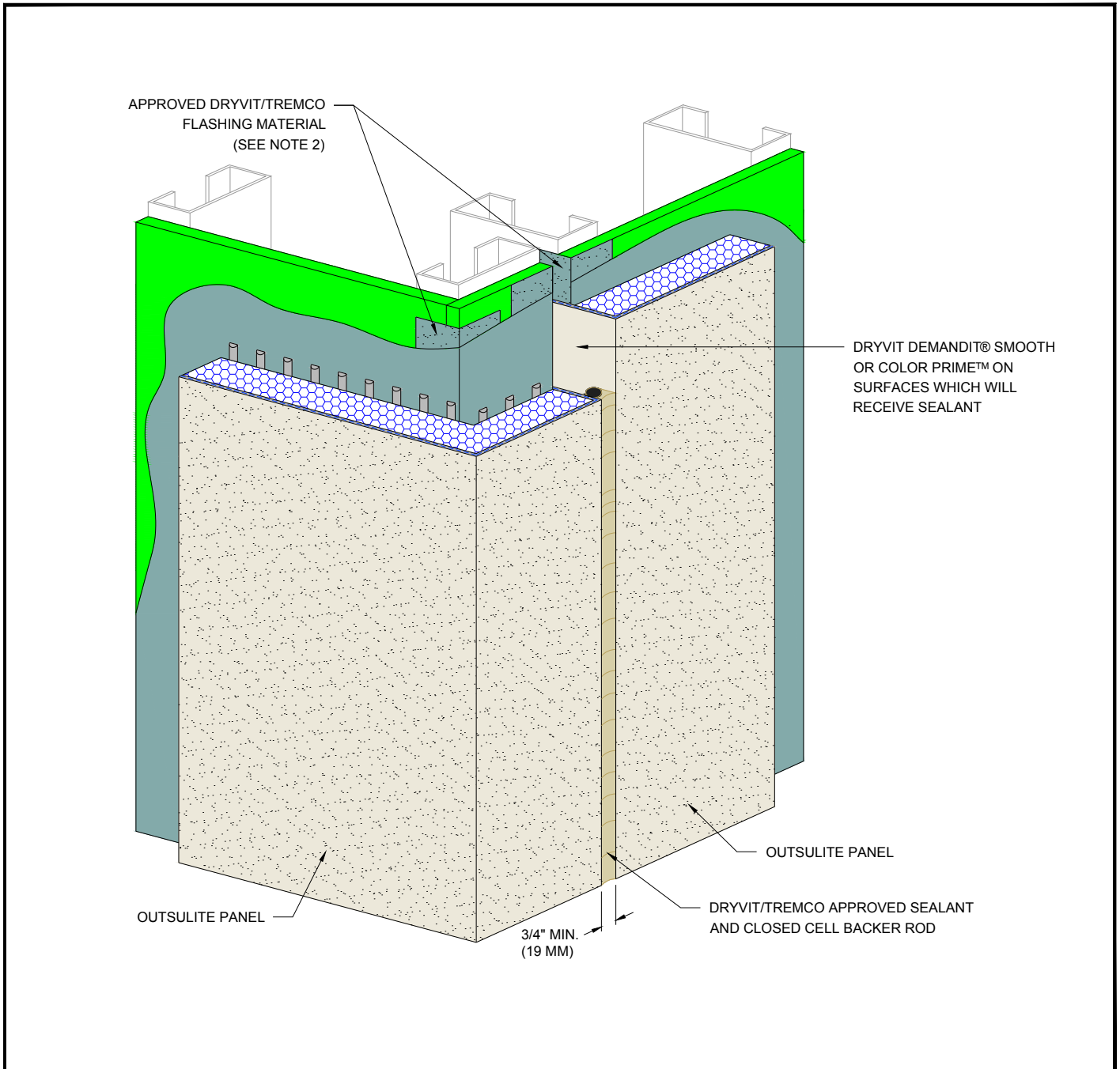
**NOTES:**

1. Dryvit recommends that ground floor applications and all facades exposed to abnormal stress, high traffic, or deliberate impact have the base coat reinforced with Panzer® Mesh prior to Standard or Standard Plus Mesh. Location of high impact zones should be indicated on contract drawings.
2. Light gauge steel frame shall be designed for specific project loads and conditions to meet local building codes by licensed engineer.
3. Refer to Dryvit publication DS840 for AWRB and flashing application.
4. Panel joint locations as per approved shop drawings.

*The architecture, engineering, and design of the project using the Dryvit products is the responsibility of the project's design professional. All systems must comply with local building codes and standards. This detail is for general information and guidance only and Dryvit specifically disclaims any liability for the use of this detail and for the architecture, design, engineering or workmanship of any project. The project design professional determines, in its sole discretion, whether this detail or a functionally equivalent detail is best suited for the project. Use of a functionally equivalent detail does not violate Dryvit's warranty. This detail is subject to change without notice. Contact Dryvit to ensure you have the most recent version.*



One Energy Way, West Warwick, RI 02893  
 Phone : 800-556-7752



**Outside Corner Joint**

**NOTES:**

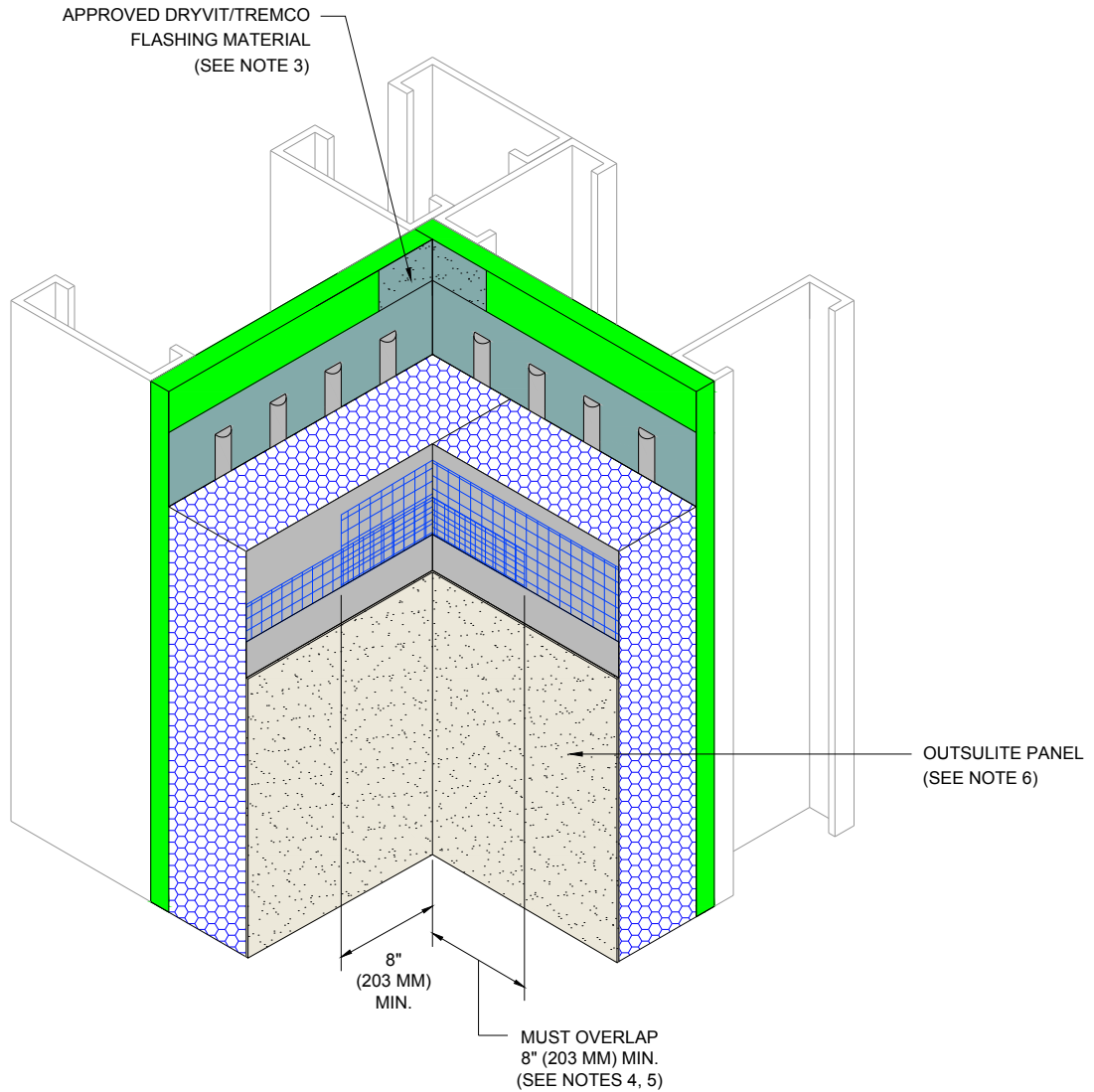
1. Dryvit recommends that ground floor applications and all facades exposed to abnormal stress, high traffic, or deliberate impact have the base coat reinforced with Panzer® Mesh prior to Standard or Standard Plus Mesh. Location of high impact zones should be indicated on contract drawings.
2. Light gauge steel frame shall be designed for specific project loads and conditions to meet local building codes by licensed engineer.
3. Refer to Dryvit publication DS840 for AWRB and flashing application.
4. Panel joint locations as per approved shop drawings.

*The architecture, engineering, and design of the project using the Dryvit products is the responsibility of the project's design professional. All systems must comply with local building codes and standards. This detail is for general information and guidance only and Dryvit specifically disclaims any liability for the use of this detail and for the architecture, design, engineering or workmanship of any project. The project design professional determines, in its sole discretion, whether this detail or a functionally equivalent detail is best suited for the project. Use of a functionally equivalent detail does not violate Dryvit's warranty. This detail is subject to change without notice. Contact Dryvit to ensure you have the most recent version.*



One Energy Way, West Warwick, RI 02893  
 Phone : 800-556-7752





**Inside Corner Panel**

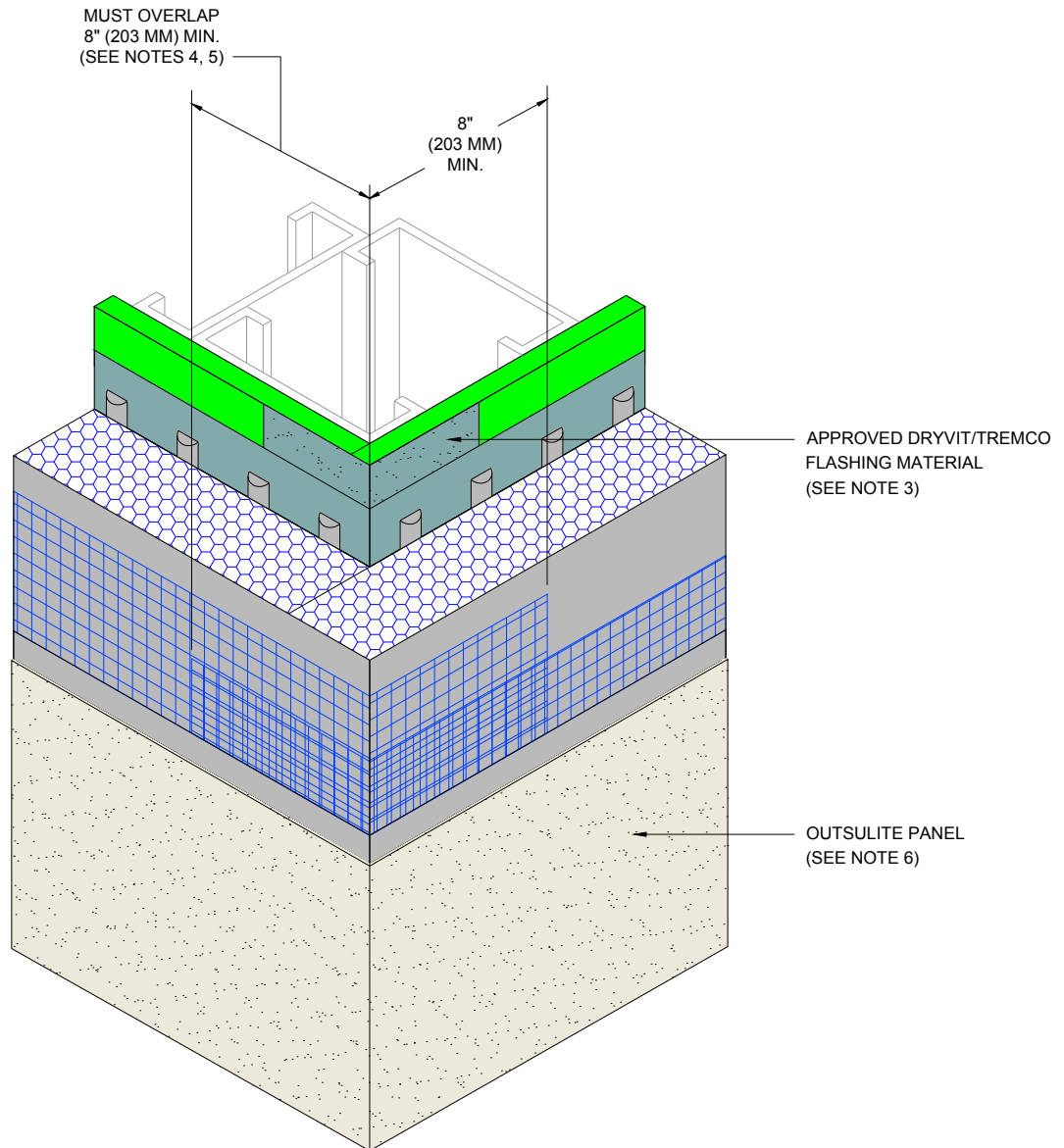
**NOTES:**

1. Dryvit recommends that ground floor applications and all facades exposed to abnormal stress, high traffic, or deliberate impact have the base coat reinforced with Panzer® Mesh prior to Standard or Standard Plus Mesh. Location of high impact zones should be indicated on contract drawings.
2. Light gauge steel frame shall be designed for specific project loads and conditions to meet local building codes by licensed engineer.
3. Refer to Dryvit publication DS840 for AWRB and flashing application.
4. Double wrap corners with reinforcing mesh.
5. Do not lap reinforcing mesh within 8" (203 mm) of a corner.
6. Outside insulation board edges shall be offset.

*The architecture, engineering, and design of the project using the Dryvit products is the responsibility of the project's design professional. All systems must comply with local building codes and standards. This detail is for general information and guidance only and Dryvit specifically disclaims any liability for the use of this detail and for the architecture, design, engineering or workmanship of any project. The project design professional determines, in its sole discretion, whether this detail or a functionally equivalent detail is best suited for the project. Use of a functionally equivalent detail does not violate Dryvit's warranty. This detail is subject to change without notice. Contact Dryvit to ensure you have the most recent version.*



One Energy Way, West Warwick, RI 02893  
 Phone : 800-556-7752



Outside Corner Panel

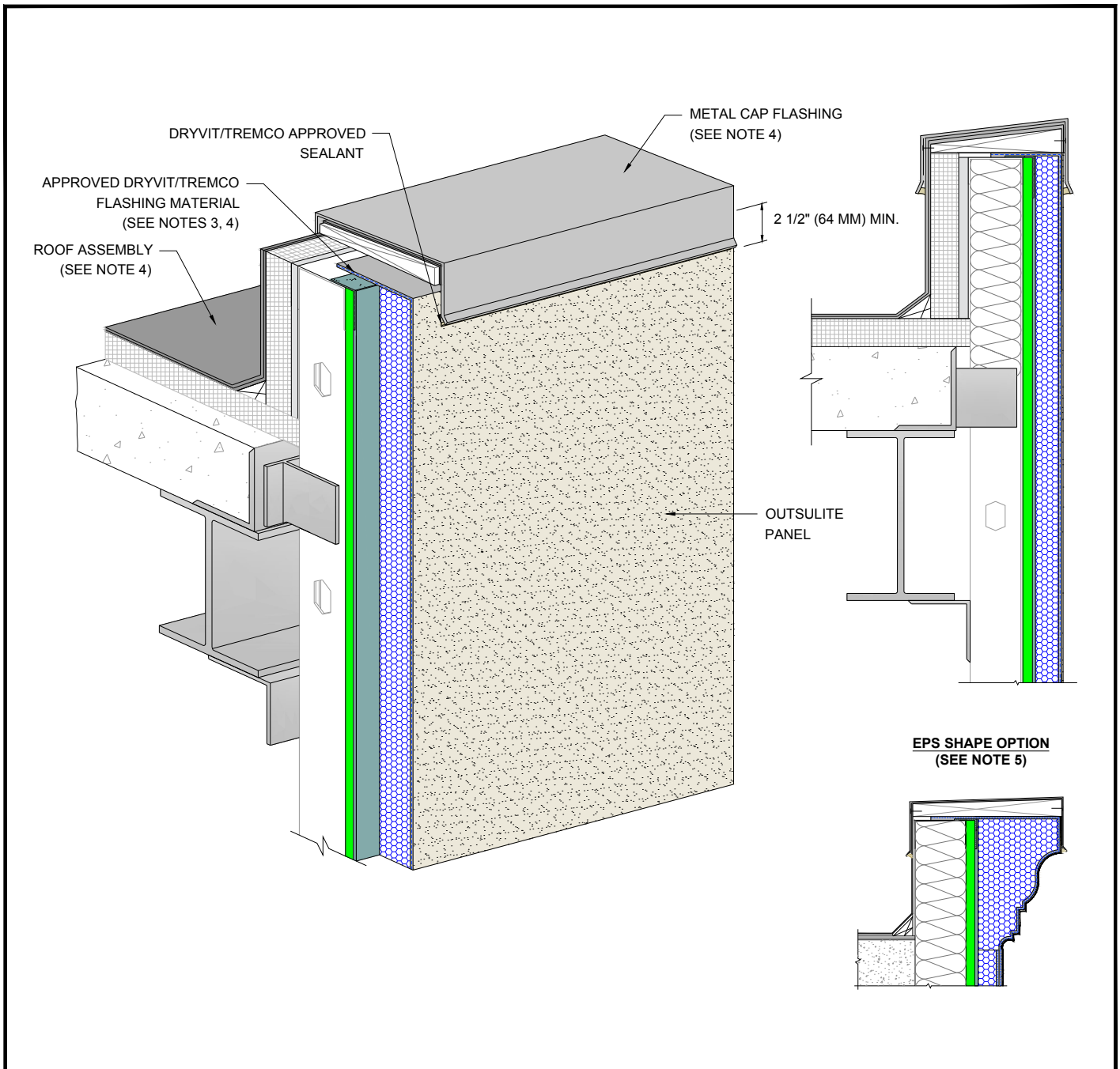
NOTES:

1. Dryvit recommends that ground floor applications and all facades exposed to abnormal stress, high traffic, or deliberate impact have the base coat reinforced with Panzer® Mesh prior to Standard or Standard Plus Mesh. Location of high impact zones should be indicated on contract drawings.
2. Light gauge steel frame shall be designed for specific project loads and conditions to meet local building codes by licensed engineer.
3. Refer to Dryvit publication DS840 for AWRB and flashing application.
4. Double wrap outside corners with reinforcing mesh or use Corner Mesh.
5. Do not lap reinforcing mesh within 8" (203 mm) of a corner.
6. Outside insulation board edges shall be offset.

*The architecture, engineering, and design of the project using the Dryvit products is the responsibility of the project's design professional. All systems must comply with local building codes and standards. This detail is for general information and guidance only and Dryvit specifically disclaims any liability for the use of this detail and for the architecture, design, engineering or workmanship of any project. The project design professional determines, in its sole discretion, whether this detail or a functionally equivalent detail is best suited for the project. Use of a functionally equivalent detail does not violate Dryvit's warranty. This detail is subject to change without notice. Contact Dryvit to ensure you have the most recent version.*



One Energy Way, West Warwick, RI 02893  
 Phone : 800-556-7752



Parapet Panel - Metal Coping

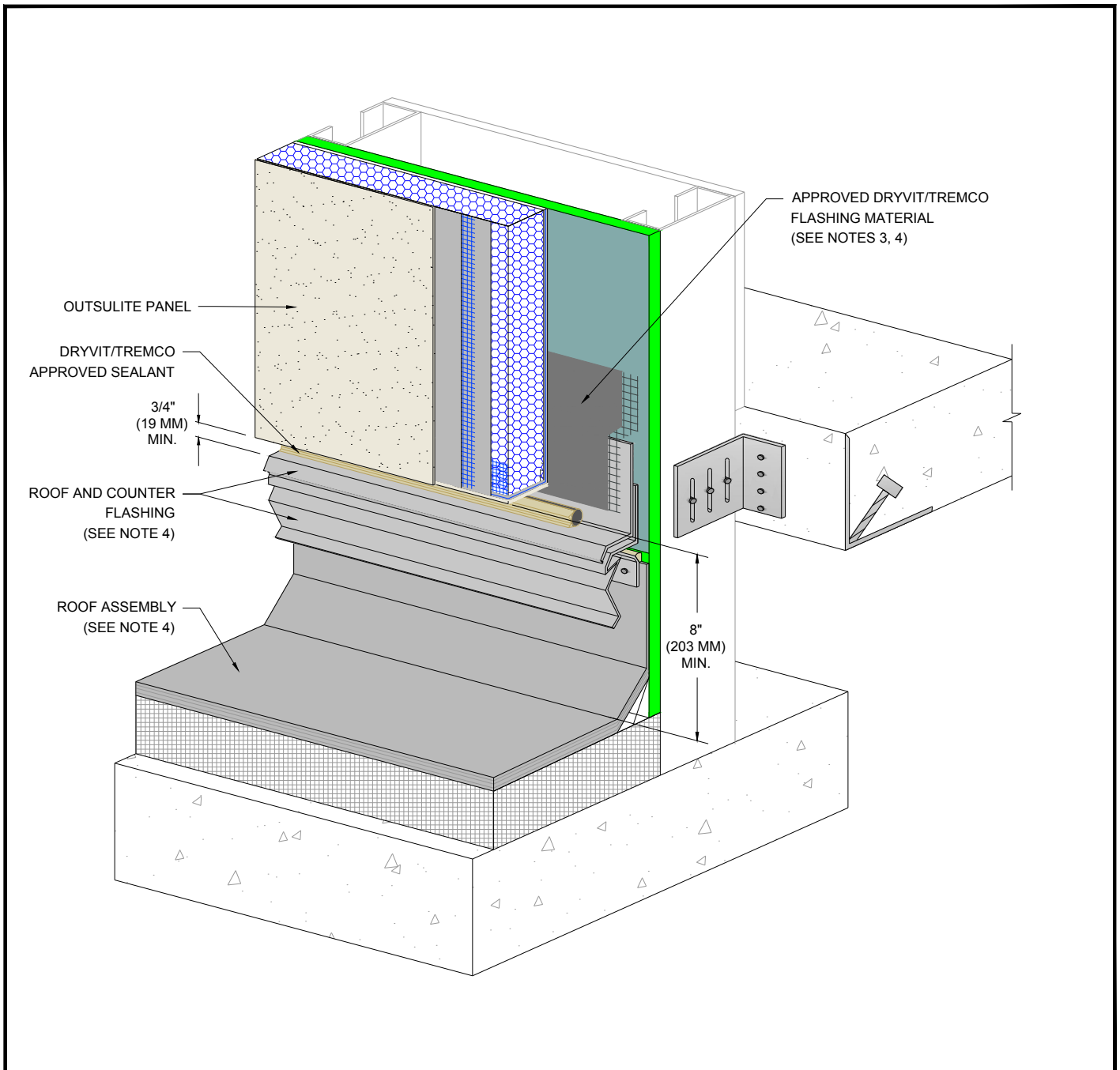
NOTES:

1. Dryvit recommends that ground floor applications and all facades exposed to abnormal stress, high traffic, or deliberate impact have the base coat reinforced with Panzer® Mesh prior to Standard or Standard Plus Mesh. Location of high impact zones should be indicated on contract drawings.
2. Light gauge steel frame shall be designed for specific project loads and conditions to meet local building codes by licensed engineer.
3. Refer to Dryvit publication DS840 for AWRB and flashing application.
4. Roof assembly, sheathing and cap flashing are installed in the field and not components of the panel system.
5. Maximum thickness of EPS built out shapes shall not exceed 13" (330 mm) at any point measured from the substrate. EPS thickness is dictated by local code authority and applicable testing.

*The architecture, engineering, and design of the project using the Dryvit products is the responsibility of the project's design professional. All systems must comply with local building codes and standards. This detail is for general information and guidance only and Dryvit specifically disclaims any liability for the use of this detail and for the architecture, design, engineering or workmanship of any project. The project design professional determines, in its sole discretion, whether this detail or a functionally equivalent detail is best suited for the project. Use of a functionally equivalent detail does not violate Dryvit's warranty. This detail is subject to change without notice. Contact Dryvit to ensure you have the most recent version.*



One Energy Way, West Warwick, RI 02893  
 Phone : 800-556-7752



**Termination at Roof**

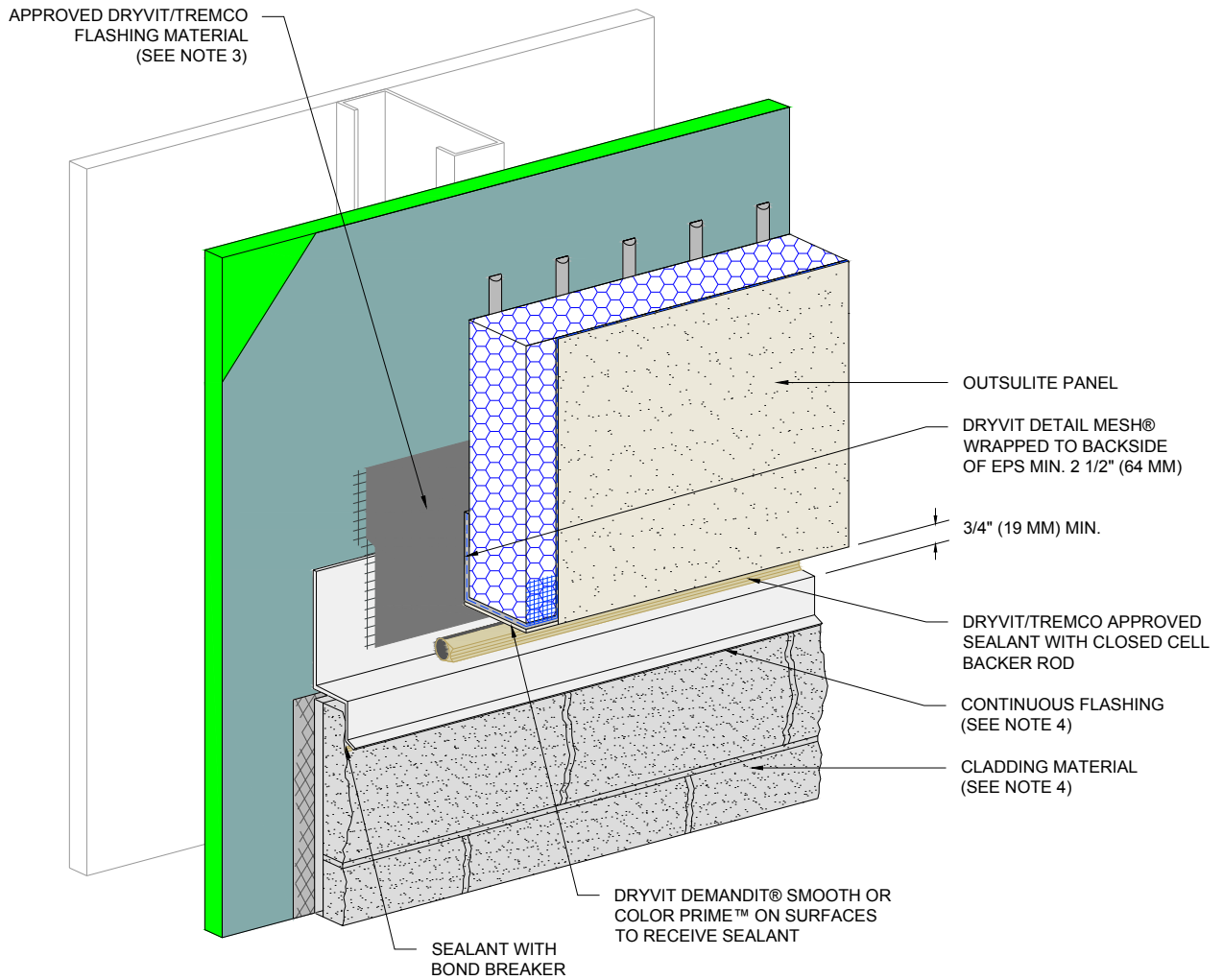
**NOTES:**

1. Dryvit recommends that ground floor applications and all facades exposed to abnormal stress, high traffic, or deliberate impact have the base coat reinforced with Panzer® Mesh prior to Standard or Standard Plus Mesh. Location of high impact zones should be indicated on contract drawings.
2. Light gauge steel frame shall be designed for specific project loads and conditions to meet local building codes by licensed engineer.
3. Refer to Dryvit publication DS840 for AWRB and flashing application.
4. Roof assembly, sheathing and cap flashing are installed in the field and not components of the panel system.

*The architecture, engineering, and design of the project using the Dryvit products is the responsibility of the project's design professional. All systems must comply with local building codes and standards. This detail is for general information and guidance only and Dryvit specifically disclaims any liability for the use of this detail and for the architecture, design, engineering or workmanship of any project. The project design professional determines, in its sole discretion, whether this detail or a functionally equivalent detail is best suited for the project. Use of a functionally equivalent detail does not violate Dryvit's warranty. This detail is subject to change without notice. Contact Dryvit to ensure you have the most recent version.*



One Energy Way, West Warwick, RI 02893  
 Phone : 800-556-7752



Termination at Other Cladding

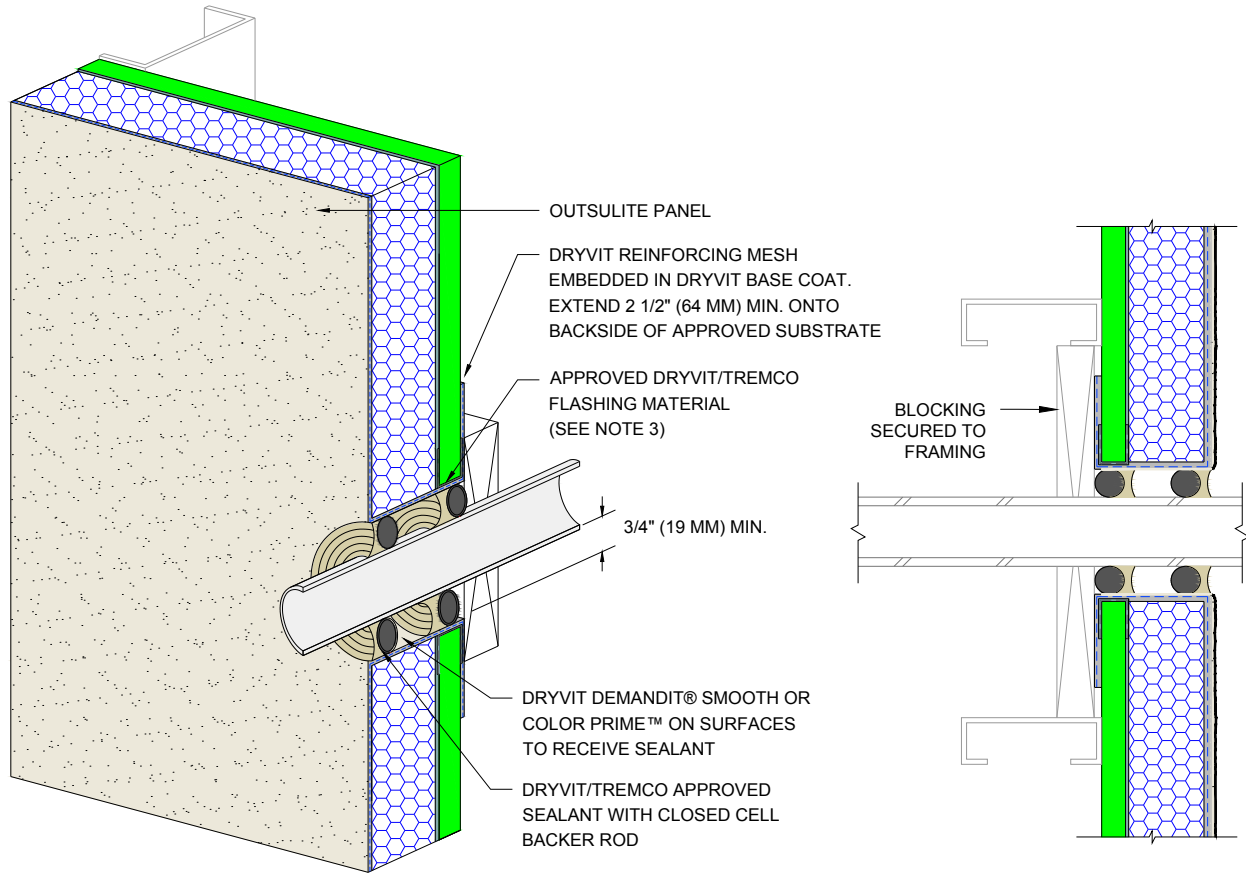
NOTES:

1. Dryvit recommends that ground floor applications and all facades exposed to abnormal stress, high traffic, or deliberate impact have the base coat reinforced with Panzer® Mesh prior to Standard or Standard Plus Mesh. Location of high impact zones should be indicated on contract drawings.
2. Light gauge steel frame shall be designed for specific project loads and conditions to meet local building codes by licensed engineer.
3. Refer to Dryvit publication DS840 for AWRB and flashing application.
4. Flashing and other cladding materials per shop drawings.

*The architecture, engineering, and design of the project using the Dryvit products is the responsibility of the project's design professional. All systems must comply with local building codes and standards. This detail is for general information and guidance only and Dryvit specifically disclaims any liability for the use of this detail and for the architecture, design, engineering or workmanship of any project. The project design professional determines, in its sole discretion, whether this detail or a functionally equivalent detail is best suited for the project. Use of a functionally equivalent detail does not violate Dryvit's warranty. This detail is subject to change without notice. Contact Dryvit to ensure you have the most recent version.*



One Energy Way, West Warwick, RI 02893  
 Phone : 800-556-7752

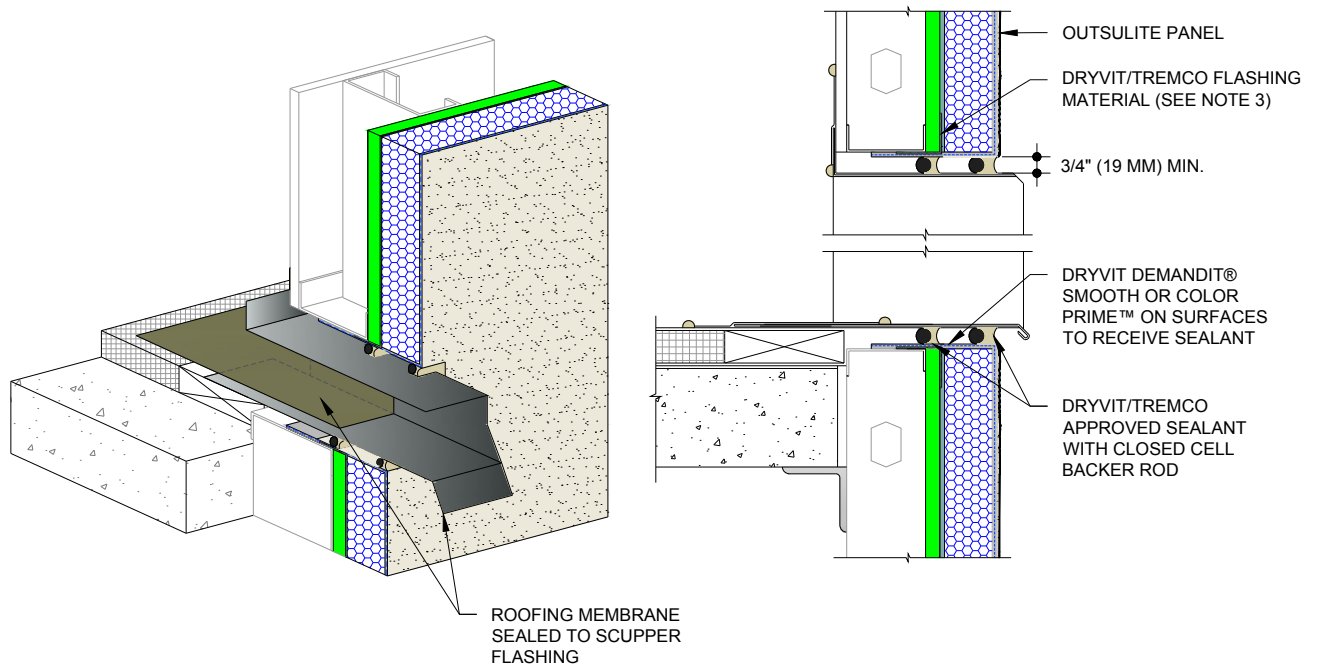


Penetrations

NOTES:

1. Dryvit recommends that ground floor applications and all facades exposed to abnormal stress, high traffic, or deliberate impact have the base coat reinforced with Panzer® Mesh prior to Standard or Standard Plus Mesh. Location of high impact zones should be indicated on contract drawings.
2. Light gauge steel frame shall be designed for specific project loads and conditions to meet local building codes by licensed engineer.
3. Refer to Dryvit publication DS840 for AWRB and flashing application.

*The architecture, engineering, and design of the project using the Dryvit products is the responsibility of the project's design professional. All systems must comply with local building codes and standards. This detail is for general information and guidance only and Dryvit specifically disclaims any liability for the use of this detail and for the architecture, design, engineering or workmanship of any project. The project design professional determines, in its sole discretion, whether this detail or a functionally equivalent detail is best suited for the project. Use of a functionally equivalent detail does not violate Dryvit's warranty. This detail is subject to change without notice. Contact Dryvit to ensure you have the most recent version.*



### Scupper Termination

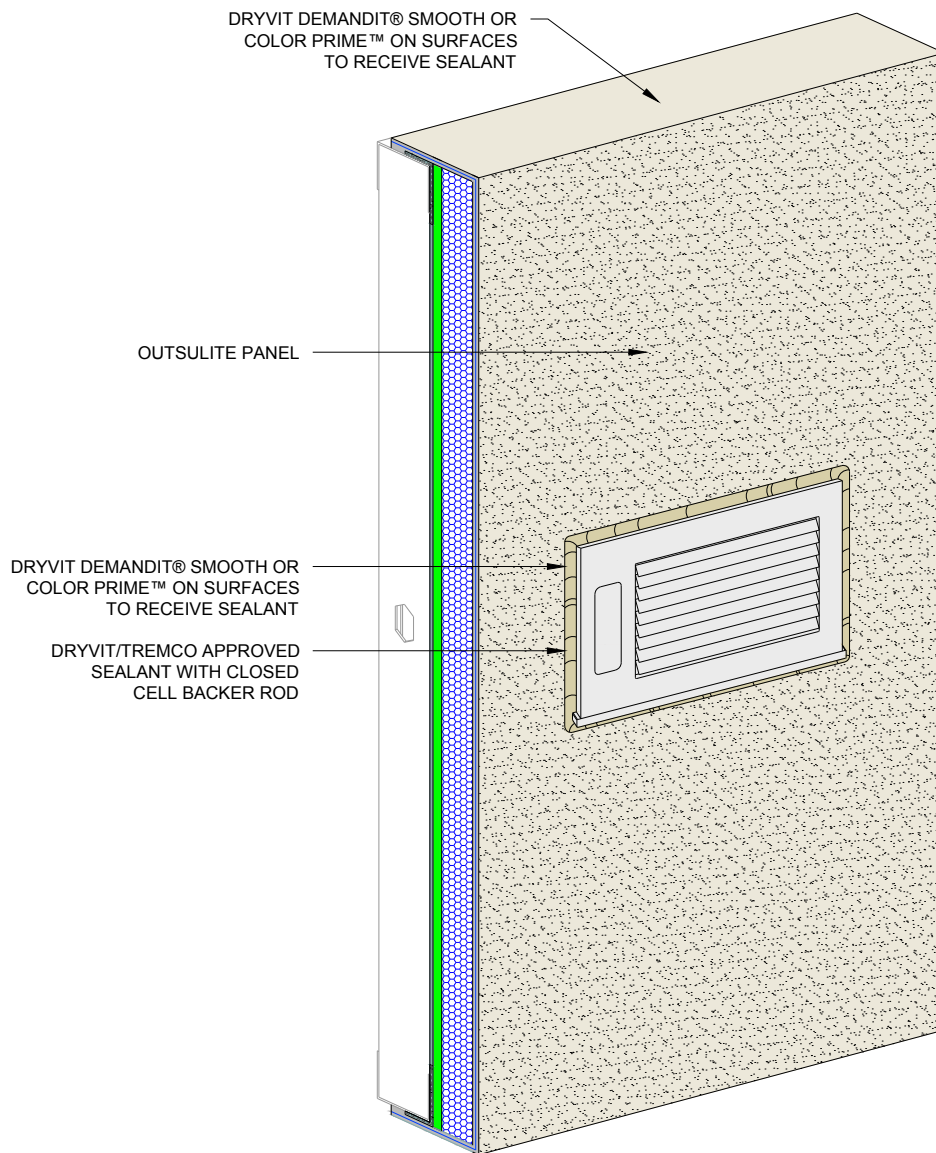
NOTES:

1. Dryvit recommends that ground floor applications and all facades exposed to abnormal stress, high traffic, or deliberate impact have the base coat reinforced with Panzer® Mesh prior to Standard or Standard Plus Mesh. Location of high impact zones should be indicated on contract drawings.
2. Light gauge steel frame shall be designed for specific project loads and conditions to meet local building codes by licensed engineer.
3. Refer to Dryvit publication DS840 for AWRB and flashing application.

*The architecture, engineering, and design of the project using the Dryvit products is the responsibility of the project's design professional. All systems must comply with local building codes and standards. This detail is for general information and guidance only and Dryvit specifically disclaims any liability for the use of this detail and for the architecture, design, engineering or workmanship of any project. The project design professional determines, in its sole discretion, whether this detail or a functionally equivalent detail is best suited for the project. Use of a functionally equivalent detail does not violate Dryvit's warranty. This detail is subject to change without notice. Contact Dryvit to ensure you have the most recent version.*



One Energy Way, West Warwick, RI 02893  
 Phone : 800-556-7752



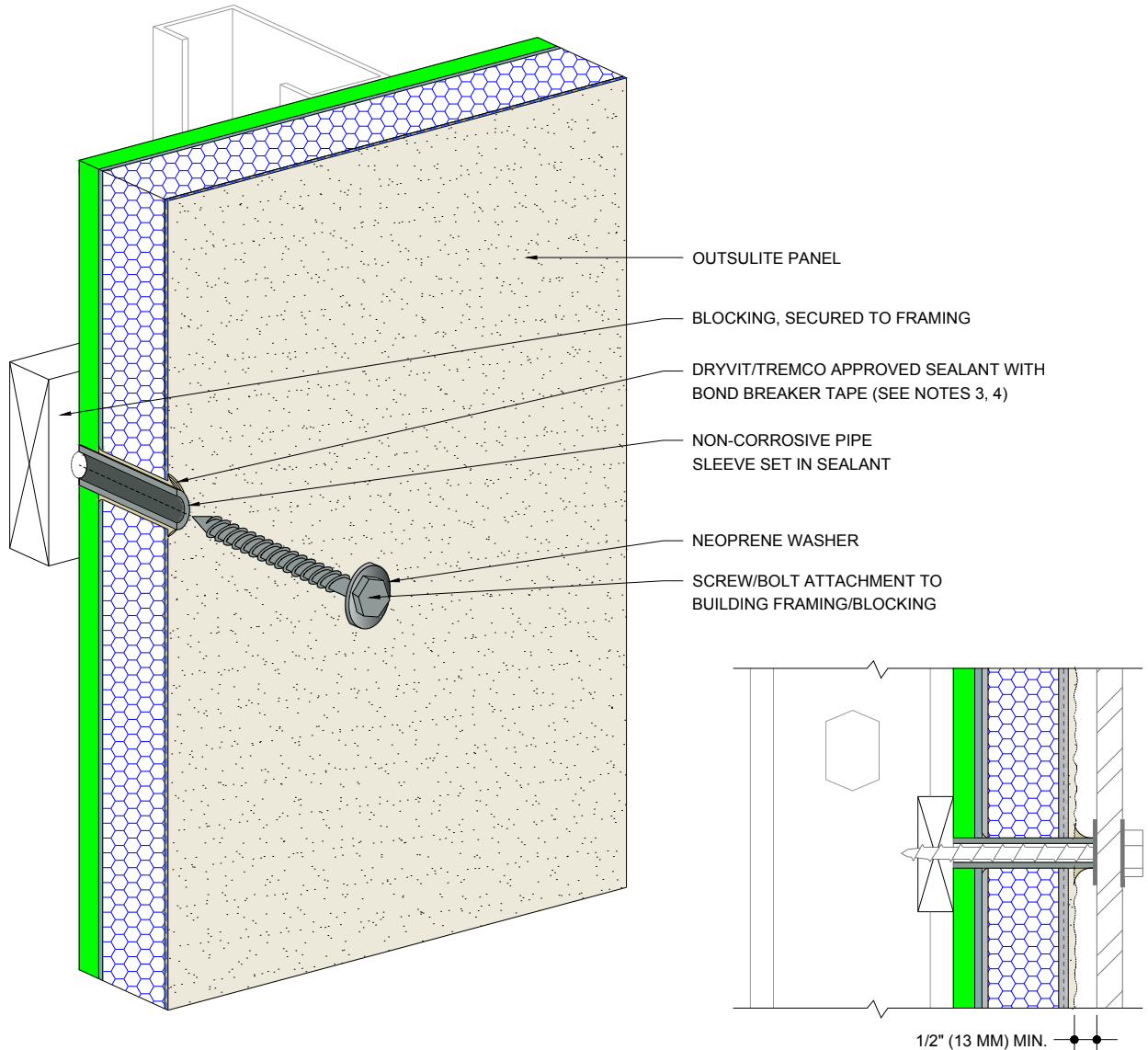
### Vent Penetration

NOTES:

1. Dryvit recommends that ground floor applications and all facades exposed to abnormal stress, high traffic, or deliberate impact have the base coat reinforced with Panzer® Mesh prior to Standard or Standard Plus Mesh. Location of high impact zones should be indicated on contract drawings.
2. Light gauge steel frame shall be designed for specific project loads and conditions to meet local building codes by licensed engineer.
3. Refer to Dryvit publication DS840 for AWRB and flashing application.

*The architecture, engineering, and design of the project using the Dryvit products is the responsibility of the project's design professional. All systems must comply with local building codes and standards. This detail is for general information and guidance only and Dryvit specifically disclaims any liability for the use of this detail and for the architecture, design, engineering or workmanship of any project. The project design professional determines, in its sole discretion, whether this detail or a functionally equivalent detail is best suited for the project. Use of a functionally equivalent detail does not violate Dryvit's warranty. This detail is subject to change without notice. Contact Dryvit to ensure you have the most recent version.*



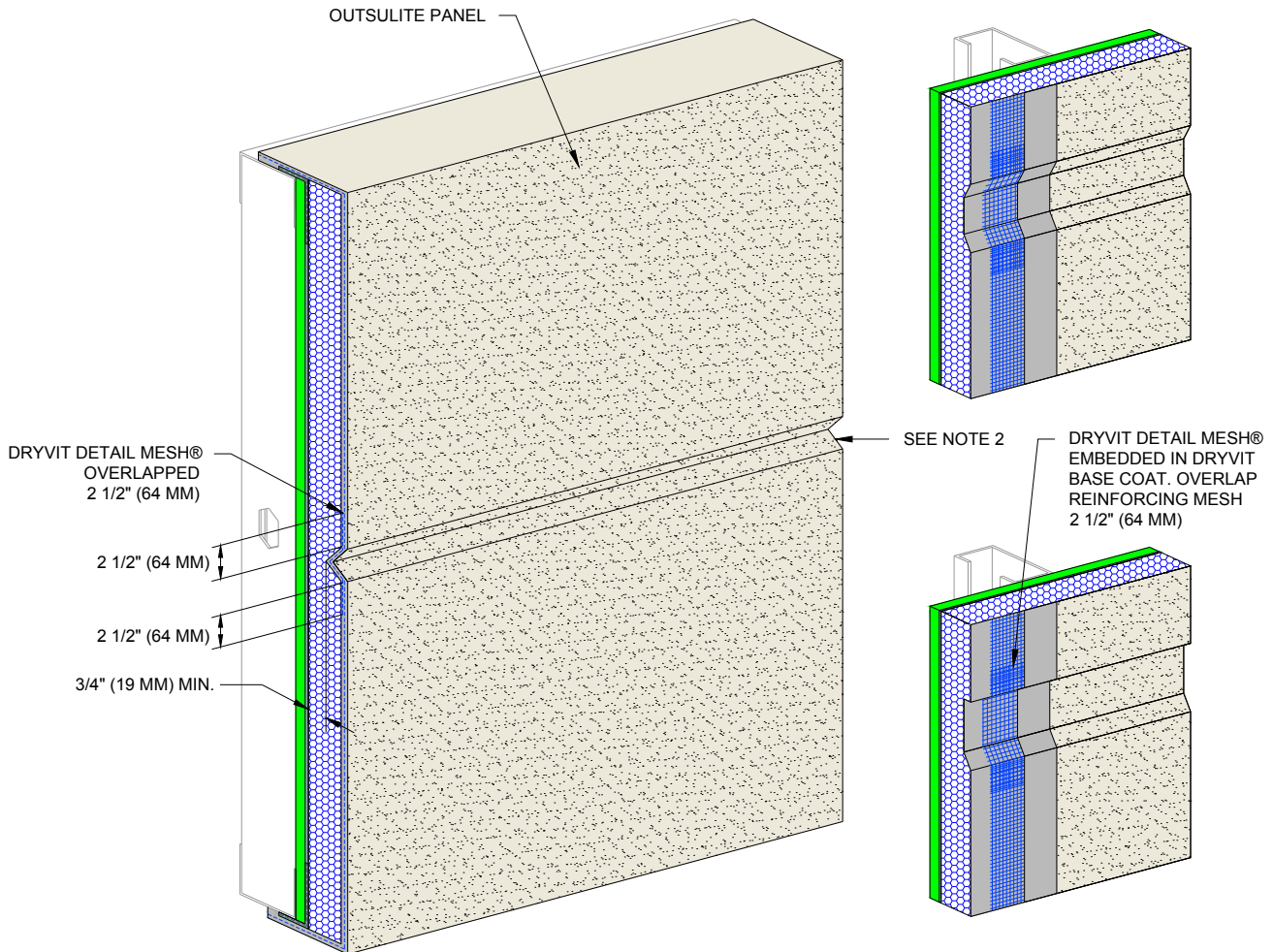


### Fastener through System

NOTES:

1. Dryvit recommends that ground floor applications and all facades exposed to abnormal stress, high traffic, or deliberate impact have the base coat reinforced with Panzer® Mesh prior to Standard or Standard Plus Mesh. Location of high impact zones should be indicated on contract drawings.
2. Light gauge steel frame shall be designed for specific project loads and conditions to meet local building codes by licensed engineer.
3. Refer to Dryvit publication DS840 for AWRB and flashing application.
4. Perimeter of pipe sleeve is sealed to prevent water entry into wall.

*The architecture, engineering, and design of the project using the Dryvit products is the responsibility of the project's design professional. All systems must comply with local building codes and standards. This detail is for general information and guidance only and Dryvit specifically disclaims any liability for the use of this detail and for the architecture, design, engineering or workmanship of any project. The project design professional determines, in its sole discretion, whether this detail or a functionally equivalent detail is best suited for the project. Use of a functionally equivalent detail does not violate Dryvit's warranty. This detail is subject to change without notice. Contact Dryvit to ensure you have the most recent version.*



**Aesthetic Reveals**

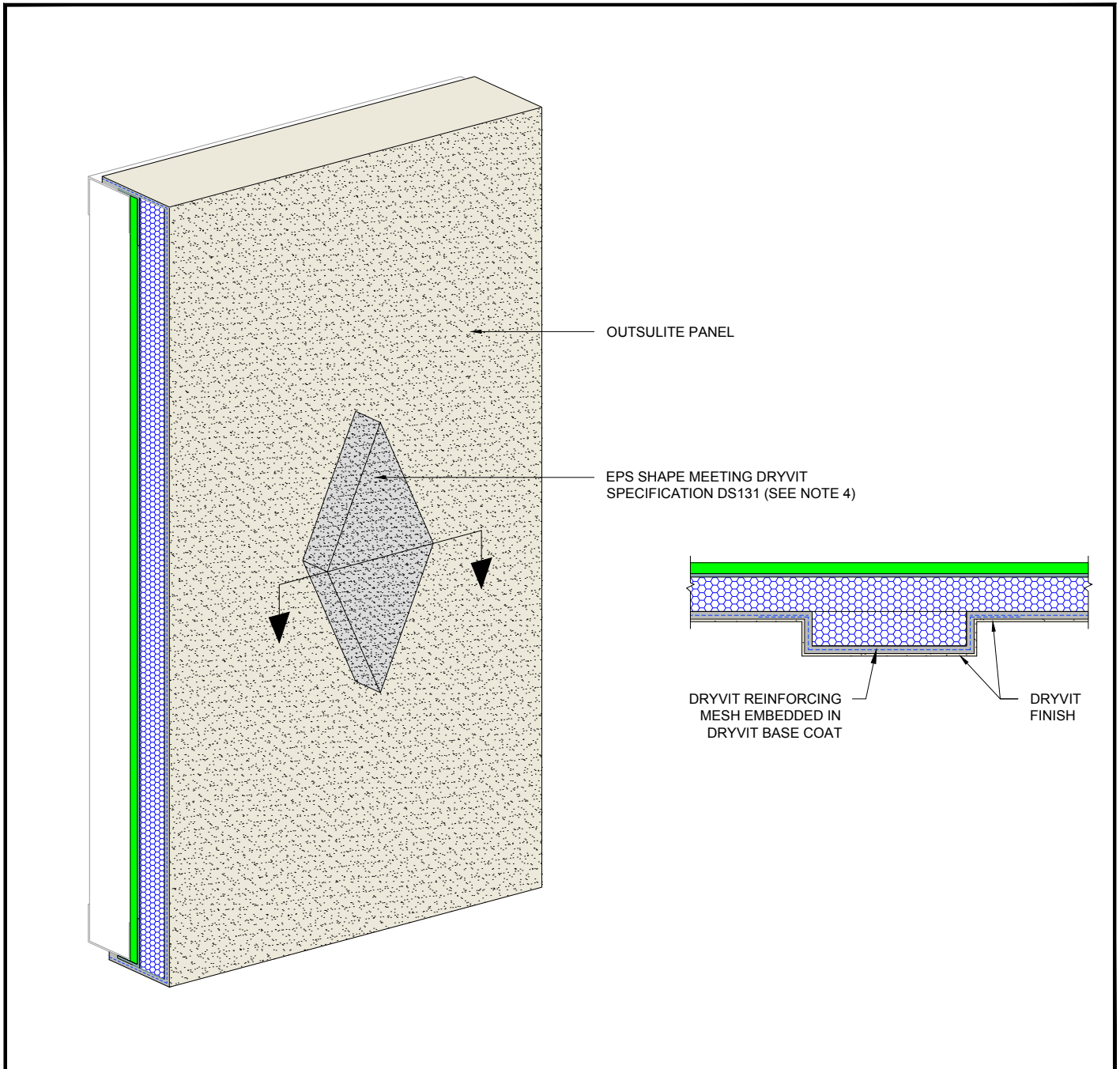
NOTES:

1. Dryvit recommends that ground floor applications and all facades exposed to abnormal stress, high traffic, or deliberate impact have the base coat reinforced with Panzer® Mesh prior to Standard or Standard Plus Mesh. Location of high impact zones should be indicated on contract drawings.
2. Light gauge steel frame shall be designed for specific project loads and conditions to meet local building codes by licensed engineer.
3. Refer to Dryvit publication DS840 for AWRB and flashing application.
4. Slope bottom edge of reveal for positive drainage.

*The architecture, engineering, and design of the project using the Dryvit products is the responsibility of the project's design professional. All systems must comply with local building codes and standards. This detail is for general information and guidance only and Dryvit specifically disclaims any liability for the use of this detail and for the architecture, design, engineering or workmanship of any project. The project design professional determines, in its sole discretion, whether this detail or a functionally equivalent detail is best suited for the project. Use of a functionally equivalent detail does not violate Dryvit's warranty. This detail is subject to change without notice. Contact Dryvit to ensure you have the most recent version.*



One Energy Way, West Warwick, RI 02893  
 Phone : 800-556-7752



EPS Shapes

NOTES:

1. Dryvit recommends that ground floor applications and all facades exposed to abnormal stress, high traffic, or deliberate impact have the base coat reinforced with Panzer® Mesh prior to Standard or Standard Plus Mesh. Location of high impact zones should be indicated on contract drawings.
2. Light gauge steel frame shall be designed for specific project loads and conditions to meet local building codes by licensed engineer.
3. Refer to Dryvit publication DS840 for AWRB and flashing application.
4. Maximum thickness of EPS built out shapes shall not exceed 13" (330 mm) at any point measured from the substrate. EPS thickness is dictated by local code authority and applicable testing.

*The architecture, engineering, and design of the project using the Dryvit products is the responsibility of the project's design professional. All systems must comply with local building codes and standards. This detail is for general information and guidance only and Dryvit specifically disclaims any liability for the use of this detail and for the architecture, design, engineering or workmanship of any project. The project design professional determines, in its sole discretion, whether this detail or a functionally equivalent detail is best suited for the project. Use of a functionally equivalent detail does not violate Dryvit's warranty. This detail is subject to change without notice. Contact Dryvit to ensure you have the most recent version.*



One Energy Way, West Warwick, RI 02893  
 Phone : 800-556-7752