

Dryvit Outsulation[®] Systems

Exterior Wall Insulation and Finish Systems
That Incorporate Continuous Insulation



DS860

Details for Dryvit Outsulation Systems Meeting Hurricane Zone, High-Velocity Impact Requirements

TABLE OF CONTENTS

OUTSULATION® PLUS MD SYSTEM®

Over 1/2" Gypsum, DensGlass Gold, Securock or e2XP (30 feet or less)	NOA 17-0807.17
Over 5/8" DensGlass Gold, Securock or e2XP (30 feet or less)	NOA 17-0807.16
Over ASTM C 1177 Sheathing (above 30 feet)	NOA 18-0123.09
Over 5/8" e2XP (30 feet or less)	NOA 18-0123.10
Over 5/8" e2XP (30 feet or less)	NOA 18-0123.11
Over Concrete or Concrete Block	NOA 17-0807.13
Over ASTM C 1177 Sheathing	NOA 19-0808.01
Over Plywood	NOA 17-0807.19

OUTSULATION® SYSTEM

Over 5/8" DensGlass Gold, Securock or e2XP (30 feet or less)	NOA 18-0123.12
Over 1/2" Gypsum, DensGlass Gold, Securock or e2XP (30 feet or less)	NOA 17-0807.14
Over 5/8" e2XP (30 feet or less)	NOA 18-0123.10
Over 5/8" e2XP (30 feet or less)	NOA 18-0123.11
Over Gypsum, DensGlass Gold or Securock (above 30 feet)	NOA 17-0807.15
Over ASTM C 1177 Sheathing (above 30 feet)	NOA 18-0123.09
Over Concrete or Concrete Block	NOA 17-0807.13
Over ASTM C 1177 Sheathing	NOA 19-0808.01

OUTSULATION® X SYSTEM

Over 5/8" ASTM C 1177 Sheathing	NOA 17-0807.18
---------------------------------	----------------

NOTE

DRYVIT MAKES NO REPRESENTATION REGARDING CONFORMITY OF ITS SUGGESTIONS TO MODEL BUILDING CODES, ENGINEERING CRITERIA, SPECIFIC APPLICATIONS, OR PROJECT LOCATIONS. ALL COMPONENTS INDICATED IN ILLUSTRATIONS, AS WELL AS OTHERS THAT MAY BE REQUIRED FOR THE INTEGRITY OF THE SYSTEM SHALL BE DESIGNED, DETAILED, AND ENGINEERED BY REPRESENTATIVES OF THE ARCHITECT, OWNER, OR CONTRACTOR TO BE IN CONFORMANCE WITH MODEL CODES, ARCHITECTURAL, AND ENGINEERING REQUIREMENTS PERTAINING TO SPECIFIC BUILDING PROJECTS.

DRYVIT MAKES NO WARRANTY, EXPRESSED OR IMPLIED, AS TO THE ARCHITECTURAL DESIGN, ENGINEERING, OR WORKMANSHIP OF PROJECTS UTILIZING DRYVIT SYSTEMS OR PRODUCTS.

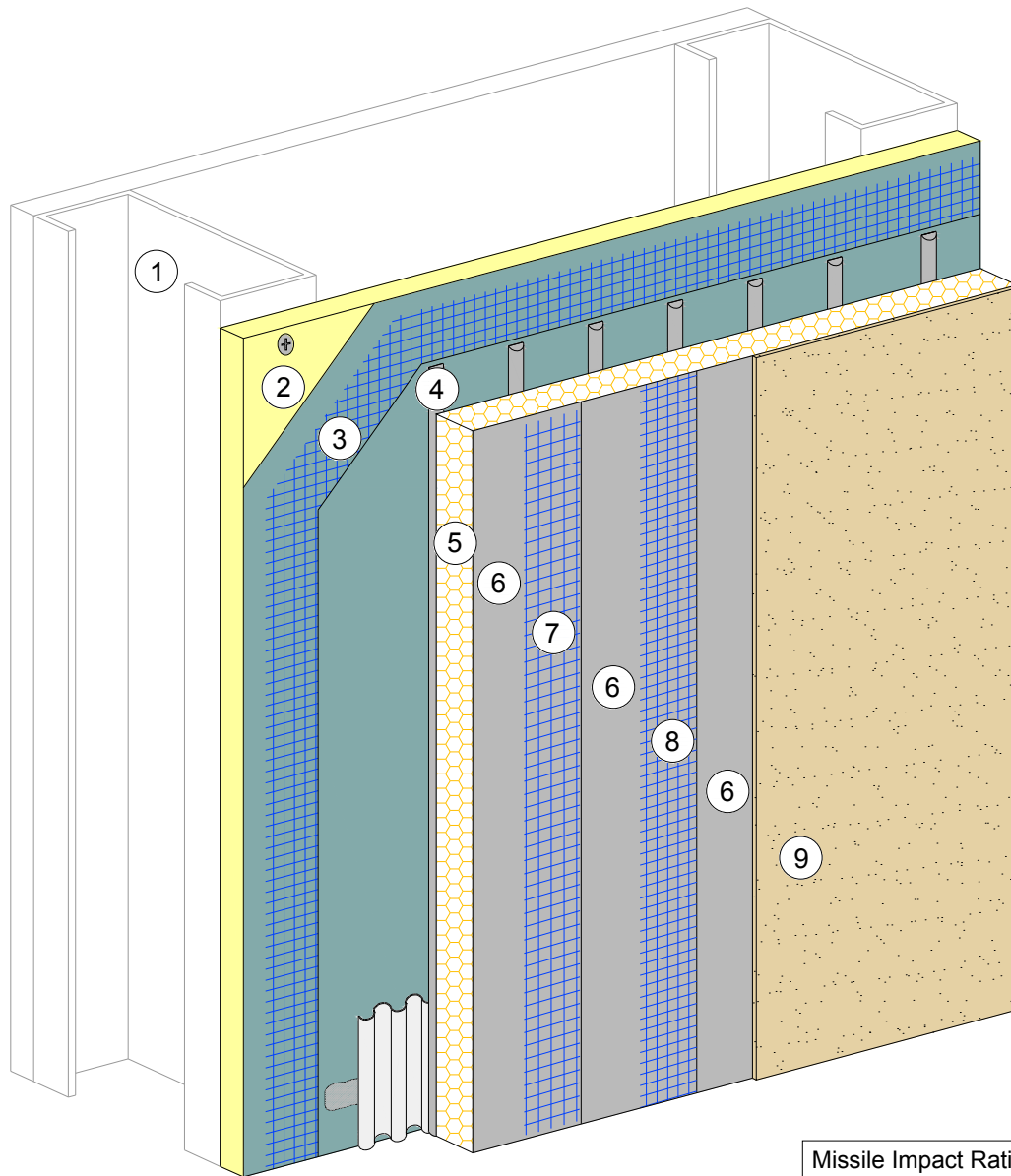
THE LIABILITIES OF DRYVIT SHALL BE AS STATED IN THE SYSTEM'S LIMITED COMMERCIAL WARRANTY. CONTACT DRYVIT FOR A FULL AND COMPLETE COPY OF THE WARRANTY.

THE ARCHITECTURE, ENGINEERING, AND DESIGN OF THE PROJECT USING THE DRYVIT PRODUCTS IS THE RESPONSIBILITY OF THE PROJECT'S DESIGN PROFESSIONAL. ALL SYSTEMS MUST COMPLY WITH LOCAL BUILDING CODES AND STANDARDS. THIS DETAIL IS FOR GENERAL INFORMATION AND GUIDANCE ONLY AND DRYVIT SPECIFICALLY DISCLAIMS ANY LIABILITY FOR THE USE OF THIS DETAIL AND FOR THE ARCHITECTURE, DESIGN, ENGINEERING OR WORKMANSHIP OF ANY PROJECT. THE PROJECT DESIGN PROFESSIONAL DETERMINES, IN ITS SOLE DISCRETION, WHETHER THIS DETAIL OR A FUNCTIONALLY EQUIVALENT DETAIL IS BEST SUITED FOR THE PROJECT. USE OF A FUNCTIONALLY EQUIVALENT DETAIL DOES NOT VIOLATE DRYVIT'S WARRANTY. THIS DETAIL IS SUBJECT TO CHANGE WITHOUT NOTICE. CONTACT DRYVIT TO ENSURE YOU HAVE THE MOST RECENT VERSION.

Dryvit Outsulation® Systems

Meeting Hurricane Zone, High-Velocity Impact Requirements





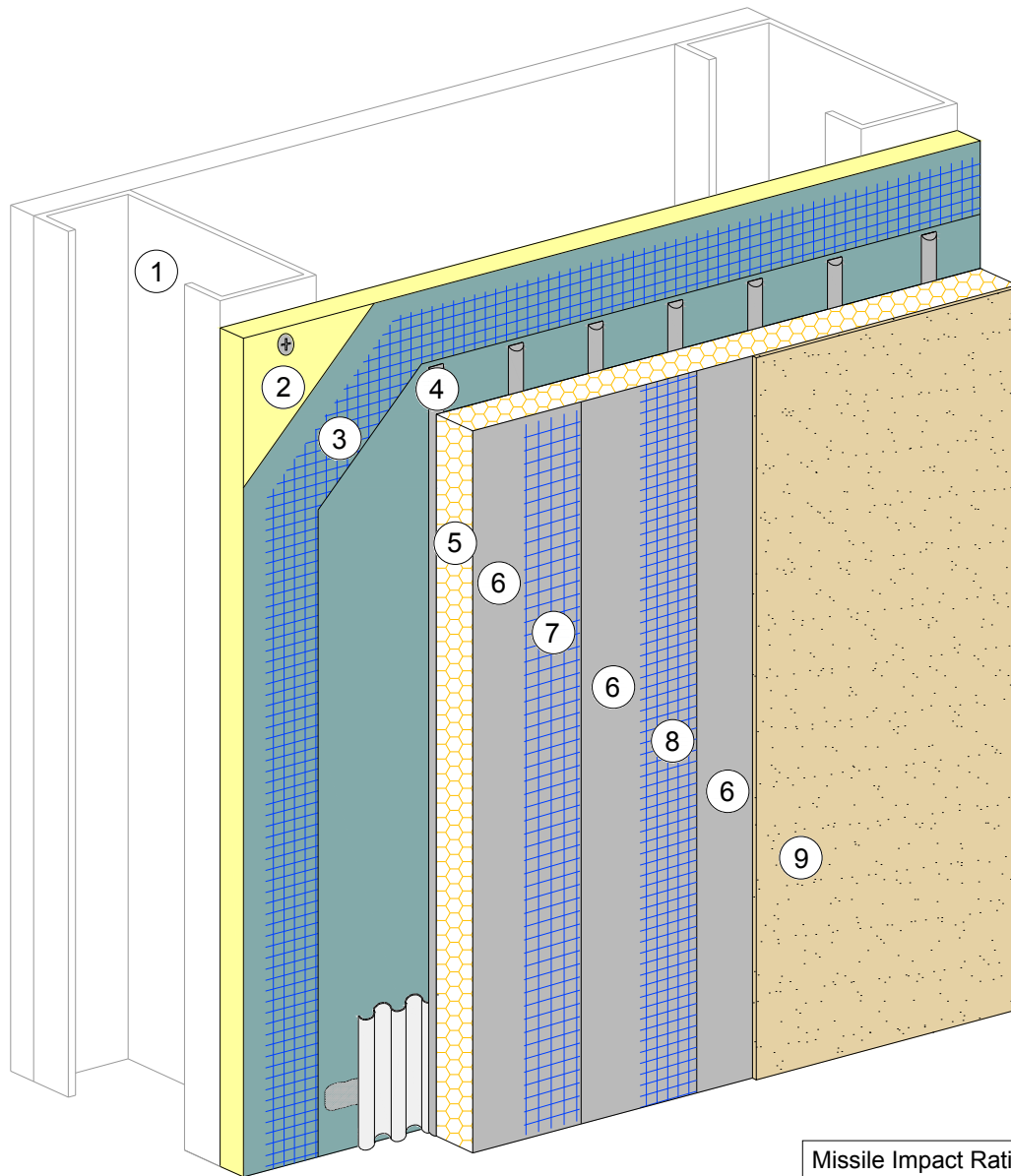
Missile Impact Rating: Large & Small
Design Pressure: ±66.5 psf

1. MINIMUM 3 5/8" X 18 GAUGE STEEL STUDS AT 16" O.C.
2. MINIMUM 1/2" EXTERIOR GRADE GYPSUM SHEATHING, MEETING ASTM C 1396 (FORMERLY ASTM C 79) OR MINIMUM 1/2" DENS-GLASS GOLD, USG SECUROCK, OR NATIONAL GYPSUM e2XP SHEATHING, MEETING ASTM C 1177 FASTENED WITH MINIMUM NO. 6 X 1 1/4" SELF TAPPING SCREWS SPACED 6" O.C.
3. DRYVIT STANDARD PLUS REINFORCING MESH (6.0 OZ/SQ YD) EMBEDDED IN DRYVIT BACKSTOP® NT™
4. DRYVIT PRIMUS® OR GENESIS® ADHESIVE APPLIED IN VERTICAL NOTCHED TROWEL CONFIGURATION TO BACK OF EPS BOARD
5. MINIMUM 1" THICK EXPANDED POLYSTYRENE (EPS) INSULATION BOARD MEETING FBC SECTION 2612
6. DRYVIT GENESIS BASE COAT
7. DRYVIT PANZER® 20 REINFORCING MESH EMBEDDED IN DRYVIT BASE COAT
8. DRYVIT STANDARD REINFORCING MESH (4.3 OZ/SQ YD) EMBEDDED IN DRYVIT BASE COAT
9. DRYVIT FINISH
10. FOR FULL NOTICE OF ACCEPTANCE CLICK HERE: [NOA 17-0807.17](#)

The architecture, engineering, and design of the project using the Dryvit products is the responsibility of the project's design professional. All systems must comply with local building codes and standards. This detail is for general information and guidance only and Dryvit specifically disclaims any liability for the use of this detail and for the architecture, design, engineering or workmanship of any project. The project design professional determines, in its sole discretion, whether this detail or a functionally equivalent detail is best suited for the project. Use of a functionally equivalent detail does not violate Dryvit's warranty. This detail is subject to change without notice. Contact Dryvit to ensure you have the most recent version.

©Dryvit Systems, Inc. | Issued: 11/2017





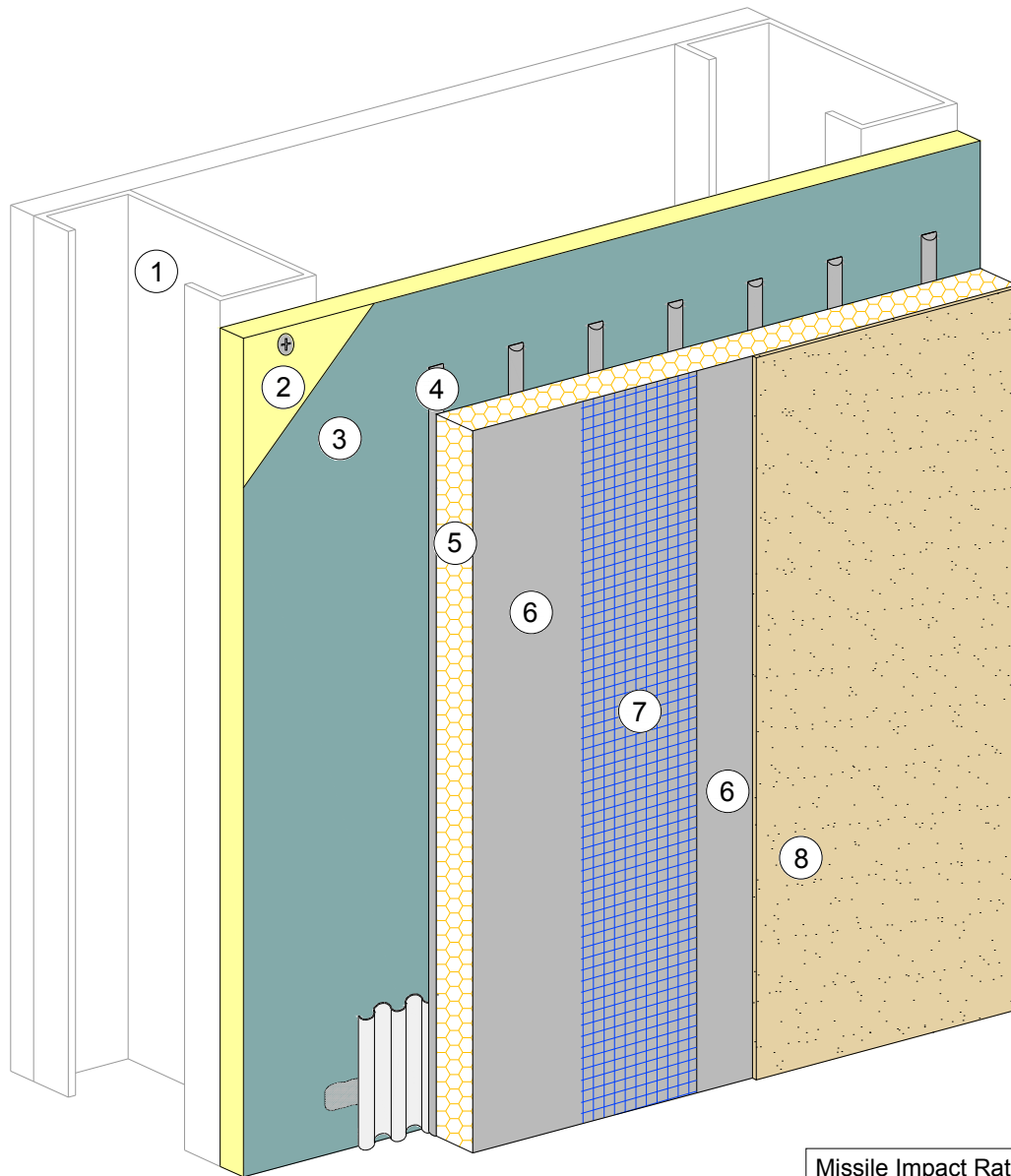
Missile Impact Rating: Large & Small
Design Pressure: ±106 psf

1. MINIMUM 6" X 16 GAUGE STEEL STUDS AT 16" O.C.
2. MINIMUM 5/8" DENS-GLASS GOLD, USG SECUROCK, OR NATIONAL GYPSUM e2XP SHEATHING, MEETING ASTM C 1177, FASTENED WITH MINIMUM NO. 6 X 1 1/4" BUGLE HEAD SCREWS SPACED AT 4" O.C.
3. DRYVIT STANDARD PLUS REINFORCING MESH (6.0 OZ/SQ YD) EMBEDDED IN DRYVIT BACKSTOP® NT™
4. DRYVIT PRIMUS®, GENESIS®, OR GENESIS® DM ADHESIVE APPLIED IN VERTICAL NOTCHED TROWEL CONFIGURATION TO BACK OF EPS BOARD
5. MINIMUM 1" THICK EXPANDED POLYSTYRENE (EPS) INSULATION BOARD MEETING FBC SECTION 2612
6. DRYVIT PRIMUS, GENESIS, OR GENESIS DM BASE COAT
7. DRYVIT PANZER® 20 REINFORCING MESH (20.5 OZ/SQ YD) EMBEDDED IN DRYVIT BASE COAT
8. DRYVIT STANDARD REINFORCING MESH (4.3 OZ/SQ YD) EMBEDDED IN DRYVIT BASE COAT
9. DRYVIT FINISH
10. FOR FULL NOTICE OF ACCEPTANCE CLICK HERE: [NOA 17-0807.16](#)

The architecture, engineering, and design of the project using the Dryvit products is the responsibility of the project's design professional. All systems must comply with local building codes and standards. This detail is for general information and guidance only and Dryvit specifically disclaims any liability for the use of this detail and for the architecture, design, engineering or workmanship of any project. The project design professional determines, in its sole discretion, whether this detail or a functionally equivalent detail is best suited for the project. Use of a functionally equivalent detail does not violate Dryvit's warranty. This detail is subject to change without notice. Contact Dryvit to ensure you have the most recent version.

©Dryvit Systems, Inc. | Issued: 11/2017





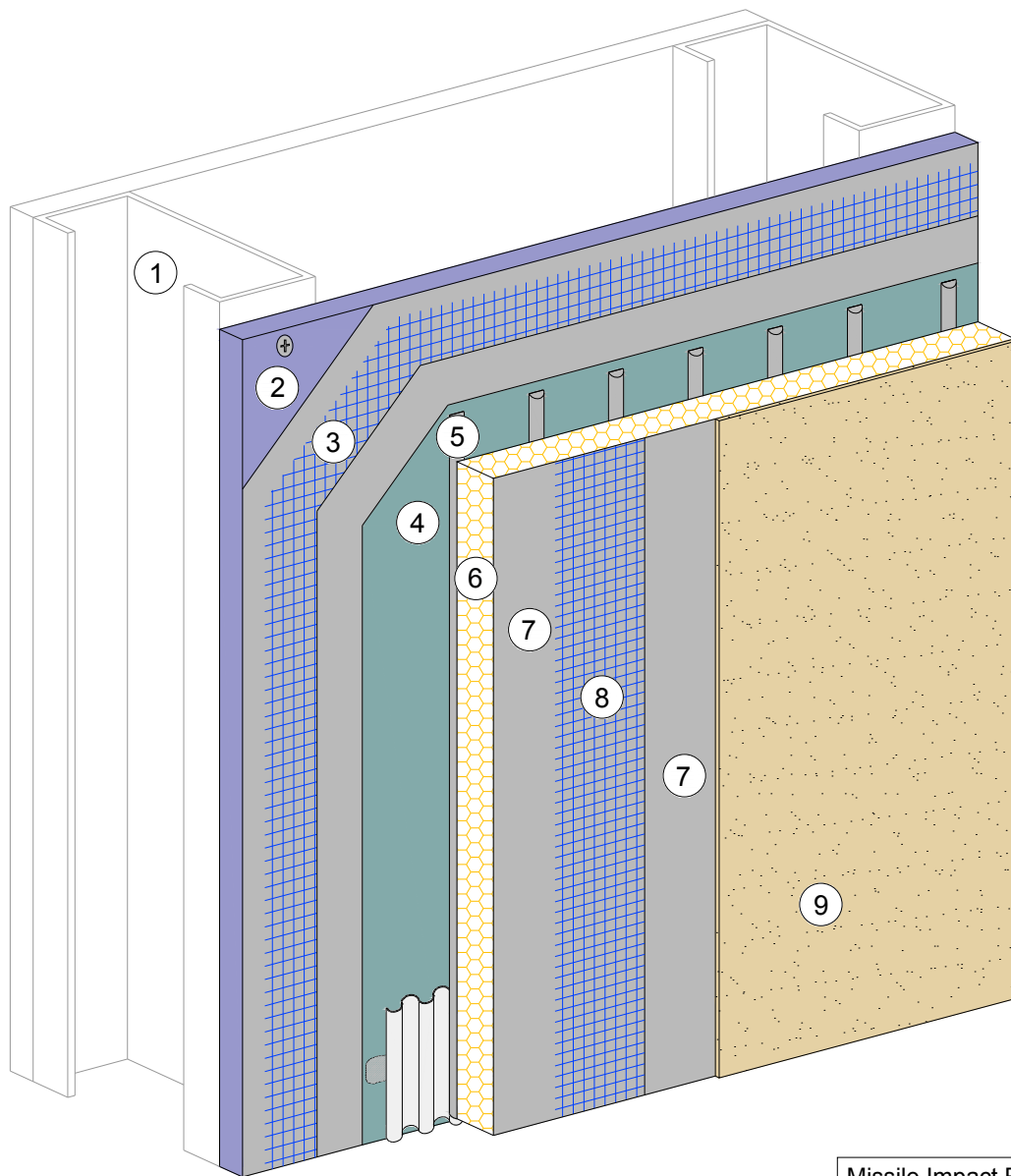
Missile Impact Rating: Small Missile
Design Pressure: ±93 psf

1. MINIMUM 3 5/8" X 18 GAUGE STEEL STUDS AT 16" O.C.
2. MINIMUM 5/8" ASTM C 1177 SHEATHING FASTENED WITH MINIMUM NO. 6 X 1 1/4" BUGLE HEAD SCREWS SPACED 6" O.C.
3. DRYVIT BACKSTOP® NT™
4. DRYVIT PRIMUS®, GENESIS®, OR GENESIS® DM ADHESIVE APPLIED IN VERTICAL NOTCHED TROWEL CONFIGURATION TO BACK OF EPS BOARD
5. MINIMUM 1" THICK EXPANDED POLYSTYRENE (EPS) INSULATION BOARD MEETING FBC SECTION 2612
6. DRYVIT PRIMUS, GENESIS, OR GENESIS DM BASE COAT
7. DRYVIT STANDARD REINFORCING MESH (4.3 OZ/SQ YD) EMBEDDED IN DRYVIT BASE COAT
8. DRYVIT FINISH or DRYVIT NEWBRICK®
9. FOR FULL NOTICE OF ACCEPTANCE CLICK HERE: [NOA 18-0123.09](#)

The architecture, engineering, and design of the project using the Dryvit products is the responsibility of the project's design professional. All systems must comply with local building codes and standards. This detail is for general information and guidance only and Dryvit specifically disclaims any liability for the use of this detail and for the architecture, design, engineering or workmanship of any project. The project design professional determines, in its sole discretion, whether this detail or a functionally equivalent detail is best suited for the project. Use of a functionally equivalent detail does not violate Dryvit's warranty. This detail is subject to change without notice. Contact Dryvit to ensure you have the most recent version.

©Dryvit Systems, Inc. | Issued: 10/2016





Missile Impact Rating: Large & Small

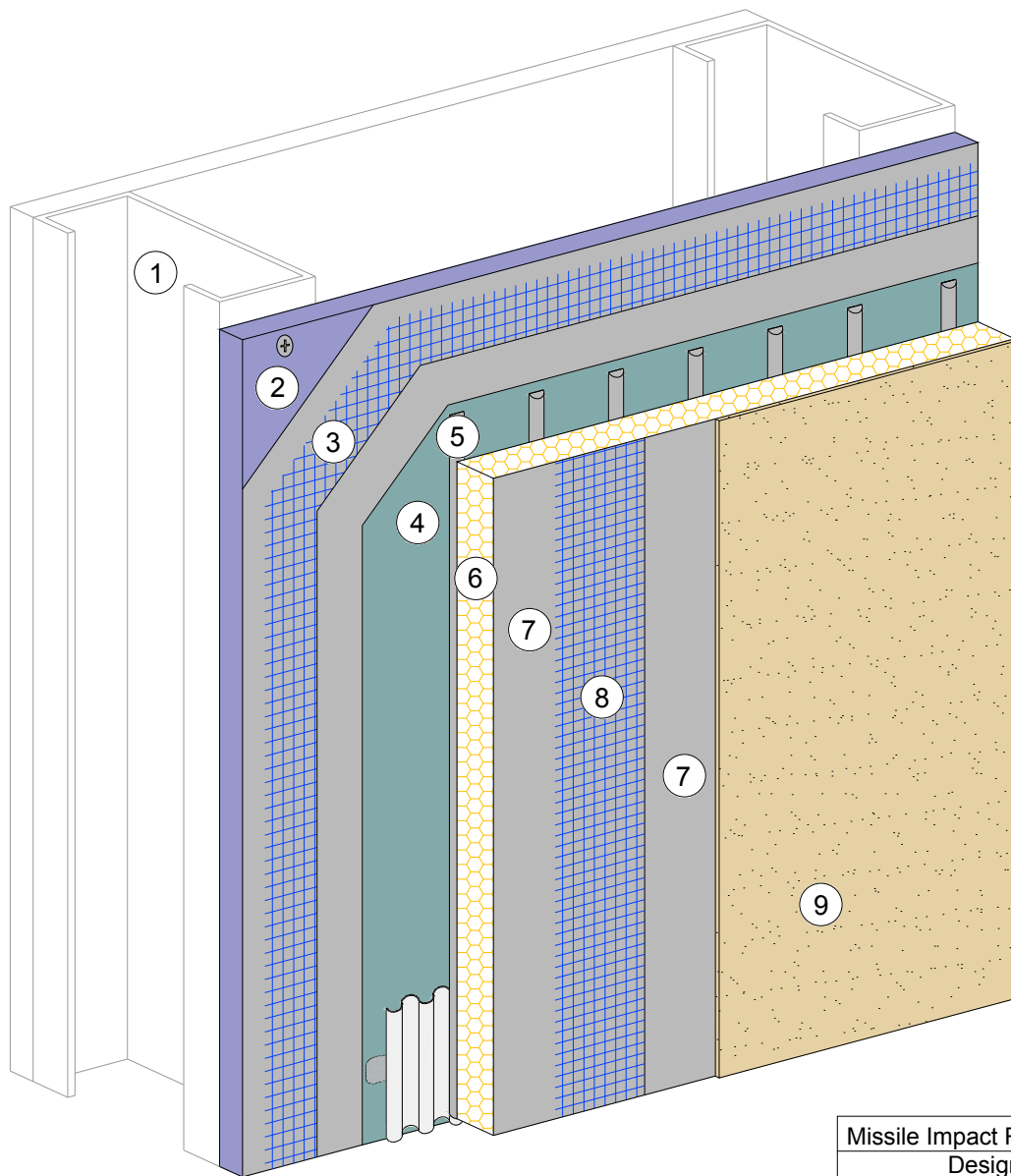
Design Pressure: ±110 psf

1. MINIMUM 3 5/8" X 18 GAUGE STEEL STUDS AT 16" O.C.
2. MINIMUM 5/8" NATIONAL GYPSUM e²XP SHEATHING FASTENED WITH MINIMUM NO. 6 X 1 1/4" SELF DRILLING SCREWS SPACED 6" O.C.
3. DRYVIT PANZER[®] 20 REINFORCING MESH (20.5 OZ/SQ YD) EMBEDDED IN DRYVIT PRIMUS[®], GENESIS[®], OR GENESIS[®] DM BASE COAT
4. DRYVIT BACKSTOP[®] NT[™]
5. DRYVIT PRIMUS, GENESIS, OR GENESIS DM ADHESIVE APPLIED IN VERTICAL NOTCHED TROWEL CONFIGURATION TO BACK OF EPS BOARD
6. MINIMUM 1" THICK EXPANDED POLYSTYRENE (EPS) INSULATION BOARD MEETING FBC SECTION 2612
7. DRYVIT PRIMUS, GENESIS, OR GENESIS DM BASE COAT
8. DRYVIT STANDARD REINFORCING MESH (4.3 OZ/SQ YD) EMBEDDED IN DRYVIT BASE COAT
9. DRYVIT FINISH or DRYVIT NEWBRICK[®]
10. FOR FULL NOTICE OF ACCEPTANCE CLICK HERE: [NOA 18-0123.10](#)

The architecture, engineering, and design of the project using the Dryvit products is the responsibility of the project's design professional. All systems must comply with local building codes and standards. This detail is for general information and guidance only and Dryvit specifically disclaims any liability for the use of this detail and for the architecture, design, engineering or workmanship of any project. The project design professional determines, in its sole discretion, whether this detail or a functionally equivalent detail is best suited for the project. Use of a functionally equivalent detail does not violate Dryvit's warranty. This detail is subject to change without notice. Contact Dryvit to ensure you have the most recent version.

©Dryvit Systems, Inc. | Issued: 10/2016





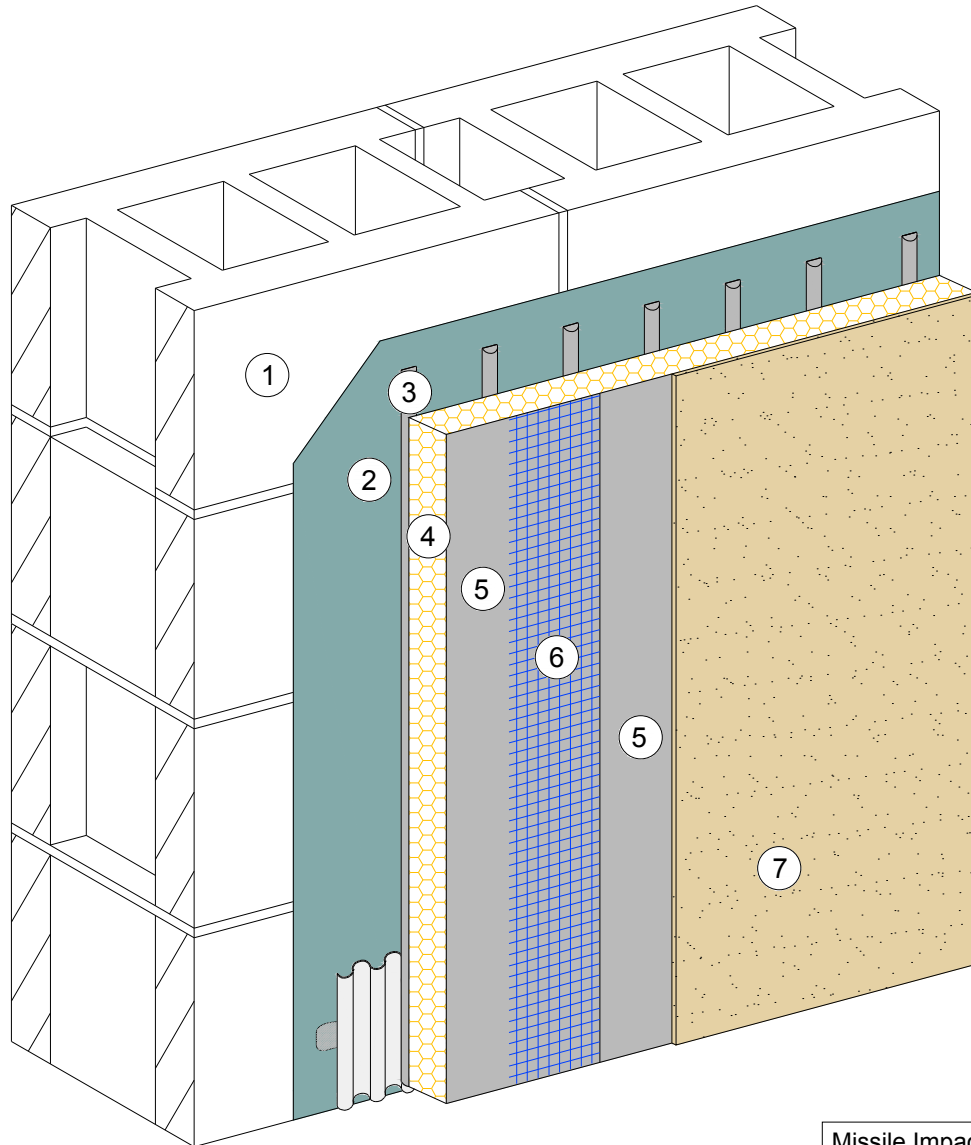
Missile Impact Rating: Large & Small Design Pressure	
6" O.C. Screws	±135 psf
4" O.C. Screws	±155 psf

1. MINIMUM 6" X 18 GAUGE STEEL STUDS AT 16" O.C.
2. MINIMUM 5/8" NATIONAL GYPSUM e²XP SHEATHING FASTENED WITH MINIMUM NO. 6 X 1 1/4" SELF DRILLING SCREWS SPACED IN ACCORDANCE WITH TABLE FOR APPLICABLE DESIGN PRESSURE
3. DRYVIT PANZER[®] 20 REINFORCING MESH (20.5 OZ/SQ YD) EMBEDDED IN DRYVIT PRIMUS[®], GENESIS[®], OR GENESIS[®] DM BASE COAT
4. DRYVIT BACKSTOP[®] NT[™]
5. DRYVIT PRIMUS, GENESIS, OR GENESIS DM ADHESIVE APPLIED IN VERTICAL NOTCHED TROWEL CONFIGURATION TO BACK OF EPS BOARD
6. MINIMUM 1" THICK EXPANDED POLYSTYRENE (EPS) INSULATION BOARD MEETING FBC SECTION 2612
7. DRYVIT PRIMUS, GENESIS, OR GENESIS DM BASE COAT
8. DRYVIT STANDARD REINFORCING MESH (4.3 OZ/SQ YD) EMBEDDED IN DRYVIT BASE COAT
9. DRYVIT FINISH or DRYVIT NEWBRICK[®]
10. FOR FULL NOTICE OF ACCEPTANCE CLICK HERE: [NOA 18-0123.11](#)

The architecture, engineering, and design of the project using the Dryvit products is the responsibility of the project's design professional. All systems must comply with local building codes and standards. This detail is for general information and guidance only and Dryvit specifically disclaims any liability for the use of this detail and for the architecture, design, engineering or workmanship of any project. The project design professional determines, in its sole discretion, whether this detail or a functionally equivalent detail is best suited for the project. Use of a functionally equivalent detail does not violate Dryvit's warranty. This detail is subject to change without notice. Contact Dryvit to ensure you have the most recent version.

©Dryvit Systems, Inc. | Issued: 10/2016





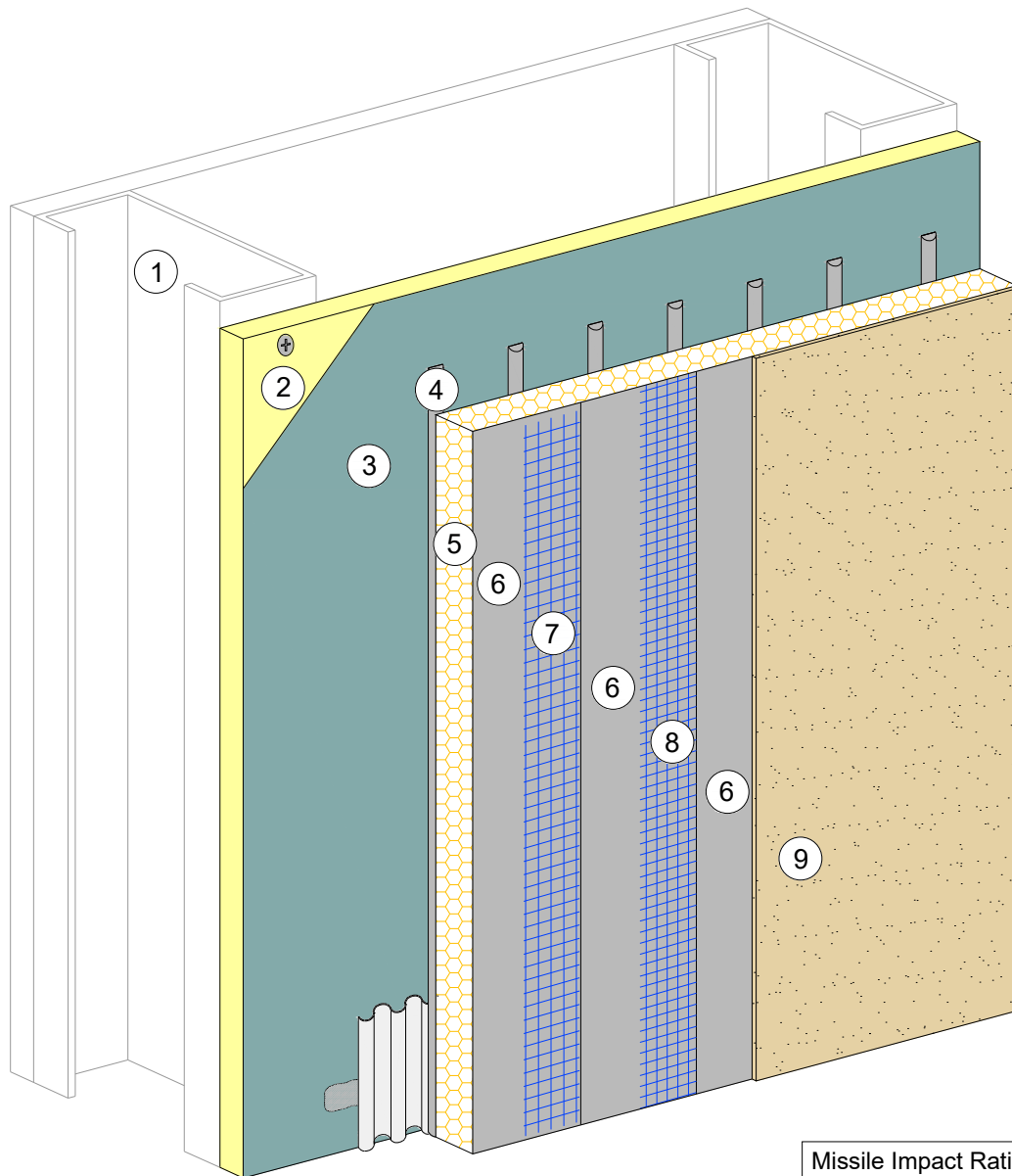
Missile Impact Rating: Large & Small
Design Pressure: ±160 psf

1. CONCRETE WALL (ACI 318) CONCRETE MASONRY STRUCTURE (ASTM C90) AND TYPE S MORTAR (ASTM C270) COMPLYING WITH S.F.B.C.
2. DRYVIT BACKSTOP® NT™
3. DRYVIT PRIMUS®, GENESIS®, OR GENESIS® DM ADHESIVE APPLIED IN VERTICAL NOTCHED TROWEL CONFIGURATION TO BACK OF EPS BOARD
4. MINIMUM 1" THICK EXPANDED POLYSTYRENE (EPS) INSULATION BOARD MEETING FBC SECTION 2612
5. DRYVIT PRIMUS, GENESIS, OR GENESIS DM BASE COAT
6. DRYVIT STANDARD REINFORCING MESH (4.3 OZ/SQ YD) EMBEDDED IN DRYVIT BASE COAT
7. DRYVIT FINISH
8. FOR FULL NOTICE OF ACCEPTANCE CLICK HERE: [NOA 17-0807.13](#)

The architecture, engineering, and design of the project using the Dryvit products is the responsibility of the project's design professional. All systems must comply with local building codes and standards. This detail is for general information and guidance only and Dryvit specifically disclaims any liability for the use of this detail and for the architecture, design, engineering or workmanship of any project. The project design professional determines, in its sole discretion, whether this detail or a functionally equivalent detail is best suited for the project. Use of a functionally equivalent detail does not violate Dryvit's warranty. This detail is subject to change without notice. Contact Dryvit to ensure you have the most recent version.

©Dryvit Systems, Inc. | Issued: 11/2017





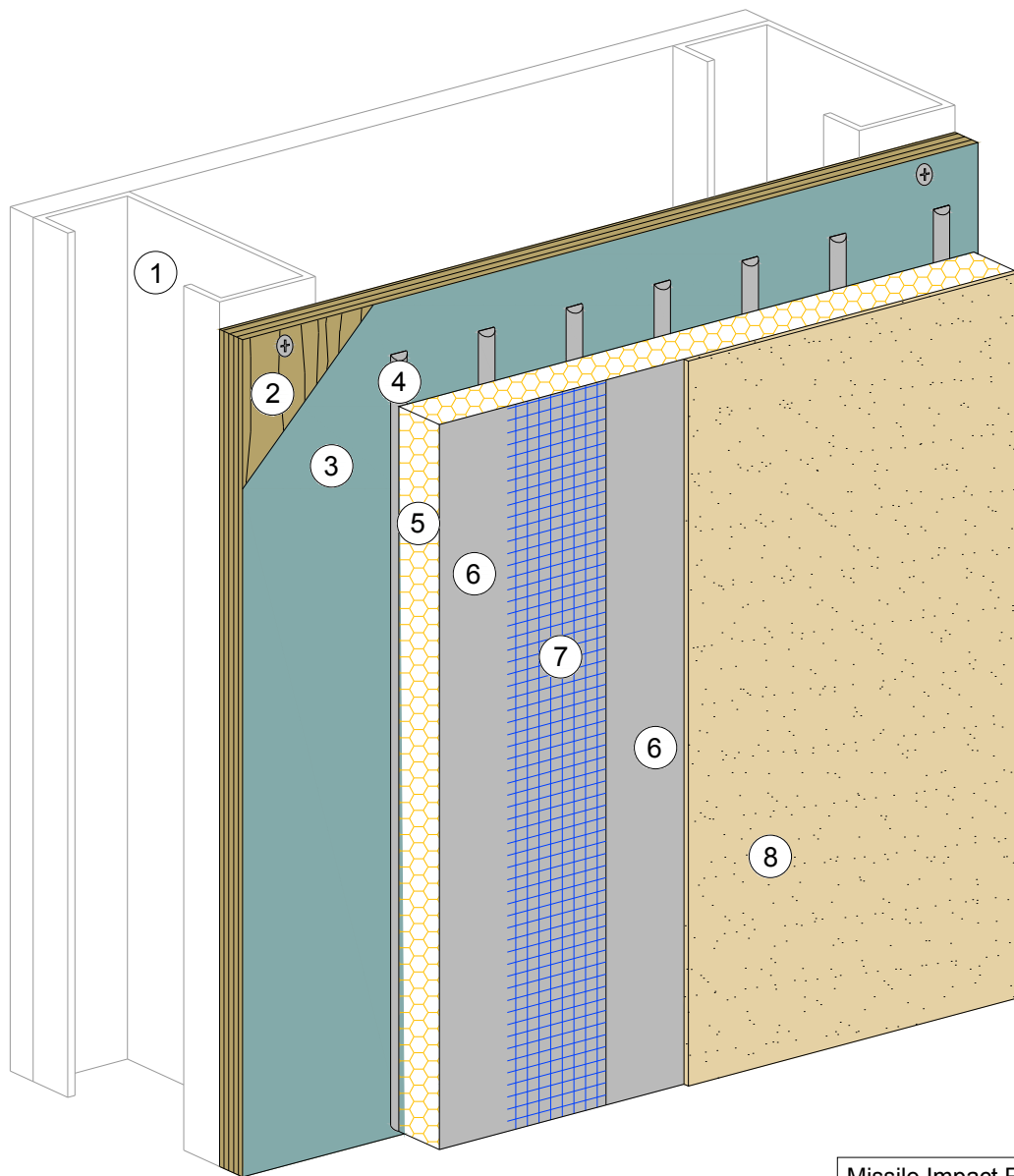
Missile Impact Rating: Large & Small
Design Pressure: ±70 psf

1. MINIMUM 3 5/8" X 18 GAUGE STEEL STUDS AT 16" O.C.
2. MINIMUM 1/2" ASTM C 1177 SHEATHING FASTENED WITH MINIMUM NO. 6 X 1 1/4" SELF DRILLING SCREWS SPACED 6" O.C.
3. DRYVIT BACKSTOP® NT
4. DRYVIT PRIMUS®, GENESIS®, OR GENESIS® DM ADHESIVE APPLIED IN VERTICAL NOTCHED TROWEL CONFIGURATION TO BACK OF EPS BOARD
5. MINIMUM 1" THICK EXPANDED POLYSTYRENE (EPS) INSULATION BOARD MEETING FBC SECTION 2612
6. DRYVIT PRIMUS, GENESIS, OR GENESIS DM BASE COAT
7. DRYVIT PANZER® 20 REINFORCING MESH (20.5 OZ/SQ YD) EMBEDDED IN DRYVIT BASE COAT
8. DRYVIT STANDARD REINFORCING MESH (4.3 OZ/SQ YD) EMBEDDED IN DRYVIT BASE COAT
9. DRYVIT FINISH
10. FOR FULL NOTICE OF ACCEPTANCE CLICK HERE: [NOA 19-0808.01](#)

The architecture, engineering, and design of the project using the Dryvit products is the responsibility of the project's design professional. All systems must comply with local building codes and standards. This detail is for general information and guidance only and Dryvit specifically disclaims any liability for the use of this detail and for the architecture, design, engineering or workmanship of any project. The project design professional determines, in its sole discretion, whether this detail or a functionally equivalent detail is best suited for the project. Use of a functionally equivalent detail does not violate Dryvit's warranty. This detail is subject to change without notice. Contact Dryvit to ensure you have the most recent version.

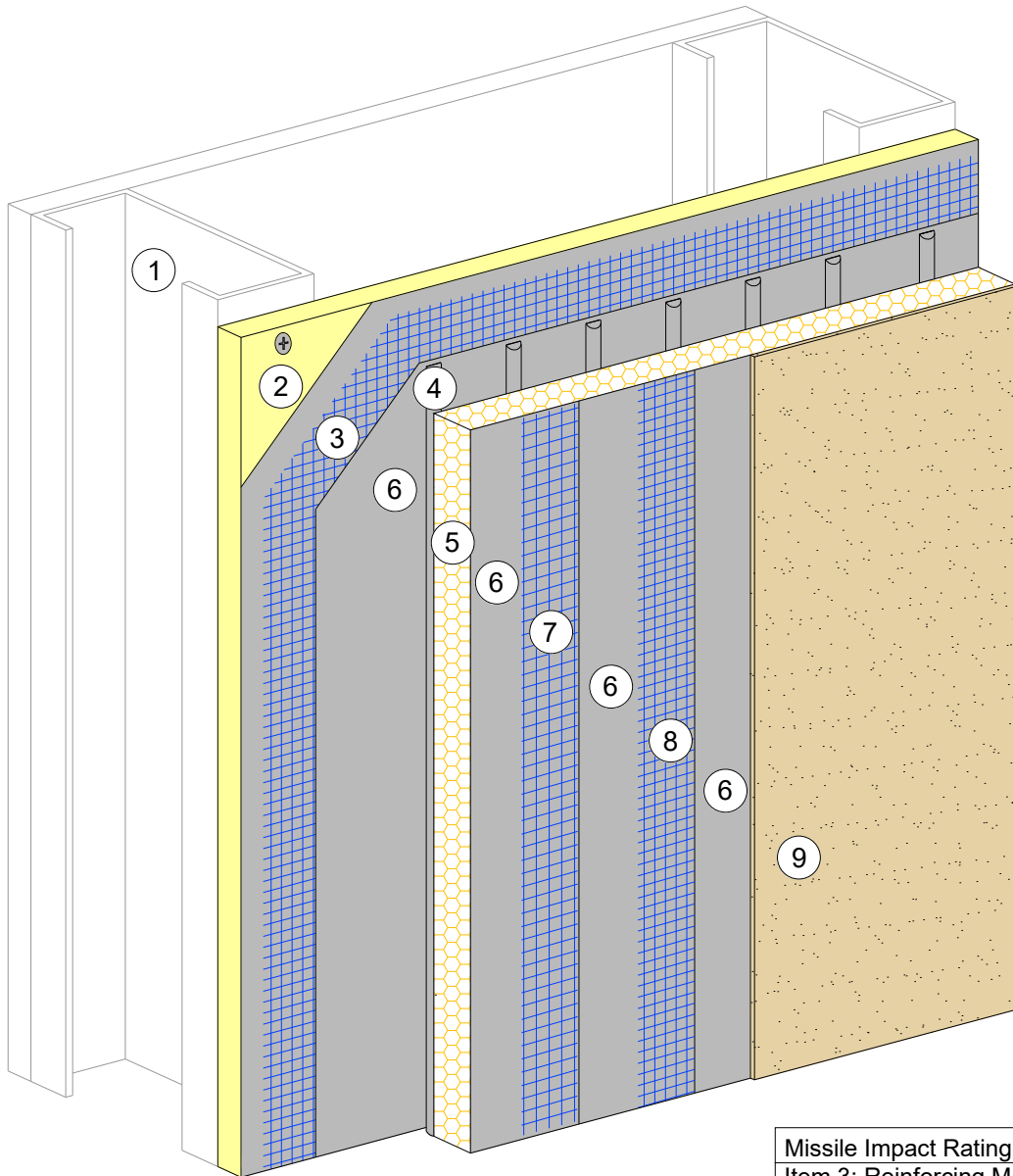
©Dryvit Systems, Inc. | Issued: 5/2020





Missile Impact Rating: Large & Small
Design Pressure: ±100 psf

1. MINIMUM 3 5/8" X 18 GAUGE STEEL STUDS AT 16" O.C.
2. MINIMUM 5/8" 5 PLY PLYWOOD FASTENED WITH MINIMUM DRYWALL SCREWS SPACED AT 6" O.C.
3. DRYVIT BACKSTOP[®] NT
4. DRYVIT PRIMUS[®] OR GENESIS[®] ADHESIVE APPLIED IN VERTICAL NOTCHED TROWEL CONFIGURATION TO BACK OF EPS BOARD
5. MINIMUM 1" THICK EXPANDED POLYSTYRENE (EPS) INSULATION BOARD MEETING FBC SECTION 2612
6. DRYVIT PRIMUS, GENESIS, OR GENESIS DM[®] BASE COAT
7. DRYVIT STANDARD REINFORCING MESH (4.3 OZ/SQ YD) EMBEDDED IN DRYVIT BASE COAT
8. DRYVIT FINISH
9. FOR FULL NOTICE OF ACCEPTANCE CLICK HERE: [NOA 17-0807.19](#)



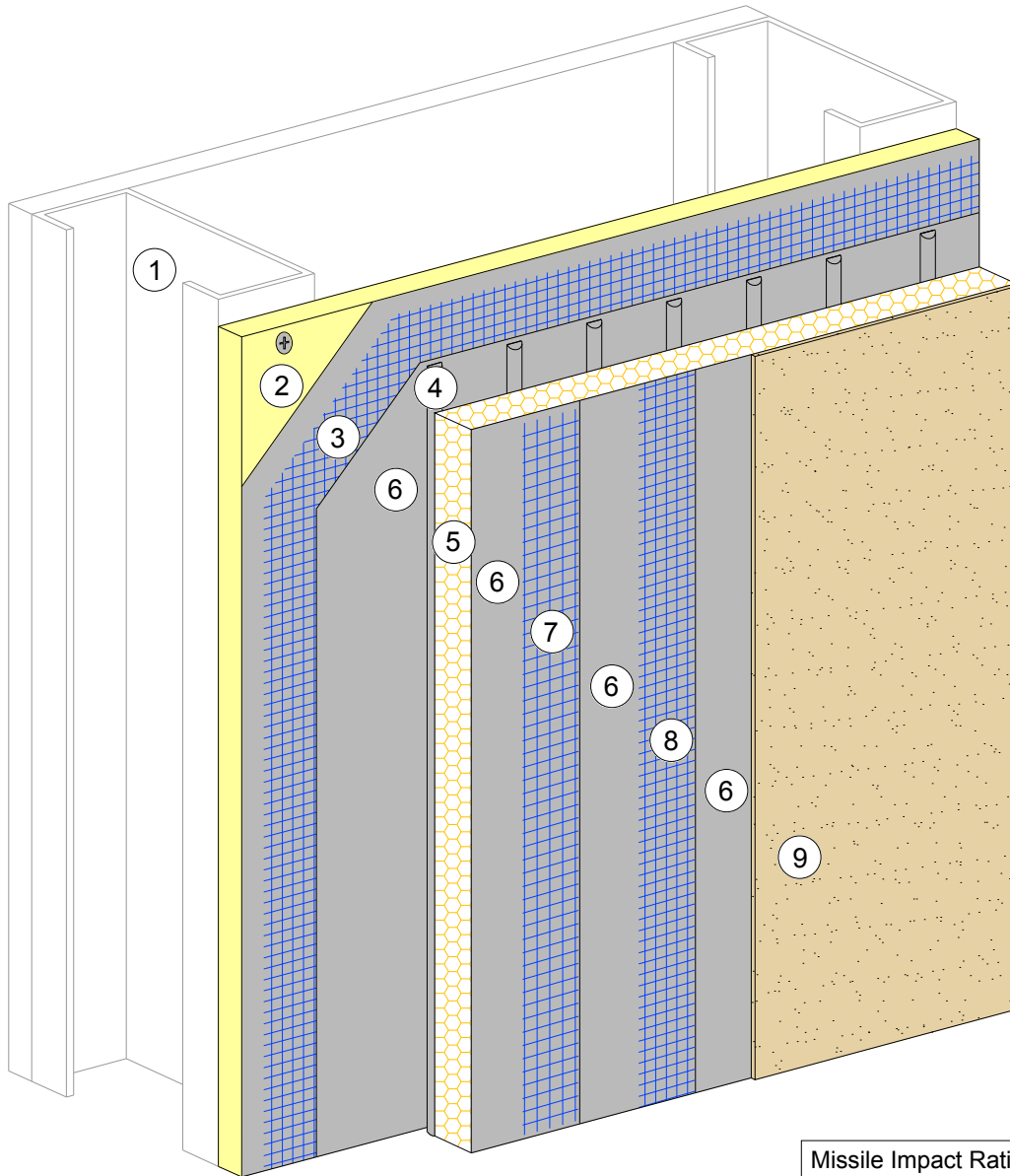
Missile Impact Rating: Large & Small	
Item 3: Reinforcing Mesh	Design Pressure
Panzer 20	±135 psf
Standard Plus	±110 psf

1. MINIMUM 6" X 16 GAUGE STEEL STUDS AT 16" O.C.
2. MINIMUM 5/8" DENS-GLASS GOLD, USG SECUROCK, OR NATIONAL GYPSUM e2XP SHEATHING MEETING ASTM C 1177 FASTENED WITH MINIMUM NO. 6 X 1 1/4" BUGLE HEAD SCREWS SPACED AT 4" O.C.
3. DRYVIT STANDARD PLUS REINFORCING MESH EMBEDDED IN DRYVIT PRIMUS®, GENESIS®, OR GENESIS® DM BASE COAT
4. DRYVIT PRIMUS, GENESIS, OR GENESIS DM ADHESIVE APPLIED IN VERTICAL NOTCHED TROWEL CONFIGURATION TO BACK OF EPS BOARD
5. MINIMUM 1" THICK EXPANDED POLYSTYRENE (EPS) INSULATION BOARD MEETING FBC SECTION 2612
6. DRYVIT PRIMUS, GENESIS, OR GENESIS DM BASE COAT
7. DRYVIT PANZER® 20 REINFORCING MESH (20.5 OZ/SQ YD) EMBEDDED IN DRYVIT BASE COAT
8. DRYVIT STANDARD REINFORCING MESH (4.3 OZ/SQ YD) EMBEDDED IN DRYVIT BASE COAT
9. DRYVIT FINISH
10. FOR FULL NOTICE OF ACCEPTANCE CLICK HERE: [NOA 18-0123.12](#)

The architecture, engineering, and design of the project using the Dryvit products is the responsibility of the project's design professional. All systems must comply with local building codes and standards. This detail is for general information and guidance only and Dryvit specifically disclaims any liability for the use of this detail and for the architecture, design, engineering or workmanship of any project. The project design professional determines, in its sole discretion, whether this detail or a functionally equivalent detail is best suited for the project. Use of a functionally equivalent detail does not violate Dryvit's warranty. This detail is subject to change without notice. Contact Dryvit to ensure you have the most recent version.

©Dryvit Systems, Inc. | Issued: 10/2016





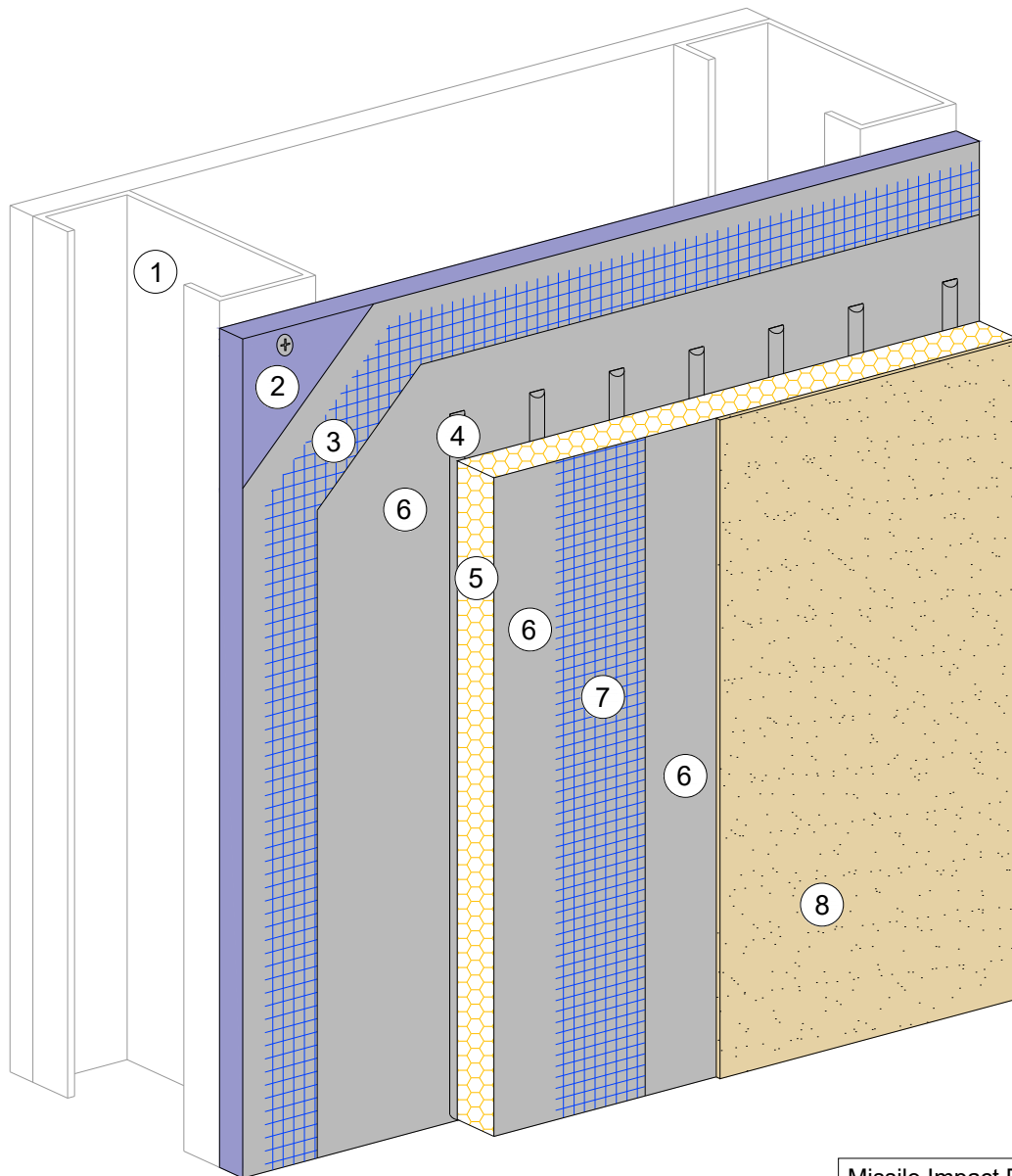
Missile Impact Rating: Large & Small
Design Pressure: ±75 psf

1. MINIMUM 3 5/8" X 18 GAUGE STEEL STUDS AT 16" O.C.
2. MINIMUM 1/2" EXTERIOR GRADE GYPSUM SHEATHING MEETING ASTM C 1396 (FORMERLY ASTM C 79) OR MINIMUM 1/2" DENS-GLASS GOLD, USG SECUROCK, OR NATIONAL GYPSUM e2XP SHEATHING MEETING ASTM C 1177 FASTENED WITH NO. 8 X 1 5/8" WAFER HEAD SCREWS SPACED AT 6" O.C.
3. DRYVIT STANDARD PLUS REINFORCING MESH EMBEDDED IN DRYVIT PRIMUS®, GENESIS®, OR GENESIS® DM BASE COAT
4. DRYVIT PRIMUS, GENESIS, OR GENESIS DM ADHESIVE APPLIED IN VERTICAL NOTCHED TROWEL CONFIGURATION TO BACK OF EPS BOARD
5. MINIMUM 1" THICK EXPANDED POLYSTYRENE (EPS) INSULATION BOARD MEETING FBC SECTION 2612
6. DRYVIT PRIMUS, GENESIS, OR GENESIS DM BASE COAT
7. DRYVIT PANZER® 20 REINFORCING MESH (20.5 OZ/SQ YD) EMBEDDED IN DRYVIT BASE COAT
8. DRYVIT STANDARD REINFORCING MESH (4.3 OZ/SQ YD) EMBEDDED IN DRYVIT BASE COAT
9. DRYVIT FINISH
10. FOR FULL NOTICE OF ACCEPTANCE CLICK HERE: [NOA 17-0807.14](#)

The architecture, engineering, and design of the project using the Dryvit products is the responsibility of the project's design professional. All systems must comply with local building codes and standards. This detail is for general information and guidance only and Dryvit specifically disclaims any liability for the use of this detail and for the architecture, design, engineering or workmanship of any project. The project design professional determines, in its sole discretion, whether this detail or a functionally equivalent detail is best suited for the project. Use of a functionally equivalent detail does not violate Dryvit's warranty. This detail is subject to change without notice. Contact Dryvit to ensure you have the most recent version.

©Dryvit Systems, Inc. | Issued: 11/2017





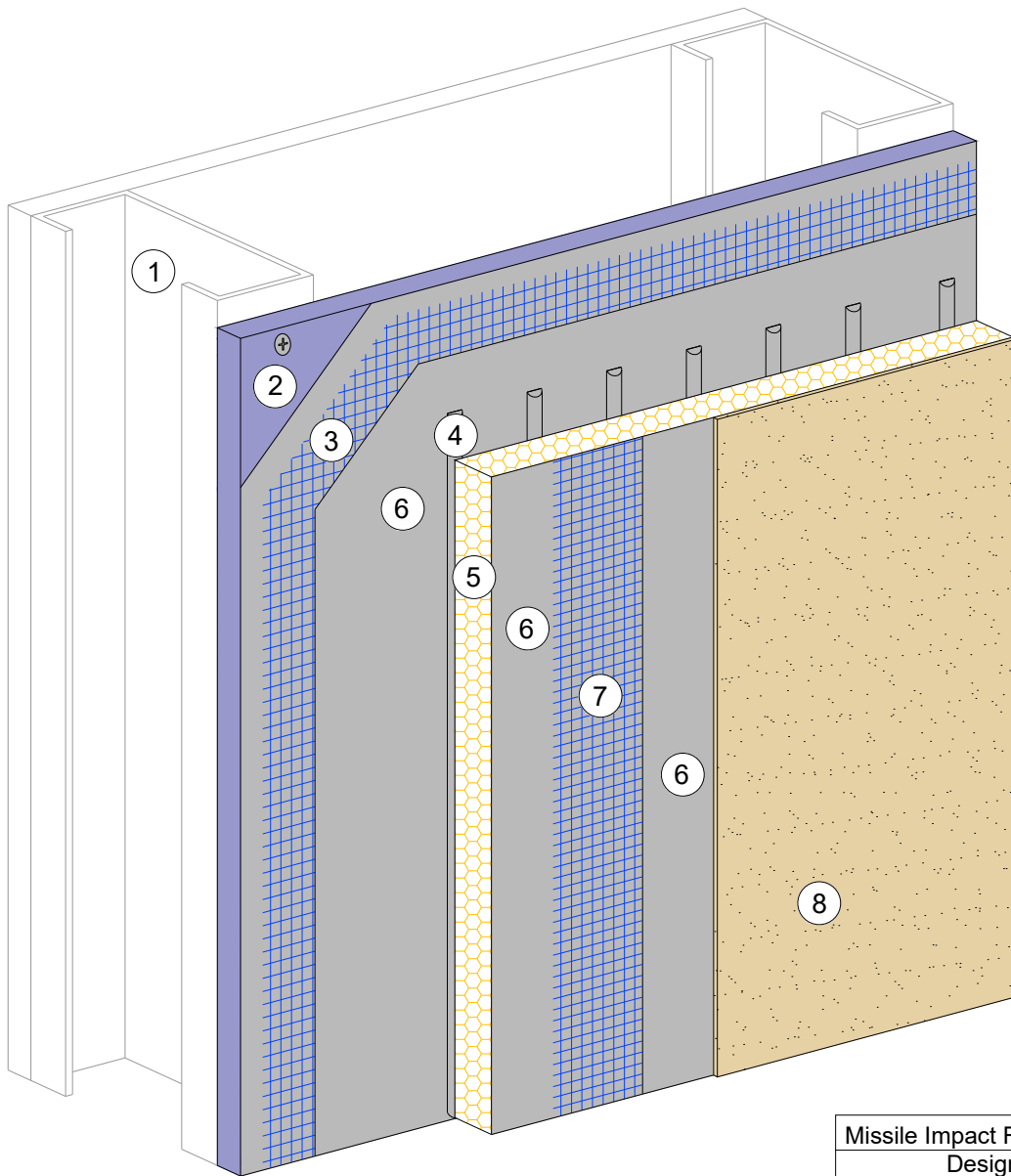
Missile Impact Rating: Large & Small
Design Pressure: ±110 psf

1. MINIMUM 3 5/8" X 18 GAUGE STEEL STUDS AT 16" O.C.
2. MINIMUM 5/8" NATIONAL GYPSUM e²XP SHEATHING FASTENED WITH MINIMUM NO. 6 X 1 1/4" SELF DRILLING SCREWS SPACED 6" O.C.
3. DRYVIT PANZER® 20 REINFORCING MESH (20.5 OZ/SQ YD) EMBEDDED IN DRYVIT PRIMUS®, GENESIS®, OR GENESIS® DM BASE COAT
4. DRYVIT PRIMUS, GENESIS, OR GENESIS DM ADHESIVE APPLIED IN VERTICAL NOTCHED TROWEL CONFIGURATION TO BACK OF EPS BOARD
5. MINIMUM 1" THICK EXPANDED POLYSTYRENE (EPS) INSULATION BOARD MEETING FBC SECTION 2612
6. DRYVIT PRIMUS, GENESIS, OR GENESIS DM BASE COAT
7. DRYVIT STANDARD REINFORCING MESH (4.3 OZ/SQ YD) EMBEDDED IN DRYVIT BASE COAT
8. DRYVIT FINISH
9. FOR FULL NOTICE OF ACCEPTANCE CLICK HERE: [NOA 18-0123.10](#)

The architecture, engineering, and design of the project using the Dryvit products is the responsibility of the project's design professional. All systems must comply with local building codes and standards. This detail is for general information and guidance only and Dryvit specifically disclaims any liability for the use of this detail and for the architecture, design, engineering or workmanship of any project. The project design professional determines, in its sole discretion, whether this detail or a functionally equivalent detail is best suited for the project. Use of a functionally equivalent detail does not violate Dryvit's warranty. This detail is subject to change without notice. Contact Dryvit to ensure you have the most recent version.

©Dryvit Systems, Inc. | Issued: 2/2019



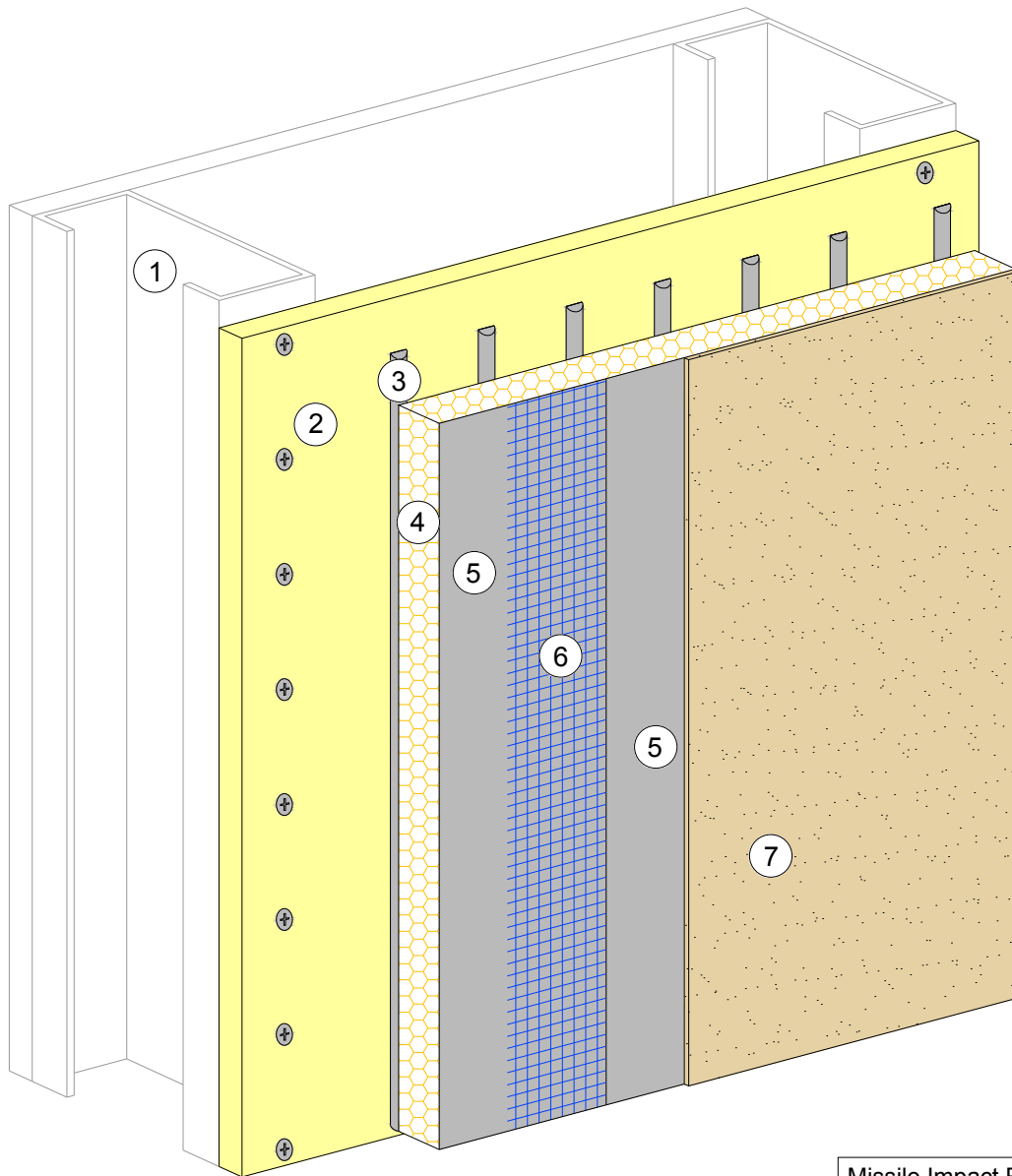


Missile Impact Rating: Large & Small Design Pressure	
6" O.C. Screws	±135 psf
4" O.C. Screws	±155 psf

1. MINIMUM 6" X 18 GAUGE STEEL STUDS AT 16" O.C.
2. MINIMUM 5/8" NATIONAL GYPSUM e²XP SHEATHING FASTENED WITH MINIMUM NO. 6 X 1 1/4" SELF DRILLING SCREWS SPACED IN ACCORDANCE WITH TABLE FOR APPLICABLE DESIGN PRESSURE
3. DRYVIT PANZER® 20 REINFORCING MESH (20.5 OZ/SQ YD) EMBEDDED IN DRYVIT PRIMUS®, GENESIS®, OR GENESIS® DM BASE COAT
4. DRYVIT PRIMUS, GENESIS, OR GENESIS DM ADHESIVE APPLIED IN VERTICAL NOTCHED TROWEL CONFIGURATION TO BACK OF EPS BOARD
5. MINIMUM 1" THICK EXPANDED POLYSTYRENE (EPS) INSULATION BOARD MEETING FBC SECTION 2612
6. DRYVIT PRIMUS, GENESIS, OR GENESIS DM BASE COAT
7. DRYVIT STANDARD REINFORCING MESH (4.3 OZ/SQ YD) EMBEDDED IN DRYVIT BASE COAT
8. DRYVIT FINISH
9. FOR FULL NOTICE OF ACCEPTANCE CLICK HERE: [NOA 18-0123.11](#)

The architecture, engineering, and design of the project using the Dryvit products is the responsibility of the project's design professional. All systems must comply with local building codes and standards. This detail is for general information and guidance only and Dryvit specifically disclaims any liability for the use of this detail and for the architecture, design, engineering or workmanship of any project. The project design professional determines, in its sole discretion, whether this detail or a functionally equivalent detail is best suited for the project. Use of a functionally equivalent detail does not violate Dryvit's warranty. This detail is subject to change without notice. Contact Dryvit to ensure you have the most recent version.
 ©Dryvit Systems, Inc. | Issued: 2/2019





Missile Impact Rating: Small Missile

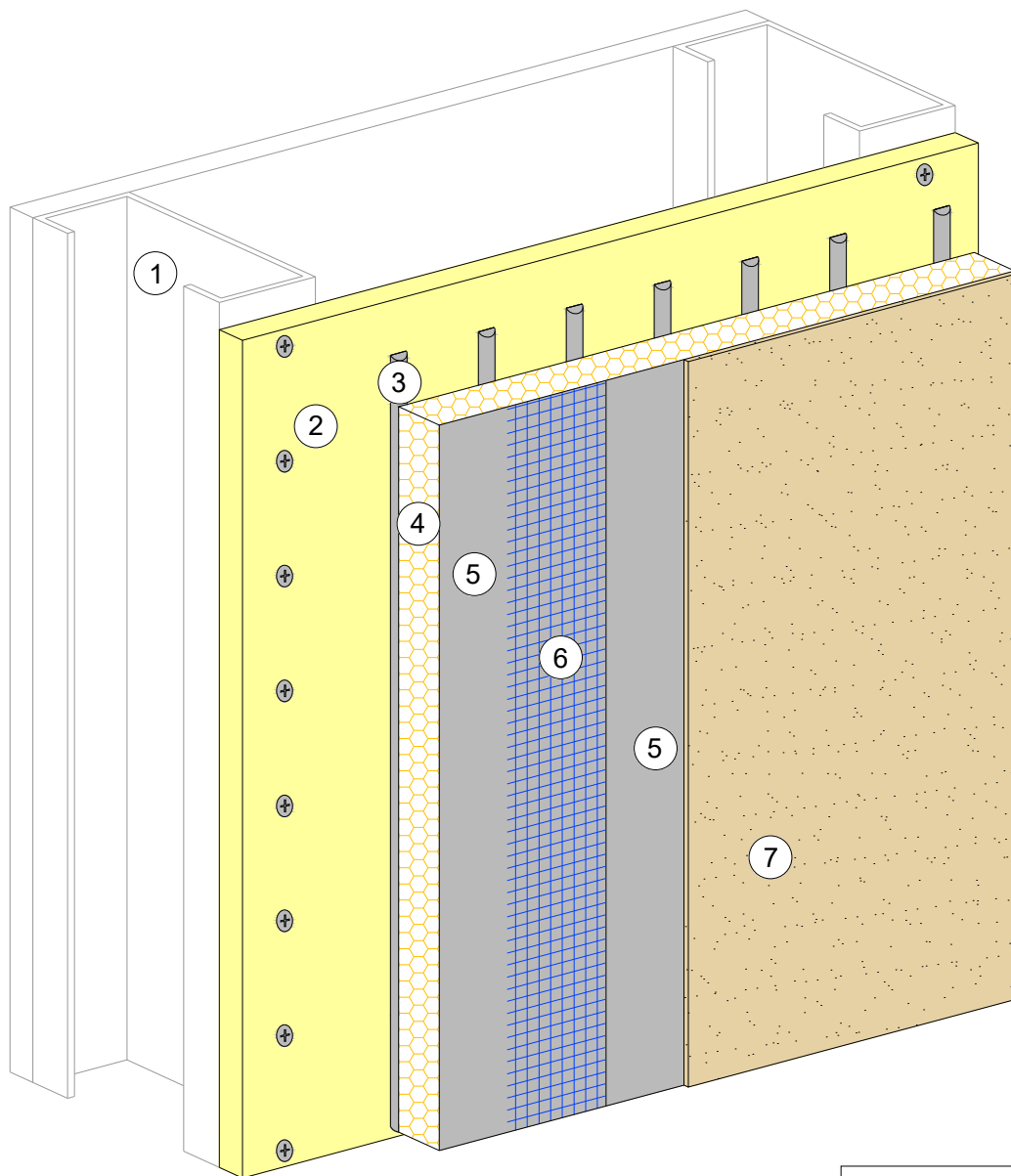
Design Pressure: ±75 psf

1. MINIMUM 3 5/8" X 18 GAUGE STEEL STUDS AT 16" O.C.
2. MINIMUM 1/2" EXTERIOR GRADE GYPSUM SHEATHING MEETING ASTM C 1396 (FORMERLY ASTM C 79) OR 1/2 DENS-GLASS GOLD, USG SECUROCK SHEATHING, MEETING ASTM C 1177 FASTENED WITH MINIMUM NO. 8 X 1 5/8" WAFER HEAD SCREWS SPACED AT 6" O.C.
3. DRYVIT PRIMUS®, GENESIS®, OR GENESIS® DM ADHESIVE APPLIED IN VERTICAL NOTCHED TROWEL CONFIGURATION TO BACK OF EPS BOARD
4. MINIMUM 1" THICK EXPANDED POLYSTYRENE (EPS) INSULATION BOARD MEETING FBC SECTION 2612
5. DRYVIT PRIMUS, GENESIS, OR GENESIS DM BASE COAT
6. DRYVIT STANDARD REINFORCING MESH (4.3 OZ/SQ YD) EMBEDDED IN DRYVIT BASE COAT
7. DRYVIT FINISH
8. FOR FULL NOTICE OF ACCEPTANCE CLICK HERE: [NOA 17-0807.15](#)

The architecture, engineering, and design of the project using the Dryvit products is the responsibility of the project's design professional. All systems must comply with local building codes and standards. This detail is for general information and guidance only and Dryvit specifically disclaims any liability for the use of this detail and for the architecture, design, engineering or workmanship of any project. The project design professional determines, in its sole discretion, whether this detail or a functionally equivalent detail is best suited for the project. Use of a functionally equivalent detail does not violate Dryvit's warranty. This detail is subject to change without notice. Contact Dryvit to ensure you have the most recent version.

©Dryvit Systems, Inc. | Issued: 11/2017





Missile Impact Rating: Small Missile

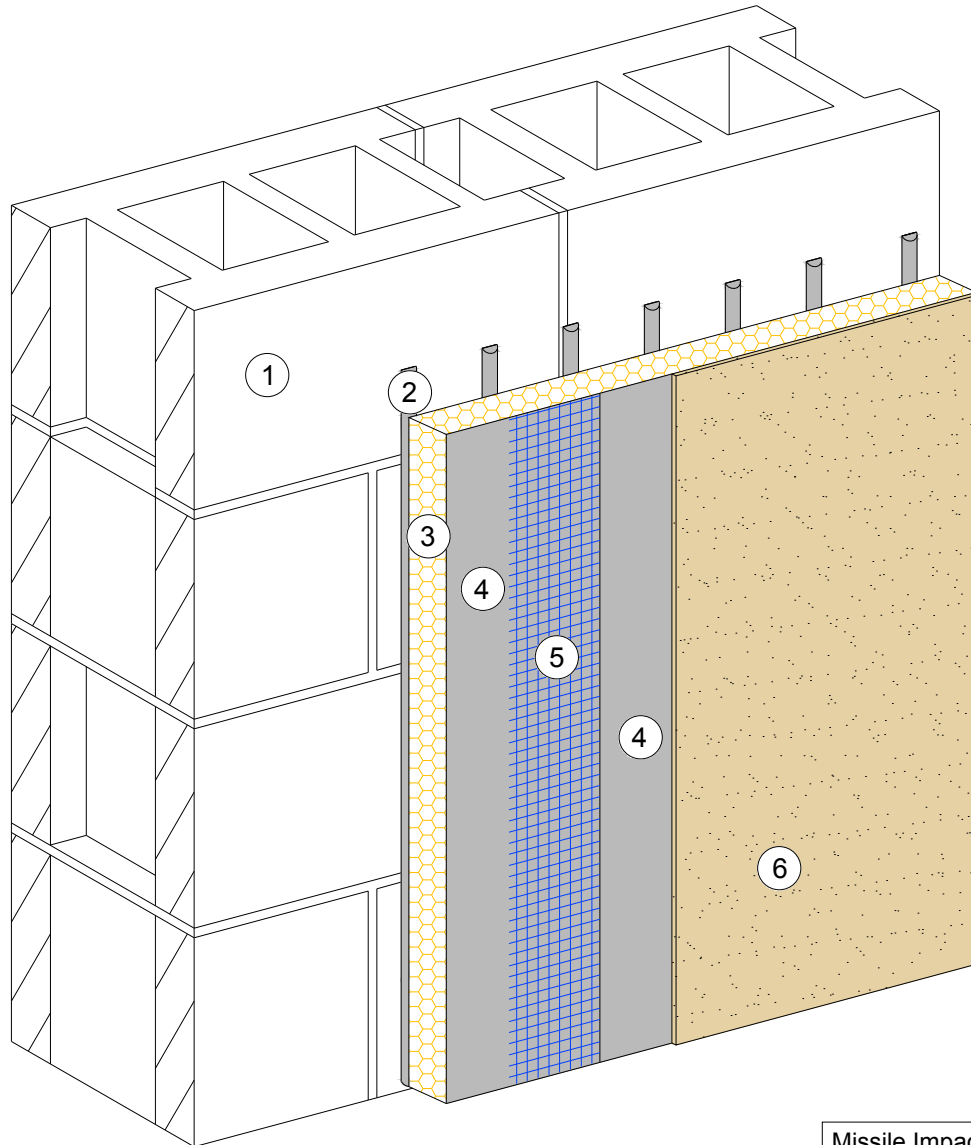
Design Pressure: ±93 psf

1. MINIMUM 3 5/8" X 18 GAUGE STEEL STUDS AT 16" O.C.
2. MINIMUM 5/8" ASTM C 1177 SHEATHING FASTENED WITH NO. 6 X 1 1/4" BUGLE HEAD SCREWS SPACED 6" O.C.
3. DRYVIT PRIMUS®, GENESIS®, OR GENESIS® DM ADHESIVE APPLIED IN VERTICAL NOTCHED TROWEL CONFIGURATION TO BACK OF EPS BOARD
4. MINIMUM 1" THICK EXPANDED POLYSTYRENE (EPS) INSULATION BOARD MEETING FBC SECTION 2612
5. DRYVIT PRIMUS, GENESIS, OR GENESIS DM BASE COAT
6. DRYVIT STANDARD REINFORCING MESH (4.3 OZ/SQ YD) EMBEDDED IN DRYVIT BASE COAT
7. DRYVIT FINISH
8. FOR FULL NOTICE OF ACCEPTANCE CLICK HERE: [NOA 18-0123.09](#)

The architecture, engineering, and design of the project using the Dryvit products is the responsibility of the project's design professional. All systems must comply with local building codes and standards. This detail is for general information and guidance only and Dryvit specifically disclaims any liability for the use of this detail and for the architecture, design, engineering or workmanship of any project. The project design professional determines, in its sole discretion, whether this detail or a functionally equivalent detail is best suited for the project. Use of a functionally equivalent detail does not violate Dryvit's warranty. This detail is subject to change without notice. Contact Dryvit to ensure you have the most recent version.

©Dryvit Systems, Inc. | Issued: 2/2019





Missile Impact Rating: Large & Small

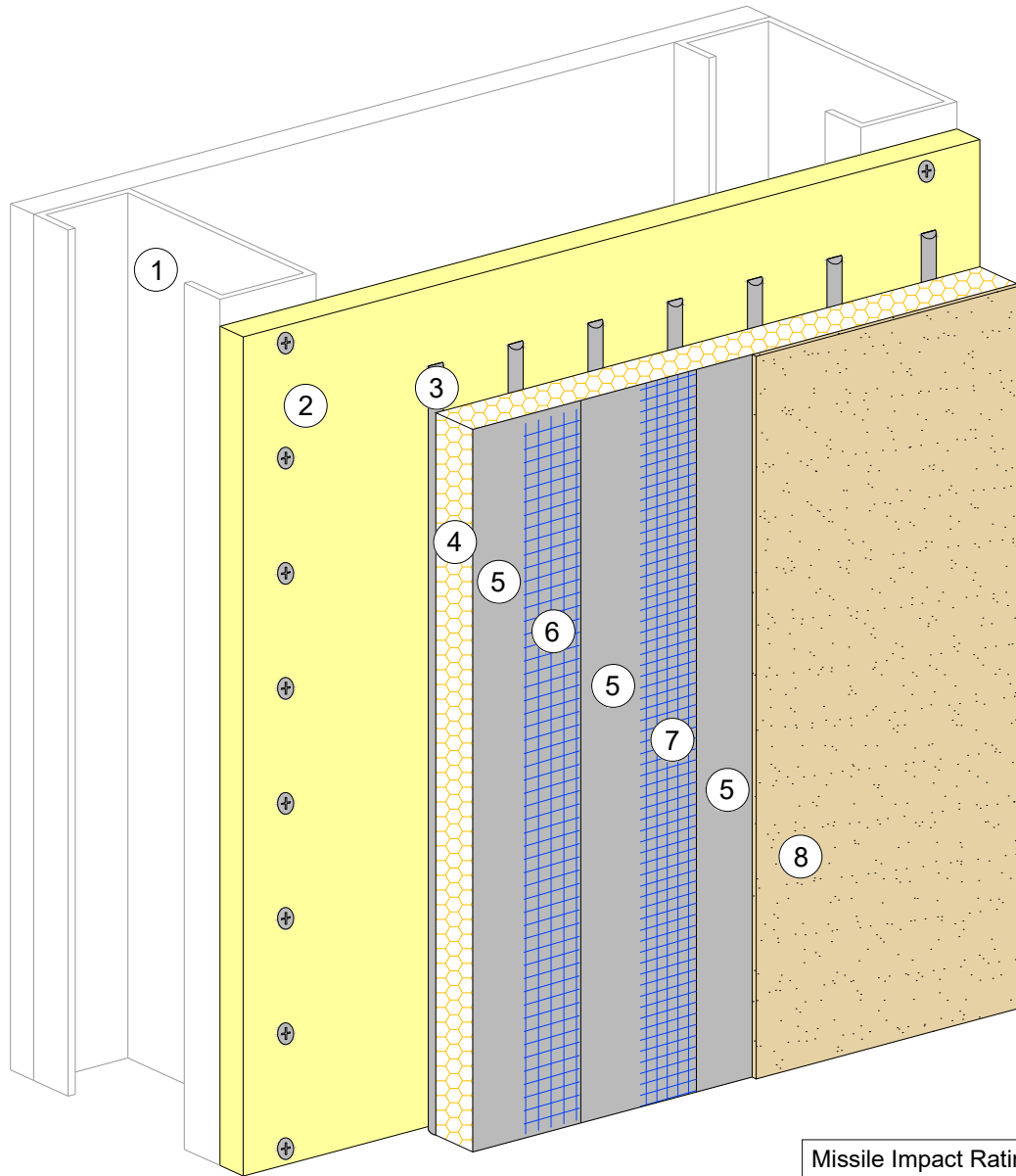
Design Pressure: ±160 psf

1. CONCRETE WALL (ACI 318) CONCRETE MASONRY STRUCTURE (ASTM C90) AND TYPE S MORTAR (ASTM C270) COMPLYING WITH S.F.B.C.
2. DRYVIT PRIMUS®, GENESIS®, OR GENESIS® DM ADHESIVE APPLIED IN VERTICAL NOTCHED TROWEL CONFIGURATION TO BACK OF EPS BOARD
3. MINIMUM 1" THICK EXPANDED POLYSTYRENE (EPS) INSULATION BOARD MEETING FBC SECTION 2612
4. DRYVIT PRIMUS, GENESIS, OR GENESIS DM BASE COAT
5. DRYVIT STANDARD REINFORCING MESH (4.3 OZ/SQ YD) EMBEDDED IN DRYVIT BASE COAT
6. DRYVIT FINISH
7. FOR FULL NOTICE OF ACCEPTANCE CLICK HERE: [NOA 17-0807.13](#)

The architecture, engineering, and design of the project using the Dryvit products is the responsibility of the project's design professional. All systems must comply with local building codes and standards. This detail is for general information and guidance only and Dryvit specifically disclaims any liability for the use of this detail and for the architecture, design, engineering or workmanship of any project. The project design professional determines, in its sole discretion, whether this detail or a functionally equivalent detail is best suited for the project. Use of a functionally equivalent detail does not violate Dryvit's warranty. This detail is subject to change without notice. Contact Dryvit to ensure you have the most recent version.

©Dryvit Systems, Inc. | Issued: 11/2017





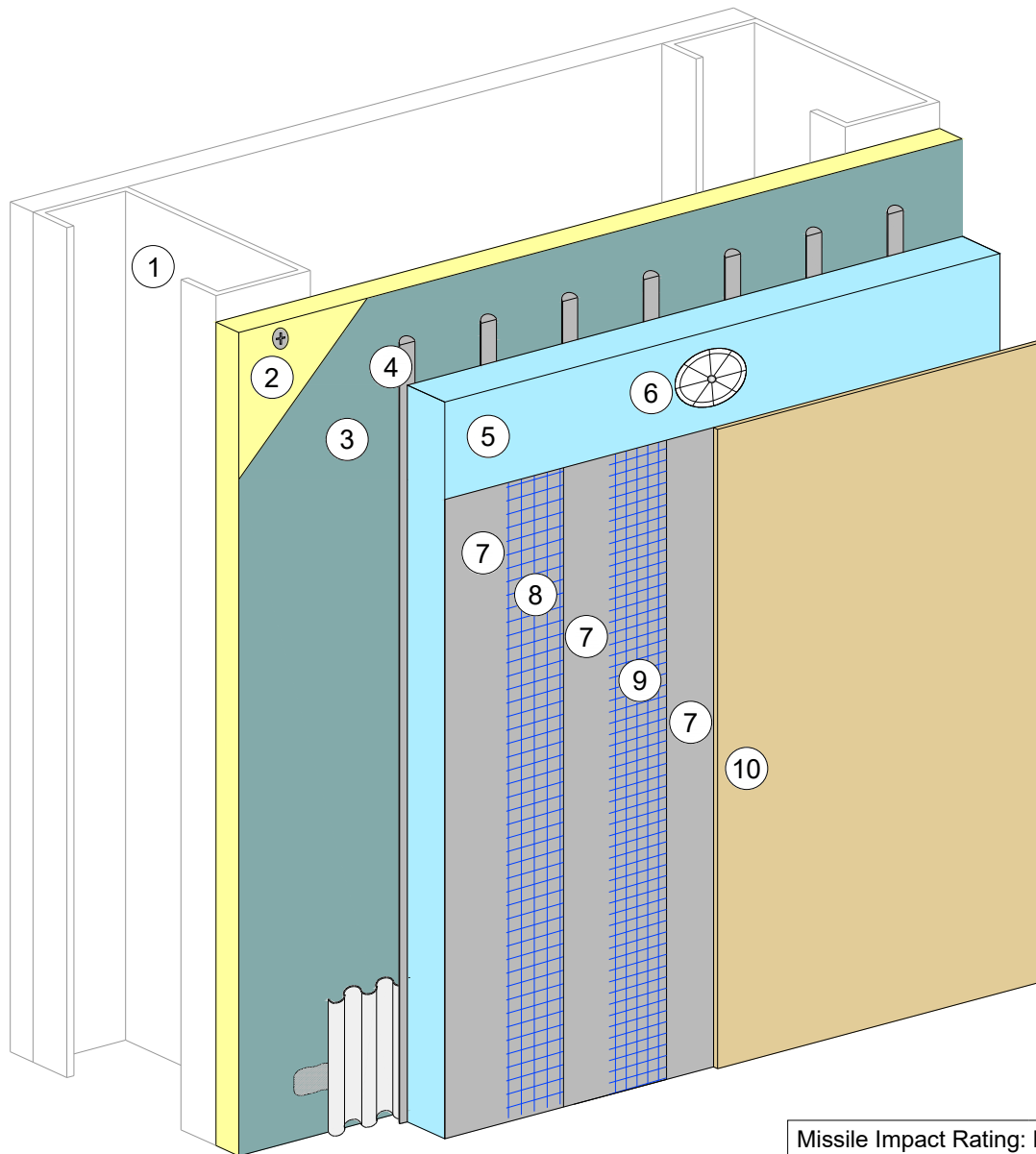
Missile Impact Rating: Large & Small
Design Pressure: ±70 psf

1. 3 5/8" X 18 GAUGE STEEL STUDS AT 16" O.C.
2. 1/2" ASTM C 1177 SHEATHING FASTENED WITH NO. 6 X 1 1/4" SELF DRILLING SCREWS SPACED 6" O.C.
3. DRYVIT PRIMUS®, GENESIS®, OR GENESIS® DM ADHESIVE APPLIED IN VERTICAL NOTCHED TROWEL CONFIGURATION TO BACK OF EPS BOARD
4. MINIMUM 1" THICK EXPANDED POLYSTYRENE (EPS) INSULATION BOARD MEETING FBC SECTION 2612, ADHERED WITH DRYVIT GENESIS ADHESIVE
5. DRYVIT PRIMUS, GENESIS, OR GENESIS DM BASE COAT
6. DRYVIT PANZER® 20 REINFORCING MESH (20.5 OZ/SQ YD) EMBEDDED IN DRYVIT BASE COAT
7. DRYVIT STANDARD REINFORCING MESH (4.3 OZ/SQ YD) EMBEDDED IN DRYVIT BASE COAT
8. DRYVIT FINISH
9. FOR FULL NOTICE OF ACCEPTANCE CLICK HERE: [NOA 19-0808.01](#)

The architecture, engineering, and design of the project using the Dryvit products is the responsibility of the project's design professional. All systems must comply with local building codes and standards. This detail is for general information and guidance only and Dryvit specifically disclaims any liability for the use of this detail and for the architecture, design, engineering or workmanship of any project. The project design professional determines, in its sole discretion, whether this detail or a functionally equivalent detail is best suited for the project. Use of a functionally equivalent detail does not violate Dryvit's warranty. This detail is subject to change without notice. Contact Dryvit to ensure you have the most recent version.

©Dryvit Systems, Inc. | Issued: 05/2020





Missile Impact Rating: Large & Small
Design Pressure: ±93 psf

1. MINIMUM 3 5/8" X 18 GAUGE STEEL STUDS AT 16" O.C.
2. MINIMUM 5/8" ASTM C 1177 SHEATHING FASTENED WITH MINIMUM NO. 6 X 1 1/4" SELF DRILLING SCREWS SPACED 6" O.C.
3. DRYVIT BACKSTOP® NT
4. DRYVIT GENESIS® ADHESIVE APPLIED IN VERTICAL NOTCHED TROWEL CONFIGURATION TO BACK OF EPS BOARD
5. MINIMUM 1" THICK EXTRUDED POLYSTYRENE (XPS) INSULATION BOARD MEETING FBC SECTION 2612
6. WIND-LOCK® WIND-DEVIL 2 FASTENERS- 4 PER 2'-0" X 4'-0" BOARD
7. DRYVIT GENESIS BASE COAT
8. DRYVIT PANZER® 20 REINFORCING MESH (20.5 OZ/SQ YD) EMBEDDED IN DRYVIT BASE COAT
9. DRYVIT STANDARD REINFORCING MESH (4.3 OZ/SQ YD) EMBEDDED IN DRYVIT BASE COAT
10. DRYVIT FINISH
11. PANZER 20 MESH IS NOT REQUIRED ON WALL AREAS THAT ARE GREATER THAN 30 FEET ABOVE GRADE. ONE LAYER OF STANDARD OR STANDARD PLUS (OUTSULATION X) REINFORCING MESH IS REQUIRED ABOVE 30 FEET UNLESS SPECIFIED OTHERWISE BY THE DESIGN PROFESSIONAL.
12. FOR FULL NOTICE OF ACCEPTANCE CLICK HERE: [NOA 17-0807.18](#)

The architecture, engineering, and design of the project using the Dryvit products is the responsibility of the project's design professional. All systems must comply with local building codes and standards. This detail is for general information and guidance only and Dryvit specifically disclaims any liability for the use of this detail and for the architecture, design, engineering or workmanship of any project. The project design professional determines, in its sole discretion, whether this detail or a functionally equivalent detail is best suited for the project. Use of a functionally equivalent detail does not violate Dryvit's warranty. This detail is subject to change without notice. Contact Dryvit to ensure you have the most recent version.

©Dryvit Systems, Inc. | Issued: 9/2020

