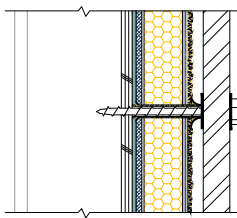
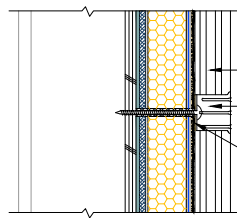


SHUTTER ATTACHMENT



DOWNSPOUT ATTACHMENT



DOWNSPOUT

DOWNSPOUT STRAP

APPROVED TREMCO CPG SEALANT OR APPROVED EQUIVALENT BETWEEN SYSTEM AND STRAP

NOTE:

1. DRYVIT RECOMMENDS THAT GROUND FLOOR APPLICATIONS AND ALL FACADES EXPOSED TO ABNORMAL STRESS, HIGH TRAFFIC, OR DELIBERATE IMPACT HAVE THE BASE COAT REINFORCED WITH PANZER® MESH PRIOR TO STANDARD OR STANDARD PLUS MESH. LOCATION OF HIGH IMPACT ZONES SHOULD BE INDICATED ON CONTRACT DRAWINGS.
2. PERIMETER OF PIPE SLEEVE IS SEALED TO PREVENT WATER ENTRY INTO WALL.
3. DRYVIT GENESIS® OR GENESIS DM BASE COAT IS REQUIRED FOR MECHANICALLY FASTENED SYSTEMS 1-3.
4. FASTENERS ARE NOT REQUIRED FOR SYSTEMS 4 OR 5.
5. PROVIDE BLOCKING SECURED TO FRAMING WHEN FASTENING BETWEEN STUDS OR WHEN SECURING THROUGH NON-STRUCTURAL SUBSTRATE.

*The architecture, engineering, and design of the project using the Dryvit and Tremco products are the responsibility of the project's design professional. All products and systems must comply with local building codes and standards. This detail is for general information and guidance only and Dryvit and Tremco specifically disclaims any liability for the use of this detail. The project design professional determines, in its sole discretion, whether this detail or a functionally equivalent detail is best suited for the project. This detail is subject to change without notice. Contact Dryvit and Tremco to ensure you have the most recent version.*

Outsulation® RMD System™



Dryvit Technical Support: 800-556-7752

Detail: Shutter & Downspout Attachment

Drawn by: HDE

Checked by: KK

Scale: NTS

Date: 5/19/2023

File Name:

O-RMD 41



Construction Products Group

www.tremcocpg.com