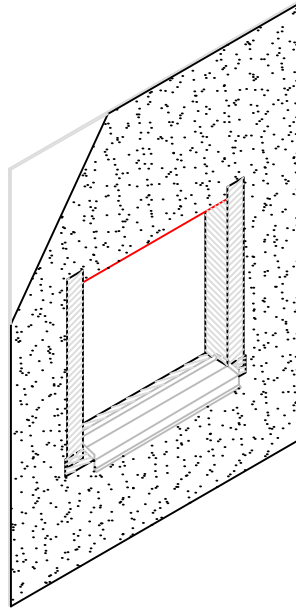
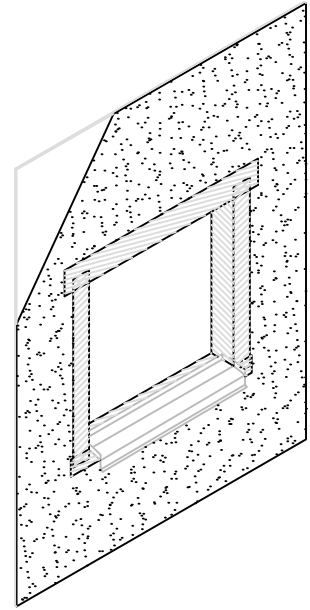


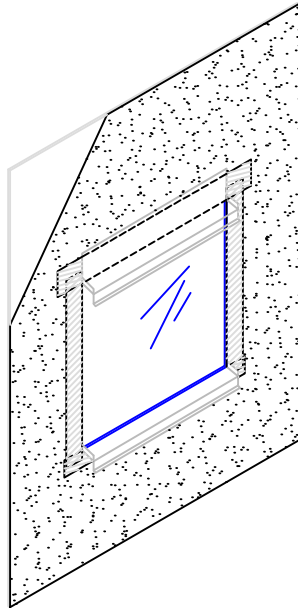
**STEP 1:** APPLY DRYVIT BACKSTOP\*NT™ TO THE FACE OF THE WALL AND INSTALL DRYVIT FLASHING TAPE AT SILL AND LAP ONTO JAMB



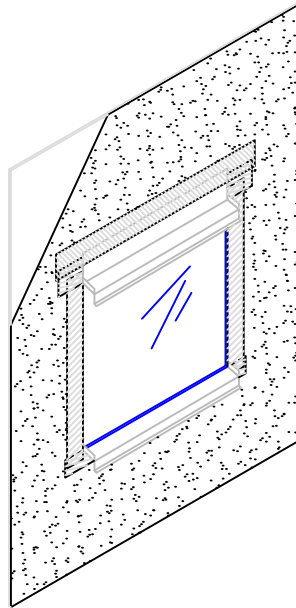
**STEP 2:** INSTALL SILL PAN FLASHING. APPLY DRYVIT FLASHING TAPE™ AT JAMBS AND LAP ONTO UPTURNED EDGE OF PAN FLASHING



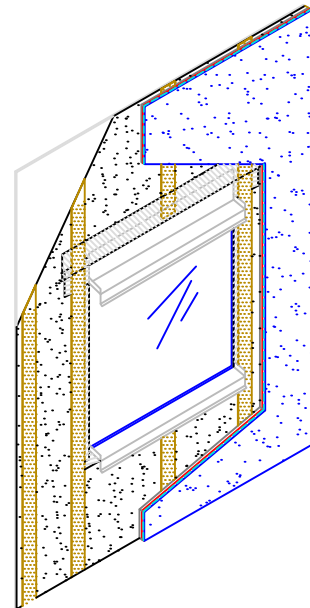
**STEP 3:** INSTALL HEAD FLASHING TAPE LAPPING OVER JAMB FLASHING



**STEP 4:** INSTALL WINDOW UNIT AND HEAD FLASHING



**STEP 5:** APPLY FLASHING TAPE OVER METAL FLASHING AT WINDOW HEAD



**STEP 6:** INSTALL MD SPACERS OR EQUIVALENT, CEMENT BOARD AND COATINGS

## Cement Board MD Finish System™

## Opening Preparation for Storefront Window

### NOTE:

- 1: FLASHING TAPE SHALL EXTEND TO INSIDE FACE OF FRAMING
- 2: SHEET TYPE WATER RESISTIVE MEMBRANES SHALL BE INSTALLED IN A WEATHER BOARD FASHION
- 3: DRYVIT AQUAFASH® SYSTEM MAY BE USED IN LIEU OF DRYVIT FLASHING TAPE WHEN DRYVIT BACKSTOP NT IS USED AS THE WATER-RESISTIVE BARRIER

The architecture, engineering, and design of the project using the Dryvit products is the responsibility of the project's design professional. All systems must comply with local building codes and standards. This detail is for general information and guidance only and Dryvit specifically disclaims any liability for the use of this detail and for the architecture, design, engineering or workmanship of any project. The project design professional determines, in its sole discretion, whether this detail or a functionally equivalent detail is best suited for the project. Use of a functionally equivalent detail does not violate Dryvit's warranty. This detail is subject to change without notice. Contact Dryvit to ensure you have the most recent version.