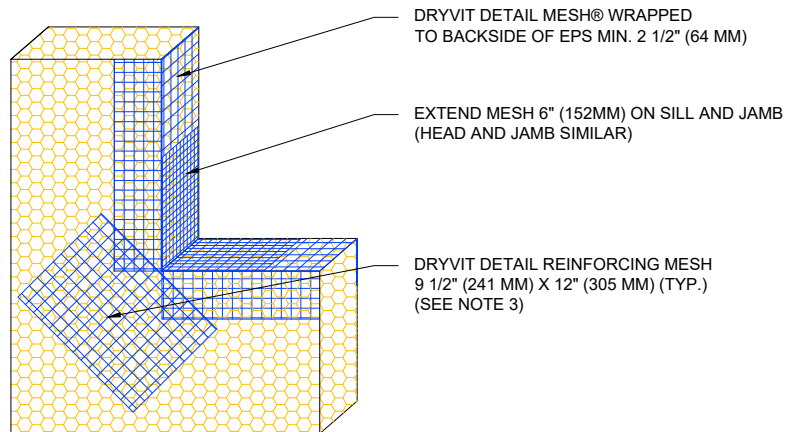


EPS INSULATION  
(SEE NOTE 2)



DRYVIT DETAIL MESH® WRAPPED  
TO BACKSIDE OF EPS MIN. 2 1/2" (64 MM)

EXTEND MESH 6" (152MM) ON SILL AND JAMB  
(HEAD AND JAMB SIMILAR)



DRYVIT DETAIL REINFORCING MESH  
9 1/2" (241 MM) X 12" (305 MM) (TYP.)  
(SEE NOTE 3)

**NOTE:**

1. DRYVIT RECOMMENDS THAT GROUND FLOOR APPLICATIONS AND ALL FACADES EXPOSED TO ABNORMAL STRESS, HIGH TRAFFIC, OR DELIBERATE IMPACT HAVE THE BASE COAT REINFORCED WITH PANZER® MESH PRIOR TO STANDARD OR STANDARD PLUS MESH. LOCATION OF HIGH IMPACT ZONES SHOULD BE INDICATED ON CONTRACT DRAWINGS.
2. LOCATE INSULATION BOARDS SUCH THAT BOARD EDGES DO NOT ALIGN WITH CORNERS OF PENETRATION.
3. APPLY A PIECE OF 9 1/2" (241 MM) X 12" (305 MM) DETAIL REINFORCING MESH DIAGONALLY AT EACH CORNER.
4. FASTENERS ARE REQUIRED FOR SYSTEMS 1-3.

*The architecture, engineering, and design of the project using the Dryvit and Tremco products are the responsibility of the project's design professional. All products and systems must comply with local building codes and standards. This detail is for general information and guidance only and Dryvit and Tremco specifically disclaims any liability for the use of this detail. The project design professional determines, in its sole discretion, whether this detail or a functionally equivalent detail is best suited for the project. This detail is subject to change without notice. Contact Dryvit and Tremco to ensure you have the most recent version.*

**Outsulation® RMD System™**

 Dryvit Technical Support: 800-556-7752	Detail: EPS Penetration at Wall Penetrations				File Name:	
	Drawn by: HDE	Checked by: CS	Scale: NTS	Date: 5/19/2023	O-RMD 14	
 Construction Products Group						