



# RENOVATION SOLUTIONS FROM DRYVIT



**Jackson Towers**  
Harrisburg, PA

Complete renovation  
of 1970's-era HUD housing

**CB&E Office Building**  
Chesterfield, MO

Dramatic transformation into  
first-class office space



Before



After

[dryvit.com/cbe](http://dryvit.com/cbe)

**YOUR BUILDING IS A LARGE FINANCIAL ASSET** – but a visually outdated and energy inefficient building impacts curb appeal, diminishes comfort for occupants, and reduces financial return. That’s where ReVyvit by Dryvit comes in. It’s the exterior wall renovation solution that can revive your building by improving aesthetics, optimizing performance and substantially increasing your ROI – all without ever closing the doors!

Projects will vary in scope, complexity and budgets. Whether the scope of work is a simple recoat or a complete tear off and re clad, Dryvit has the expertise and envelope solution package for your building.

## REASONS TO RENOVATE YOUR BUILDING EXTERIOR

- Poor energy performance/  
high energy costs
- Leaks at openings
- Cracks in the exterior  
cladding/skin
- Poor curb appeal
- Tenant or brand change
- Building code compliance

## BENEFITS OF RENOVATING WITH A DRYVIT CI SYSTEM

- Lower heating and  
cooling costs
- Occupant comfort
- Enhanced competitiveness  
with surrounding buildings
- Improved occupancy  
percentage and rental rates
- Increased building value



**Isringhausen Imports**  
Springfield, IL

Complete renovation of exterior to an attractive Custom Brick™ exterior



Before



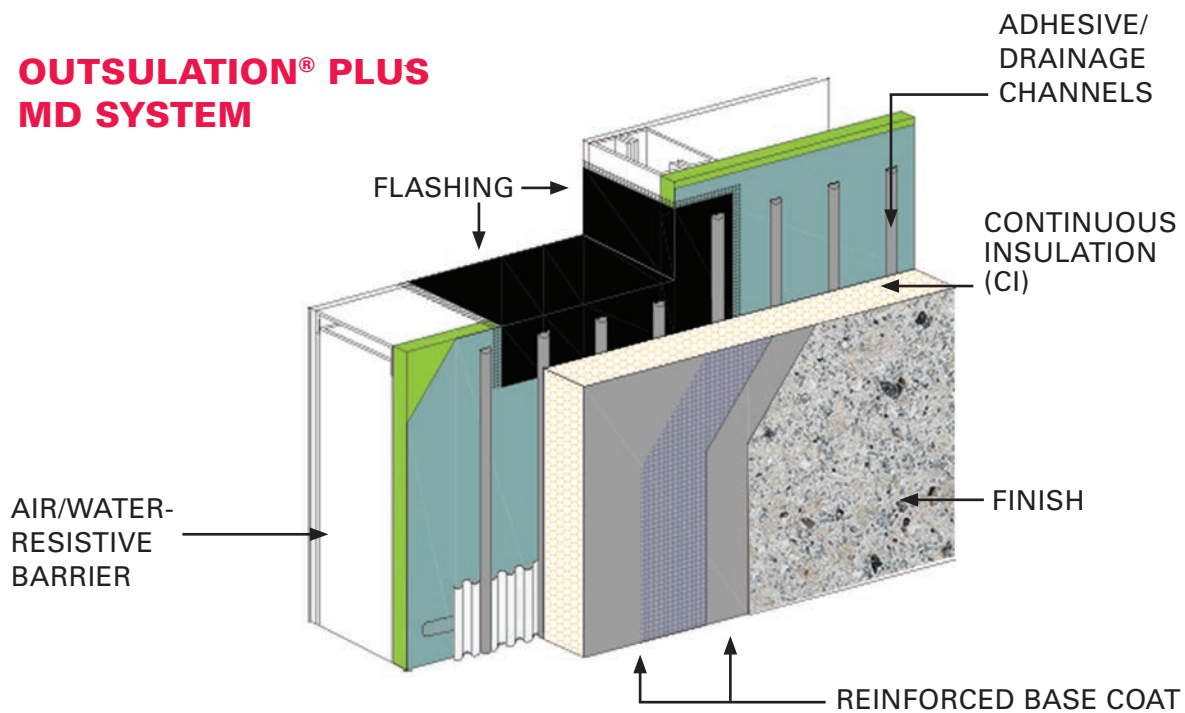
After

[dryvit.com/isringhausen](http://dryvit.com/isringhausen)

## THE CI SOLUTION

Wrapping your building in continuous insulation (CI) dramatically improves R-value and mitigates air infiltration, which increases energy efficiency. Framing materials such as steel and wood provide thermal breaks in any wall assembly. Mass wall structures, such as concrete, precast and masonry are also notoriously poor insulators. Recent changes to the IBC and IECC model codes and the ASHRAE Standards have resulted in many states updating their local building codes to require the use of CI. Outsulation® systems, the leading CI systems since 1969, combine an air/water-resistive barrier, CI, a reinforced lamina and a vast array of finishes – all in one tested, warranted system.

## OUTSULATION® PLUS MD SYSTEM





## WHERE IT ALL STARTS:

Dryvit can provide you lists of local third-party inspectors, forensic engineers, energy analysis/modeling resources and qualified contractors that can identify the appropriate products for your project. Dryvit has a dedicated National Renovation Management team that brings years of experience to assist you with your project.

Identifying the issues – Assessment / Inspection. Any renovation project starts with developing an accurate scope of the work. Experts in the area of building envelope forensics and engineering should assess, review and develop a complete scope of work that includes, but is not limited to: existing cladding condition, moisture intrusion potential, sealant degradation, damaged or deteriorated flashing, wall damage, expansion joints, energy efficiency, air infiltration and integrations of other wall components. Dryvit can facilitate connections between owners and these valuable experts.

Financing a major renovation can be a challenge, but you may qualify for a program called PACE (Property Assessed Clean Energy), a simple and effective way to finance energy-efficient upgrades such as a Dryvit CI Outsulation® system and other improvements such as HVAC, lighting, or solar upgrades. PACE can provide up to 100% financing upfront for project costs and offers long-term repayment (up to 20 years), making projects cash-flow positive and buildings more sustainable. Consult your local PACE program for details or ask a Dryvit specialist for an introduction. Read more at [pacenation.us](http://pacenation.us).



Regardless of your ultimate scope of work, ReVyvit by Dryvit offers a wide range of products, systems and finishes that provide a long term, cost effective solution. The chart below shows typical wall assemblies and the associated ReVyvit by Dryvit options.

	WALL/SUBSTRATE TYPES					REVVIT BY DRYVIT™ SOLUTION	REVVIT BY DRYVIT™ PROVIDES
	BRICK MASONRY	STUCCO	WOOD	CONCRETE CIP/CMU	EIFS		
COATINGS & FINISHES	X	X	X	X	X	<b>ReVyvit™ Solution 1</b> <i>Coatings</i> – Weatherlastic® Smooth (an elastomeric coating), Demandit® (a high performance acrylic paint in smooth and sanded) and HDP™ (a hydrophobic paint that repels water).	<b>Recoating of existing finish</b> Restores or recolors existing finish.
	X	X		X	X	<b>ReVyvit™ Solution 2</b> <i>Direct Finish Systems Over Non-EIFS</i> – Genesis® base coat and finish or Genesis base coat, reinforcing mesh and finish.	<b>New finish over existing exterior</b> Leveling coat, with or without mesh, and a finish (options include acrylic, elastomeric, and hydrophobic).
CI SYSTEM	X	X	X	X	X	<b>ReVyvit™ Solution 3ci (continuous insulation)</b> <i>Overclad</i> – using an Outsulation® system	<b>Overclad using an Outsulation® system</b> Provides a multi-component system that includes ci, impact resistance and a new, attractive finish, meeting current energy and building codes.
	X	X	X	X	X	<b>ReVyvit™ Solution 4ci (continuous insulation)</b> <i>Remove &amp; Replace</i> – re-clad with an Outsulation® system	<b>Remove existing cladding and replace it with an Outsulation® system</b> Provides a multi-component system that includes an air/water resistive barrier, ci, impact resistance and a new, attractive finish, meeting current energy and building codes.
	X	X	X	X	X	<b>ReVyvit™ Solution 5ci (continuous insulation)</b> <i>Overclad – with Fedderlite® or Metalite® Panels</i>	<b>Overclad using a panelized Outsulation® system</b> Provides for the use of prefabricated panels using either ReVyvit 3ci or 4ci. Prefabrication can have significant advantages for some renovation projects.
RESTORATION OF EXISTING EIFS					X	<b>ReVyvit™ Solution 6</b> <i>Restore an EIFS wall</i>	<b>Renew or restore an existing EIFS</b> Specifically designed products for EIF systems to optimize performance. Eligible for renewed system warranty when Solution 6 is used on buildings with an Outsulation® system.



**Tremco Corporate Headquarters**  
Beachwood, OH

TerraNeo finish over  
Ousulation® Plus MD System  
contributed to this whole  
building, LEED Gold renovation



Before

After



[dryvit.com/tremco](http://dryvit.com/tremco)



**TerraNeo®**  
Serengeti

## GET STARTED TODAY!

Dryvit can connect you with local third-party inspectors, forensic engineers, energy analysis/modeling resources and qualified contractors that can identify the appropriate products for your project. Dryvit has a dedicated National Renovation Management team that brings years of experience to assist you with your project. Contact us to revive your building at: **800-556-7752** extension 9, or email us at [renovations@dryvit.com](mailto:renovations@dryvit.com).

## VENEERS



Seamless Stone



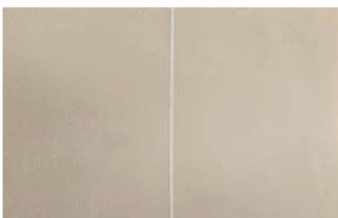
Traditional Plaster  
Renders



Old World or "Aged"  
Plaster



Metal Panel Effects



Limestone



Brick



Dryvit Systems, Inc.  
One Energy Way  
West Warwick, RI 02893  
401-822-4100  
[dryvit.com](http://dryvit.com)

Information contained in this brochure conforms to the standard detail recommendations and specifications for the installation of Dryvit Systems, Inc. products as of the date of publication of this document and is presented in good faith. Dryvit Systems, Inc. assumes no liability, expressed or implied, as to the architecture, engineering or workmanship of any product. To ensure that you are using the latest, most complete information, contact Dryvit Systems, Inc.

© Dryvit Systems, Inc. 2016  
Printed in U.S.A. R2: 8-11-17  
DS211