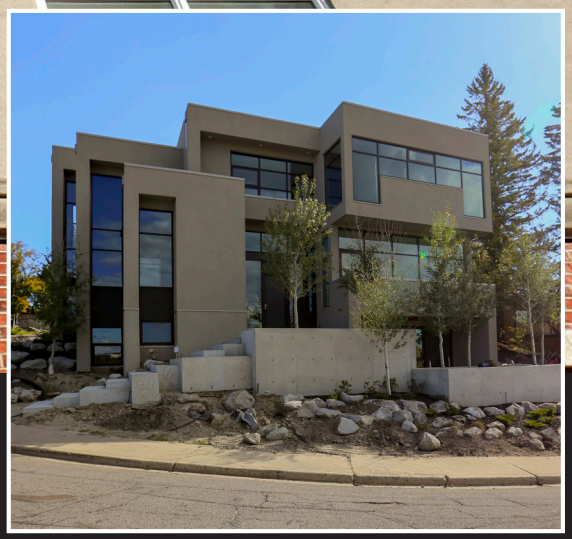




**SHIELDIT™ PROGRAM
FOR PROTECTION OF EIFS
FROM WOODPECKERS**





Retrofit with ShieldIt



New construction with ShieldIt

GET PROTECTION FROM WOODPECKERS AND INCREASED IMPACT RESISTANCE FOR EXTERIOR INSULATION AND FINISH SYSTEMS

A solution for warding off woodpeckers and providing greater impact resistance to EIFS, by utilizing a proprietary composite base coat system.

The combination of the two ShieldIt Base Coat layers changes the surface characteristics to deter woodpeckers from pecking their way through the lamina in new and existing EIFS assemblies. This composite layer will increase the point-impact resistance of the lamina, and can also be used in existing areas where Dryvit's high impact resistant Panzer® reinforcing mesh cannot be incorporated, such as architectural profiles, trims, etc.

WHAT IS THE SHIELDIT ADVANTAGE?

**Over 175x
Point Impact
Resistance**

WHAT DO YOU GET WITH DRYVIT'S SHIELDIT?

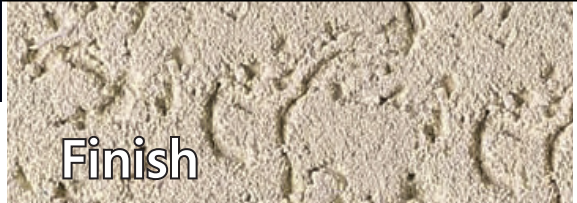
- Composite base coat system that provides additional point-impact resistance
- Adaptable for retrofit of existing EIFS or new Dryvit Outsulation®
- Support from the industry's leading brand
- Manufacturing in Canada compliant with ISO 9001 and 14001 standards
- Nationwide distribution network



1st Coat (Grey)



2nd Coat (White)



Finish



STEPS FOR SHIELDIT



| | |
|------------------|--|
| CONCEPT | Before applying the ShieldIt Base Coat layers on an existing EIFS lamina or a new Dryvit Outsulation system, consult with the local Authority having Jurisdiction, then develop drawings and details that suit your project. |
| RETROFIT | The EIFS lamina must be in good serviceable condition with reinforcing mesh totally embedded in the EIFS base coat. At locations where there is damage to the existing lamina, repair insulation and lamina as per DryvitCARE™ EIFS Repair Procedure, DSC498. |
| NEW WALLS | The reinforced base coat must be fully dried (a minimum of 24 hours depending on weather conditions) and clean prior to applying the ShieldIt Base Coat layers. ShieldIt is not a substitute for Panzer mesh on flat wall areas, but can be applied on architectural trim and profiles where Panzer is not suitable. |
| FINISH | Select from Dryvit's wide range of textured finishes, including Sandpebble™, Sandpebble Fine™, Sandblast®, Quarzputz®, Freestyle® or the Weatherlastic™, E Finish™ or NT Finishes™. Our specialty finishes can also be used, including Custom Brick™, Limestone™, TerraNeo™, Ameristone™, Stone Mist™ and Tuscan Glaze™. |



GET STARTED TODAY!

Consult with Dryvit at 1-800-263-3308 for more information on how you can benefit from the ShieldIt Program.

FINISHES FOR EVERY DESIGN CHALLENGE

We all want our buildings to stand out and be noticed. That's why Dryvit manufactures an array of finishes that replicate brick to stone to granite to classic artisan stucco and more. Use them alone or in combination to create the unique exterior you want, but can not afford with heavier, costlier materials.

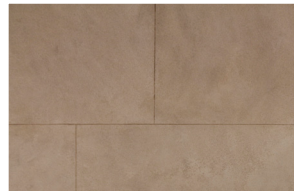
VENEERS



Seamless Stone



Traditional Plaster Renders



Limestone



Old World or "Aged" Plaster



Smooth Textured Stucco



Brick

Information contained in this brochure conforms to the standard detail recommendations and specifications for the installation of Dryvit Systems Canada products as of the date of the publication of this document and is presented in good faith. Dryvit Systems Canada assumes no liability, expressed or implied, as to the architecture, engineering or workmanship of any project. To ensure that you are using the latest, most complete information, contact Dryvit Systems Canada.

Dryvit Systems Canada
129 Ringwood Dr.
Stouffville, ON L4A 8C1
905-642-0444
dryvit.ca



© Dryvit Systems Canada 2016
Printed in Canada 2016-11-15
DSC278