

Outsulation® MD (NC) System Installation Details



129 Ringwood Drive
Stouffville, Ontario L4A 8C1
800-263-3308
www.dryvit.ca

The architecture, engineering and design of the project using the Dryvit products is the responsibility of the project's design professional. All systems must comply with local building codes and standards. This detail is for general information and guidance only and Dryvit Systems Canada specifically disclaims any liability for the use of this detail and/or for the architecture, design, engineering or workmanship of any project. The design professional determines, at its sole discretion, whether this detail or a functionally equivalent alternative is best suited for the project. Use of a functionally equivalent detail does not violate Dryvit's warranty. This detail is subject to change without notice. Contact Dryvit Systems Canada to ensure you have the most recent version.

Outsulation® MD (NC) System

DETAIL

OMD.01	DRAINAGE OPTIONS 1, 2 & 3
OMD.02	OARD PROFILE & ADHESIVE PATTERN
OMD.03	OUTSIDE CORNER - EPS BOARD LAYOUT DRAINAGE OPTIONS 1 & 2
OMD.04	BUILDING FACADE - AQUADUCT PLACEMENT DRAINAGE OPTION 3
OMD.05	OUTSIDE CORNER - EPS BOARD LAYOUT- DRAINAGE OPTION 3
OMD.06	TERMINATION AT GRADE LEVEL
OMD.07	TERMINATION AT CONCRETE
OMD.08	PROTECTION OF ROUGH OPENINGS
OMD.09	WINDOW HEAD / SILL
OMD.10	WINDOW JAMB
OMD.11	PARAPET - CAP FLASHING
OMD.12	PARAPET - SOLID SUBSTRATE, CAP FLASHING
OMD.13	SOFFIT / FASCIA INTERSECTION
OMD.14	INSIDE / OUTSIDE CORNERS
OMD.15	OUTSIDE CORNER - HIGH IMPACT
OMD.16	HORIZONTAL EXPANSION JOINT - DRAINAGE OPTIONS 1 & 2
OMD.17	HORIZONTAL EXPANSION JOINT - DRAINAGE OPTIONS 1 & 2
OMD.18	HORIZONTAL EXPANSION JOINT - DRAINAGE OPTION 3
OMD.19	HORIZONTAL EXPANSION JOINT - DRAINAGE OPTION 3
OMD.20	TWO-STAGE SEALANT JOINTS
OMD.21	STRUCTURAL EXPANSION JOINTS
OMD.22	PENETRATIONS - CROSS SECTION
OMD.23	INSULATION LAYOUT - OPENINGS
OMD.24	SIGN ATTACHMENT
OMD.25	AESTHETIC REVEALS
OMD.26	PROJECTING SHAPES
OMD.27	RECESSED REVEALS

NOTE

DRYVIT MAKES NO REPRESENTATION REGARDING CONFORMITY OF ITS SUGGESTIONS TO MODEL BUILDING CODES, ENGINEERING CRITERIA, SPECIFIC APPLICATIONS, OR PROJECT LOCATIONS. ALL COMPONENTS INDICATED IN ILLUSTRATIONS, AS WELL AS OTHERS THAT MAY BE REQUIRED FOR THE INTEGRITY OF THE SYSTEM SHALL BE DESIGNED, DETAILED, AND ENGINEERED BY REPRESENTATIVES OF THE ARCHITECT, OWNER, OR CONTRACTOR TO BE IN CONFORMANCE WITH MODEL CODES, ARCHITECTURAL, AND ENGINEERING REQUIREMENTS PERTAINING TO SPECIFIC BUILDING PROJECTS.

DRYVIT MAKES NO WARRANTY, EXPRESSED OR IMPLIED, AS TO THE ARCHITECTURAL DESIGN, ENGINEERING, OR WORKMANSHIP OF PROJECTS UTILIZING DRYVIT SYSTEMS OR PRODUCTS.

THE LIABILITIES OF DRYVIT SHALL BE AS STATED IN THE OUTSULATION® MD LIMITED WARRANTY. CONTACT DRYVIT FOR A FULL AND COMPLETE COPY OF THE WARRANTY.

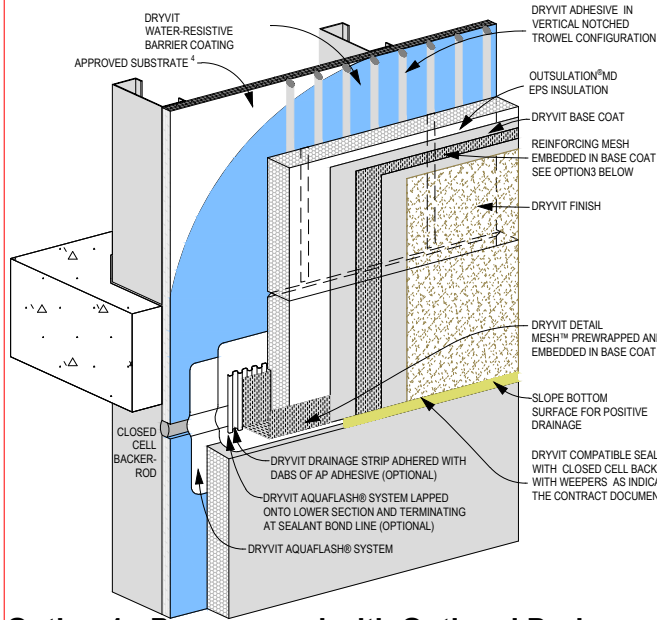
R-005-01-18

TABLE OF CONTENTS

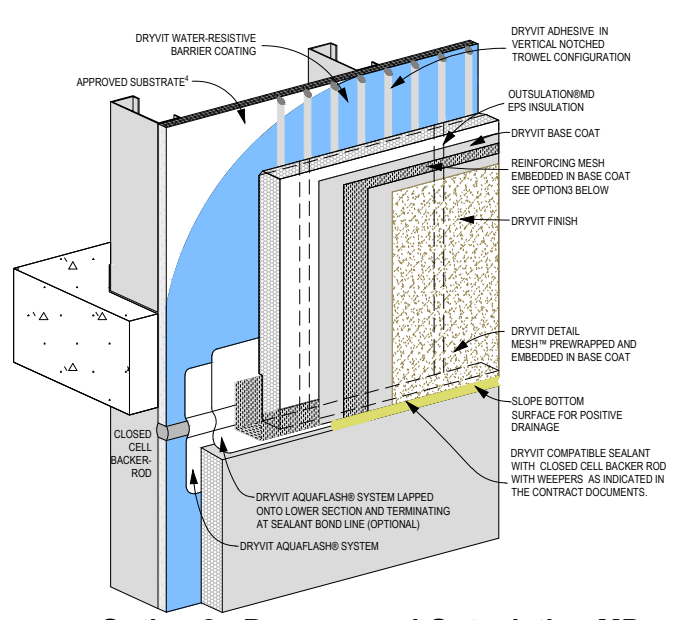


129 Ringwood Drive
Stouffville, Ontario L4A 8C1
800-263-3308
www.dryvit.ca

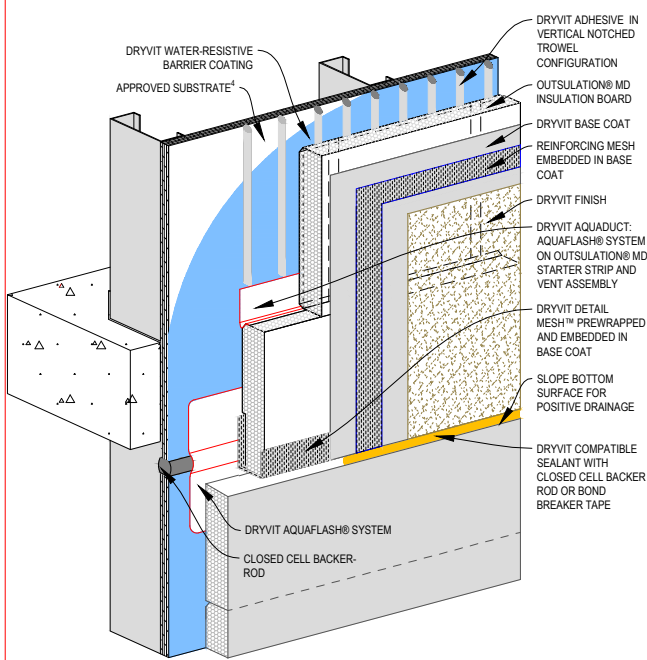
The architecture, engineering and design of the project using the Dryvit products is the responsibility of the project's design professional. All systems must comply with local building codes and standards. This detail is for general information and guidance only and Dryvit Systems Canada specifically disclaims any liability for the use of this detail and/or for the architecture, design, engineering or workmanship of any project. The design professional determines, at its sole discretion, whether this detail or a functionally equivalent alternative is best suited for the project. Use of a functionally equivalent detail does not violate Dryvit's warranty. This detail is subject to change without notice. Contact Dryvit Systems Canada to ensure you have the most recent version.



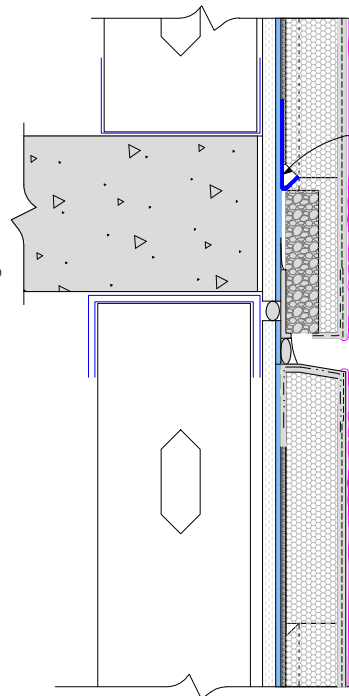
Option 1 - Pre-wrapped with Optional Drainage Strip



Option 2 - Pre-wrapped Outsulation MD



Option 3 - Vent Assembly & AquaDuct



Notes:

1. These details apply to both Outsulation MD and Outsulation MD (NC). Outsulation® MD (NC) requires the use of Primus® DM or Genesis™ DM as the base coat/adhesive.
2. Dryvit recommends that ground floor applications and all facades exposed to abnormal stress, high traffic, or deliberate impact have the base coat reinforced with Panzer® 15 or 20 Mesh prior to Outsulation MD. Location of high impact zones should be indicated in contract drawings.
3. It is the responsibility of the design authority to indicate which of these 3 drainage options are preferred.
4. Although not illustrated, substrates include wood framing and wood-based sheathings. Refer to Outsulation MD Specifications, DSC168, as well as details for Outsulation MD for Residential Construction DSC106.

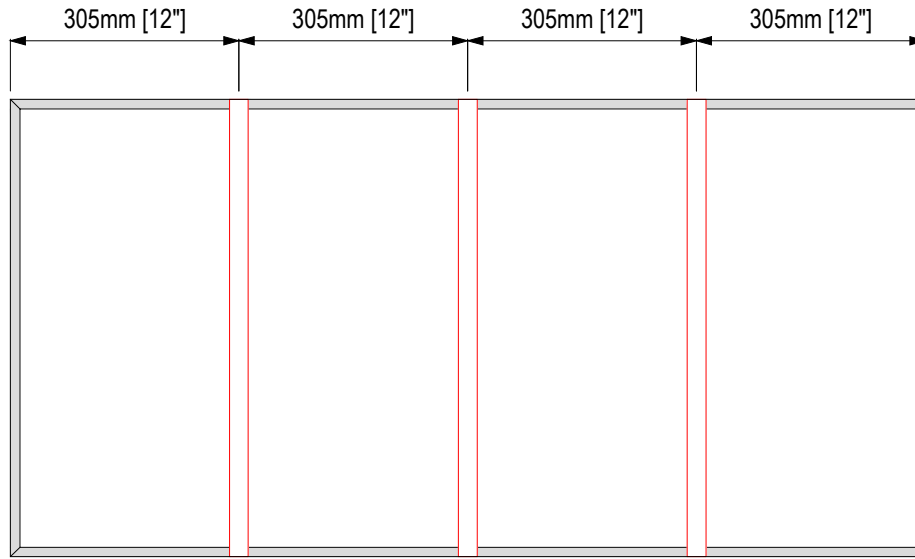
R-005-01-18

DRAINAGE OPTIONS 1, 2 & 3



129 Ringwood Drive
Stouffville, Ontario L4A 8C1
800-263-3308
www.dryvit.ca

The architecture, engineering and design of the project using the Dryvit products is the responsibility of the project's design professional. All systems must comply with local building codes and standards. This detail is for general information and guidance only and Dryvit Systems Canada specifically disclaims any liability for the use of this detail and/or for the architecture, design, engineering or workmanship of any project. The design professional determines, at its sole discretion, whether this detail or a functionally equivalent alternative is best suited for the project. Use of a functionally equivalent detail does not violate Dryvit's warranty. This detail is subject to change without notice. Contact Dryvit Systems Canada to ensure you have the most recent version.

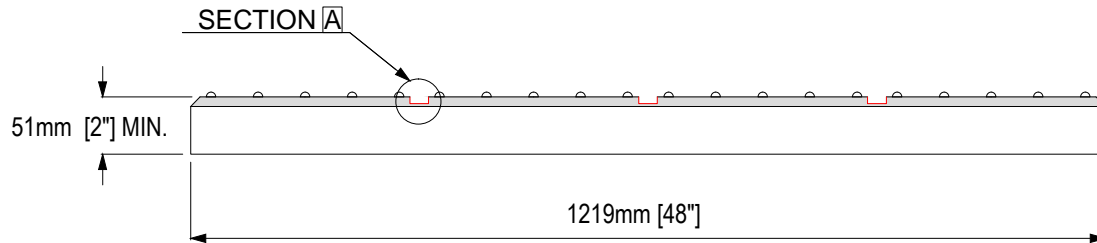


Notes:

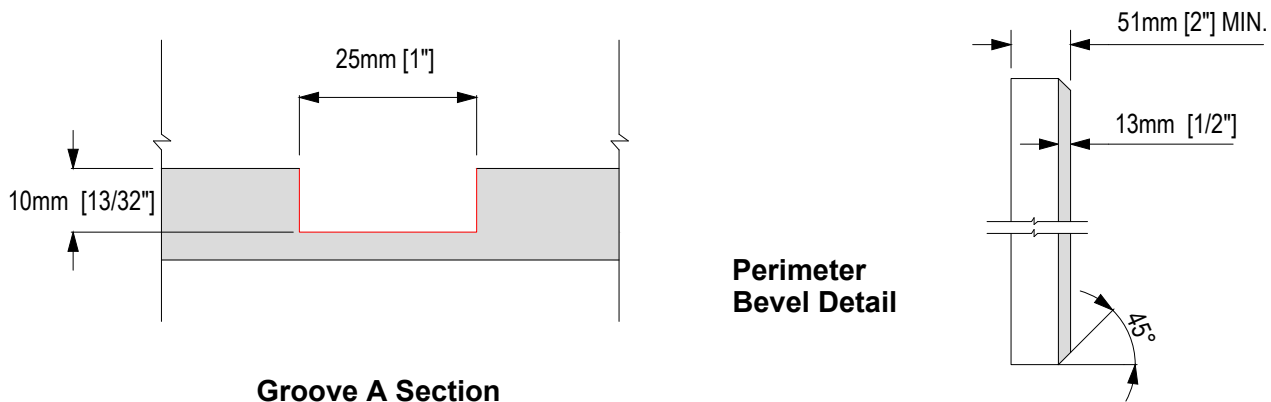
Notched trowel adhesive ribbons may vary from illustration.

A minimum of four (4) ribbons per 305mm [12"] section are required.

Elevation View - Wall Side



Plan View with sample adhesive distribution pattern



R-005-01-18

BOARD PROFILE AND ADHESIVE PATTERN



The architecture, engineering and design of the project using the Dryvit products is the responsibility of the project's design professional. All systems must comply with local building codes and standards. This detail is for general information and guidance only and Dryvit Systems Canada specifically disclaims any liability for the use of this detail and/or for the architecture, design, engineering or workmanship of any project. The design professional determines, at its sole discretion, whether this detail or a functionally equivalent alternative is best suited for the project. Use of a functionally equivalent detail does not violate Dryvit's warranty. This detail is subject to change without notice. Contact Dryvit Systems Canada to ensure you have the most recent version.

Notes:

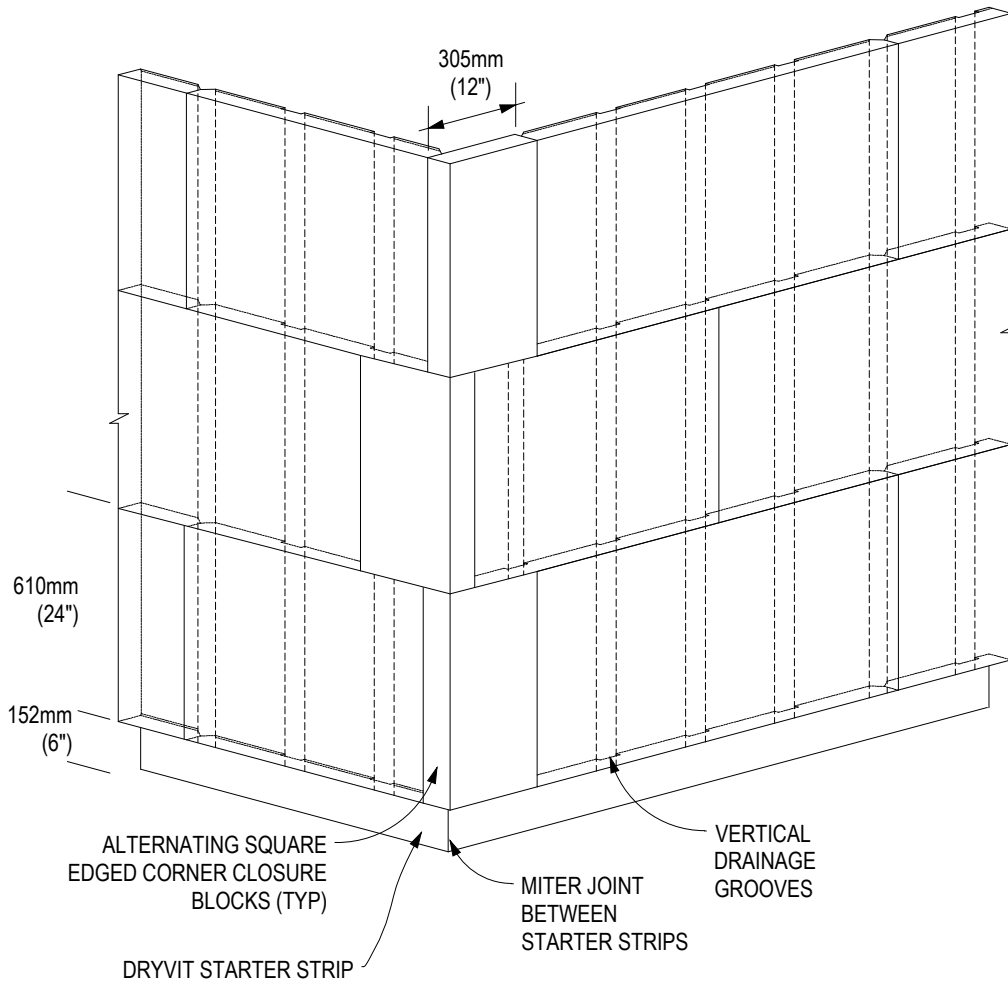
1. These details apply to both Outsulation MD and Outsulation MD (NC). Outsulation® MD (NC) requires the use of Primus® DM or Genesis™ DM as the base coat/adhesive.

2. Dryvit recommends that ground floor applications and all facades exposed to abnormal stress, high traffic, or deliberate impact have the base coat reinforced with Panzer® 15 or 20 Mesh prior to Standard Mesh. Location of high impact zones should be indicated in contract drawings.

3. Install square edged corner closure blocks on alternating sides of outside corners.

4. Alignment of vertical grooves not required.

5. Closure blocks not required at vertical terminations, i.e. expansion joints and vertical integration with other cladding.



R-005-01-18

EPS BOARD LAYOUT- DRAINAGE OPTIONS 1 & 2



129 Ringwood Drive
Stouffville, Ontario L4A 8C1
800-263-3308
www.dryvit.ca

The architecture, engineering and design of the project using the Dryvit products is the responsibility of the project's design professional. All systems must comply with local building codes and standards. This detail is for general information and guidance only and Dryvit Systems Canada specifically disclaims any liability for the use of this detail and/or for the architecture, design, engineering or workmanship of any project. The design professional determines, at its sole discretion, whether this detail or a functionally equivalent alternative is best suited for the project. Use of a functionally equivalent detail does not violate Dryvit's warranty. This detail is subject to change without notice. Contact Dryvit Systems Canada to ensure you have the most recent version.

Notes:

1. These details apply to both Outsulation MD and Outsulation MD (NC). Outsulation® MD (NC) requires the use of Primus® DM or Genesis™ DM as the base coat/adhesive.

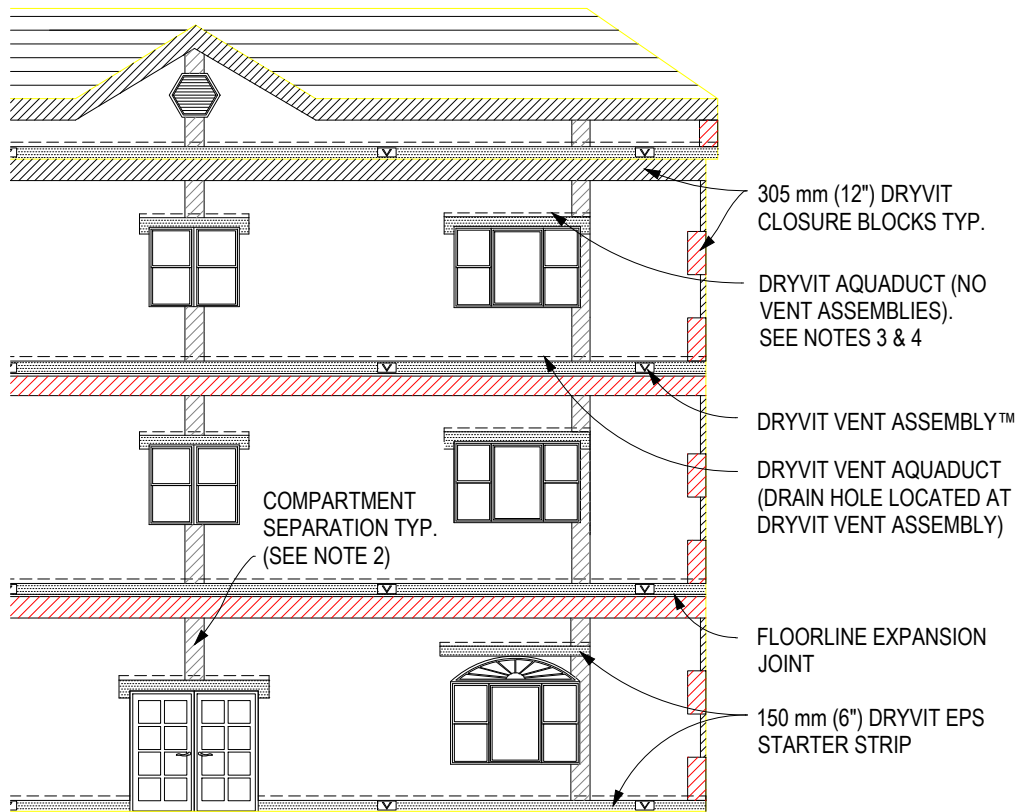
Option-3 Notes:

1. Compartment locations determined as per ASCE 7-95 and Dryvit Outsulation MD System Specifications DSC168.

2. Vertical compartment separations not required where pressure equalization is not desired.

3. Dryvit Starter Strip above to be notched a minimum of 76.2mm (3") to accommodate picture framing.

4. For windows/glazing greater than 3m (10') wide, see detail OMD.09



Building Facade - AquaDuct Placement Drainage Option 3

R-005-01-18

AQUADUCT PLACEMENT DRAINAGE OPTION 3



129 Ringwood Drive
Stouffville, Ontario L4A 8C1
800-263-3308
www.dryvit.ca

The architecture, engineering and design of the project using the Dryvit products is the responsibility of the project's design professional. All systems must comply with local building codes and standards. This detail is for general information and guidance only and Dryvit Systems Canada specifically disclaims any liability for the use of this detail and/or for the architecture, design, engineering or workmanship of any project. The design professional determines, at its sole discretion, whether this detail or a functionally equivalent alternative is best suited for the project. Use of a functionally equivalent detail does not violate Dryvit's warranty. This detail is subject to change without notice. Contact Dryvit Systems Canada to ensure you have the most recent version.

Notes:

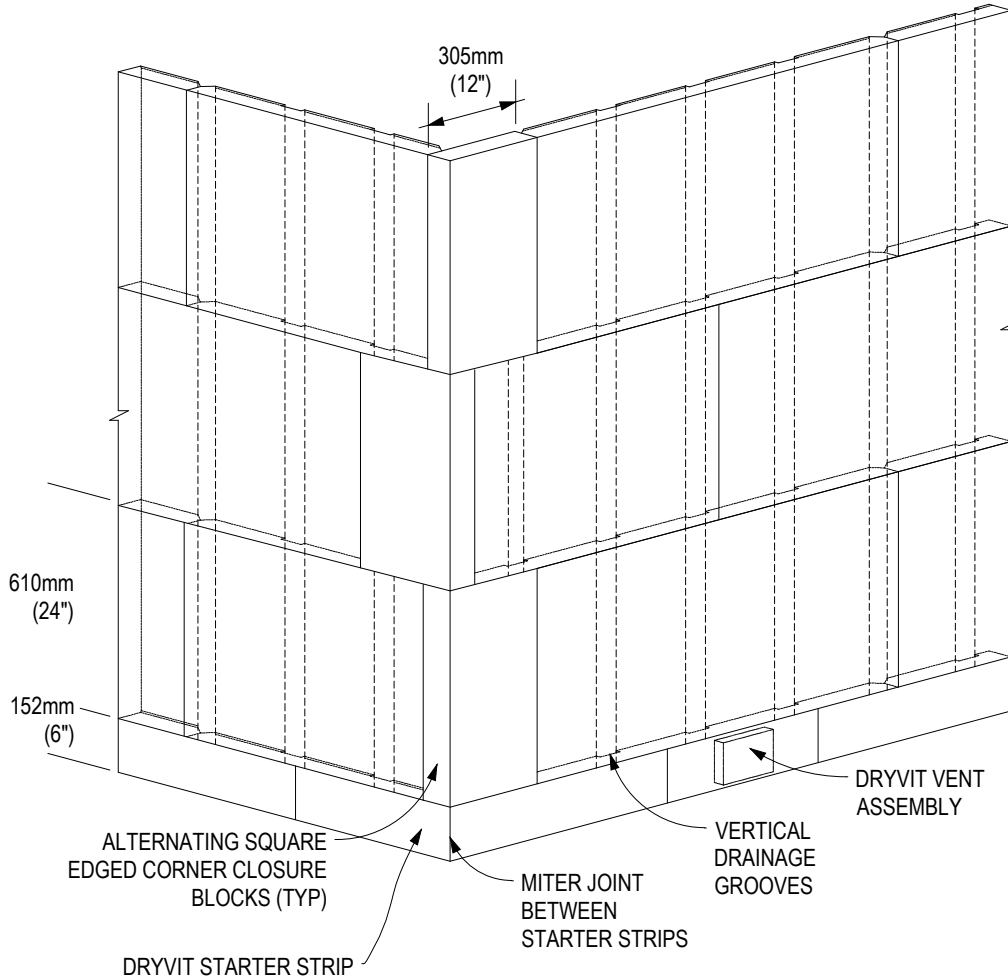
1. These details apply to both Outsulation MD and Outsulation MD (NC). Outsulation® MD (NC) requires the use of Primus® DM or Genesis™ DM as the base coat/adhesive.

2. Dryvit recommends that ground floor applications and all facades exposed to abnormal stress, high traffic, or deliberate impact have the base coat reinforced with Panzer® 15 or 20 Mesh prior to Standard Mesh. Location of high impact zones should be indicated in contract drawings.

3. Install square edged corner closure blocks on alternating sides of outside corners.

4. Alignment of vertical grooves not required.

5. Closure blocks not required at vertical terminations, i.e. expansion joints and vertical integration with other cladding.



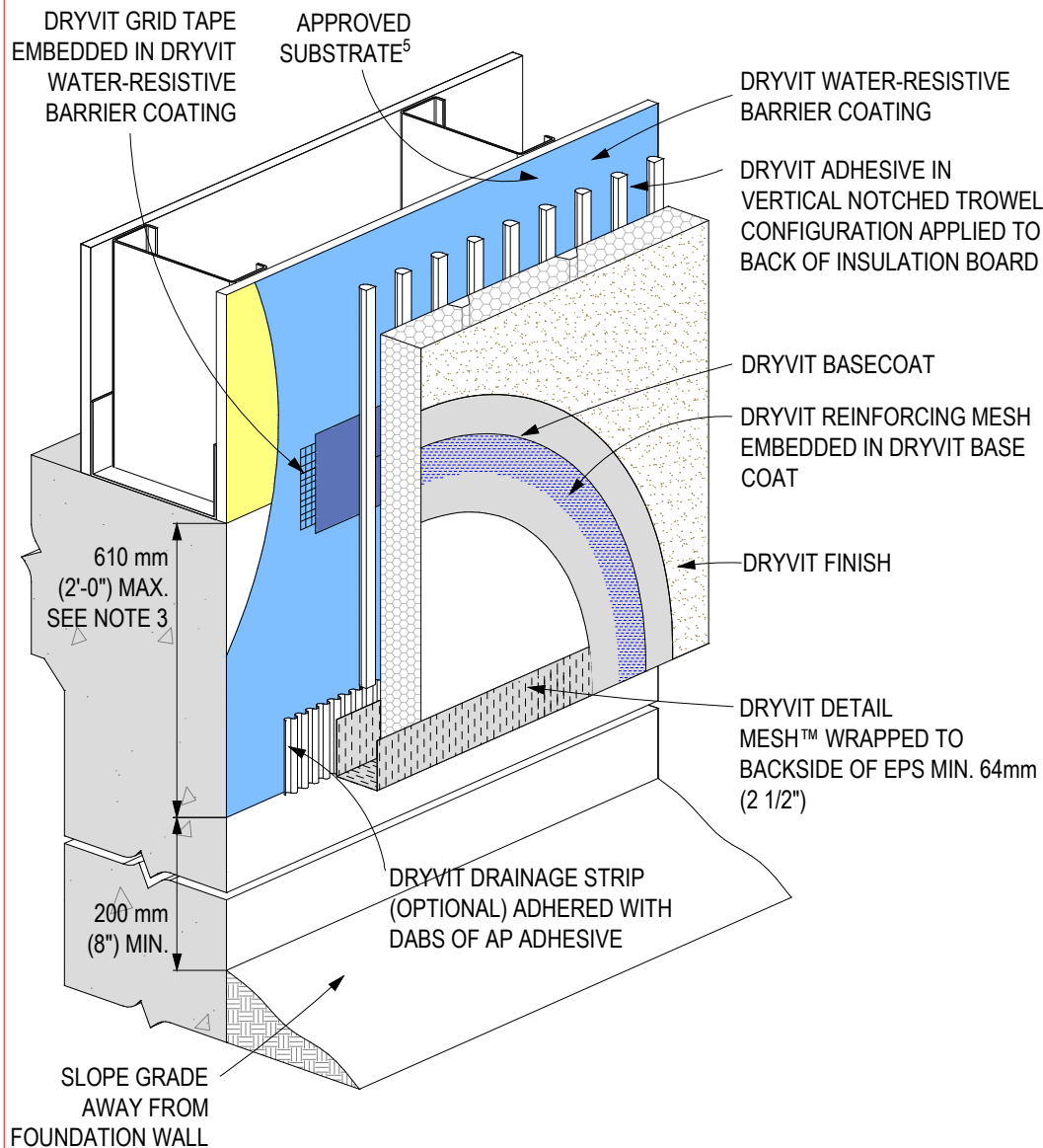
R-005-01-18

OUTSIDE CORNER - EPS BOARD LAYOUT- DRAINAGE OPTION 3



129 Ringwood Drive
Stouffville, Ontario L4A 8C1
800-263-3308
www.dryvit.ca

The architecture, engineering and design of the project using the Dryvit products is the responsibility of the project's design professional. All systems must comply with local building codes and standards. This detail is for general information and guidance only and Dryvit Systems Canada specifically disclaims any liability for the use of this detail and/or for the architecture, design, engineering or workmanship of any project. The design professional determines, at its sole discretion, whether this detail or a functionally equivalent alternative is best suited for the project. Use of a functionally equivalent detail does not violate Dryvit's warranty. This detail is subject to change without notice. Contact Dryvit Systems Canada to ensure you have the most recent version.



Notes:

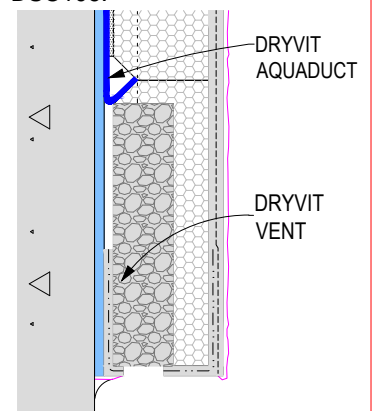
1. These details apply to both Outsulation MD and Outsulation MD (NC). Outsulation® MD (NC) requires the use of Primus® DM or Genesis™ DM as the base coat/adhesive.

2. Dryvit recommends that ground floor applications and all facades exposed to abnormal stress, high traffic, or deliberate impact have the base coat reinforced with Panzer® 15 or 20 Mesh prior to Standard Mesh. Location of high impact zones should be indicated in contract drawings.

3. Lightly sand surface of track to maximize adhesion.

4. Expansion joint is required along top of foundation if 610mm (2'-0") dimension is exceeded.

5. Although not illustrated, substrates include wood framing and wood-based sheathings. Refer to Outsulation MD Specifications, DSC168, as well as details for Outsulation MD for Residential Construction DSC106.



AquaDuct Drainage Option 3

R-005-01-18

TERMINATION AT GRADE LEVEL



129 Ringwood Drive
Stouffville, Ontario L4A 8C1
800-263-3308
www.dryvit.ca

The architecture, engineering and design of the project using the Dryvit products is the responsibility of the project's design professional. All systems must comply with local building codes and standards. This detail is for general information and guidance only and Dryvit Systems Canada specifically disclaims any liability for the use of this detail and/or for the architecture, design, engineering or workmanship of any project. The design professional determines, at its sole discretion, whether this detail or a functionally equivalent alternative is best suited for the project. Use of a functionally equivalent detail does not violate Dryvit's warranty. This detail is subject to change without notice. Contact Dryvit Systems Canada to ensure you have the most recent version.

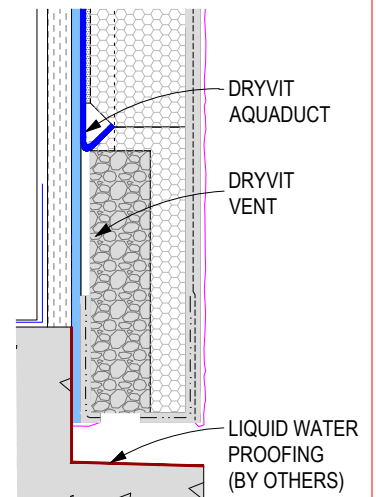
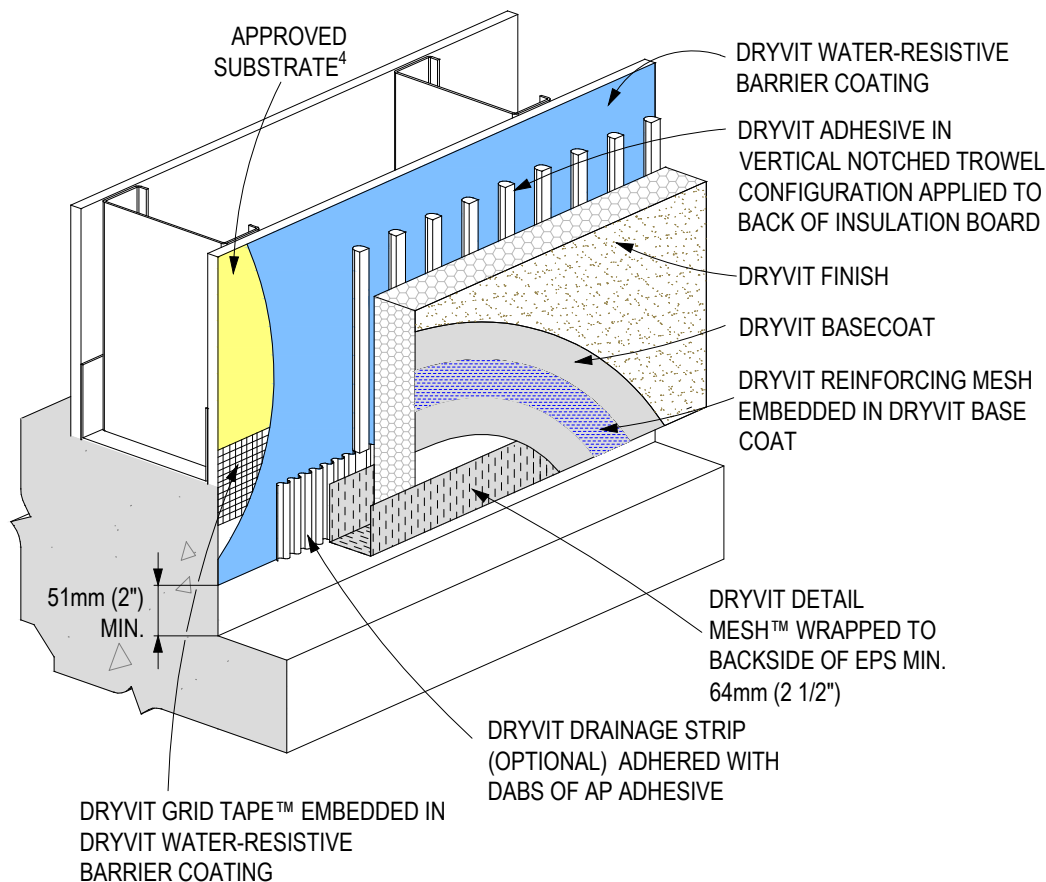
Notes:

1. These details apply to both Outsulation MD and Outsulation MD (NC). Outsulation® MD (NC) requires the use of Primus® DM or Genesis™ DM as the base coat/adhesive.

2. Dryvit recommends that ground floor applications and all facades exposed to abnormal stress, high traffic, or deliberate impact have the base coat reinforced with Panzer® 15 or 20 Mesh prior to Standard Mesh. Location of high impact zones should be indicated in contract drawings.

3. Lightly sand surface of track to maximize adhesion.

4. Although not illustrated, substrates include wood framing and wood-based sheathings. Refer to Outsulation MD Specifications, DSC168, as well as details for Outsulation MD for Residential Construction DSC106.



AquaDuct Drainage Option 3

R-005-01-18

TERMINATION AT CONCRETE



129 Ringwood Drive
Stouffville, Ontario L4A 8C1
800-263-3308
www.dryvit.ca

The architecture, engineering and design of the project using the Dryvit products is the responsibility of the project's design professional. All systems must comply with local building codes and standards. This detail is for general information and guidance only and Dryvit Systems Canada specifically disclaims any liability for the use of this detail and/or for the architecture, design, engineering or workmanship of any project. The design professional determines, at its sole discretion, whether this detail or a functionally equivalent alternative is best suited for the project. Use of a functionally equivalent detail does not violate Dryvit's warranty. This detail is subject to change without notice. Contact Dryvit Systems Canada to ensure you have the most recent version.

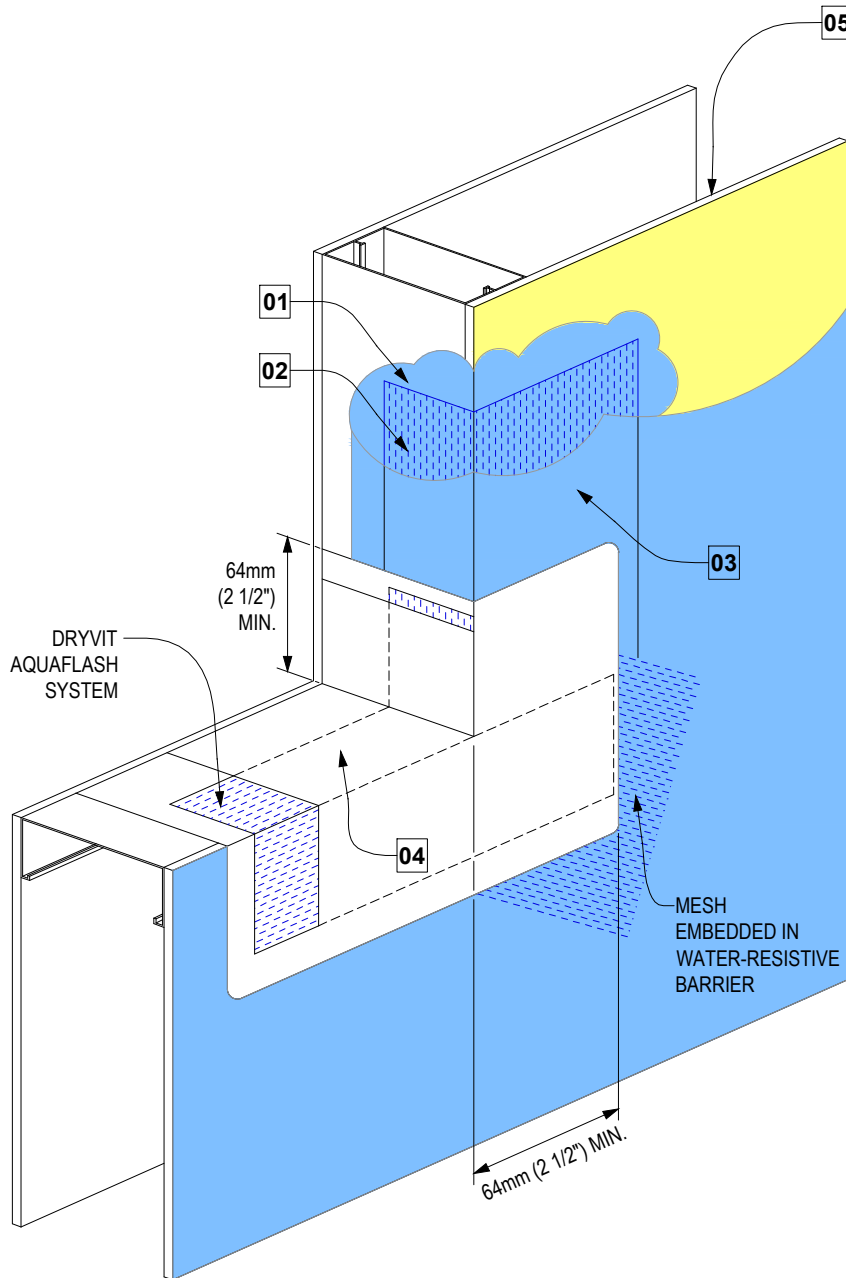
Application Sequence and Notes:

1. All water-resistive barrier (WRB) over sheathing and into rough opening.
2. Embed Detail Mesh™ into WRB, stopping at sill. Embed diagonal mesh at all corners
3. Once embedment is complete, apply WRB over remainder of the substrate as illustrated.
4. Apply AquaFlash® and AquaFlash Mesh as per DSC196 - Sills only if WRB is applied around the balance of the rough opening.

AquaFlash is applied using a brush or deep-nap roller. Embed AquaFlash Mesh into wet AquaFlash and allow to set.

Apply second coat fully covering the AquaFlash Mesh.

5. Approved substrate - although not illustrated, substrates include wood framing and wood-based sheathings. Refer to Outsulation MD Specifications, DSC168, as well as details for Outsulation MD for Residential Construction DSC106.



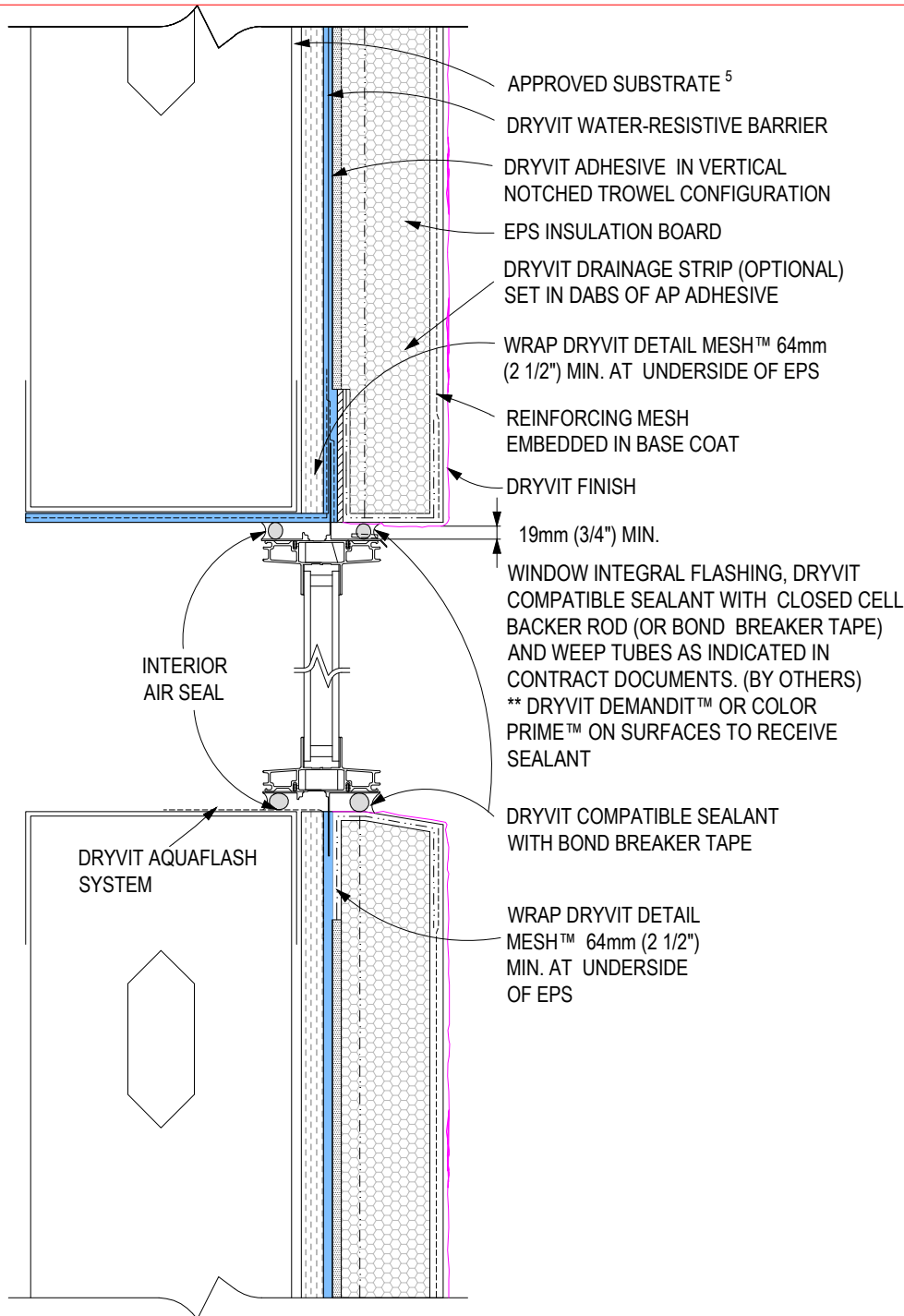
R-005-01-18

PROTECTION OF ROUGH OPENINGS



129 Ringwood Drive
Stouffville, Ontario L4A 8C1
800-263-3308
www.dryvit.ca

The architecture, engineering and design of the project using the Dryvit products is the responsibility of the project's design professional. All systems must comply with local building codes and standards. This detail is for general information and guidance only and Dryvit Systems Canada specifically disclaims any liability for the use of this detail and/or for the architecture, design, engineering or workmanship of any project. The design professional determines, at its sole discretion, whether this detail or a functionally equivalent alternative is best suited for the project. Use of a functionally equivalent detail does not violate Dryvit's warranty. This detail is subject to change without notice. Contact Dryvit Systems Canada to ensure you have the most recent version.



Notes:

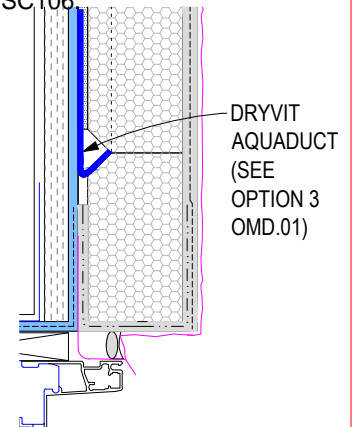
1. These details apply to both Outsulation MD and Outsulation MD (NC). Outsulation® MD (NC) requires the use of Primus® DM or Genesis™ DM as the base coat/adhesive.

2. Dryvit recommends that ground floor applications and all facades exposed to abnormal stress, high traffic, or deliberate impact have the base coat reinforced with Panzer® 15 or 20 Mesh prior to Standard Mesh. Location of high impact zones should be indicated in contract drawings.

3. Window flashing and sealants by others.

4. General contractor required to coordinate rough opening preparation prior to window installation.

5. Although not illustrated, substrates include wood framing and wood-based sheathings. Refer to Outsulation MD Specifications, DSC168, as well as details for Outsulation MD for Residential Construction DSC106.



AquaDuct Drainage Option 3

R-005-01-18

WINDOW HEAD/SILL



129 Ringwood Drive
Stouffville, Ontario L4A 8C1
800-263-3308
www.dryvit.ca

The architecture, engineering and design of the project using the Dryvit products is the responsibility of the project's design professional. All systems must comply with local building codes and standards. This detail is for general information and guidance only and Dryvit Systems Canada specifically disclaims any liability for the use of this detail and/or for the architecture, design, engineering or workmanship of any project. The design professional determines, at its sole discretion, whether this detail or a functionally equivalent alternative is best suited for the project. Use of a functionally equivalent detail does not violate Dryvit's warranty. This detail is subject to change without notice. Contact Dryvit Systems Canada to ensure you have the most recent version.

Notes:

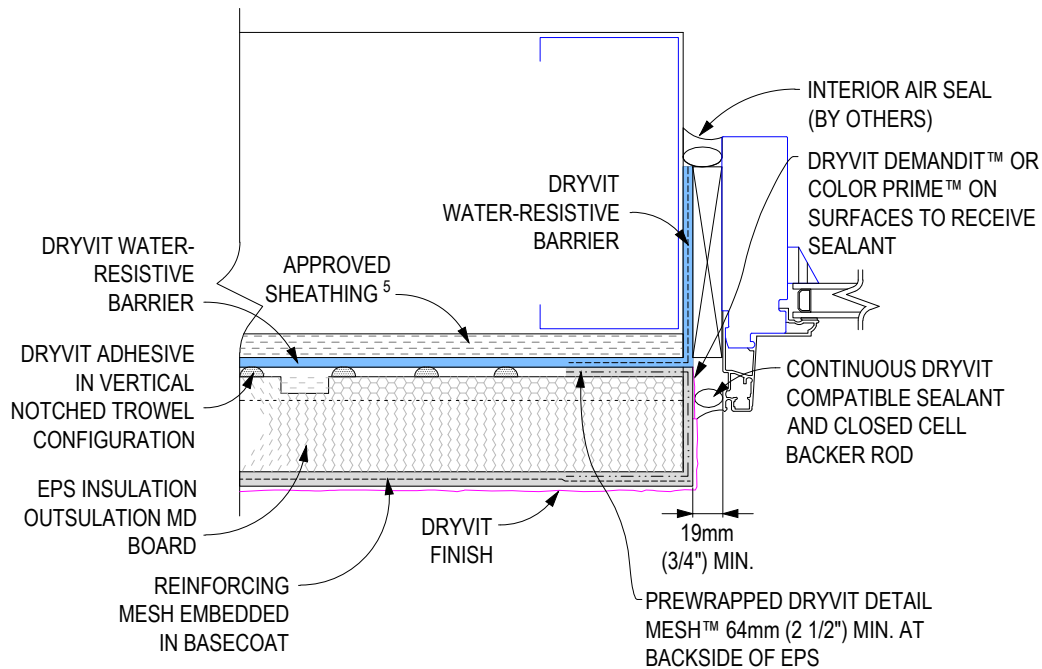
1. These details apply to both Outsulation MD and Outsulation MD (NC). Outsulation® MD (NC) requires the use of Primus® DM or Genesis™ DM as the base coat/adhesive.

2. Dryvit recommends that ground floor applications and all facades exposed to abnormal stress, high traffic, or deliberate impact have the base coat reinforced with Panzer® 15 or 20 Mesh prior to Standard Mesh. Location of high impact zones should be indicated in contract drawings.

3. Window, flashing and sealants by others.

4. General contractor required to coordinate rough opening preparation prior to window installation.

5. Although not illustrated, substrates include wood framing and wood-based sheathings. Refer to Outsulation MD Specifications, DSC168, as well as details for Outsulation MD for Residential Construction DSC106.



R-005-01-18

WINDOW JAMB



129 Ringwood Drive
Stouffville, Ontario L4A 8C1
800-263-3308
www.dryvit.ca

The architecture, engineering and design of the project using the Dryvit products is the responsibility of the project's design professional. All systems must comply with local building codes and standards. This detail is for general information and guidance only and Dryvit Systems Canada specifically disclaims any liability for the use of this detail and/or for the architecture, design, engineering or workmanship of any project. The design professional determines, at its sole discretion, whether this detail or a functionally equivalent alternative is best suited for the project. Use of a functionally equivalent detail does not violate Dryvit's warranty. This detail is subject to change without notice. Contact Dryvit Systems Canada to ensure you have the most recent version.

Notes:

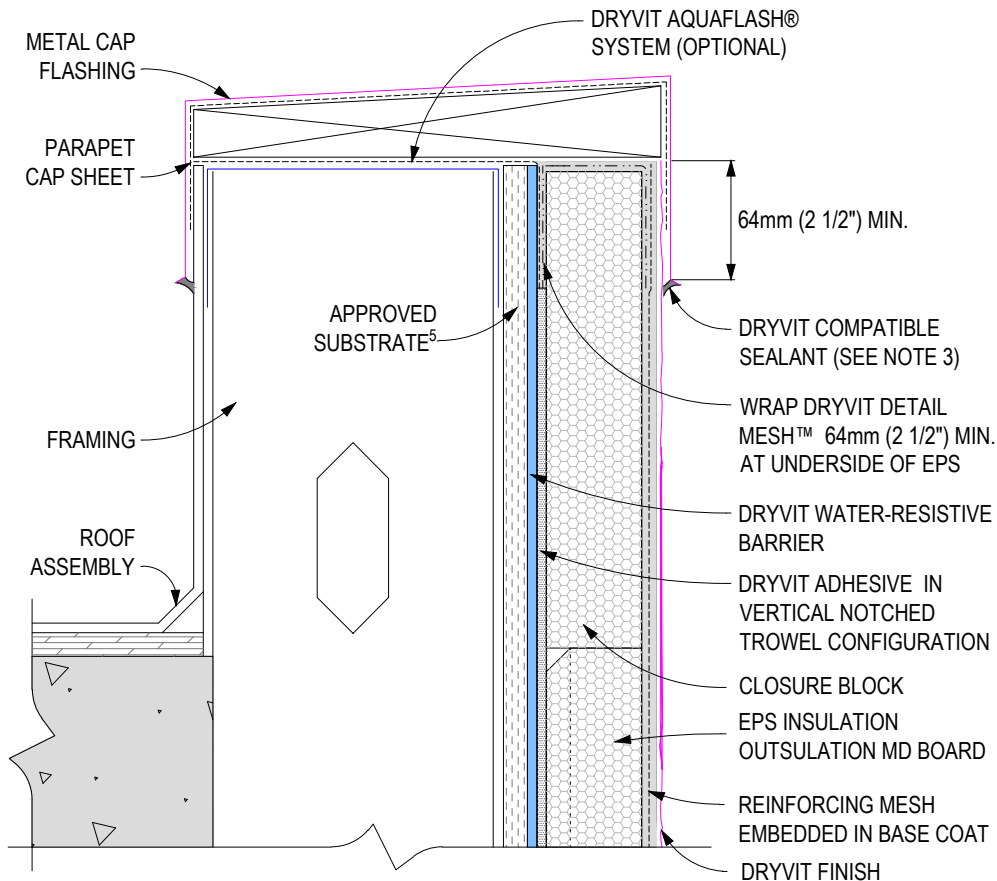
1. These details apply to both Outsulation MD and Outsulation MD (NC). Outsulation® MD (NC) requires the use of Primus® DM or Genesis™ DM as the base coat/adhesive.

2. Dryvit recommends that ground floor applications and all facades exposed to abnormal stress, high traffic, or deliberate impact have the base coat reinforced with Panzer® 15 or 20 Mesh prior to Standard Mesh. Location of high impact zones should be indicated in contract drawings.

3. Ensure that parapet capping is water tight if sealant is to be applied here. Otherwise extend capping overlap as required to avoid moisture migration behind system.

4. Roofing, blocking, secondary waterproofing and cap flashing is by others.

5. Although not illustrated, substrates include wood framing and wood-based sheathings. Refer to Outsulation MD Specifications, DSC168, as well as details for Outsulation MD for Residential Construction DSC106.



R-005-01-18

PARAPET - CAP FLASHING



129 Ringwood Drive
Stouffville, Ontario L4A 8C1
800-263-3308
www.dryvit.ca

The architecture, engineering and design of the project using the Dryvit products is the responsibility of the project's design professional. All systems must comply with local building codes and standards. This detail is for general information and guidance only and Dryvit Systems Canada specifically disclaims any liability for the use of this detail and/or for the architecture, design, engineering or workmanship of any project. The design professional determines, at its sole discretion, whether this detail or a functionally equivalent alternative is best suited for the project. Use of a functionally equivalent detail does not violate Dryvit's warranty. This detail is subject to change without notice. Contact Dryvit Systems Canada to ensure you have the most recent version.

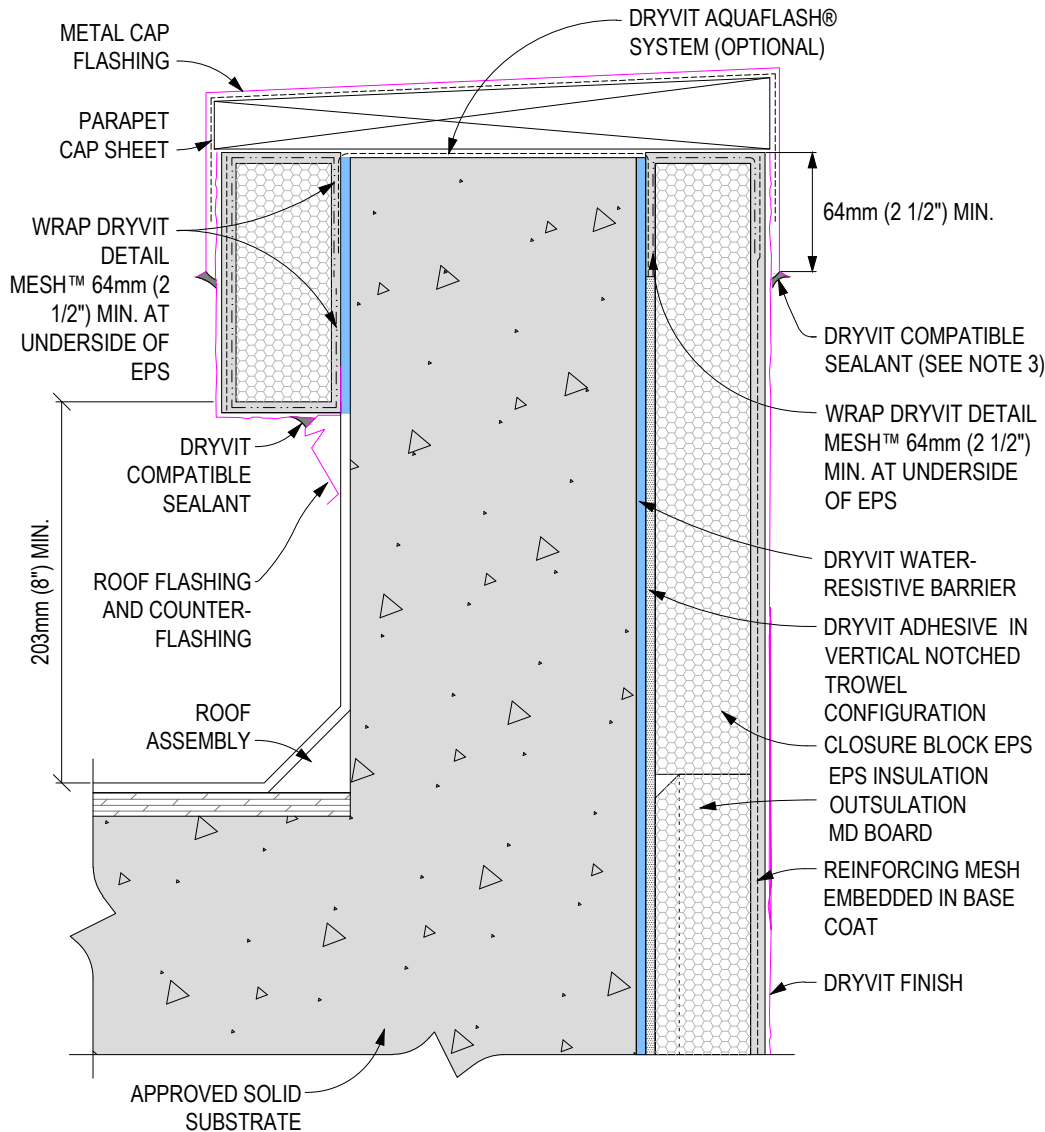
Notes:

1. These details apply to both Outsulation MD and Outsulation MD (NC). Outsulation® MD (NC) requires the use of Primus® DM or Genesis™ DM as the base coat/adhesive.

2. Dryvit recommends that ground floor applications and all facades exposed to abnormal stress, high traffic, or deliberate impact have the base coat reinforced with Panzer® 15 or 20 Mesh prior to Standard Mesh. Location of high impact zones should be indicated in contract drawings.

3. Ensure that parapet capping is water tight if sealant is to be applied here. Otherwise extend capping overlap as required to avoid moisture migration behind system.

4. Roofing, blocking, secondary water proofing and cap flashing by others.



R-005-01-18

PARAPET - SOLID SUBSTRATE, CAP FLASHING



129 Ringwood Drive
Stouffville, Ontario L4A 8C1
800-263-3308
www.dryvit.ca

The architecture, engineering and design of the project using the Dryvit products is the responsibility of the project's design professional. All systems must comply with local building codes and standards. This detail is for general information and guidance only and Dryvit Systems Canada specifically disclaims any liability for the use of this detail and/or for the architecture, design, engineering or workmanship of any project. The design professional determines, at its sole discretion, whether this detail or a functionally equivalent alternative is best suited for the project. Use of a functionally equivalent detail does not violate Dryvit's warranty. This detail is subject to change without notice. Contact Dryvit Systems Canada to ensure you have the most recent version.

Notes:

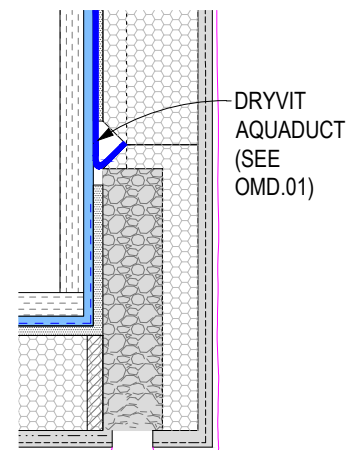
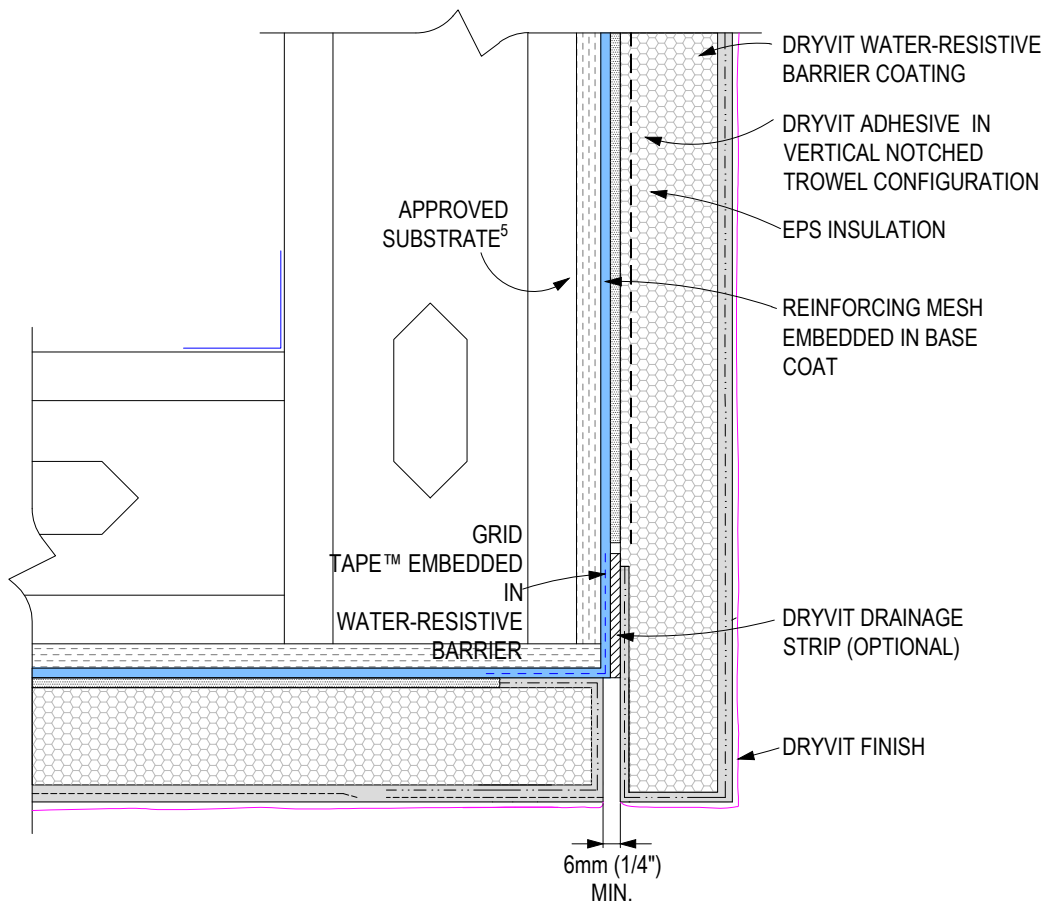
1. These details apply to both Outsulation MD and Outsulation MD (NC). Outsulation® MD (NC) requires the use of Primus® DM or Genesis™ DM as the base coat/adhesive.

2. Dryvit recommends that ground floor applications and all facades exposed to abnormal stress, high traffic, or deliberate impact have the base coat reinforced with Panzer® 15 or 20 Mesh prior to Standard Mesh. Location of high impact zones should be indicated in contract drawings.

3. Lightly sand surface of track to maximize adhesion.

4. AquaFlash Mesh or Detail Mesh can be used at sheathing transition - wall to soffit.

5. Although not illustrated, substrates include wood framing and wood-based sheathings. Refer to Outsulation MD Specifications, DSC168, as well as details for Outsulation MD for Residential Construction DSC106.



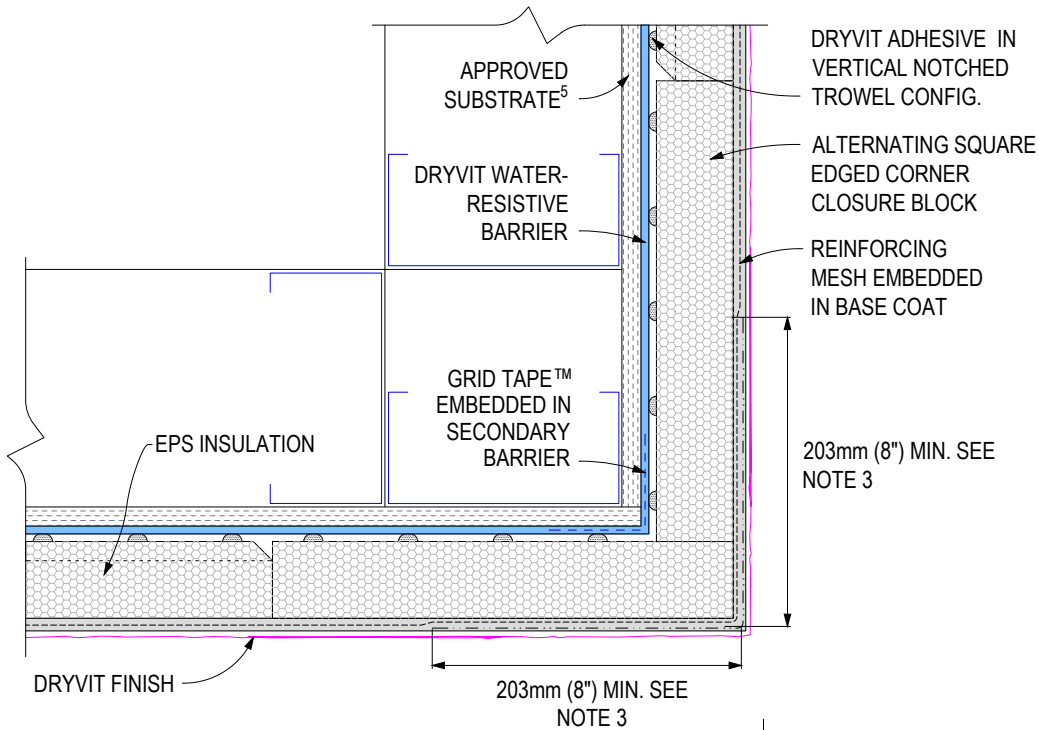
AquaDuct Drainage Option 3

R-005-01-18

SOFFIT /FASCIA INTERSECTION



The architecture, engineering and design of the project using the Dryvit products is the responsibility of the project's design professional. All systems must comply with local building codes and standards. This detail is for general information and guidance only and Dryvit Systems Canada specifically disclaims any liability for the use of this detail and/or for the architecture, design, engineering or workmanship of any project. The design professional determines, at its sole discretion, whether this detail or a functionally equivalent alternative is best suited for the project. Use of a functionally equivalent detail does not violate Dryvit's warranty. This detail is subject to change without notice. Contact Dryvit Systems Canada to ensure you have the most recent version.



Notes:

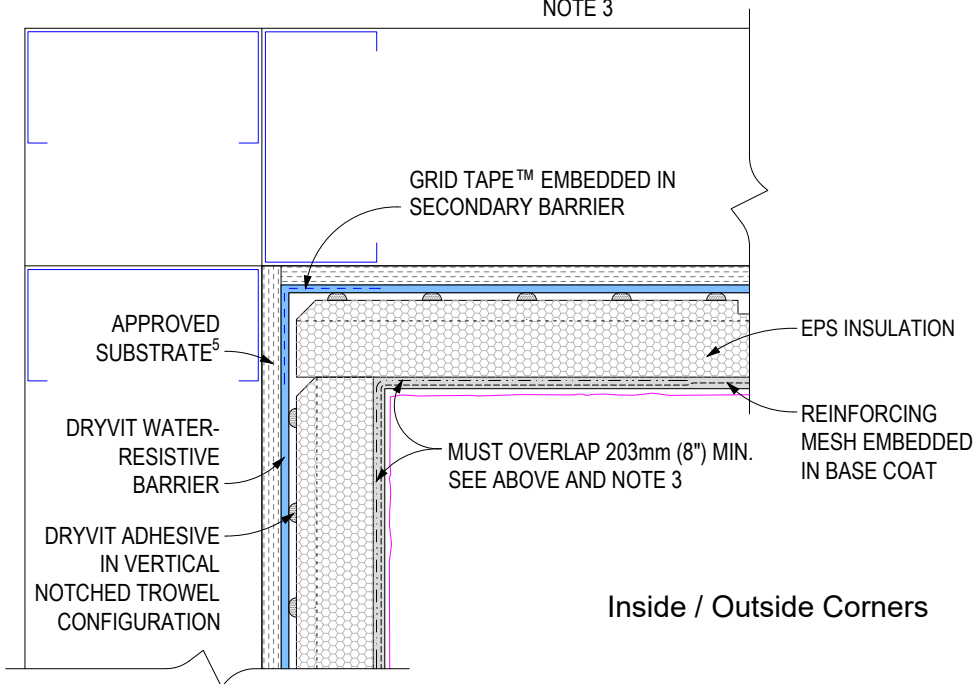
1. These details apply to both Outsulation MD and Outsulation MD (NC). Outsulation® MD (NC) requires the use of Primus® DM or Genesis™ DM as the base coat/adhesive.

2. Dryvit recommends that ground floor applications and all facades exposed to abnormal stress, high traffic, or deliberate impact have the base coat reinforced with Panzer® 15 or 20 Mesh prior to Standard Mesh. Location of high impact zones should be indicated in contract drawings.

3. Double wrap outside corners with reinforcing mesh at least 203mm (8") or use Panzer Corner mesh.

4. AquaFlash Mesh or Detail Mesh can be used at sheathing transition - wall to soffit.

5. Although not illustrated, substrates include wood framing and wood-based sheathings. Refer to Outsulation MD Specifications, DSC168, as well as details for Outsulation MD for Residential Construction DSC106.



Inside / Outside Corners

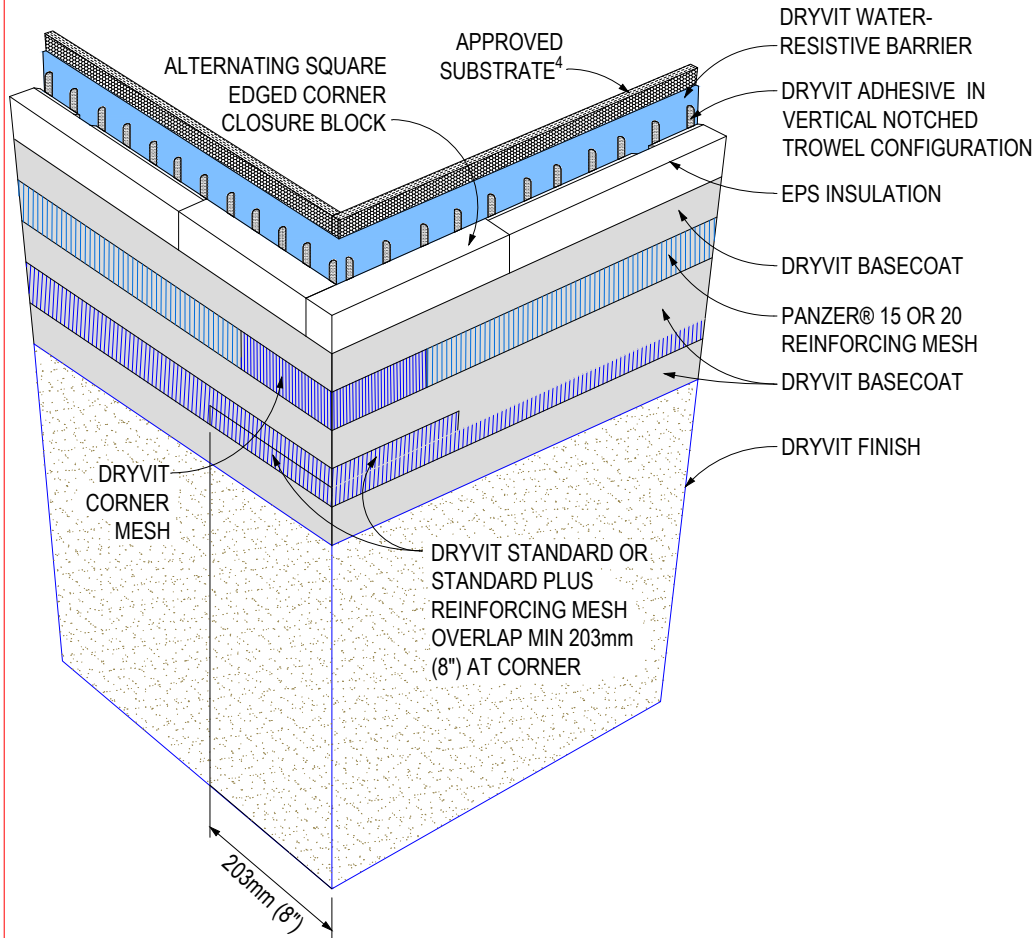
R-006-08-20

INSIDE/OUTSIDE CORNERS



129 Ringwood Drive
Stouffville, Ontario L4A 8C1
800-263-3308
www.dryvit.ca

The architecture, engineering and design of the project using the Dryvit products is the responsibility of the project's design professional. All systems must comply with local building codes and standards. This detail is for general information and guidance only and Dryvit Systems Canada specifically disclaims any liability for the use of this detail and/or for the architecture, design, engineering or workmanship of any project. The design professional determines, at its sole discretion, whether this detail or a functionally equivalent alternative is best suited for the project. Use of a functionally equivalent detail does not violate Dryvit's warranty. This detail is subject to change without notice. Contact Dryvit Systems Canada to ensure you have the most recent version.



Notes:

1. These details apply to both Outsulation MD and Outsulation MD (NC). Outsulation® MD (NC) requires the use of Primus® DM or Genesis™ DM as the base coat/adhesive.

2. Dryvit recommends that ground floor applications and all facades exposed to abnormal stress, high traffic, or deliberate impact have the base coat reinforced with Panzer® 15 or 20 Mesh prior to Standard Mesh. Location of high impact zones should be indicated in contract drawings.

3. AquaFlash Mesh or Detail Mesh can be used at sheathing transition - wall to soffit.

4. Although not illustrated, substrates include wood framing and wood-based sheathings. Refer to Outsulation MD Specifications, DSC168, as well as details for Outsulation MD for Residential Construction DSC106.

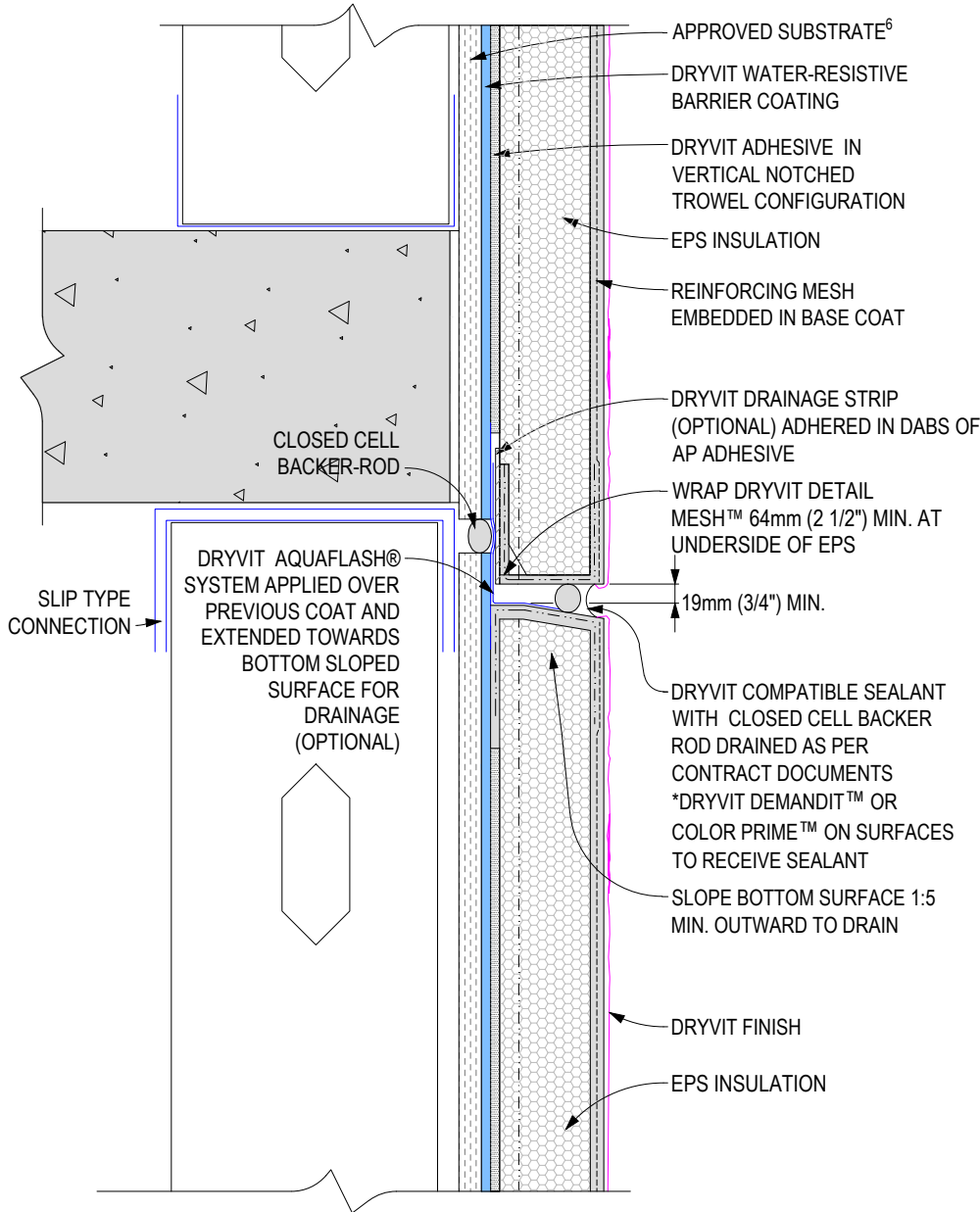
R-005-01-18

OUTSIDE CORNER - HIGH IMPACT



129 Ringwood Drive
Stouffville, Ontario L4A 8C1
800-263-3308
www.dryvit.ca

The architecture, engineering and design of the project using the Dryvit products is the responsibility of the project's design professional. All systems must comply with local building codes and standards. This detail is for general information and guidance only and Dryvit Systems Canada specifically disclaims any liability for the use of this detail and/or for the architecture, design, engineering or workmanship of any project. The design professional determines, at its sole discretion, whether this detail or a functionally equivalent alternative is best suited for the project. Use of a functionally equivalent detail does not violate Dryvit's warranty. This detail is subject to change without notice. Contact Dryvit Systems Canada to ensure you have the most recent version.



Notes:

1. These details apply to both Outsulation MD and Outsulation MD (NC). Outsulation® MD (NC) requires the use of Primus® DM or Genesis™ DM as the base coat/adhesive.

2. Dryvit recommends that ground floor applications and all facades exposed to abnormal stress, high traffic, or deliberate impact have the base coat reinforced with Panzer® 15 or 20 Mesh prior to Standard Mesh. Location of high impact zones should be indicated in contract drawings.

3. Expansion joint in the Outsulation® MD (NC) System is necessary where significant differential movement is expected to occur.

4. Locate external sealant joint within 50mm (2") of break in sheathing.

5. Apply Dryvit AquaFlash System over prepared joint at change in substrate.

6. Although not illustrated, substrates include wood framing and wood-based sheathings. Refer to Outsulation MD Specifications, DSC168, as well as details for Outsulation MD for Residential Construction DSC106.

R-005-01-18

HORIZONTAL EXPANSION JOINT - DRAINAGE OPTIONS 1 & 2



129 Ringwood Drive
Stouffville, Ontario L4A 8C1
800-263-3308
www.dryvit.ca

The architecture, engineering and design of the project using the Dryvit products is the responsibility of the project's design professional. All systems must comply with local building codes and standards. This detail is for general information and guidance only and Dryvit Systems Canada specifically disclaims any liability for the use of this detail and/or for the architecture, design, engineering or workmanship of any project. The design professional determines, at its sole discretion, whether this detail or a functionally equivalent alternative is best suited for the project. Use of a functionally equivalent detail does not violate Dryvit's warranty. This detail is subject to change without notice. Contact Dryvit Systems Canada to ensure you have the most recent version.

Notes:

1. These details apply to both Outsulation MD and Outsulation MD (NC). Outsulation® MD (NC) requires the use of Primus® DM or Genesis™ DM as the base coat/adhesive.

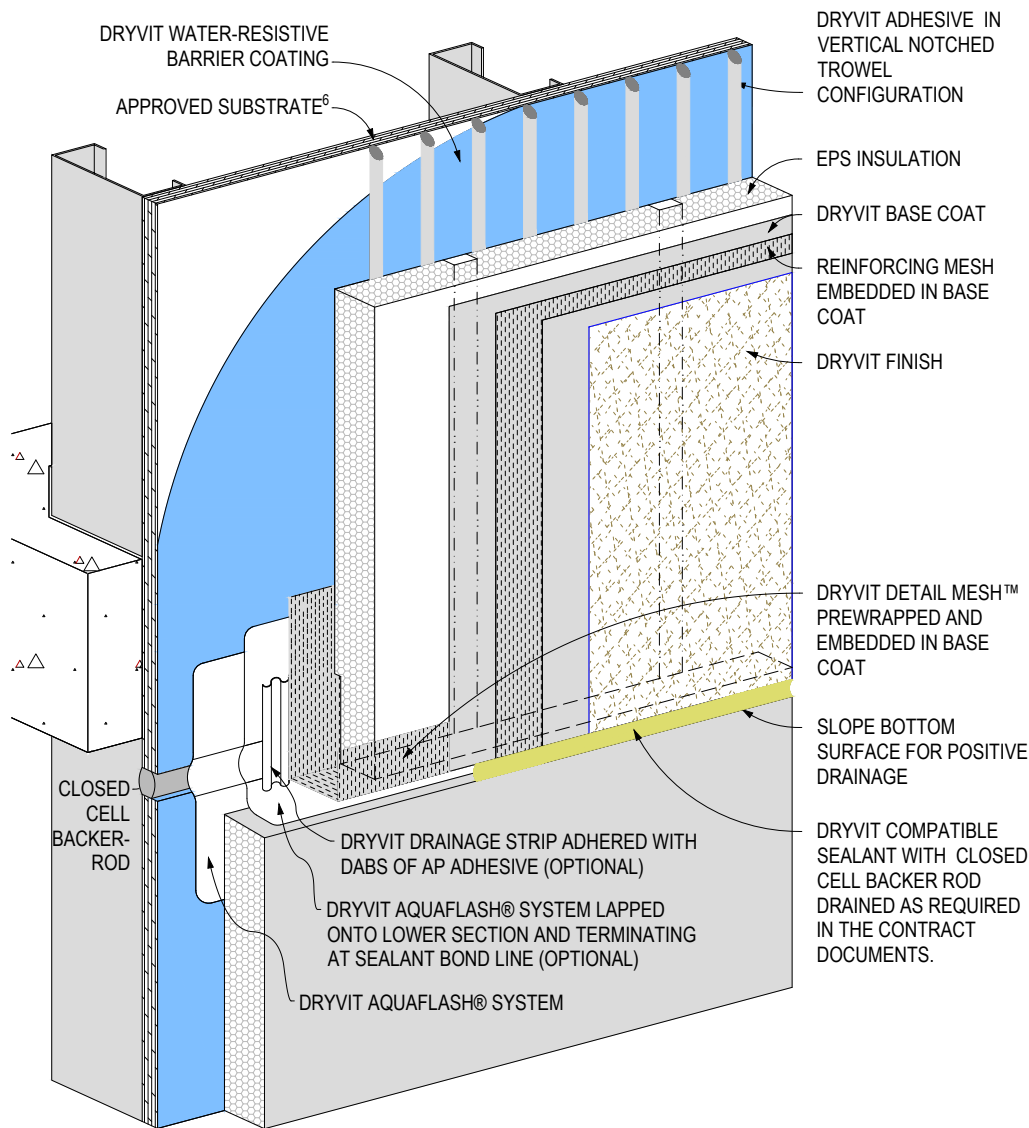
2. Dryvit recommends that ground floor applications and all facades exposed to abnormal stress, high traffic, or deliberate impact have the base coat reinforced with Panzer® 15 or 20 Mesh prior to Standard Mesh. Location of high impact zones should be indicated in contract drawings.

3. Expansion joint in the Outsulation® MD (NC) System is necessary where significant differential movement is expected at floor lines.

4. Locate external sealant joint within 50mm (2") of break in sheathing.

5. Apply Dryvit AquaFlash System over prepared joint at change in substrate.

6. Although not illustrated, substrates include wood framing and wood-based sheathings. Refer to Outsulation MD Specifications, DSC168, as well as details for Outsulation MD for Residential Construction DSC106.



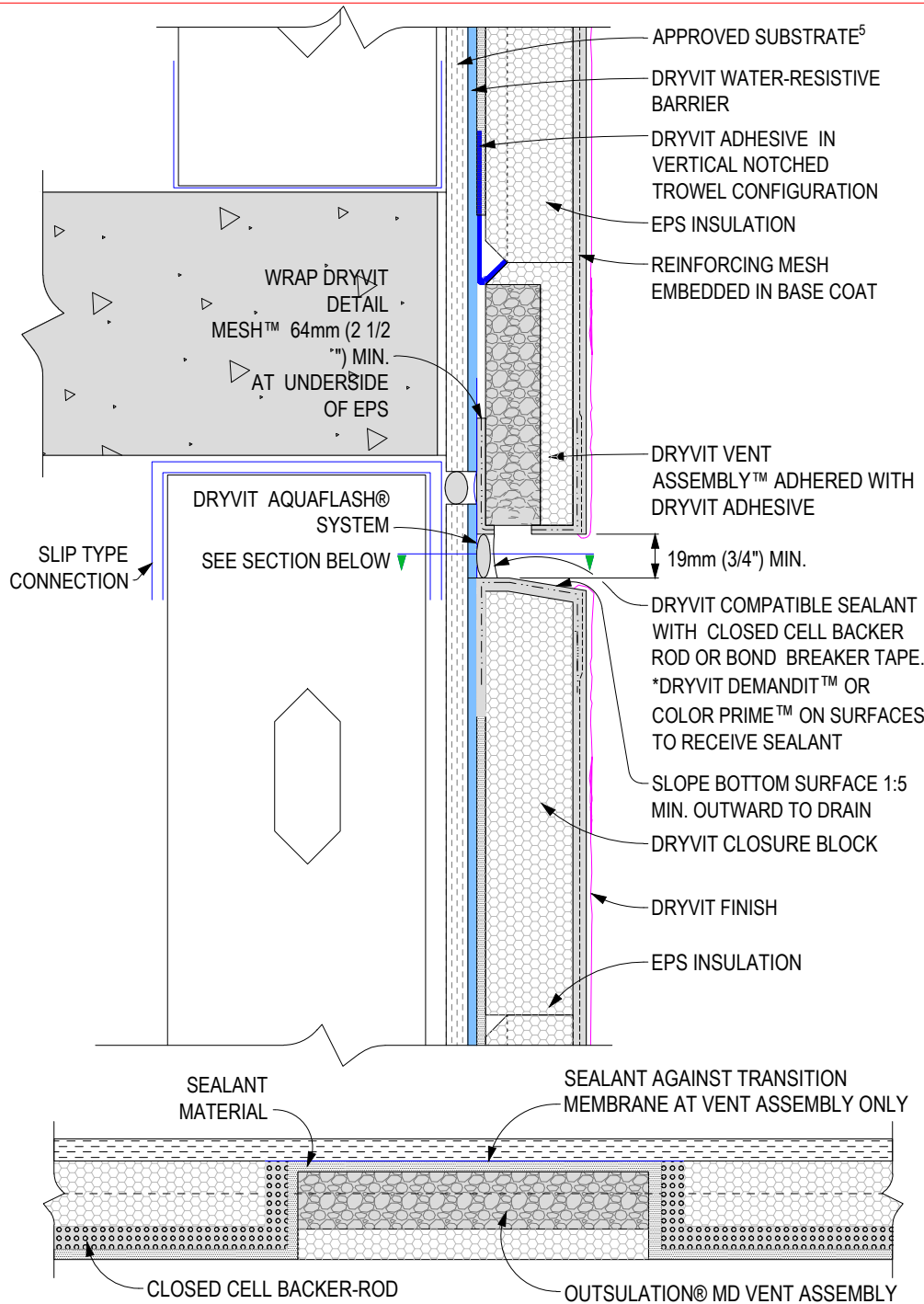
R-006-08-20

HORIZONTAL EXPANSION JOINT - DRAINAGE OPTIONS 1 & 2



129 Ringwood Drive
Stouffville, Ontario L4A 8C1
800-263-3308
www.dryvit.ca

The architecture, engineering and design of the project using the Dryvit products is the responsibility of the project's design professional. All systems must comply with local building codes and standards. This detail is for general information and guidance only and Dryvit Systems Canada specifically disclaims any liability for the use of this detail and/or for the architecture, design, engineering or workmanship of any project. The design professional determines, at its sole discretion, whether this detail or a functionally equivalent alternative is best suited for the project. Use of a functionally equivalent detail does not violate Dryvit's warranty. This detail is subject to change without notice. Contact Dryvit Systems Canada to ensure you have the most recent version.



Notes:

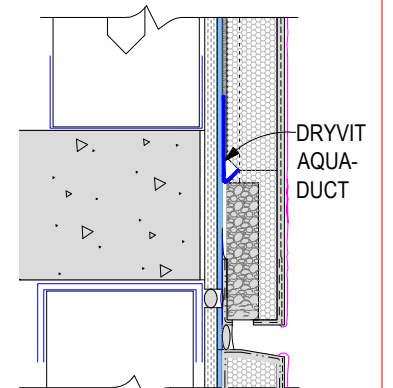
1. These details apply to both Outsulation MD and Outsulation MD (NC). Outsulation® MD (NC) requires the use of Primus® DM or Genesis™ DM as the base coat/adhesive.

2. Dryvit recommends that ground floor applications and all facades exposed to abnormal stress, high traffic, or deliberate impact have the base coat reinforced with Panzer® 15 or 20 Mesh prior to Standard Mesh. Location of high impact zones should be indicated in contract drawings.

3. Expansion joint in the Outsulation® MD System is necessary where significant differential movement is expected at floor lines.

4. Locate external sealant joint within 50mm (2") of break in sheathing.

5. Although not illustrated, substrates include wood framing and wood-based sheathings. Refer to Outsulation MD Specifications, DSC168, as well as details for Outsulation MD for Residential Construction DSC106.



Section View

R-005-01-18

HORIZONTAL EXPANSION JOINT - DRAINAGE OPTION 3



The architecture, engineering and design of the project using the Dryvit products is the responsibility of the project's design professional. All systems must comply with local building codes and standards. This detail is for general information and guidance only and Dryvit Systems Canada specifically disclaims any liability for the use of this detail and/or for the architecture, design, engineering or workmanship of any project. The design professional determines, at its sole discretion, whether this detail or a functionally equivalent alternative is best suited for the project. Use of a functionally equivalent detail does not violate Dryvit's warranty. This detail is subject to change without notice. Contact Dryvit Systems Canada to ensure you have the most recent version.

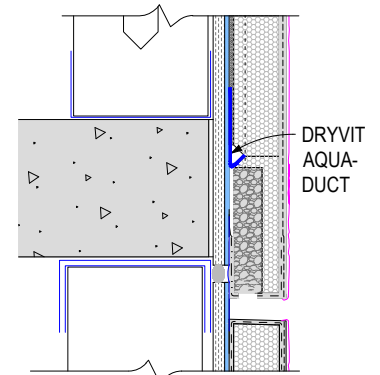
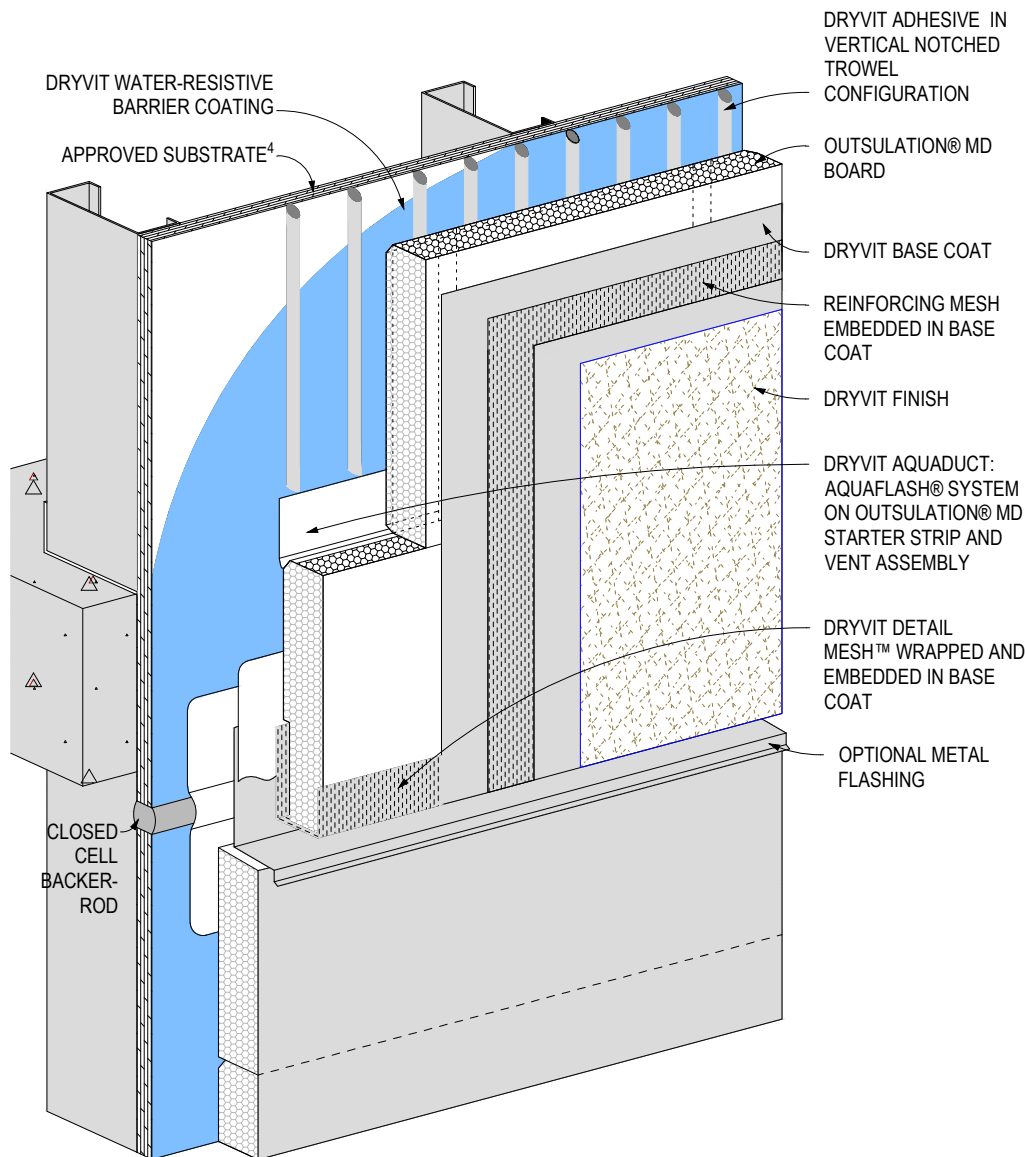
Notes:

1. These details apply to both Outsulation MD and Outsulation MD (NC). Outsulation® MD (NC) requires the use of Primus® DM or Genesis™ DM as the base coat/adhesive.

2. Dryvit recommends that ground floor applications and all facades exposed to abnormal stress, high traffic, or deliberate impact have the base coat reinforced with Panzer® 15 or 20 Mesh prior to Standard Mesh. Location of high impact zones should be indicated in contract drawings.

3. Metal flashing can be substituted with AquaFlash, as per the contract documents.

4. Although not illustrated, substrates include wood framing and wood-based sheathings. Refer to Outsulation MD Specifications, DSC168, as well as details for Outsulation MD for Residential Construction DSC106.



Section View

R-005-01-18

HORIZONTAL EXPANSION JOINT - DRAINAGE OPTION 3 WITH THROUGH WALL FLASHING



129 Ringwood Drive
Stouffville, Ontario L4A 8C1
800-263-3308
www.dryvit.ca

The architecture, engineering and design of the project using the Dryvit products is the responsibility of the project's design professional. All systems must comply with local building codes and standards. This detail is for general information and guidance only and Dryvit Systems Canada specifically disclaims any liability for the use of this detail and/or for the architecture, design, engineering or workmanship of any project. The design professional determines, at its sole discretion, whether this detail or a functionally equivalent alternative is best suited for the project. Use of a functionally equivalent detail does not violate Dryvit's warranty. This detail is subject to change without notice. Contact Dryvit Systems Canada to ensure you have the most recent version.

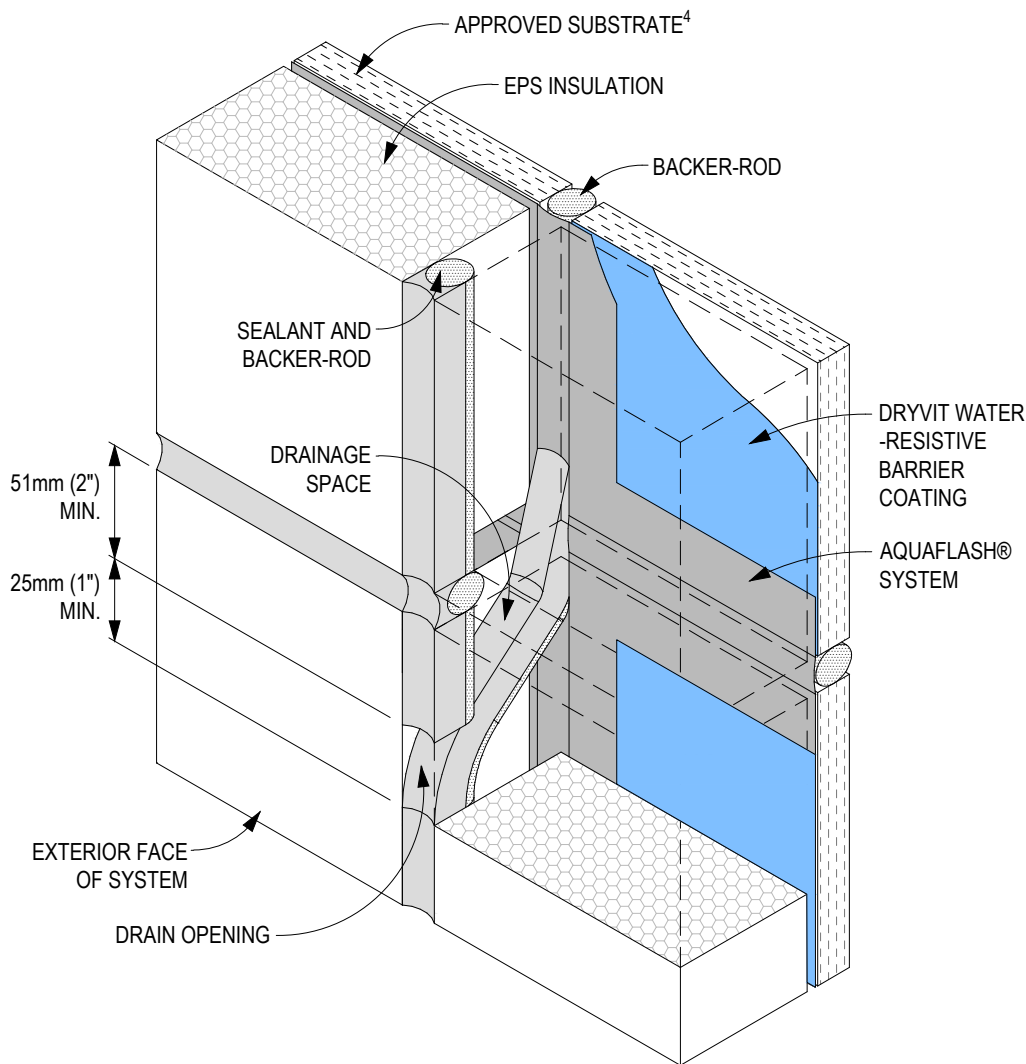
Notes:

1. These details apply to both Outsulation MD and Outsulation MD (NC). Outsulation® MD (NC) requires the use of Primus® DM or Genesis™ DM as the base coat/adhesive.

2. Dryvit recommends that ground floor applications and all facades exposed to abnormal stress, high traffic, or deliberate impact have the base coat reinforced with Panzer® 15 or 20 Mesh prior to Standard Mesh. Location of high impact zones should be indicated in contract drawings.

3. Dryvit Demandit™ or Color Prime™ on surfaces to receive sealant.

4. Although not illustrated, substrates include wood framing and wood-based sheathings. Refer to Outsulation MD Specifications, DSC168, as well as details for Outsulation MD for Residential Construction DSC106.



R-005-01-18

TWO-STAGE SEALANT JOINTS



129 Ringwood Drive
Stouffville, Ontario L4A 8C1
800-263-3308
www.dryvit.ca

The architecture, engineering and design of the project using the Dryvit products is the responsibility of the project's design professional. All systems must comply with local building codes and standards. This detail is for general information and guidance only and Dryvit Systems Canada specifically disclaims any liability for the use of this detail and/or for the architecture, design, engineering or workmanship of any project. The design professional determines, at its sole discretion, whether this detail or a functionally equivalent alternative is best suited for the project. Use of a functionally equivalent detail does not violate Dryvit's warranty. This detail is subject to change without notice. Contact Dryvit Systems Canada to ensure you have the most recent version.

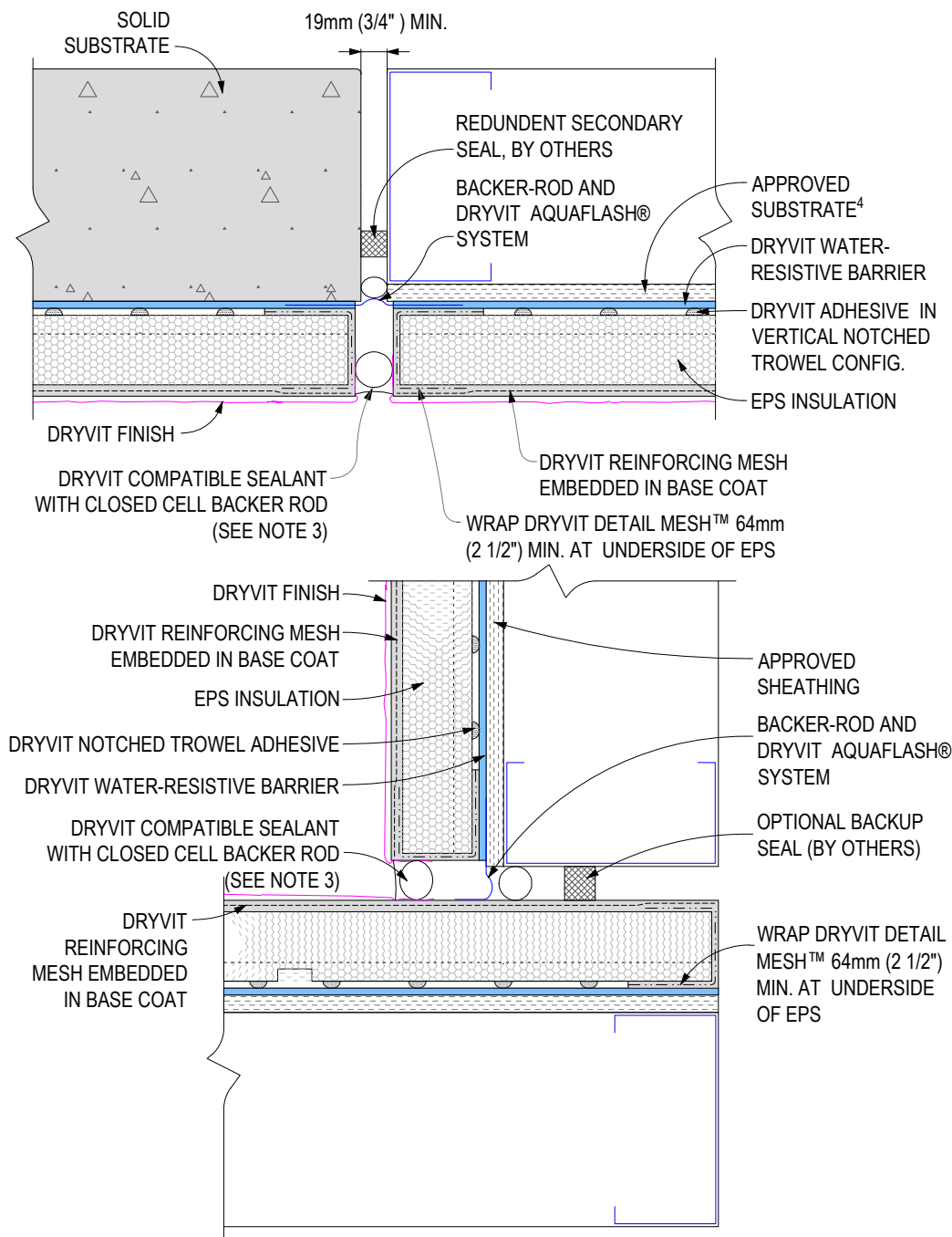
Notes:

1. These details apply to both Outsulation MD and Outsulation MD (NC). Outsulation® MD (NC) requires the use of Primus® DM or Genesis™ DM as the base coat/adhesive.

2. Dryvit recommends that ground floor applications and all facades exposed to abnormal stress, high traffic, or deliberate impact have the base coat reinforced with Panzer® 15 or 20 Mesh prior to Standard Mesh. Location of high impact zones should be indicated in contract drawings.

3. Dryvit Demandit™ or Color Prime™ on surfaces to receive sealant.

4. Although not illustrated, substrates include wood framing and wood-based sheathings. Refer to Outsulation MD Specifications, DSC168, as well as details for Outsulation MD for Residential Construction DSC106.



R-005-01-18

STRUCTURAL EXPANSION JOINTS



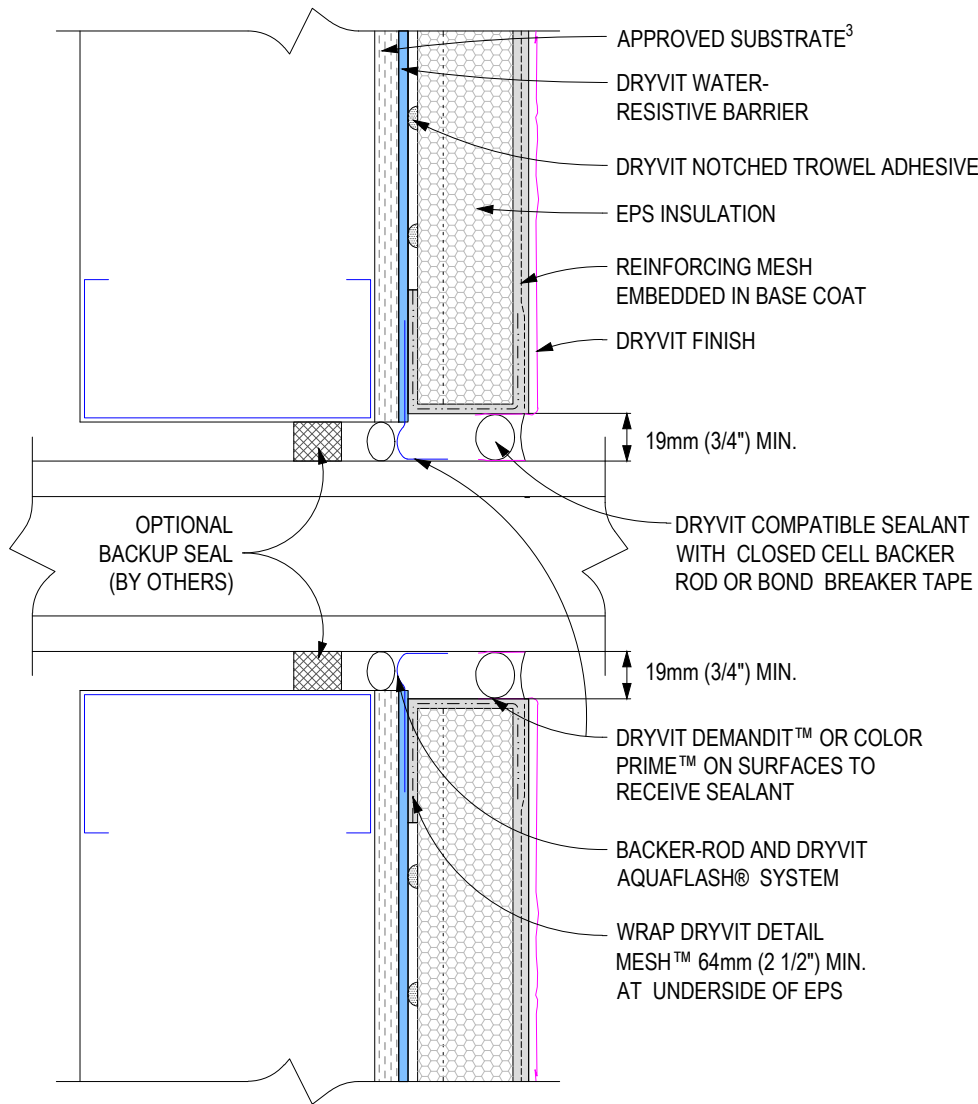
The architecture, engineering and design of the project using the Dryvit products is the responsibility of the project's design professional. All systems must comply with local building codes and standards. This detail is for general information and guidance only and Dryvit Systems Canada specifically disclaims any liability for the use of this detail and/or for the architecture, design, engineering or workmanship of any project. The design professional determines, at its sole discretion, whether this detail or a functionally equivalent alternative is best suited for the project. Use of a functionally equivalent detail does not violate Dryvit's warranty. This detail is subject to change without notice. Contact Dryvit Systems Canada to ensure you have the most recent version.

Notes:

1. These details apply to both Outsulation MD and Outsulation MD (NC). Outsulation® MD (NC) requires the use of Primus® DM or Genesis™ DM as the base coat/adhesive.

2. Dryvit recommends that ground floor applications and all facades exposed to abnormal stress, high traffic, or deliberate impact have the base coat reinforced with Panzer® 15 or 20 Mesh prior to Standard Mesh. Location of high impact zones should be indicated in contract drawings.

3. Although not illustrated, substrates include wood framing and wood-based sheathings. Refer to Outsulation MD Specifications, DSC168, as well as details for Outsulation MD for Residential Construction DSC106.



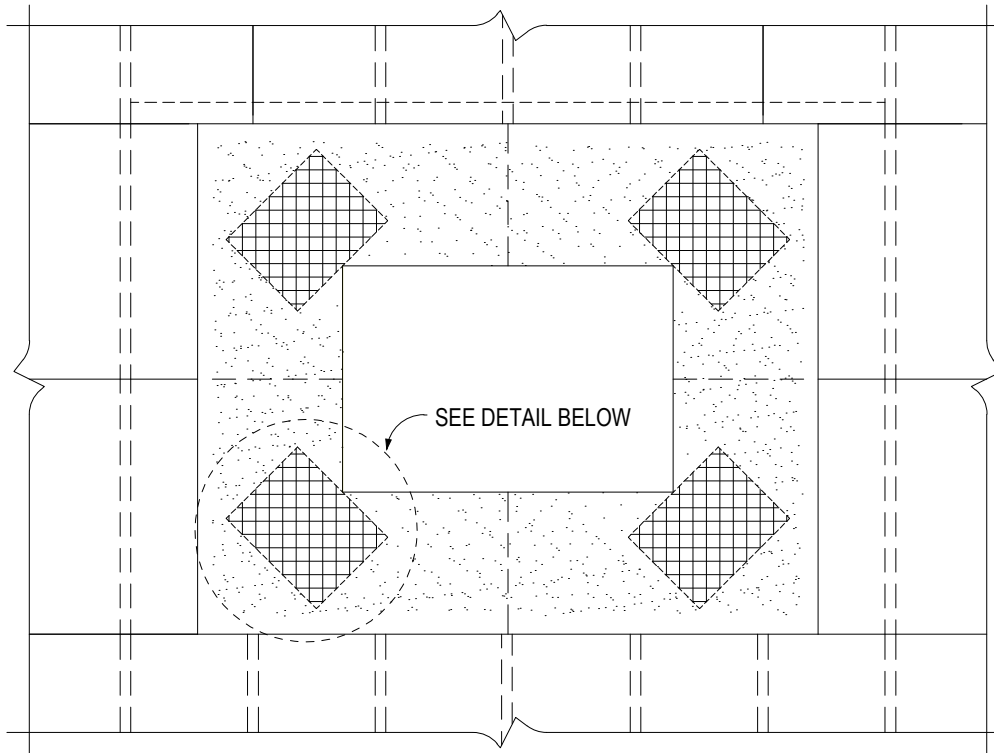
R-005-01-18

PENETRATIONS - CROSS SECTION



129 Ringwood Drive
Stouffville, Ontario L4A 8C1
800-263-3308
www.dryvit.ca

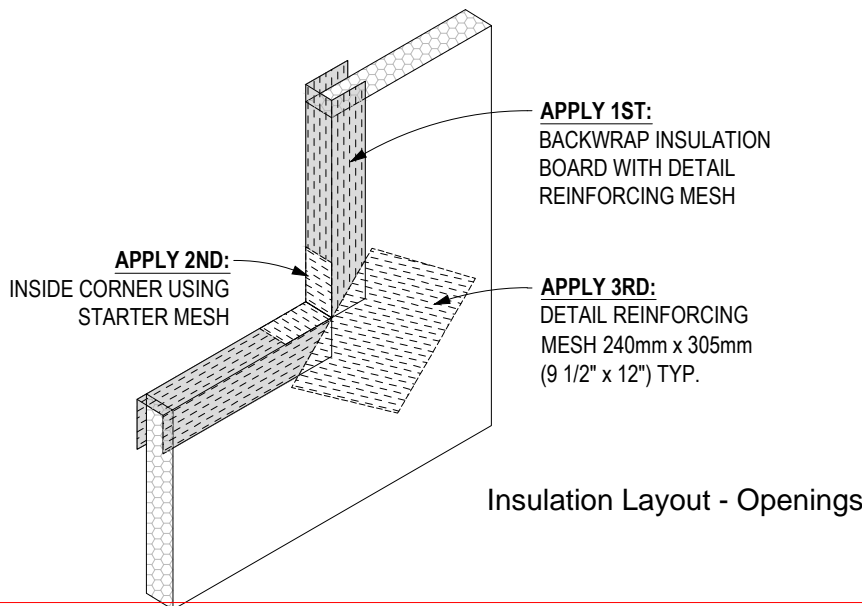
The architecture, engineering and design of the project using the Dryvit products is the responsibility of the project's design professional. All systems must comply with local building codes and standards. This detail is for general information and guidance only and Dryvit Systems Canada specifically disclaims any liability for the use of this detail and/or for the architecture, design, engineering or workmanship of any project. The design professional determines, at its sole discretion, whether this detail or a functionally equivalent alternative is best suited for the project. Use of a functionally equivalent detail does not violate Dryvit's warranty. This detail is subject to change without notice. Contact Dryvit Systems Canada to ensure you have the most recent version.



Notes:

1. These details apply to both Outsulation MD and Outsulation MD (NC). Outsulation® MD (NC) requires the use of Primus® DM or Genesis™ DM as the base coat/adhesive.

2. Dryvit recommends that ground floor applications and all facades exposed to abnormal stress, high traffic, or deliberate impact have the base coat reinforced with Panzer® 15 or 20 Mesh prior to Standard Mesh. Location of high impact zones should be indicated in contract drawings.

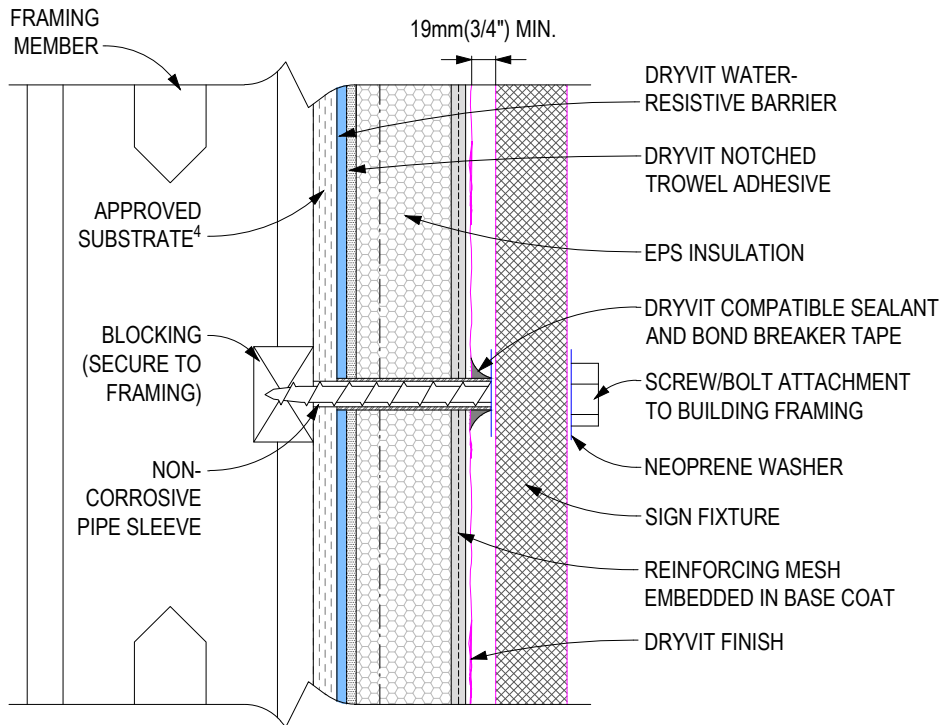


R-005-01-18

INSULATION LAYOUT - OPENINGS



The architecture, engineering and design of the project using the Dryvit products is the responsibility of the project's design professional. All systems must comply with local building codes and standards. This detail is for general information and guidance only and Dryvit Systems Canada specifically disclaims any liability for the use of this detail and/or for the architecture, design, engineering or workmanship of any project. The design professional determines, at its sole discretion, whether this detail or a functionally equivalent alternative is best suited for the project. Use of a functionally equivalent detail does not violate Dryvit's warranty. This detail is subject to change without notice. Contact Dryvit Systems Canada to ensure you have the most recent version.



Notes:

1. These details apply to both Outsulation MD and Outsulation MD (NC). Outsulation® MD (NC) requires the use of Primus® DM or Genesis™ DM as the base coat/adhesive.

2. Dryvit recommends that ground floor applications and all facades exposed to abnormal stress, high traffic, or deliberate impact have the base coat reinforced with Panzer® 15 or 20 Mesh prior to Standard Mesh. Location of high impact zones should be indicated in contract drawings.

3. Entire perimeter of pipe sleeve is caulked to prevent water entry into wall.

4. Although not illustrated, substrates include wood framing and wood-based sheathings. Refer to Outsulation MD Specifications, DSC168, as well as details for Outsulation MD for Residential Construction DSC106.

Installation Instructions:

1. Pre-drill through EIFS stopping at water-resistive barrier (WRB).
2. Cut sleeve to equal depth of system from WRB to outside face.
3. Gun neutral cure silicone sealant into hole and insert sleeve.
4. While sealant is wet, install fastener and tool sealant around edges as shown.

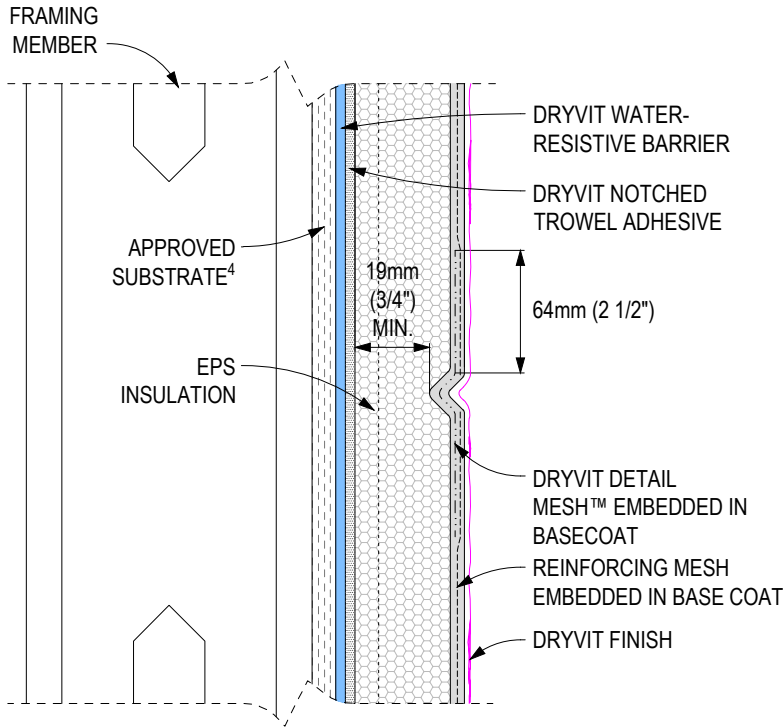
R-005-01-18

SIGN ATTACHMENT



129 Ringwood Drive
Stouffville, Ontario L4A 8C1
800-263-3308
www.dryvit.ca

The architecture, engineering and design of the project using the Dryvit products is the responsibility of the project's design professional. All systems must comply with local building codes and standards. This detail is for general information and guidance only and Dryvit Systems Canada specifically disclaims any liability for the use of this detail and/or for the architecture, design, engineering or workmanship of any project. The design professional determines, at its sole discretion, whether this detail or a functionally equivalent alternative is best suited for the project. Use of a functionally equivalent detail does not violate Dryvit's warranty. This detail is subject to change without notice. Contact Dryvit Systems Canada to ensure you have the most recent version.



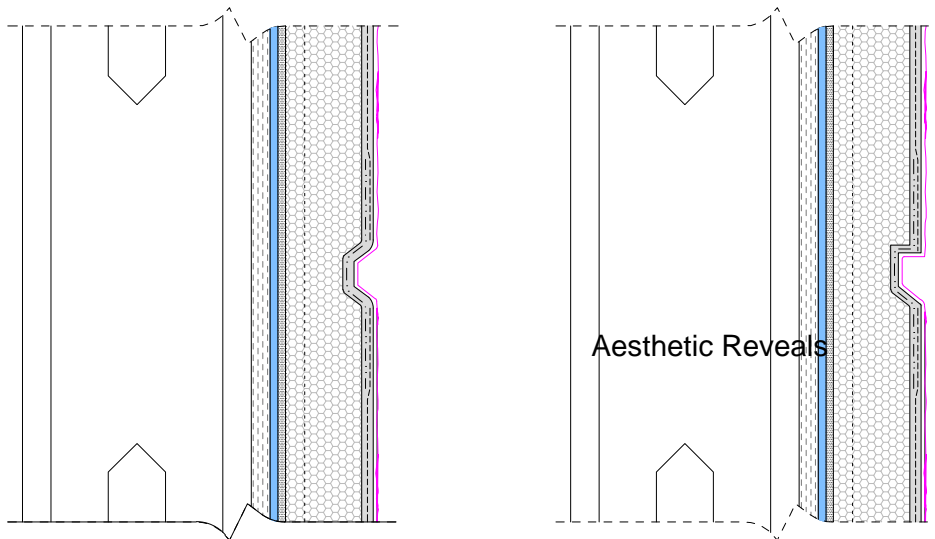
Notes:

1. These details apply to both Outsulation MD and Outsulation MD (NC). Outsulation® MD (NC) requires the use of Primus® DM or Genesis™ DM as the base coat/adhesive.

2. Dryvit recommends that ground floor applications and all facades exposed to abnormal stress, high traffic, or deliberate impact have the base coat reinforced with Panzer® 15 or 20 Mesh prior to Standard Mesh. Location of high impact zones should be indicated in contract drawings.

3. Bottom ends of reveals are to be sloped for positive drainage.

4. Although not illustrated, substrates include wood framing and wood-based sheathings. Refer to Outsulation MD Specifications, DSC168, as well as details for Outsulation MD for Residential Construction DSC106.



R-005-01-18

AESTHETIC REVEALS



129 Ringwood Drive
Stouffville, Ontario L4A 8C1
800-263-3308
www.dryvit.ca

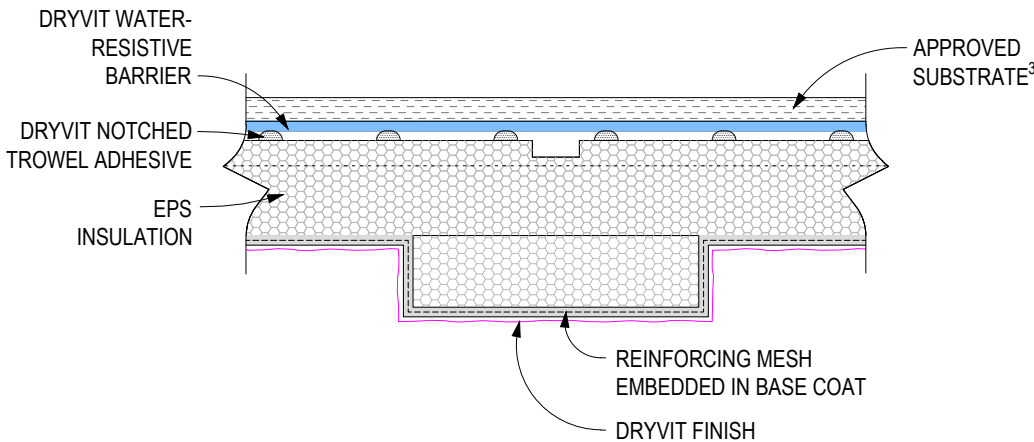
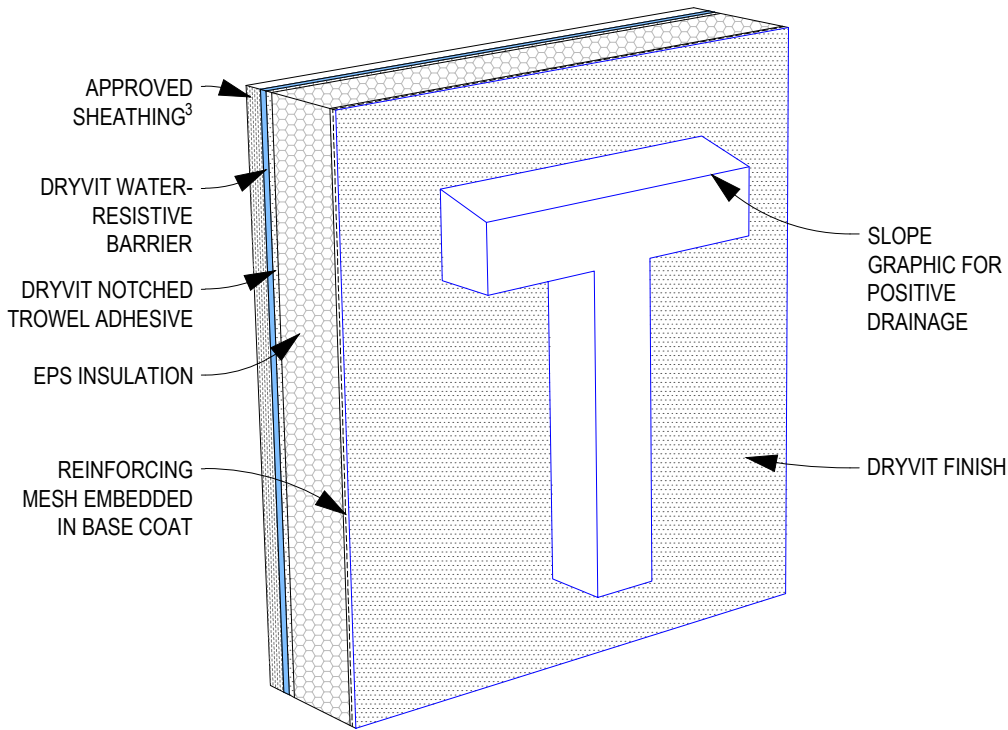
The architecture, engineering and design of the project using the Dryvit products is the responsibility of the project's design professional. All systems must comply with local building codes and standards. This detail is for general information and guidance only and Dryvit Systems Canada specifically disclaims any liability for the use of this detail and/or for the architecture, design, engineering or workmanship of any project. The design professional determines, at its sole discretion, whether this detail or a functionally equivalent alternative is best suited for the project. Use of a functionally equivalent detail does not violate Dryvit's warranty. This detail is subject to change without notice. Contact Dryvit Systems Canada to ensure you have the most recent version.

Notes:

1. These details apply to both Outsulation MD and Outsulation MD (NC). Outsulation® MD (NC) requires the use of Primus® DM or Genesis™ DM as the base coat/adhesive.

2. Dryvit recommends that ground floor applications and all facades exposed to abnormal stress, high traffic, or deliberate impact have the base coat reinforced with Panzer® 15 or 20 Mesh prior to Standard Mesh. Location of high impact zones should be indicated in contract drawings.

3. Although not illustrated, substrates include wood framing and wood-based sheathings. Refer to Outsulation MD Specifications, DSC168, as well as details for Outsulation MD for Residential Construction DSC106.



R-005-01-18

PROJECTING SHAPES



129 Ringwood Drive
Stouffville, Ontario L4A 8C1
800-263-3308
www.dryvit.ca

The architecture, engineering and design of the project using the Dryvit products is the responsibility of the project's design professional. All systems must comply with local building codes and standards. This detail is for general information and guidance only and Dryvit Systems Canada specifically disclaims any liability for the use of this detail and/or for the architecture, design, engineering or workmanship of any project. The design professional determines, at its sole discretion, whether this detail or a functionally equivalent alternative is best suited for the project. Use of a functionally equivalent detail does not violate Dryvit's warranty. This detail is subject to change without notice. Contact Dryvit Systems Canada to ensure you have the most recent version.

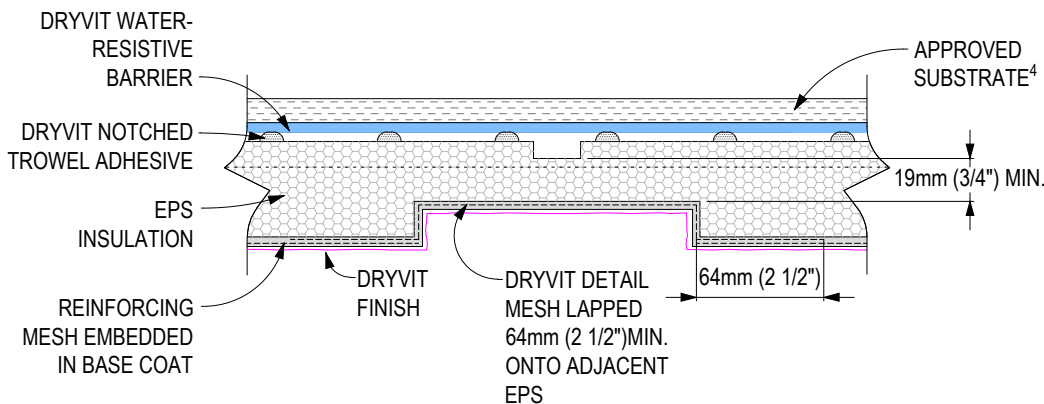
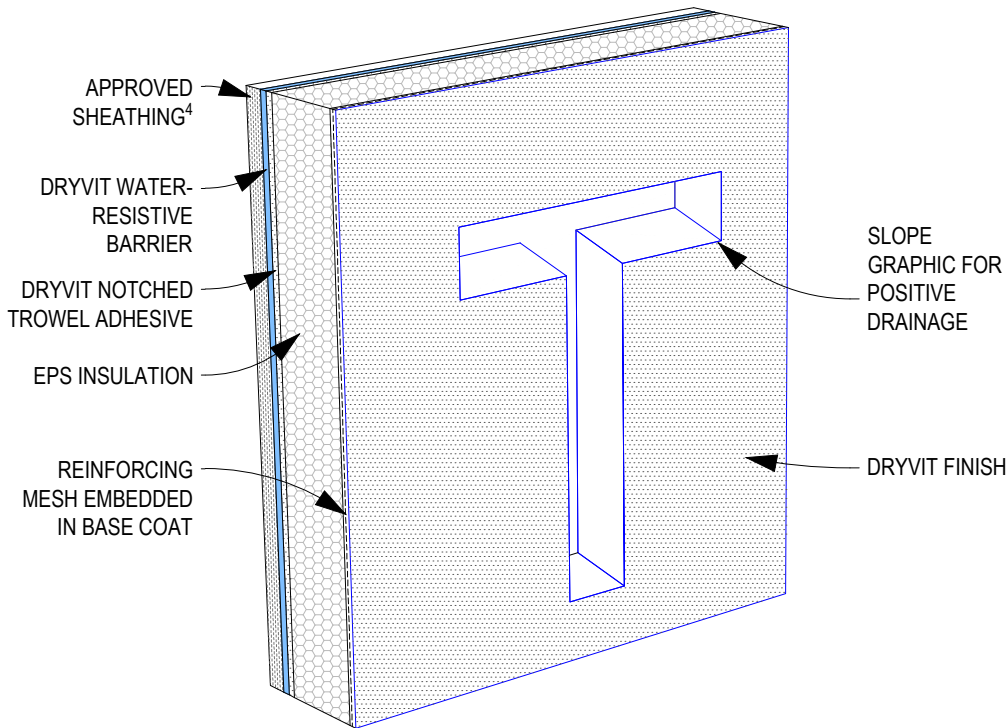
Notes:

1. These details apply to both Outsulation MD and Outsulation MD (NC). Outsulation® MD (NC) requires the use of Primus® DM or Genesis™ DM as the base coat/adhesive.

2. Dryvit recommends that ground floor applications and all facades exposed to abnormal stress, high traffic, or deliberate impact have the base coat reinforced with Panzer® 15 or 20 Mesh prior to Standard Mesh. Location of high impact zones should be indicated in contract drawings.

3. Bottom edges of reveals are to be sloped for positive drainage.

4. Although not illustrated, substrates include wood framing and wood-based sheathings. Refer to Outsulation MD Specifications, DSC168, as well as details for Outsulation MD for Residential Construction DSC106.



R-005-01-18

RECESSED REVEALS



129 Ringwood Drive
Stouffville, Ontario L4A 8C1
800-263-3308
www.dryvit.ca

The architecture, engineering and design of the project using the Dryvit products is the responsibility of the project's design professional. All systems must comply with local building codes and standards. This detail is for general information and guidance only and Dryvit Systems Canada specifically disclaims any liability for the use of this detail and/or for the architecture, design, engineering or workmanship of any project. The design professional determines, at its sole discretion, whether this detail or a functionally equivalent alternative is best suited for the project. Use of a functionally equivalent detail does not violate Dryvit's warranty. This detail is subject to change without notice. Contact Dryvit Systems Canada to ensure you have the most recent version.