

Outsulation® PD (NC) System Installation Details



129 Ringwood Drive
Stouffville, Ontario L4A 8C1
800-263-3308
www.dryvit.ca

The architecture, engineering and design of the project using the Dryvit products is the responsibility of the project's design professional. All systems must comply with local building codes and standards. This detail is for general information and guidance only and Dryvit Systems Canada specifically disclaims any liability for the use of this detail and/or for the architecture, design, engineering or workmanship of any project. The design professional determines, at its sole discretion, whether this detail or a functionally equivalent alternative is best suited for the project. Use of a functionally equivalent detail does not violate Dryvit's warranty. This detail is subject to change without notice. Contact Dryvit Systems Canada to ensure you have the most recent version.

Outsulation® PD (NC) System

DETAIL

OPD.01	SYSTEM
OPD.02	BOARD PROFILE & ADHESIVE PATTERN
OPD.03A	BUILDING FACADE
OPD.03B	OUTSIDE CORNER - BOARD LAYOUT
OPD.04	FOUNDATION
OPD.05	TERMINATION AT CONCRETE
OPD.06	PROTECTION OF ROUGH OPENINGS
OPD.07A	HEAD / SILL - FOR WINDOW SPANS LESS THAN 10' (3.0M)
OPD.07B	HEAD / SILL - FOR WINDOW SPANS 10' OR GREATER
OPD.08	JAMB
OPD.09	PARAPET - CAP FLASHING
OPD.10	PARAPET - SOLID SUBSTRATE, METAL COPING
OPD.11	SOFFIT / FASCIA INTERSECTION
OPD.12	INSIDE / OUTSIDE CORNERS
OPD.13	OUTSIDE CORNER - HIGH IMPACT
OPD.14	HORIZONTAL EXPANSION JOINT
OPD.15A	HORIZONTAL SLIP JOINT
OPD.15B	ALTERNATE FLOOR LINE JOINT
OPD.16	HORIZONTAL SLIP JOINT - EXTENDED 2D VIEW
OPD.17	HORIZONTAL SLIP JOINT - OPEN JOINT WITH FLASHING OPTION
OPD.18	TWO-STAGE JOINT
OPD.19	STRUCTURAL EXPANSION JOINTS
OPD.20	PENETRATIONS - CROSS SECTION
OPD.21	INSULATION LAYOUT - OPENINGS
OPD.22	SIGN ATTACHMENT
OPD.23	AESTHETIC REVEALS
OPD.24	PROJECTING GRAPHICS
OPD.25	RECESSED GRAPHICS

NOTE

DRYVIT MAKES NO REPRESENTATION REGARDING CONFORMITY OF ITS SUGGESTIONS TO MODEL BUILDING CODES, ENGINEERING CRITERIA, SPECIFIC APPLICATIONS, OR PROJECT LOCATIONS. ALL COMPONENTS INDICATED IN ILLUSTRATIONS, AS WELL AS OTHERS THAT MAY BE REQUIRED FOR THE INTEGRITY OF THE SYSTEM SHALL BE DESIGNED, DETAILED, AND ENGINEERED BY REPRESENTATIVES OF THE ARCHITECT, OWNER, OR CONTRACTOR TO BE IN CONFORMANCE WITH MODEL CODES, ARCHITECTURAL, AND ENGINEERING REQUIREMENTS PERTAINING TO SPECIFIC BUILDING PROJECTS.

DRYVIT MAKES NO WARRANTY, EXPRESSED OR IMPLIED, AS TO THE ARCHITECTURAL DESIGN, ENGINEERING, OR WORKMANSHIP OF PROJECTS UTILIZING DRYVIT SYSTEMS OR PRODUCTS.

THE LIABILITIES OF DRYVIT SHALL BE AS STATED IN THE OUTSULATION® PD LIMITED COMMERCIAL WARRANTY. CONTACT DRYVIT FOR A FULL AND COMPLETE COPY OF THE WARRANTY.

R-006-01-18

TABLE OF CONTENTS



129 Ringwood Drive
Stouffville, Ontario L4A 8C1
800-263-3308
www.dryvit.ca

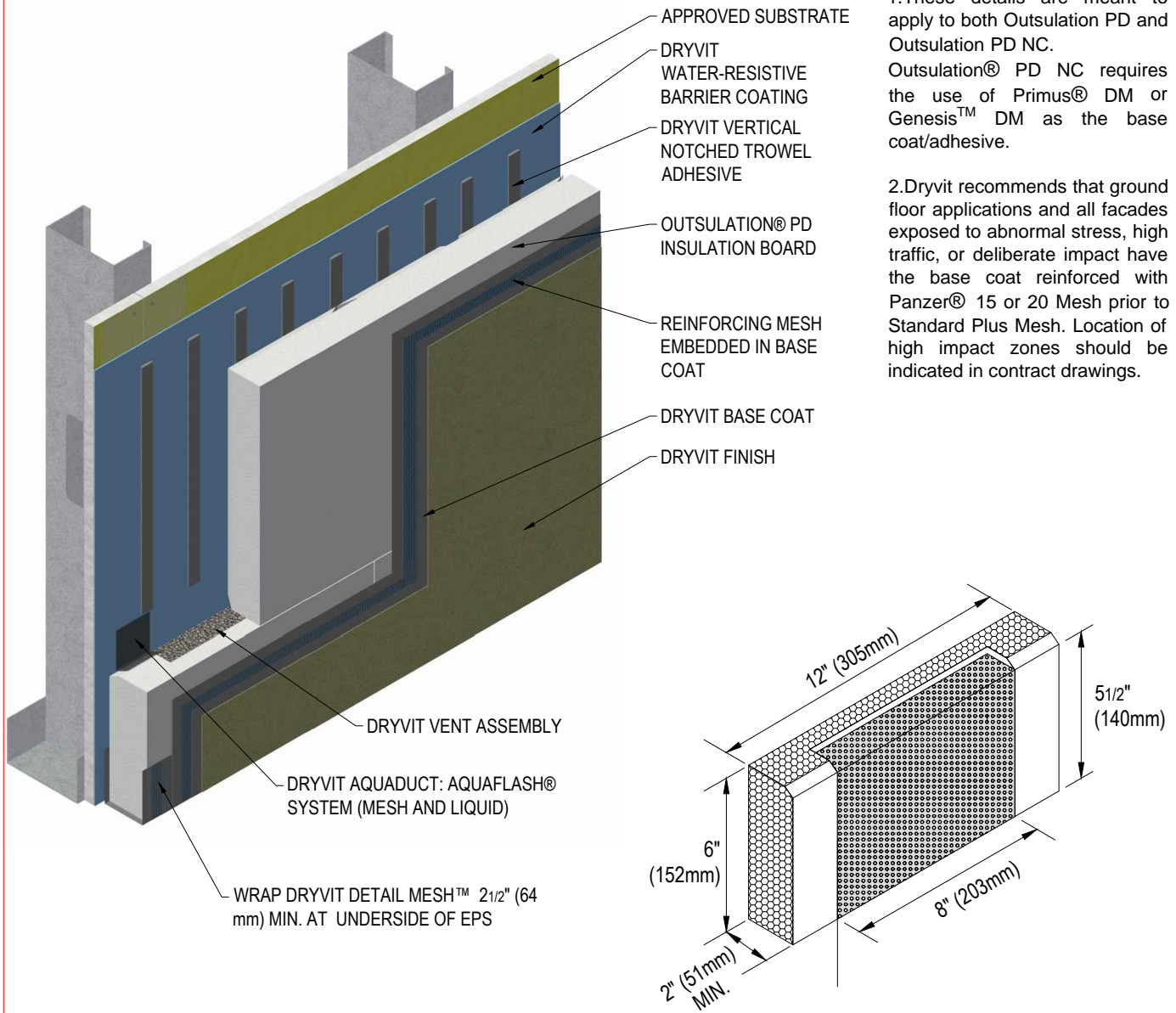
The architecture, engineering and design of the project using the Dryvit products is the responsibility of the project's design professional. All systems must comply with local building codes and standards. This detail is for general information and guidance only and Dryvit Systems Canada specifically disclaims any liability for the use of this detail and/or for the architecture, design, engineering or workmanship of any project. The design professional determines, at its sole discretion, whether this detail or a functionally equivalent alternative is best suited for the project. Use of a functionally equivalent detail does not violate Dryvit's warranty. This detail is subject to change without notice. Contact Dryvit Systems Canada to ensure you have the most recent version.

Notes:

1. These details are meant to apply to both Outsulation PD and Outsulation PD NC.

Outsulation® PD NC requires the use of Primus® DM or Genesis™ DM as the base coat/adhesive.

2. Dryvit recommends that ground floor applications and all facades exposed to abnormal stress, high traffic, or deliberate impact have the base coat reinforced with Panzer® 15 or 20 Mesh prior to Standard Plus Mesh. Location of high impact zones should be indicated in contract drawings.



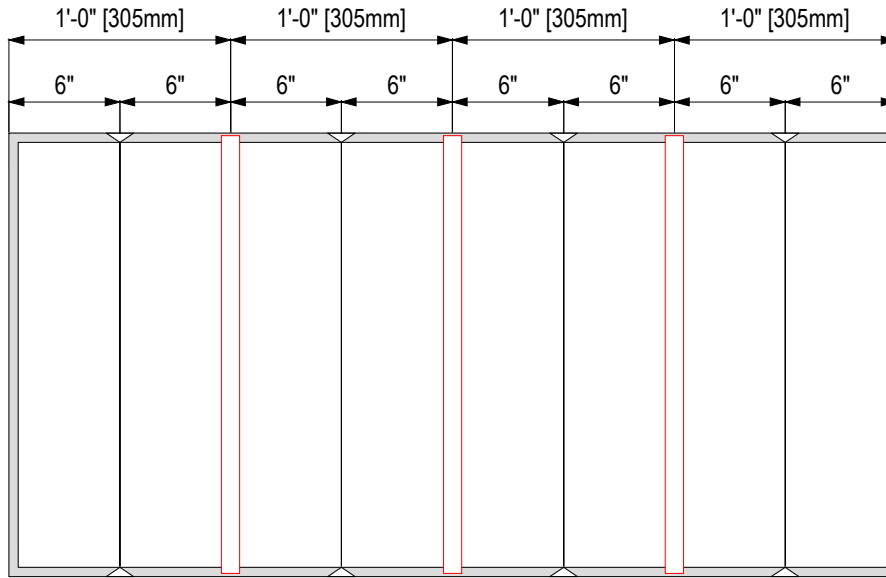
R-006-01-18

SYSTEM



129 Ringwood Drive
Stouffville, Ontario L4A 8C1
800-263-3308
www.dryvit.ca

The architecture, engineering and design of the project using the Dryvit products is the responsibility of the project's design professional. All systems must comply with local building codes and standards. This detail is for general information and guidance only and Dryvit Systems Canada specifically disclaims any liability for the use of this detail and/or for the architecture, design, engineering or workmanship of any project. The design professional determines, at its sole discretion, whether this detail or a functionally equivalent alternative is best suited for the project. Use of a functionally equivalent detail does not violate Dryvit's warranty. This detail is subject to change without notice. Contact Dryvit Systems Canada to ensure you have the most recent version.

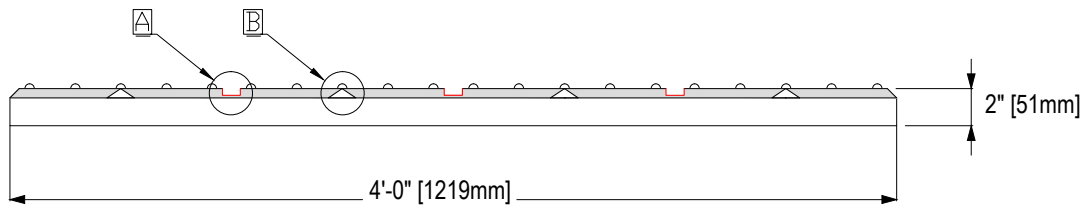


Notes:

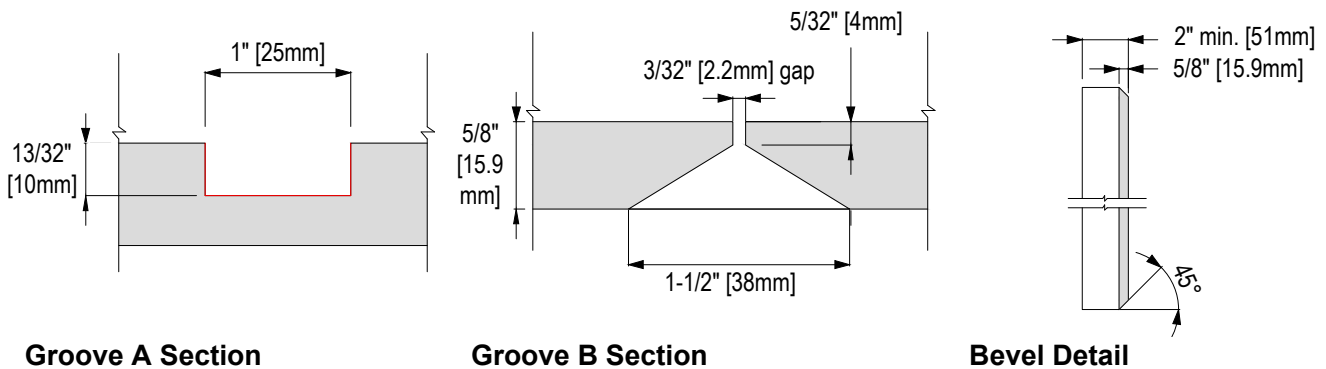
Notched trowel adhesive ribbons may vary from illustration.

A minimum of four (4) ribbons per 12" [305mm] section will be required.

Elevation view



Plan view and sample adhesive distribution pattern



R-006-01-18

BOARD PROFILE AND ADHESIVE PATTERN



The architecture, engineering and design of the project using the Dryvit products is the responsibility of the project's design professional. All systems must comply with local building codes and standards. This detail is for general information and guidance only and Dryvit Systems Canada specifically disclaims any liability for the use of this detail and/or for the architecture, design, engineering or workmanship of any project. The design professional determines, at its sole discretion, whether this detail or a functionally equivalent alternative is best suited for the project. Use of a functionally equivalent detail does not violate Dryvit's warranty. This detail is subject to change without notice. Contact Dryvit Systems Canada to ensure you have the most recent version.

Notes:

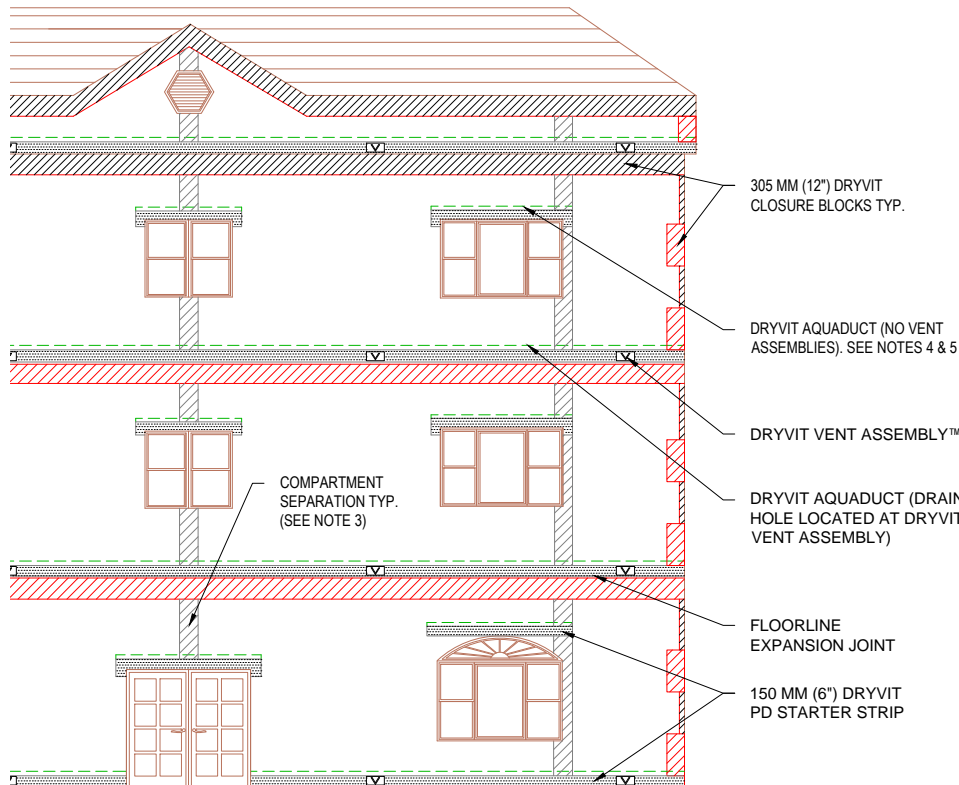
1. These details are meant to apply to both Outsulation PD and Outsulation PD NC. Outsulation® PD NC requires the use of Primus® DM or Genes is™ DM as the base coat/adhesive.

2. Compartment locations determined as per ASCE 7-95 and Dryvit Outsulation PD Specifications DSC601.

3. Vertical compartment separations not required where pressure equalization is not desired.

4. AquaDuct above to be notched a minimum of 3" to accommodate picture framing.

5. For windows/glazing greater than 10' wide, see detail OPD.07B



R-006-01-18

BUILDING FACADE



129 Ringwood Drive
Stouffville, Ontario L4A 8C1
800-263-3308
www.dryvit.ca

The architecture, engineering and design of the project using the Dryvit products is the responsibility of the project's design professional. All systems must comply with local building codes and standards. This detail is for general information and guidance only and Dryvit Systems Canada specifically disclaims any liability for the use of this detail and/or for the architecture, design, engineering or workmanship of any project. The design professional determines, at its sole discretion, whether this detail or a functionally equivalent alternative is best suited for the project. Use of a functionally equivalent detail does not violate Dryvit's warranty. This detail is subject to change without notice. Contact Dryvit Systems Canada to ensure you have the most recent version.

Notes:

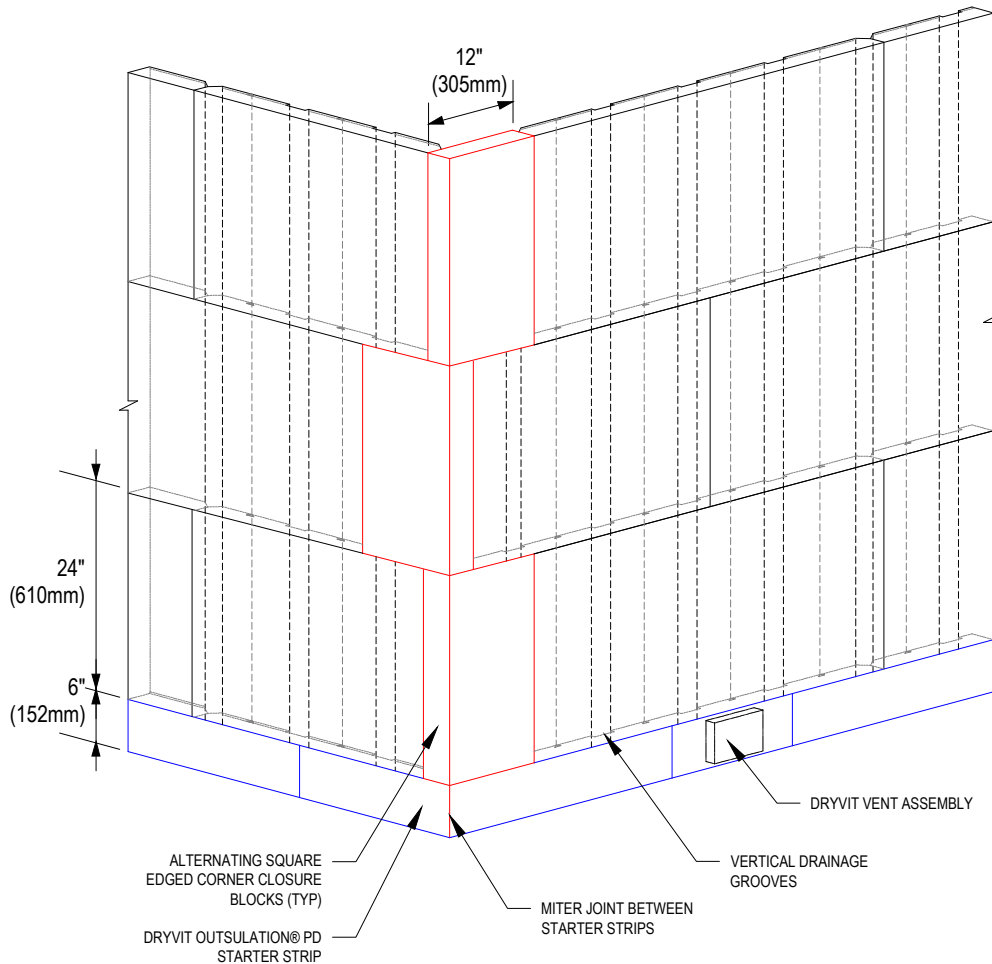
1. These details are meant to apply to both Outsulation PD and Outsulation PD NC. Outsulation® PD NC requires the use of Primus® DM or Genesis™ DM as the base coat/adhesive.

2. Dryvit recommends that ground floor applications and all facades exposed to abnormal stress, high traffic, or deliberate impact have the base coat reinforced with Panzer® 15 or 20 Mesh prior to Standard Plus Mesh. Location of high impact zones should be indicated in contract drawings.

3. Install square edged corner closure blocks on alternating sides of outside corners.

4. Alignment of vertical grooves not required.

5. Closure blocks not required at vertical terminations, i.e. expansion joints and vertical integration with other cladding.



R-006-01-18

OUTSIDE CORNER - BOARD LAYOUT



129 Ringwood Drive
 Stouffville, Ontario L4A 8C1
 800-263-3308
 www.dryvit.ca

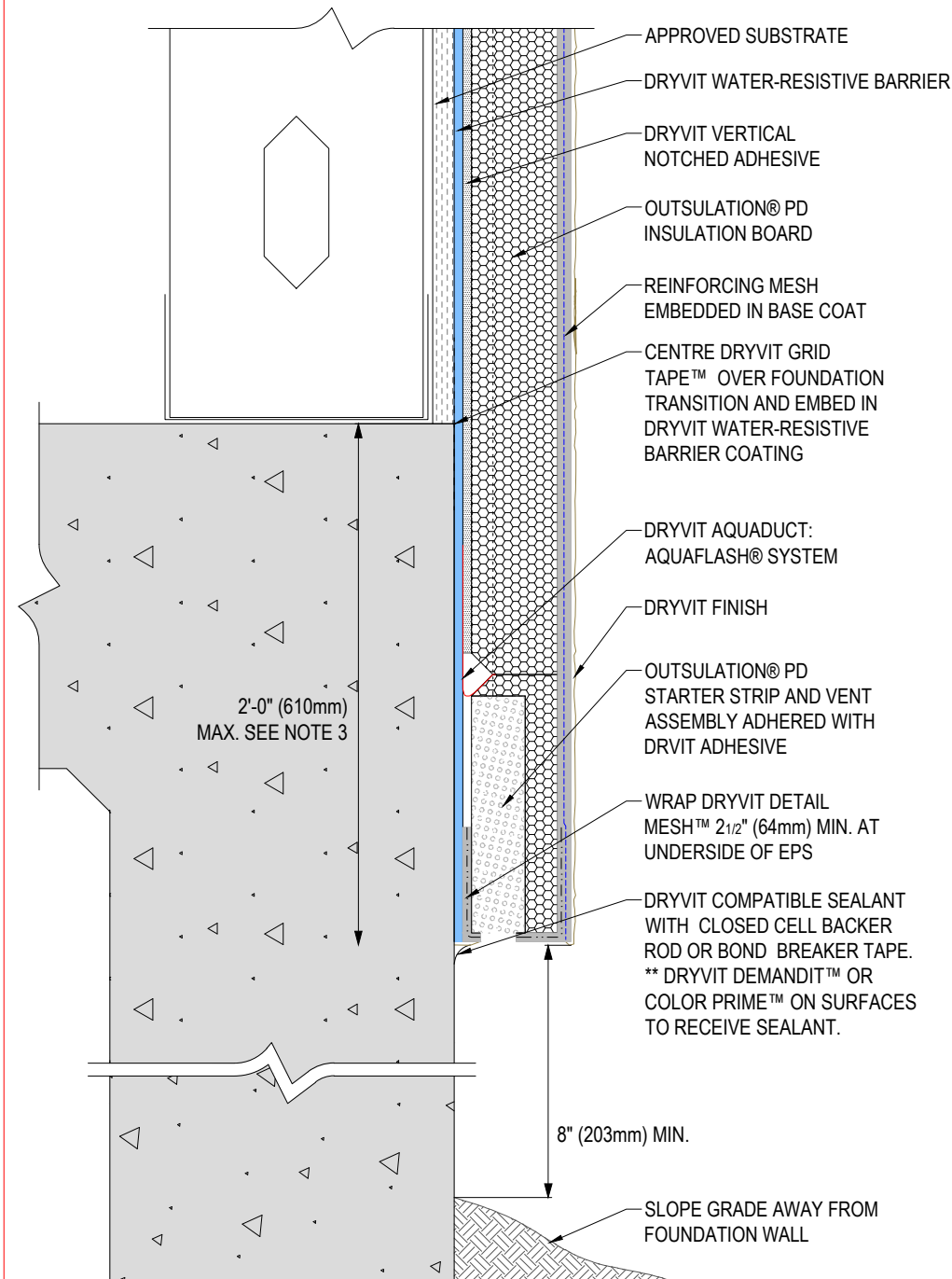
The architecture, engineering and design of the project using the Dryvit products is the responsibility of the project's design professional. All systems must comply with local building codes and standards. This detail is for general information and guidance only and Dryvit Systems Canada specifically disclaims any liability for the use of this detail and/or for the architecture, design, engineering or workmanship of any project. The design professional determines, at its sole discretion, whether this detail or a functionally equivalent alternative is best suited for the project. Use of a functionally equivalent detail does not violate Dryvit's warranty. This detail is subject to change without notice. Contact Dryvit Systems Canada to ensure you have the most recent version.

Notes:

1. These details are meant to apply to both Outsulation PD and Outsulation PD NC. Outsulation® PD NC requires the use of Primus® DM or Genesis™ DM as the base coat/adhesive.

2. Dryvit recommends that ground floor applications and all facades exposed to abnormal stress, high traffic, or deliberate impact have the base coat reinforced with Panzer® 15 or 20 Mesh prior to Standard Plus Mesh. Location of high impact zones should be indicated in contract drawings.

3. Expansion joint is required along top of foundation if 610mm (2'-0") dimension is exceeded.



R-006-01-18

FOUNDATION



129 Ringwood Drive
Stouffville, Ontario L4A 8C1
800-263-3308
www.dryvit.ca

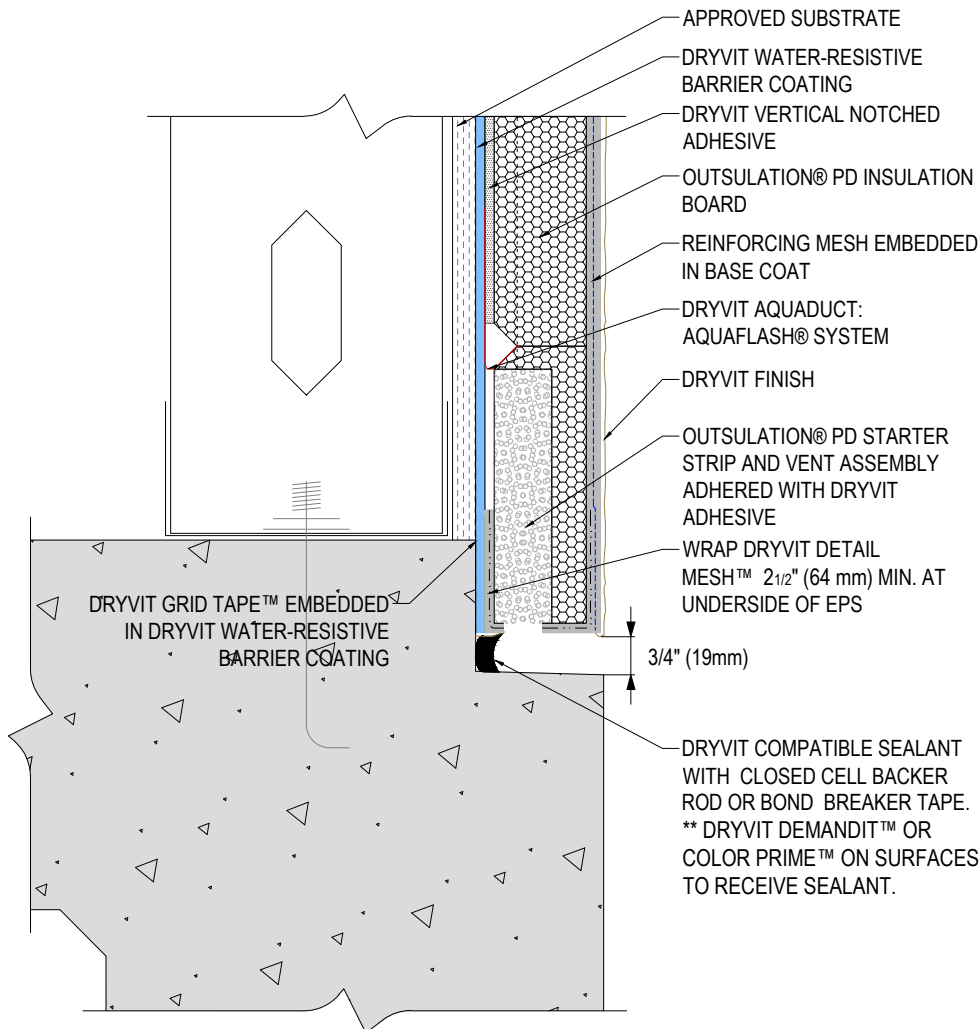
The architecture, engineering and design of the project using the Dryvit products is the responsibility of the project's design professional. All systems must comply with local building codes and standards. This detail is for general information and guidance only and Dryvit Systems Canada specifically disclaims any liability for the use of this detail and/or for the architecture, design, engineering or workmanship of any project. The design professional determines, at its sole discretion, whether this detail or a functionally equivalent alternative is best suited for the project. Use of a functionally equivalent detail does not violate Dryvit's warranty. This detail is subject to change without notice. Contact Dryvit Systems Canada to ensure you have the most recent version.

Notes:

1. These details are meant to apply to both Outsulation PD and Outsulation PD NC.

Outsulation® PD NC requires the use of Primus® DM or Genesis™ DM as the base coat/adhesive.

2. Dryvit recommends that ground floor applications and all facades exposed to abnormal stress, high traffic, or deliberate impact have the base coat reinforced with Panzer® 15 or 20 Mesh prior to Standard Plus Mesh. Location of high impact zones should be indicated in contract drawings.



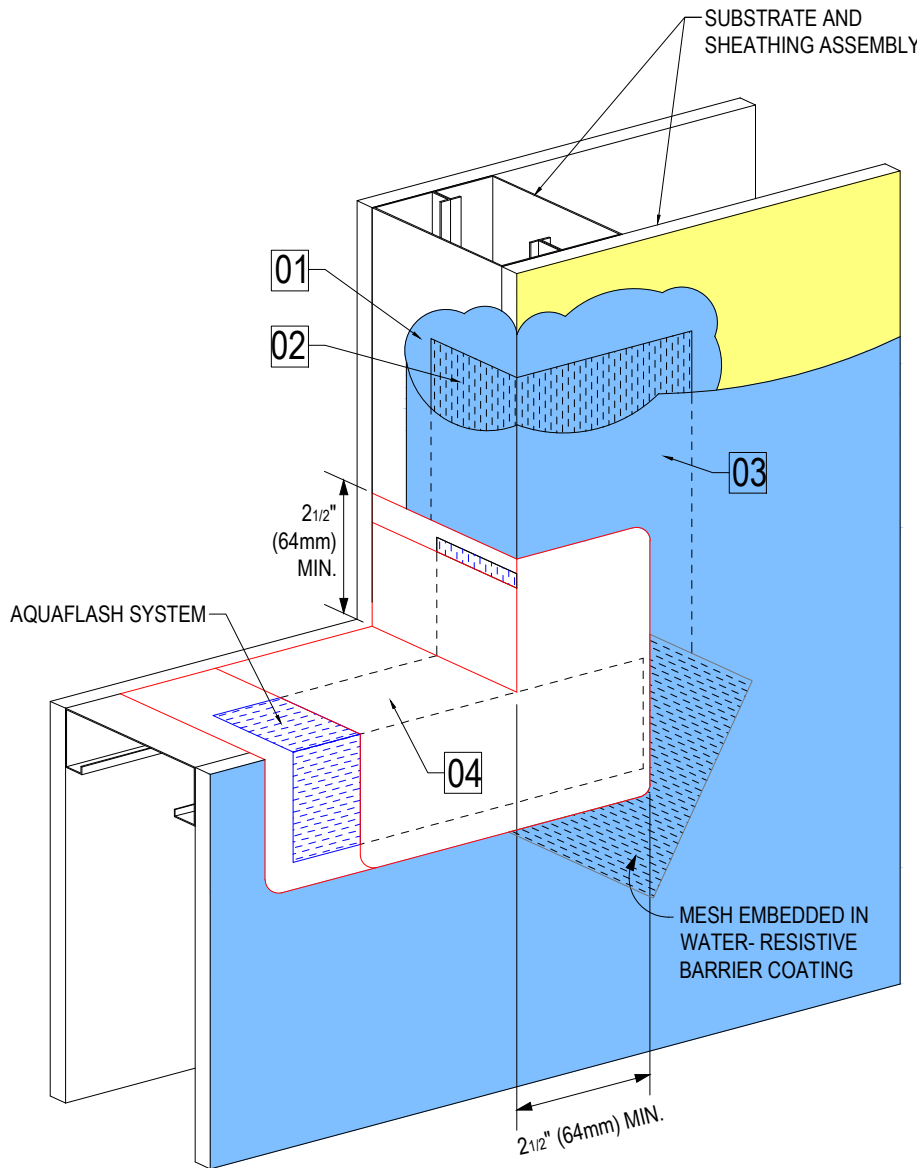
R-006-01-18

TERMINATION AT CONCRETE



129 Ringwood Drive
Stouffville, Ontario L4A 8C1
800-263-3308
www.dryvit.ca

The architecture, engineering and design of the project using the Dryvit products is the responsibility of the project's design professional. All systems must comply with local building codes and standards. This detail is for general information and guidance only and Dryvit Systems Canada specifically disclaims any liability for the use of this detail and/or for the architecture, design, engineering or workmanship of any project. The design professional determines, at its sole discretion, whether this detail or a functionally equivalent alternative is best suited for the project. Use of a functionally equivalent detail does not violate Dryvit's warranty. This detail is subject to change without notice. Contact Dryvit Systems Canada to ensure you have the most recent version.



Application Sequence and Notes:

1. Apply water-resistive barrier (WRB) over sheathing and into rough opening.
2. Embed Detail Mesh™ into WRB, stopping at sill. Embed diagonal mesh as shown at all corners.
3. Once embedment is complete, apply WRB over remainder of the substrate as illustrated.
4. Apply AquaFlash® and AquaFlash mesh as per DSC196 - Sills only if WRB is applied around the balance of the rough opening.

AquaFlash is applied using a brush or deep-nap roller. Embed AquaFlash Mesh into wet AquaFlash and allow to set. Apply second coat fully covering the AquaFlash Mesh.

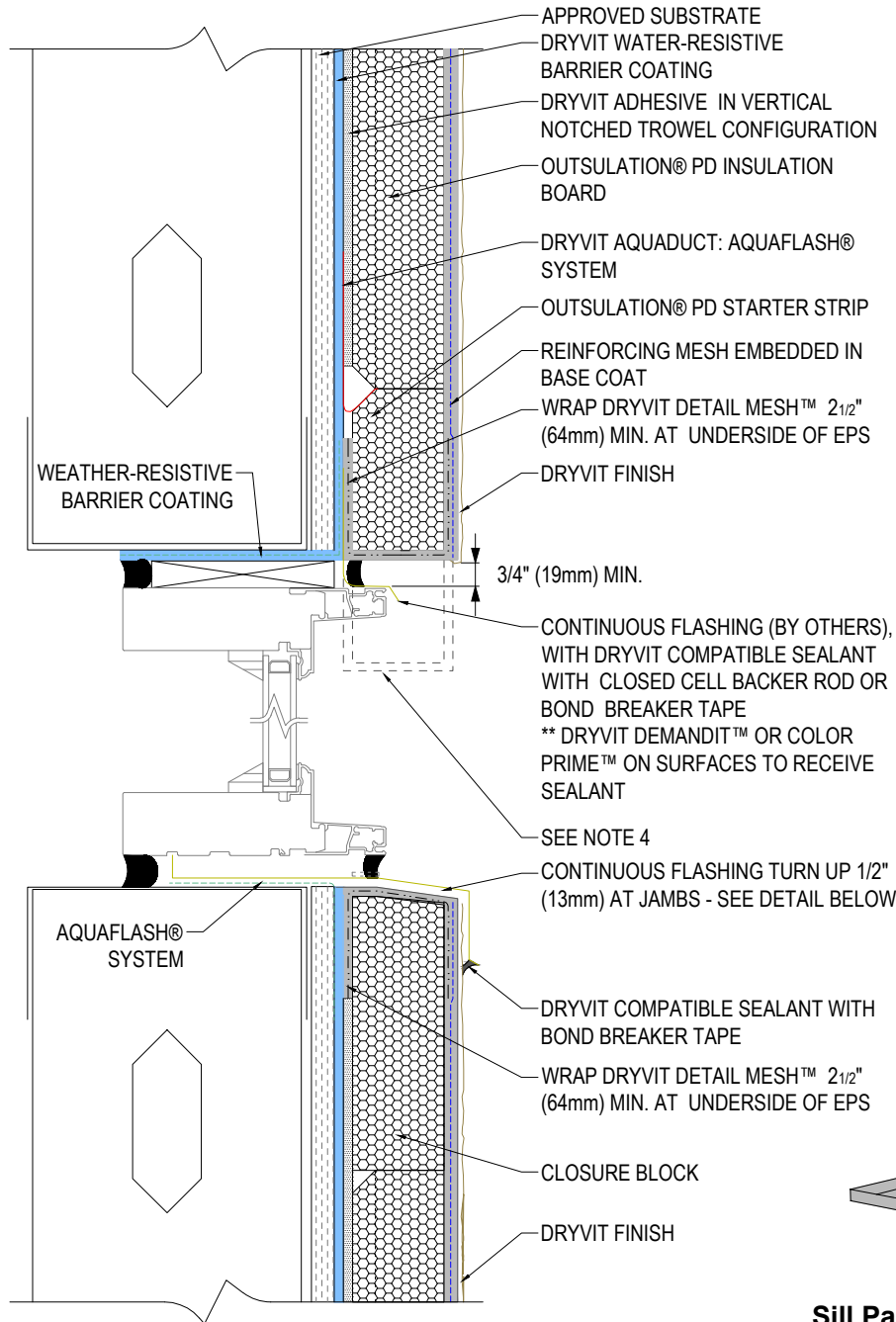
R-006-01-18

PROTECTION OF ROUGH OPENINGS



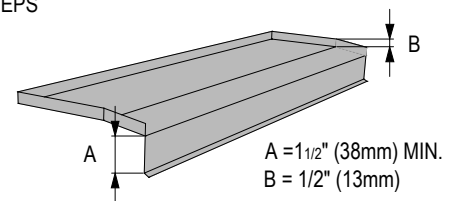
129 Ringwood Drive
Stouffville, Ontario L4A 8C1
800-263-3308
www.dryvit.ca

The architecture, engineering and design of the project using the Dryvit products is the responsibility of the project's design professional. All systems must comply with local building codes and standards. This detail is for general information and guidance only and Dryvit Systems Canada specifically disclaims any liability for the use of this detail and/or for the architecture, design, engineering or workmanship of any project. The design professional determines, at its sole discretion, whether this detail or a functionally equivalent alternative is best suited for the project. Use of a functionally equivalent detail does not violate Dryvit's warranty. This detail is subject to change without notice. Contact Dryvit Systems Canada to ensure you have the most recent version.



Notes:

1. These details are meant to apply to both Outsulation PD and Outsulation PD NC. Outsulation® PD NC requires the use of Primus® DM or Genesis™ DM as the base coat/adhesive.
2. Dryvit recommends that ground floor applications and all facades exposed to abnormal stress, high traffic, or deliberate impact have the base coat reinforced with Panzer® 15 or 20 Mesh prior to Standard Plus Mesh. Location of high impact zones should be indicated in contract drawings.
3. For continuous windows, use closure blocks to terminate system at sill.
4. AquaDuct above to be notched a minimum of 3" to accommodate picture framing.



Sill Pan Flashing Detail

R-006-01-18

HEAD/SILL - FOR WINDOW SPANS LESS THAN 10' (3.0 M)

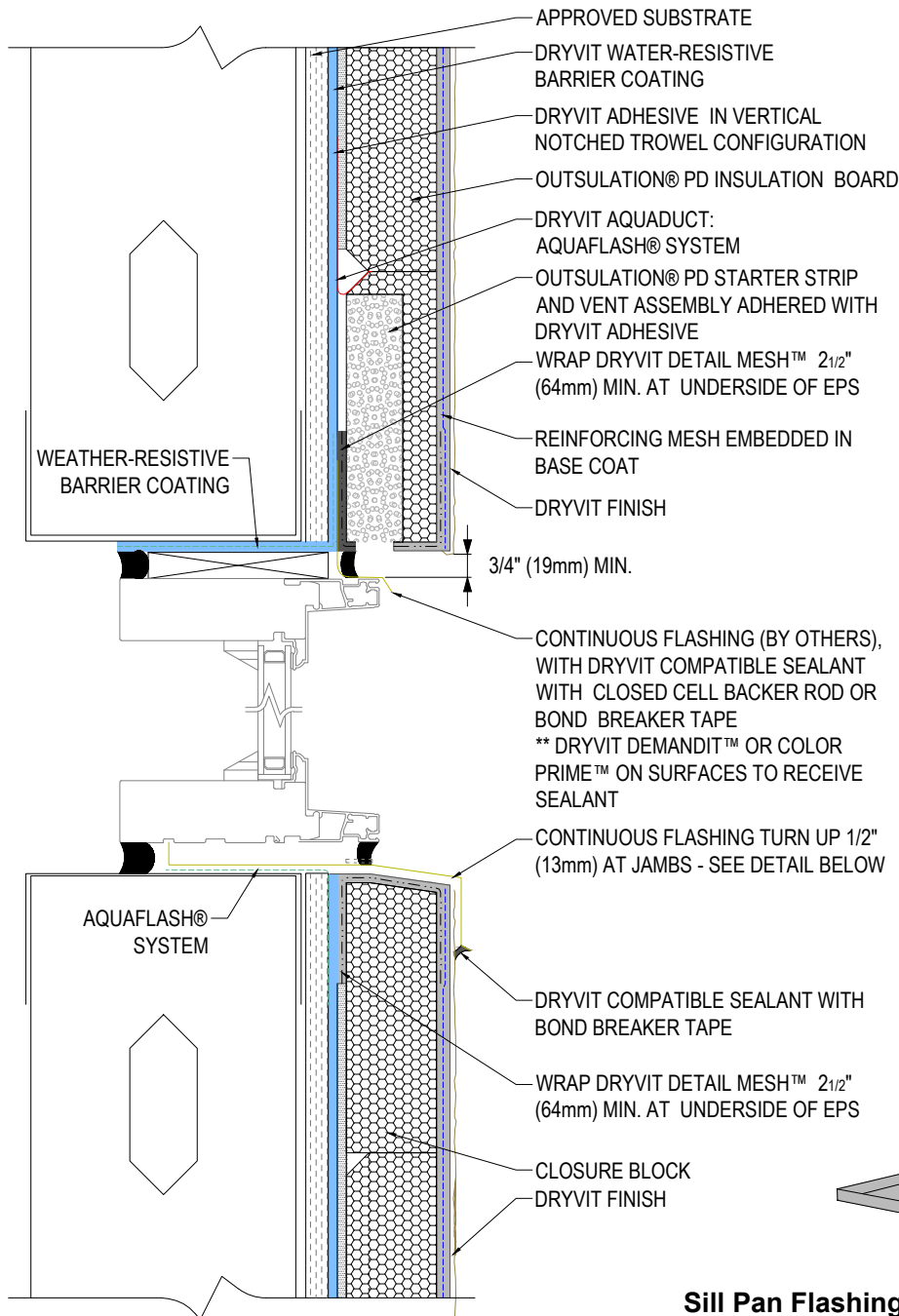


129 Ringwood Drive
 Stouffville, Ontario L4A 8C1
 800-263-3308
 www.dryvit.ca

The architecture, engineering and design of the project using the Dryvit products is the responsibility of the project's design professional. All systems must comply with local building codes and standards. This detail is for general information and guidance only and Dryvit Systems Canada specifically disclaims any liability for the use of this detail and/or for the architecture, design, engineering or workmanship of any project. The design professional determines, at its sole discretion, whether this detail or a functionally equivalent alternative is best suited for the project. Use of a functionally equivalent detail does not violate Dryvit's warranty. This detail is subject to change without notice. Contact Dryvit Systems Canada to ensure you have the most recent version.

Outsulation® PD (NC) System

OPD.07B

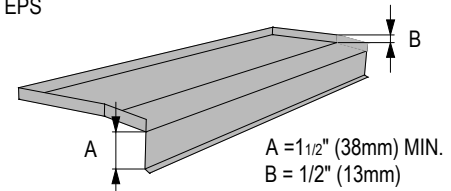


Notes:

1. These details are meant to apply to both Outsulation PD and Outsulation PD NC. Outsulation® PD NC requires the use of Primus® DM or Genesis™ DM as the base coat/adhesive.

2. Dryvit recommends that ground floor applications and all facades exposed to abnormal stress, high traffic, or deliberate impact have the base coat reinforced with Panzer® 15 or 20 Mesh prior to Standard Plus Mesh. Location of high impact zones should be indicated in contract drawings.

3. For continuous windows, use closure blocks to terminate system at sill.



Sill Pan Flashing Detail

R-006-01-18

HEAD/SILL - FOR WINDOW SPANS 10' OR GREATER



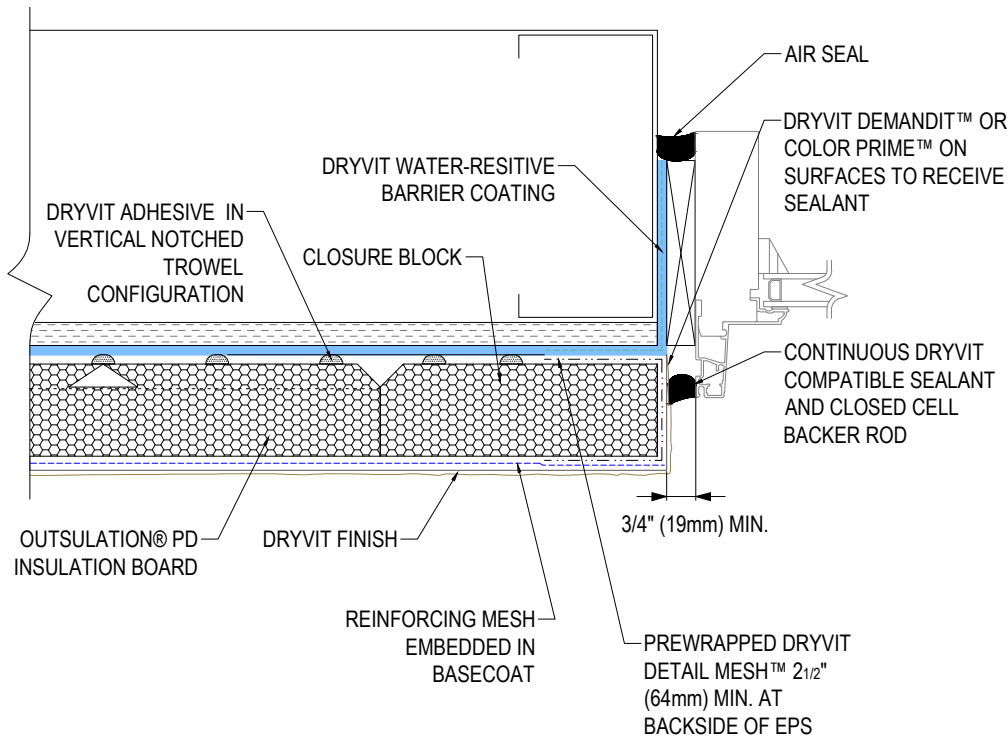
129 Ringwood Drive
Stouffville, Ontario L4A 8C1
800-263-3308
www.dryvit.ca

The architecture, engineering and design of the project using the Dryvit products is the responsibility of the project's design professional. All systems must comply with local building codes and standards. This detail is for general information and guidance only and Dryvit Systems Canada specifically disclaims any liability for the use of this detail and/or for the architecture, design, engineering or workmanship of any project. The design professional determines, at its sole discretion, whether this detail or a functionally equivalent alternative is best suited for the project. Use of a functionally equivalent detail does not violate Dryvit's warranty. This detail is subject to change without notice. Contact Dryvit Systems Canada to ensure you have the most recent version.

Notes:

1. These details are meant to apply to both Outsulation PD and Outsulation PD NC. Outsulation® PD NC requires the use of Primus® DM or Genesis™ DM as the base coat/adhesive.

2. Dryvit recommends that ground floor applications and all facades exposed to abnormal stress, high traffic, or deliberate impact have the base coat reinforced with Panzer® 15 or 20 Mesh prior to Standard Plus Mesh. Location of high impact zones should be indicated in contract drawings.



R-006-01-18

JAMB



129 Ringwood Drive
Stouffville, Ontario L4A 8C1
800-263-3308
www.dryvit.ca

The architecture, engineering and design of the project using the Dryvit products is the responsibility of the project's design professional. All systems must comply with local building codes and standards. This detail is for general information and guidance only and Dryvit Systems Canada specifically disclaims any liability for the use of this detail and/or for the architecture, design, engineering or workmanship of any project. The design professional determines, at its sole discretion, whether this detail or a functionally equivalent alternative is best suited for the project. Use of a functionally equivalent detail does not violate Dryvit's warranty. This detail is subject to change without notice. Contact Dryvit Systems Canada to ensure you have the most recent version.

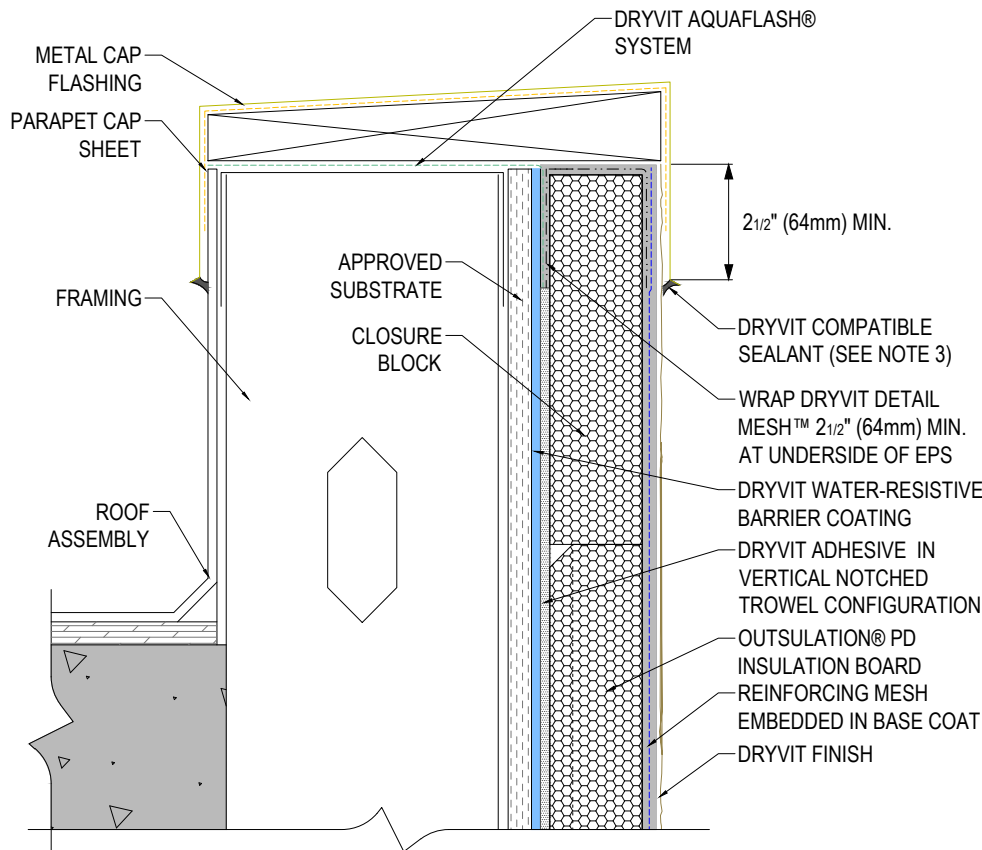
Notes:

1. These details are meant to apply to both Outsulation PD and Outsulation PD NC.

Outsulation® PD NC requires the use of Primus® DM or Genesis™ DM as the base coat/adhesive.

2. Dryvit recommends that ground floor applications and all facades exposed to abnormal stress, high traffic, or deliberate impact have the base coat reinforced with Panzer® 15 or 20 Mesh prior to Standard Plus Mesh. Location of high impact zones should be indicated in contract drawings.

3. Ensure that parapet capping is water tight if sealant is to be applied here. Otherwise extend capping overlap as required to avoid moisture migration behind system.



R-006-01-18

PARAPET - CAP FLASHING



129 Ringwood Drive
Stouffville, Ontario L4A 8C1
800-263-3308
www.dryvit.ca

The architecture, engineering and design of the project using the Dryvit products is the responsibility of the project's design professional. All systems must comply with local building codes and standards. This detail is for general information and guidance only and Dryvit Systems Canada specifically disclaims any liability for the use of this detail and/or for the architecture, design, engineering or workmanship of any project. The design professional determines, at its sole discretion, whether this detail or a functionally equivalent alternative is best suited for the project. Use of a functionally equivalent detail does not violate Dryvit's warranty. This detail is subject to change without notice. Contact Dryvit Systems Canada to ensure you have the most recent version.

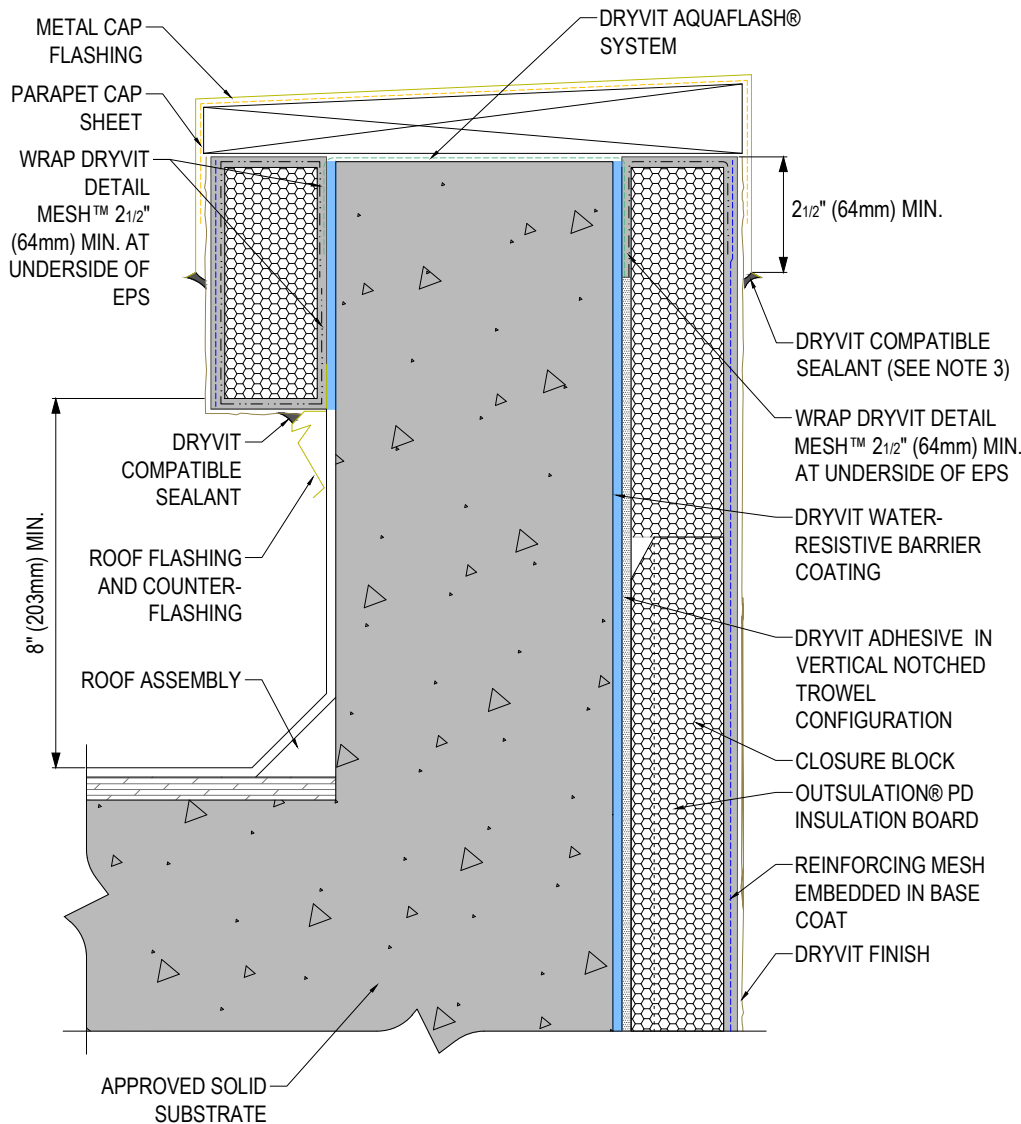
Notes:

1. These details are meant to apply to both Outsulation PD and Outsulation PD NC. Outsulation® PD NC requires the use of Primus® DM or Genesis™ DM as the base coat/adhesive.

2. Dryvit recommends that ground floor applications and all facades exposed to abnormal stress, high traffic, or deliberate impact have the base coat reinforced with Panzer® 15 or 20 Mesh prior to Standard Plus Mesh. Location of high impact zones should be indicated in contract drawings.

3. Ensure that parapet capping is water tight if sealant is to be applied here. Otherwise extend capping overlap as required to avoid moisture migration behind system.

4. If system on back of parapet extends for more than 2'-0" (610mm), provide for drainage similar to wall face.



R-006-01-18

PARAPET - SOLID SUBSTRATE, METAL COPING



129 Ringwood Drive
Stouffville, Ontario L4A 8C1
800-263-3308
www.dryvit.ca

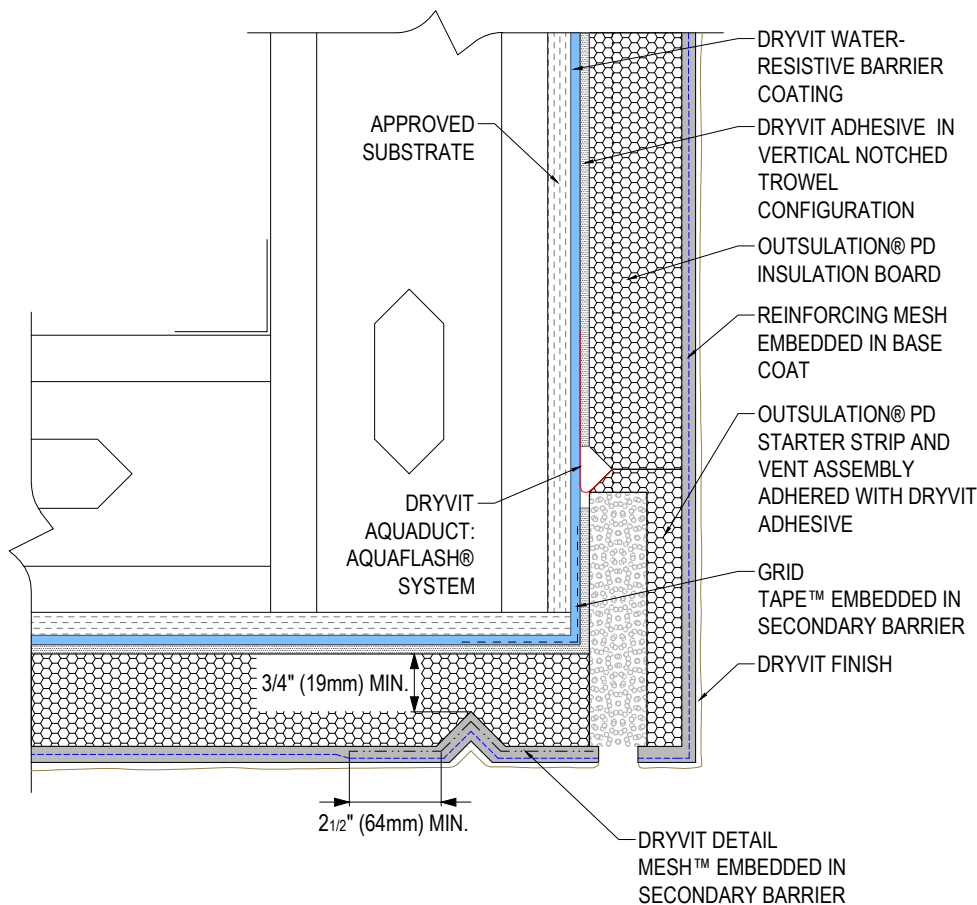
The architecture, engineering and design of the project using the Dryvit products is the responsibility of the project's design professional. All systems must comply with local building codes and standards. This detail is for general information and guidance only and Dryvit Systems Canada specifically disclaims any liability for the use of this detail and/or for the architecture, design, engineering or workmanship of any project. The design professional determines, at its sole discretion, whether this detail or a functionally equivalent alternative is best suited for the project. Use of a functionally equivalent detail does not violate Dryvit's warranty. This detail is subject to change without notice. Contact Dryvit Systems Canada to ensure you have the most recent version.

Notes:

1. These details are meant to apply to both Outsulation PD and Outsulation PD NC.

Outsulation® PD NC requires the use of Primus® DM or Genesis™ DM as the base coat/adhesive.

2. Dryvit recommends that ground floor applications and all facades exposed to abnormal stress, high traffic, or deliberate impact have the base coat reinforced with Panzer® 15 or 20 Mesh prior to Standard Plus Mesh. Location of high impact zones should be indicated in contract drawings.



R-006-01-18

SOFFIT/FASCIA INTERSECTION

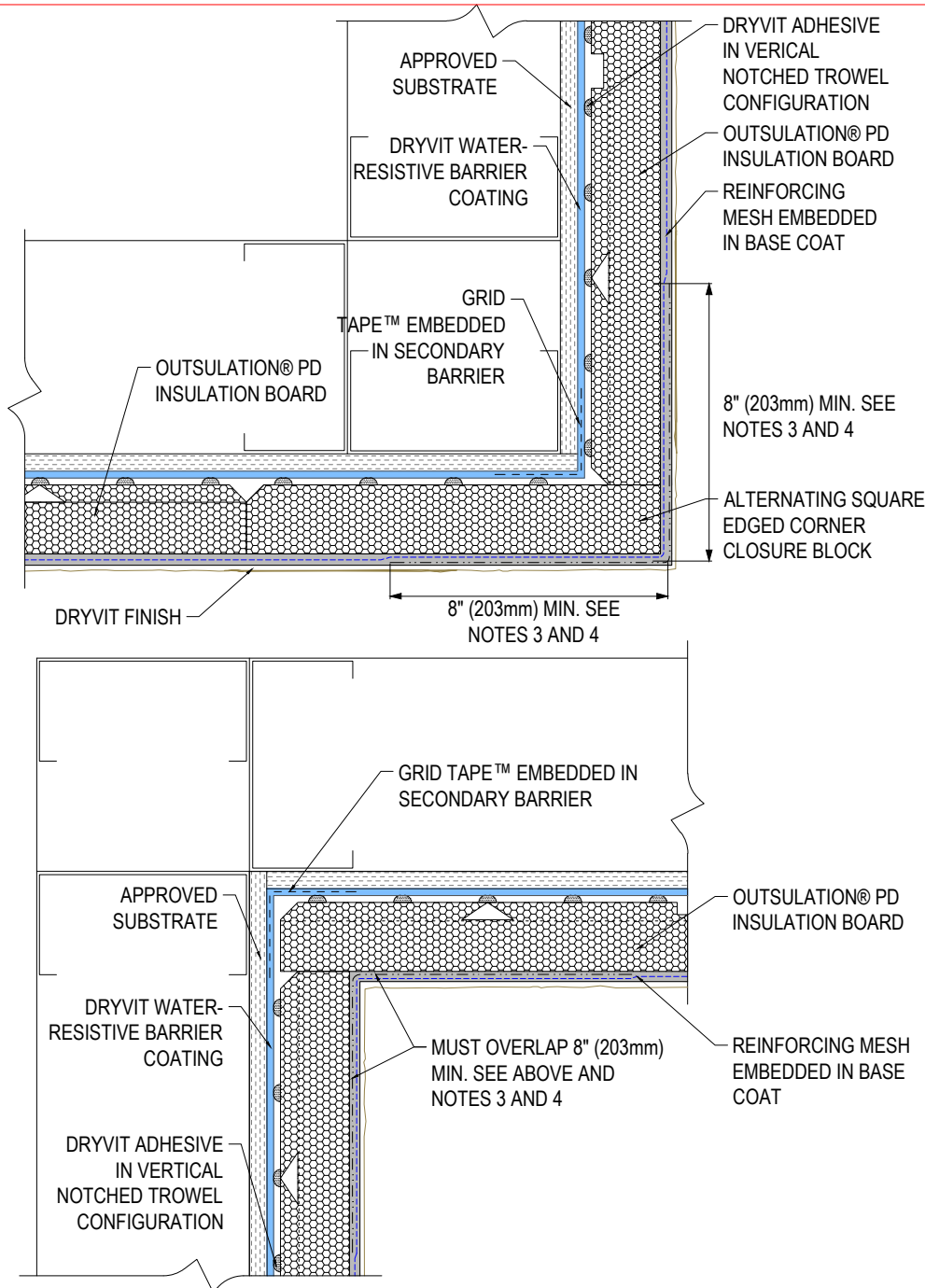


129 Ringwood Drive
Stouffville, Ontario L4A 8C1
800-263-3308
www.dryvit.ca

The architecture, engineering and design of the project using the Dryvit products is the responsibility of the project's design professional. All systems must comply with local building codes and standards. This detail is for general information and guidance only and Dryvit Systems Canada specifically disclaims any liability for the use of this detail and/or for the architecture, design, engineering or workmanship of any project. The design professional determines, at its sole discretion, whether this detail or a functionally equivalent alternative is best suited for the project. Use of a functionally equivalent detail does not violate Dryvit's warranty. This detail is subject to change without notice. Contact Dryvit Systems Canada to ensure you have the most recent version.

Outsulation® PD (NC) System

OPD.12



Notes:

1. These details are meant to apply to both Outsulation PD and Outsulation PD NC. Outsulation® PD NC requires the use of Primus® DM or Genesis™ DM as the base coat/adhesive.
2. Dryvit recommends that ground floor applications and all facades exposed to abnormal stress, high traffic, or deliberate impact have the base coat reinforced with Panzer® 15 or 20 Mesh prior to Standard Plus Mesh. Location of high impact zones should be indicated in contract drawings.
3. Double wrap outside corners with reinforcing mesh or use corner mesh.
4. Do not lap reinforcing mesh with 8" (203.2mm) of a corner.

R-006-01-18

INSIDE / OUTSIDE CORNERS



129 Ringwood Drive
Stouffville, Ontario L4A 8C1
800-263-3308
www.dryvit.ca

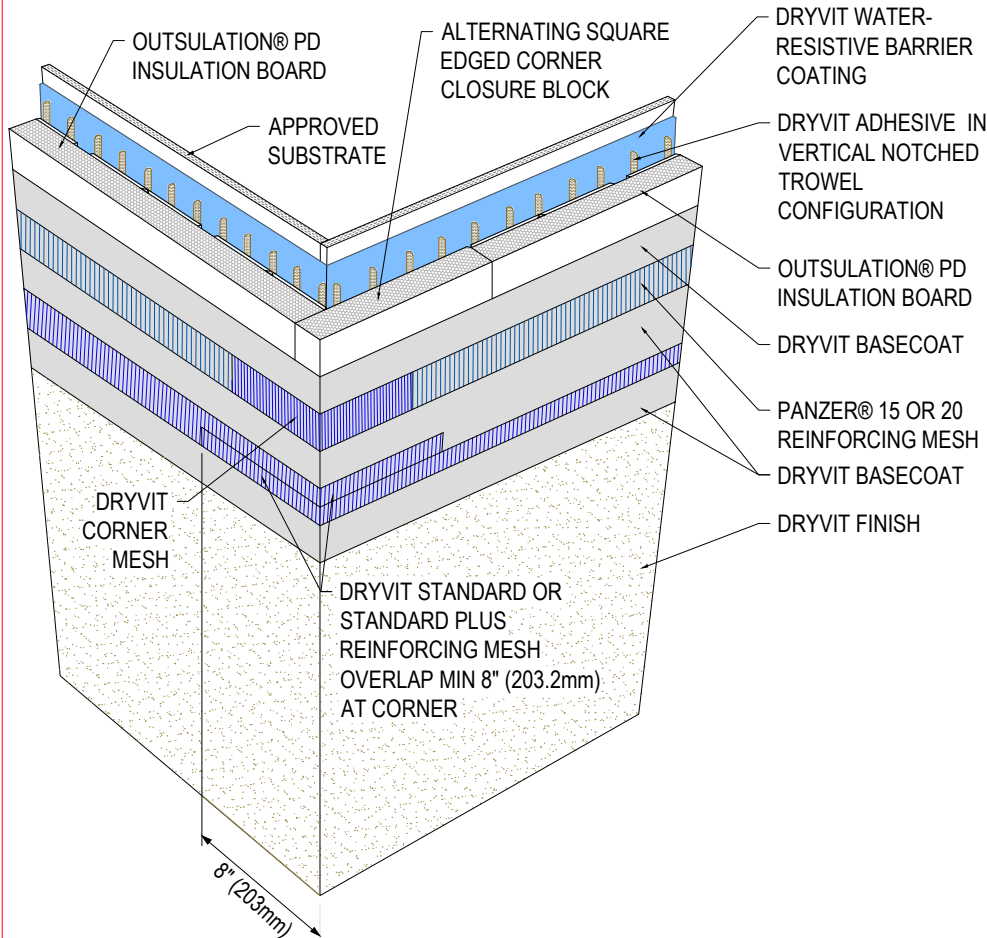
The architecture, engineering and design of the project using the Dryvit products is the responsibility of the project's design professional. All systems must comply with local building codes and standards. This detail is for general information and guidance only and Dryvit Systems Canada specifically disclaims any liability for the use of this detail and/or for the architecture, design, engineering or workmanship of any project. The design professional determines, at its sole discretion, whether this detail or a functionally equivalent alternative is best suited for the project. Use of a functionally equivalent detail does not violate Dryvit's warranty. This detail is subject to change without notice. Contact Dryvit Systems Canada to ensure you have the most recent version.

Notes:

1. These details are meant to apply to both Outsulation PD and Outsulation PD NC.

Outsulation® PD NC requires the use of Primus® DM or Genesis™ DM as the base coat/adhesive.

2. Dryvit recommends that ground floor applications and all facades exposed to abnormal stress, high traffic, or deliberate impact have the base coat reinforced with Panzer® 15 or 20 Mesh prior to Standard Plus Mesh. Location of high impact zones should be indicated in contract drawings.



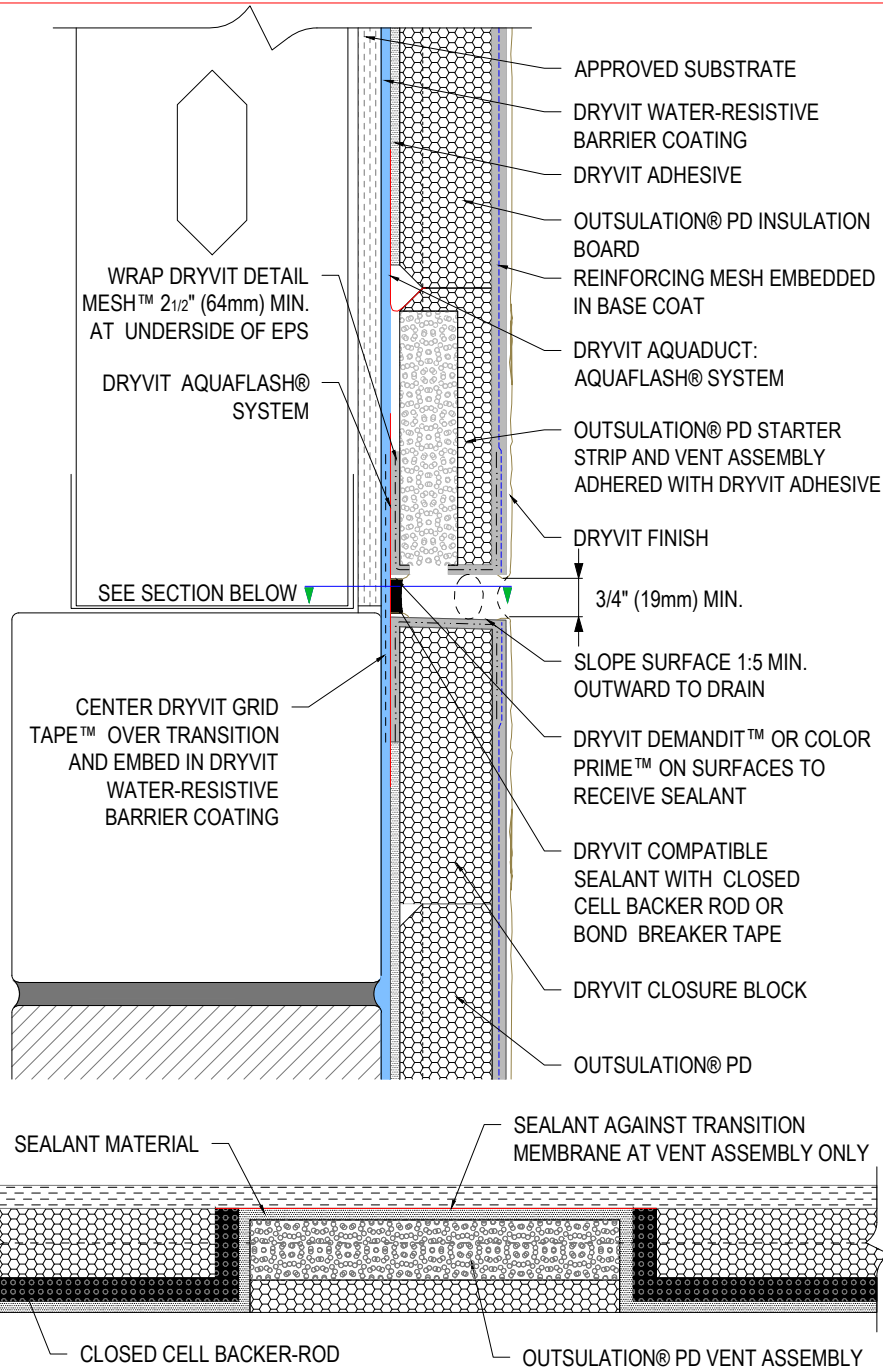
R-006-01-18

OUTSIDE CORNER - HIGH IMPACT



129 Ringwood Drive
Stouffville, Ontario L4A 8C1
800-263-3308
www.dryvit.ca

The architecture, engineering and design of the project using the Dryvit products is the responsibility of the project's design professional. All systems must comply with local building codes and standards. This detail is for general information and guidance only and Dryvit Systems Canada specifically disclaims any liability for the use of this detail and/or for the architecture, design, engineering or workmanship of any project. The design professional determines, at its sole discretion, whether this detail or a functionally equivalent alternative is best suited for the project. Use of a functionally equivalent detail does not violate Dryvit's warranty. This detail is subject to change without notice. Contact Dryvit Systems Canada to ensure you have the most recent version.



Notes:

1. These details are meant to apply to both Outsulation PD and Outsulation PD NC.

Outsulation® PD NC requires the use of Primus® DM or Genesis™ DM as the base coat/adhesive.

2. Dryvit recommends that ground floor applications and all facades exposed to abnormal stress, high traffic, or deliberate impact have the base coat reinforced with Panzer® 15 or 20 Mesh prior to Standard Plus Mesh. Location of high impact zones should be indicated in contract drawings.

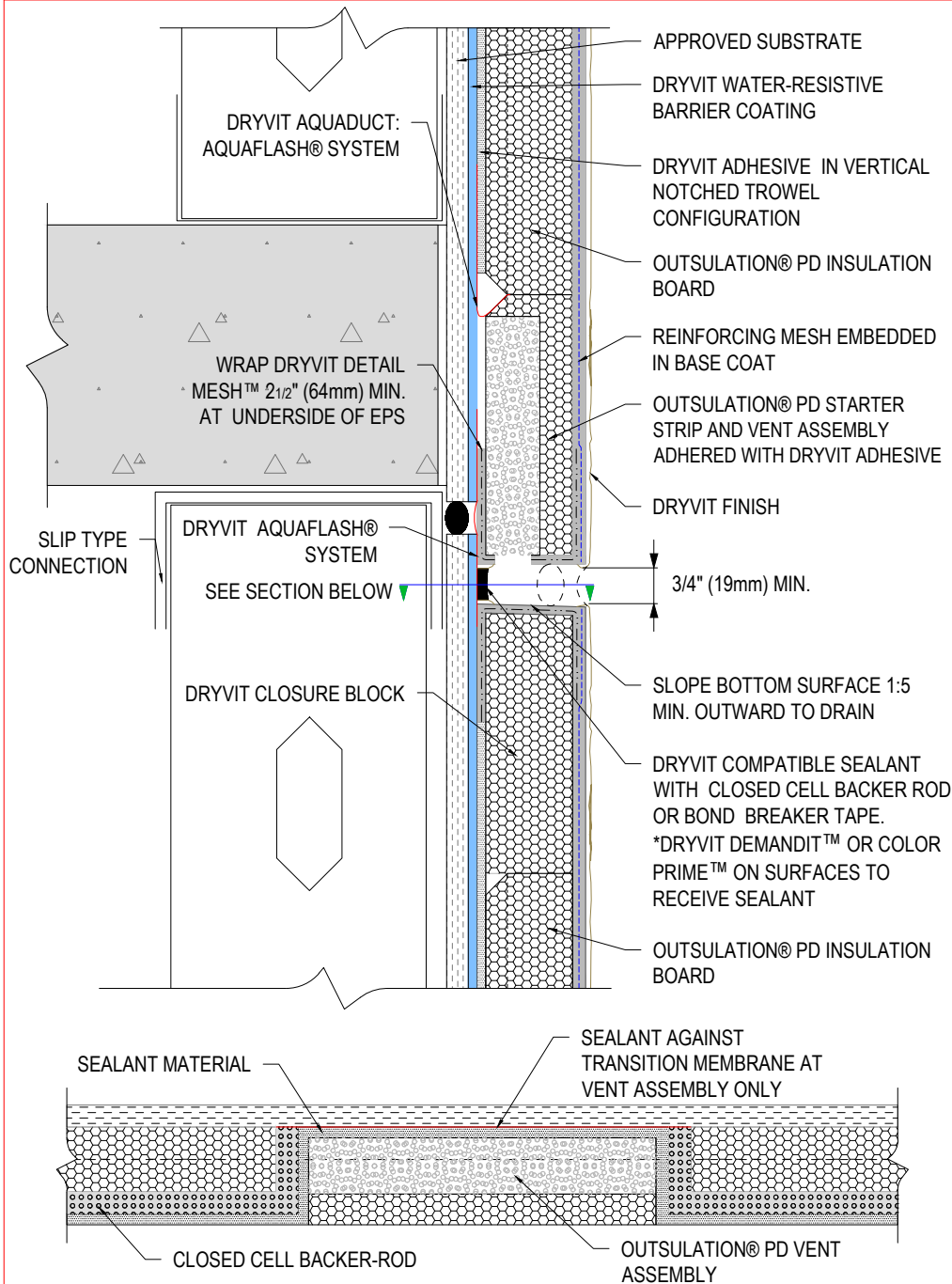
R-006-01-18

HORIZONTAL EXPANSION JOINT



129 Ringwood Drive
Stouffville, Ontario L4A 8C1
800-263-3308
www.dryvit.ca

The architecture, engineering and design of the project using the Dryvit products is the responsibility of the project's design professional. All systems must comply with local building codes and standards. This detail is for general information and guidance only and Dryvit Systems Canada specifically disclaims any liability for the use of this detail and/or for the architecture, design, engineering or workmanship of any project. The design professional determines, at its sole discretion, whether this detail or a functionally equivalent alternative is best suited for the project. Use of a functionally equivalent detail does not violate Dryvit's warranty. This detail is subject to change without notice. Contact Dryvit Systems Canada to ensure you have the most recent version.



Notes:

1. These details are meant to apply to both Outsulation PD and Outsulation PD NC. Outsulation® PD NC requires the use of Primus® DM or Genesis™ DM as the base coat/adhesive.
2. Dryvit recommends that ground floor applications and all facades exposed to abnormal stress, high traffic, or deliberate impact have the base coat reinforced with Panzer® 15 or 20 Mesh prior to Standard Plus Mesh. Location of high impact zones should be indicated in contract drawings.
3. Expansion joint in the Outsulation® PD System is necessary where significant differential movement is expected at floor lines.
4. Locate external sealant joint within 2" (50mm) of break in sheathing.

R-006-01-18

HORIZONTAL SPLIT JOINT



129 Ringwood Drive
Stouffville, Ontario L4A 8C1
800-263-3308
www.dryvit.ca

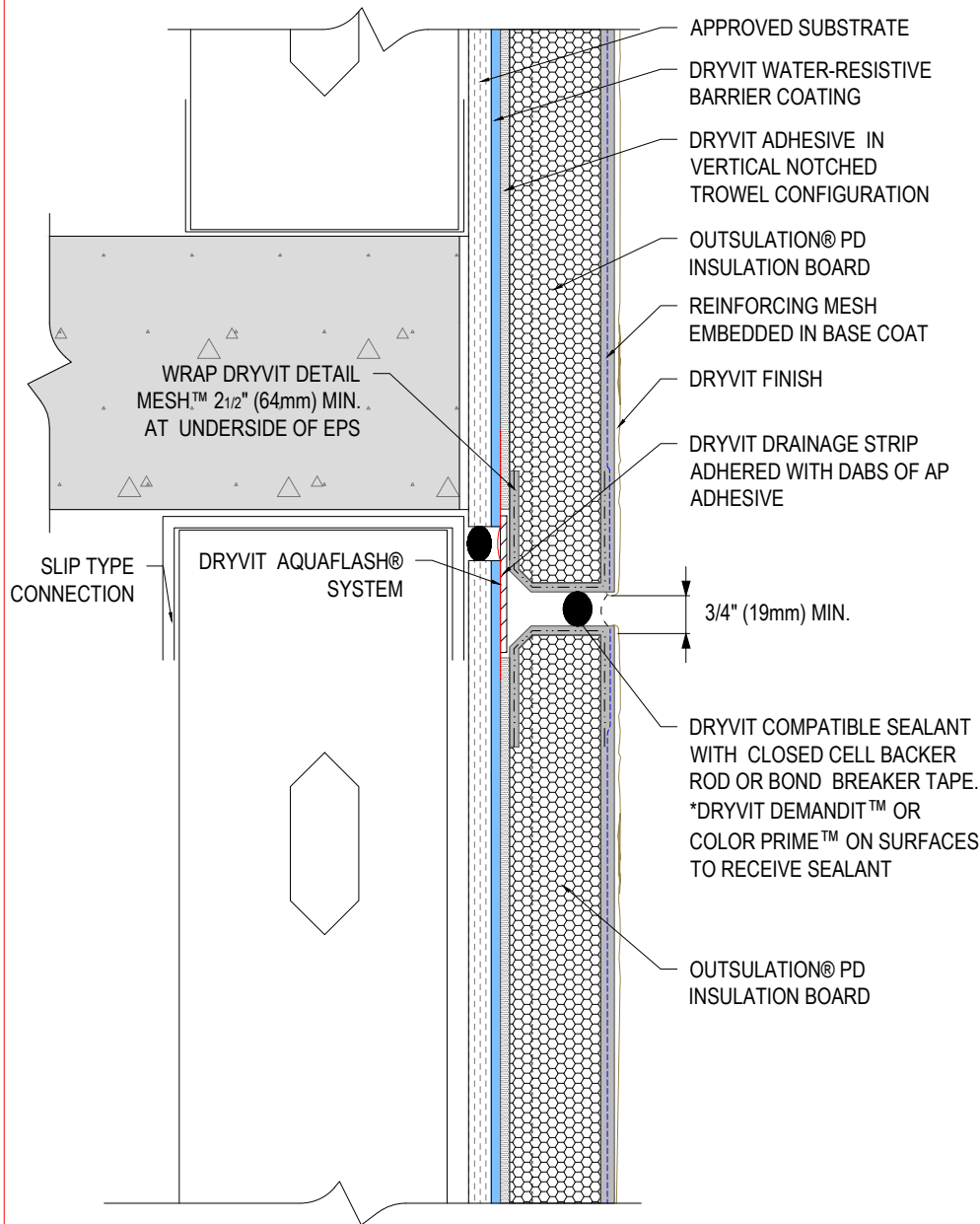
The architecture, engineering and design of the project using the Dryvit products is the responsibility of the project's design professional. All systems must comply with local building codes and standards. This detail is for general information and guidance only and Dryvit Systems Canada specifically disclaims any liability for the use of this detail and/or for the architecture, design, engineering or workmanship of any project. The design professional determines, at its sole discretion, whether this detail or a functionally equivalent alternative is best suited for the project. Use of a functionally equivalent detail does not violate Dryvit's warranty. This detail is subject to change without notice. Contact Dryvit Systems Canada to ensure you have the most recent version.

Notes:

1. These details are meant to apply to both Outsulation PD and Outsulation PD NC. Outsulation® PD NC requires the use of Primus® DM or Genesis™ DM as the base coat/adhesive.

2. Dryvit recommends that ground floor applications and all facades exposed to abnormal stress, high traffic, or deliberate impact have the base coat reinforced with Panzer® 15 or 20 Mesh prior to Standard Plus Mesh. Location of high impact zones should be indicated in contract drawings.

3. This joint configuration is to be used on every other floor line.



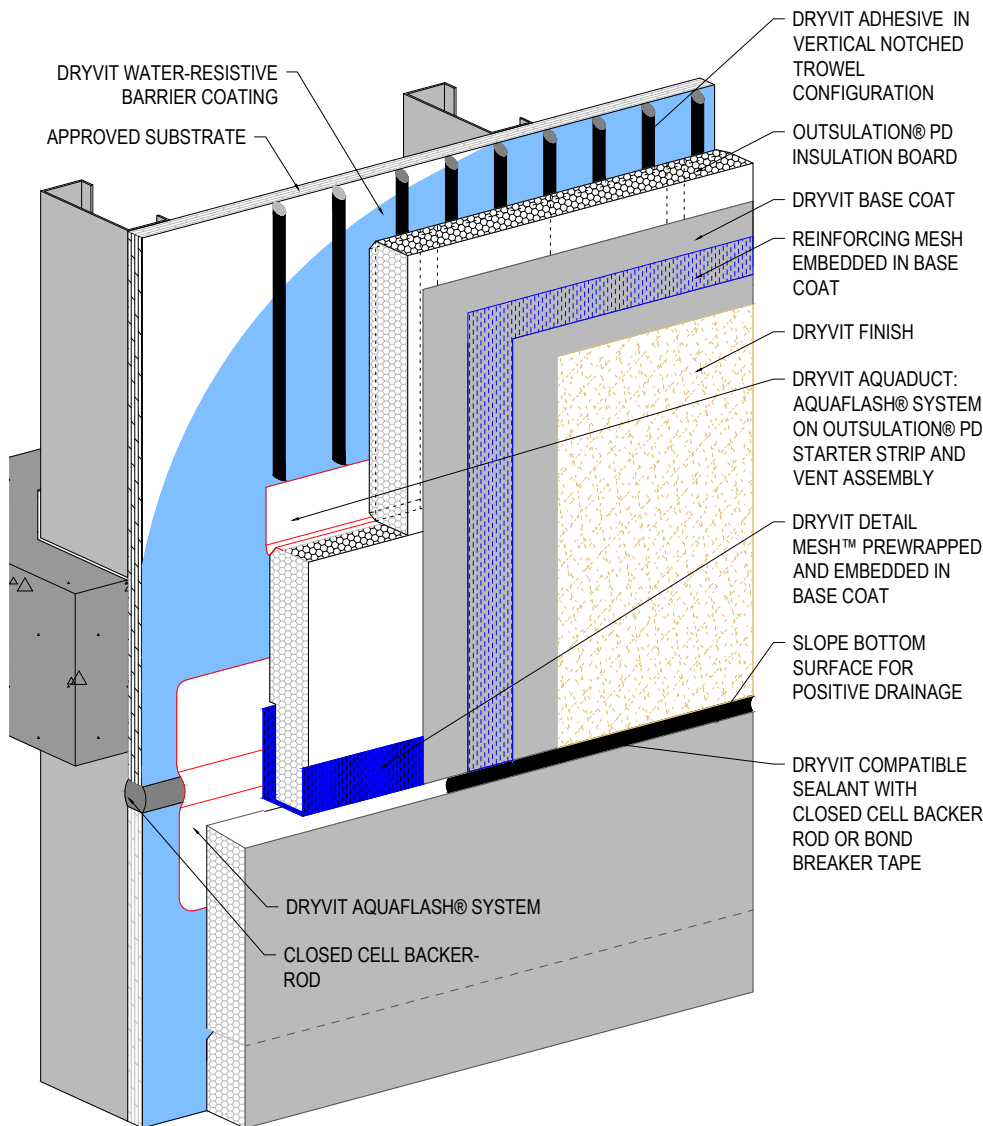
R-006-01-18

ALTERNATE FLOOR LINE JOINT



129 Ringwood Drive
Stouffville, Ontario L4A 8C1
800-263-3308
www.dryvit.ca

The architecture, engineering and design of the project using the Dryvit products is the responsibility of the project's design professional. All systems must comply with local building codes and standards. This detail is for general information and guidance only and Dryvit Systems Canada specifically disclaims any liability for the use of this detail and/or for the architecture, design, engineering or workmanship of any project. The design professional determines, at its sole discretion, whether this detail or a functionally equivalent alternative is best suited for the project. Use of a functionally equivalent detail does not violate Dryvit's warranty. This detail is subject to change without notice. Contact Dryvit Systems Canada to ensure you have the most recent version.



Notes:

1. These details are meant to apply to both Outsulation PD and Outsulation PD NC. Outsulation® PD NC requires the use of Primus® DM or Genesis™ DM as the base coat/adhesive.

2. Dryvit recommends that ground floor applications and all facades exposed to abnormal stress, high traffic, or deliberate impact have the base coat reinforced with Panzer® 15 or 20 Mesh prior to Standard Plus Mesh. Location of high impact zones should be indicated in contract drawings.

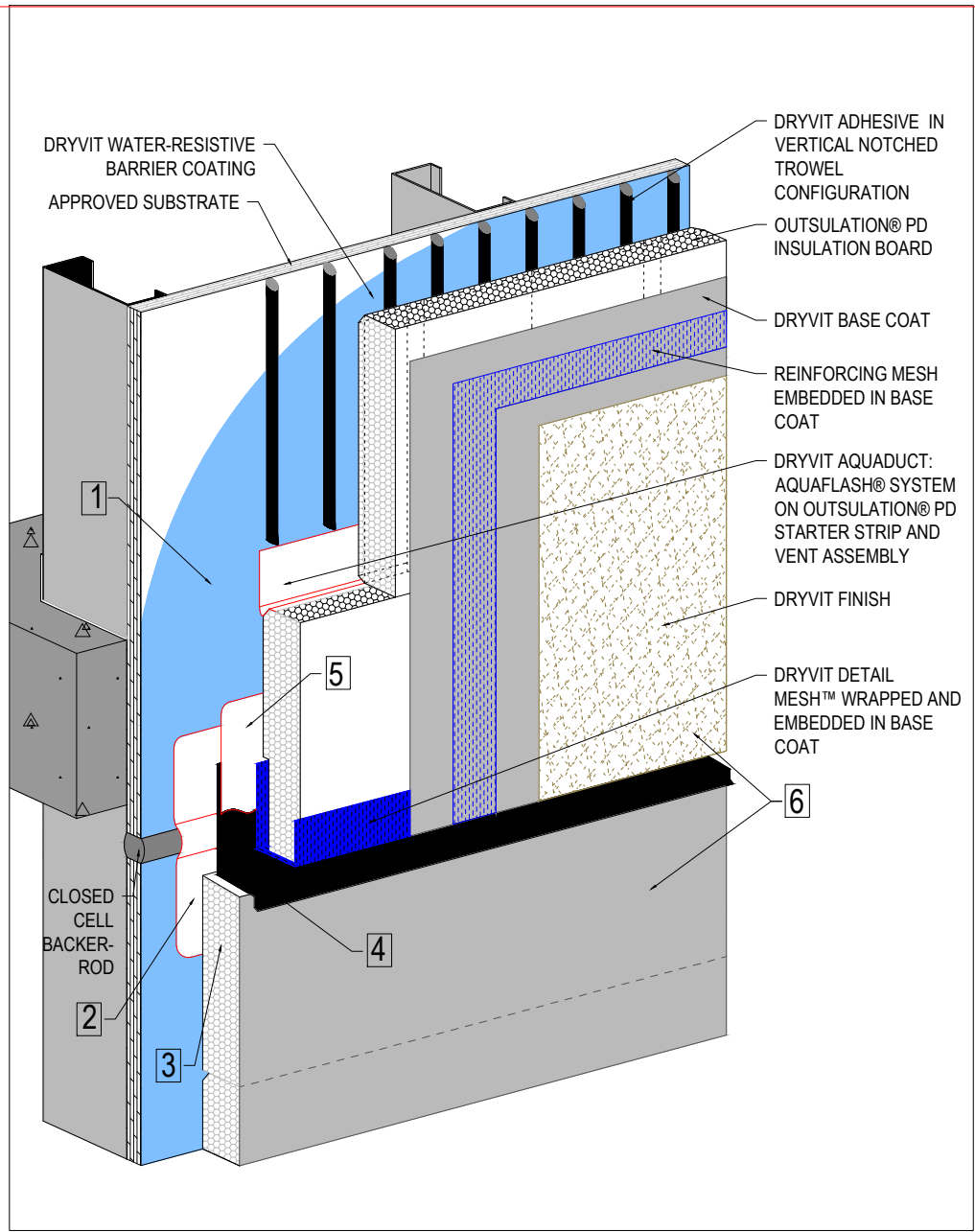
R-006-01-18

HORIZONTAL SPLIT JOINT - EXTENDED 2D VIEW



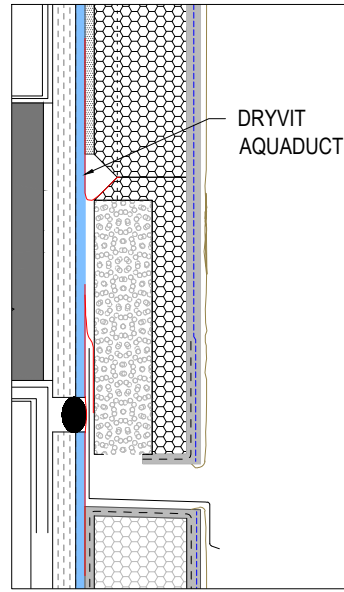
129 Ringwood Drive
Stouffville, Ontario L4A 8C1
800-263-3308
www.dryvit.ca

The architecture, engineering and design of the project using the Dryvit products is the responsibility of the project's design professional. All systems must comply with local building codes and standards. This detail is for general information and guidance only and Dryvit Systems Canada specifically disclaims any liability for the use of this detail and/or for the architecture, design, engineering or workmanship of any project. The design professional determines, at its sole discretion, whether this detail or a functionally equivalent alternative is best suited for the project. Use of a functionally equivalent detail does not violate Dryvit's warranty. This detail is subject to change without notice. Contact Dryvit Systems Canada to ensure you have the most recent version.



Application Sequence:

1. Apply coat of Dryvit water-resistive barrier (WRB) onto substrate.
2. Apply Dryvit AquaFlash® System over WRB coating at floorline joint.
3. Install the lower section of the Outsulation PD System inclusive of closure blocks, backwrapping and adhesive.
4. Install flashing over AquaFlash® System, resting onto lower section. Ensure that flashing is protected from any material spillage.
5. Apply a second layer of AquaFlash® System lapped over the flashing.
6. Install the remainder of the system as shown.



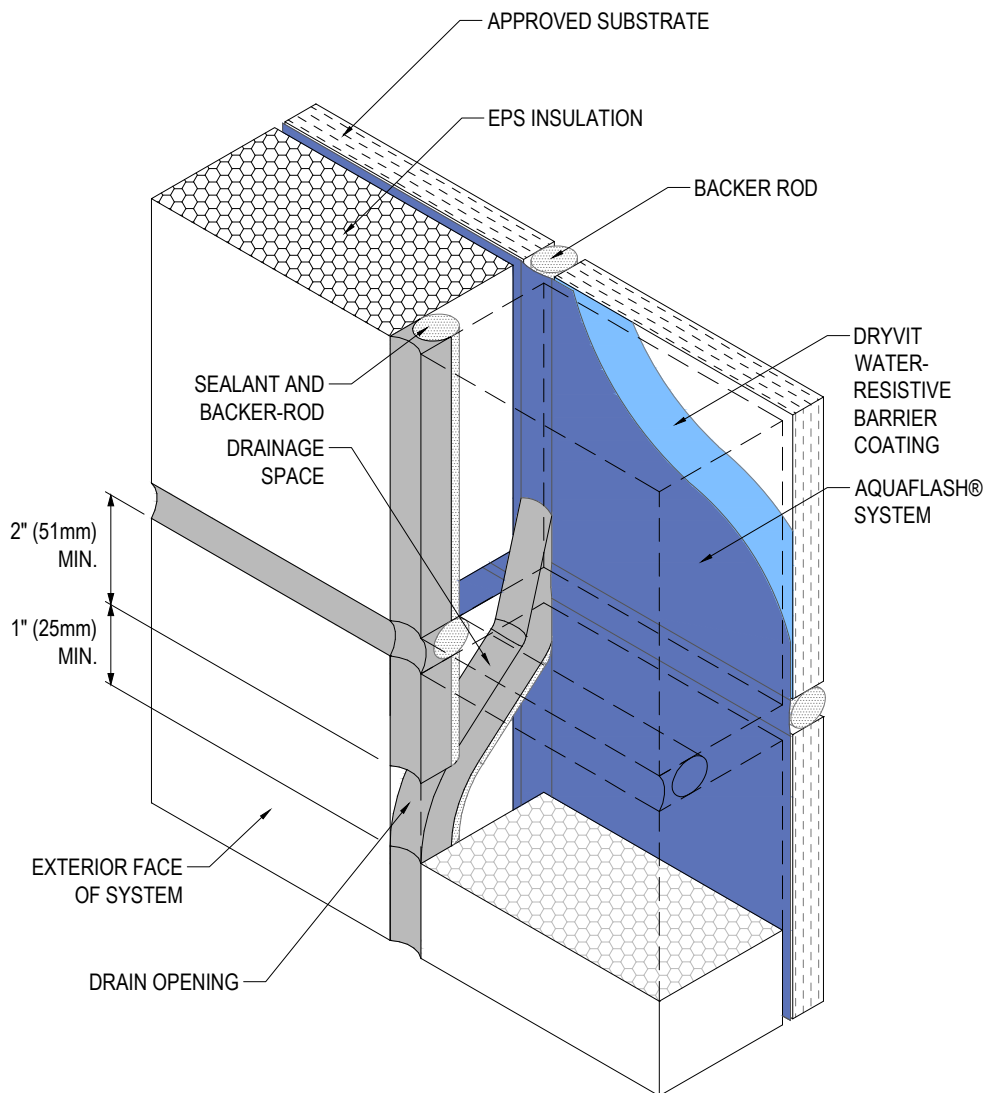
Section View

R-006-01-18

HORIZONTAL SPLIT JOINT - OPEN JOINT WITH FLASHING OPTION

dryvit
 129 Ringwood Drive
 Stouffville, Ontario L4A 8C1
 800-263-3308
 www.dryvit.ca

The architecture, engineering and design of the project using the Dryvit products is the responsibility of the project's design professional. All systems must comply with local building codes and standards. This detail is for general information and guidance only and Dryvit Systems Canada specifically disclaims any liability for the use of this detail and/or for the architecture, design, engineering or workmanship of any project. The design professional determines, at its sole discretion, whether this detail or a functionally equivalent alternative is best suited for the project. Use of a functionally equivalent detail does not violate Dryvit's warranty. This detail is subject to change without notice. Contact Dryvit Systems Canada to ensure you have the most recent version.



Notes:

1. These details are meant to apply to both Outsulation PD and Outsulation PD NC.

Outsulation® PD NC requires the use of Primus® DM or Genesis™ DM as the base coat/adhesive.

2. Dryvit recommends that ground floor applications and all facades exposed to abnormal stress, high traffic, or deliberate impact have the base coat reinforced with Panzer® 15 or 20 Mesh prior to Standard Plus Mesh. Location of high impact zones should be indicated in contract drawings.

R-006-01-18

TWO-STAGE JOINT



129 Ringwood Drive
Stouffville, Ontario L4A 8C1
800-263-3308
www.dryvit.ca

The architecture, engineering and design of the project using the Dryvit products is the responsibility of the project's design professional. All systems must comply with local building codes and standards. This detail is for general information and guidance only and Dryvit Systems Canada specifically disclaims any liability for the use of this detail and/or for the architecture, design, engineering or workmanship of any project. The design professional determines, at its sole discretion, whether this detail or a functionally equivalent alternative is best suited for the project. Use of a functionally equivalent detail does not violate Dryvit's warranty. This detail is subject to change without notice. Contact Dryvit Systems Canada to ensure you have the most recent version.

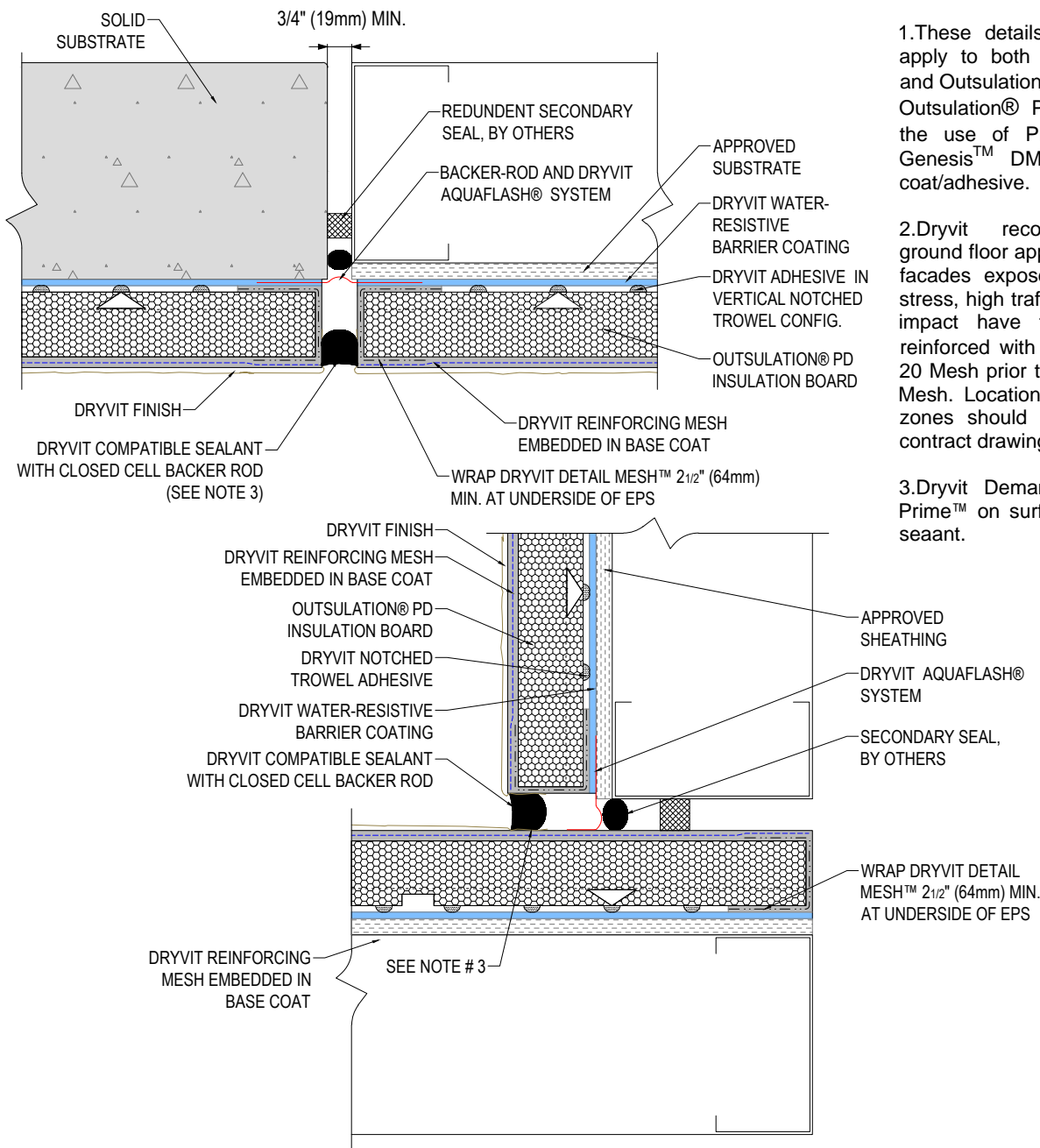
Notes:

1. These details are meant to apply to both Outsulation PD and Outsulation PD NC.

Outsulation® PD NC requires the use of Primus® DM or Genesis™ DM as the base coat/adhesive.

2. Dryvit recommends that ground floor applications and all facades exposed to abnormal stress, high traffic, or deliberate impact have the base coat reinforced with Panzer® 15 or 20 Mesh prior to Standard Plus Mesh. Location of high impact zones should be indicated in contract drawings.

3. Dryvit Demandit™ or Color Prime™ on surfaces to receive seant.



R-006-01-18

STRUCTURAL EXPANSION JOINTS



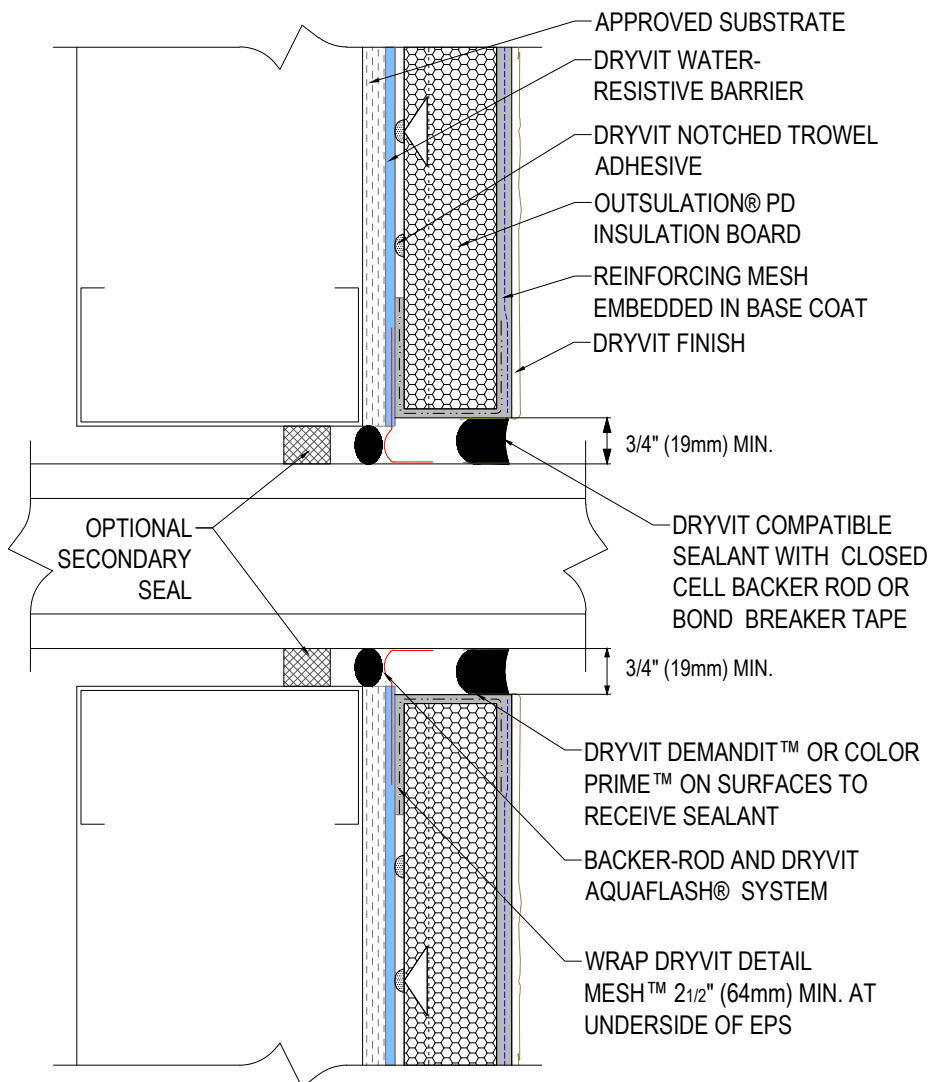
129 Ringwood Drive
Stouffville, Ontario L4A 8C1
800-263-3308
www.dryvit.ca

The architecture, engineering and design of the project using the Dryvit products is the responsibility of the project's design professional. All systems must comply with local building codes and standards. This detail is for general information and guidance only and Dryvit Systems Canada specifically disclaims any liability for the use of this detail and/or for the architecture, design, engineering or workmanship of any project. The design professional determines, at its sole discretion, whether this detail or a functionally equivalent alternative is best suited for the project. Use of a functionally equivalent detail does not violate Dryvit's warranty. This detail is subject to change without notice. Contact Dryvit Systems Canada to ensure you have the most recent version.

Notes:

1. These details are meant to apply to both Outsulation PD and Outsulation PD NC. Outsulation® PD NC requires the use of Primus® DM or Genesis™ DM as the base coat/adhesive.

2. Dryvit recommends that ground floor applications and all facades exposed to abnormal stress, high traffic, or deliberate impact have the base coat reinforced with Panzer® 15 or 20 Mesh prior to Standard Plus Mesh. Location of high impact zones should be indicated in contract drawings.



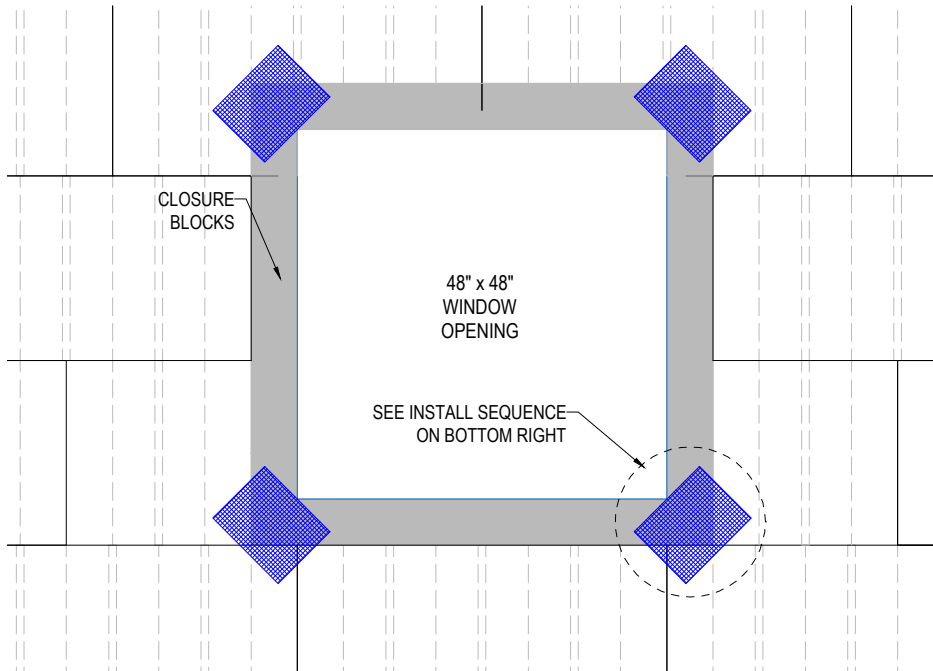
R-006-01-18

PENETRATIONS - CROSS SECTION



129 Ringwood Drive
Stouffville, Ontario L4A 8C1
800-263-3308
www.dryvit.ca

The architecture, engineering and design of the project using the Dryvit products is the responsibility of the project's design professional. All systems must comply with local building codes and standards. This detail is for general information and guidance only and Dryvit Systems Canada specifically disclaims any liability for the use of this detail and/or for the architecture, design, engineering or workmanship of any project. The design professional determines, at its sole discretion, whether this detail or a functionally equivalent alternative is best suited for the project. Use of a functionally equivalent detail does not violate Dryvit's warranty. This detail is subject to change without notice. Contact Dryvit Systems Canada to ensure you have the most recent version.

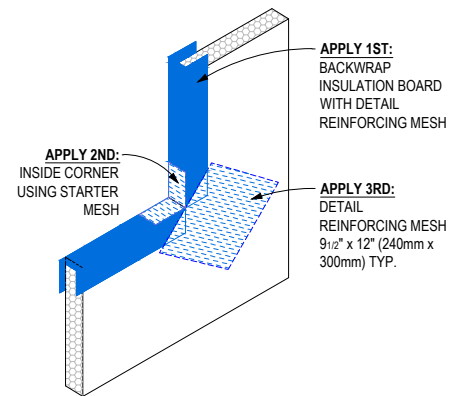
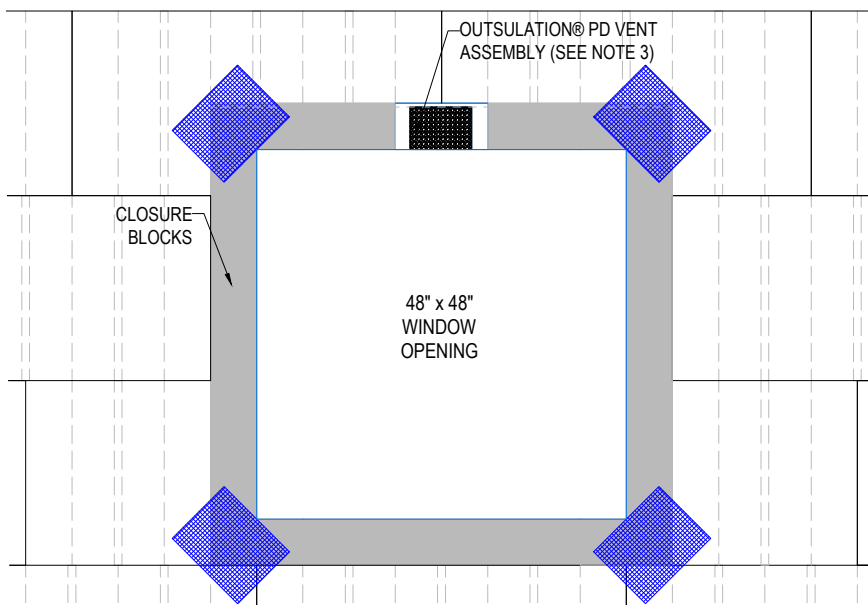


Notes:

1. These details are meant to apply to both Outsulation PD and Outsulation PD NC. Outsulation® PD NC requires the use of Primus® DM or Genesis™ DM as the base coat/adhesive.

2. Dryvit recommends that ground floor applications and all facades exposed to abnormal stress, high traffic, or deliberate impact have the base coat reinforced with Panzer® 15 or 20 Mesh prior to Standard Plus Mesh. Location of high impact zones should be indicated in contract drawings.

3. Top of Closure Block must be chamfered to accommodate the AquaDuct System.



Outsulation PD Vent Assembly Layout

Detail Mesh Installation Sequence

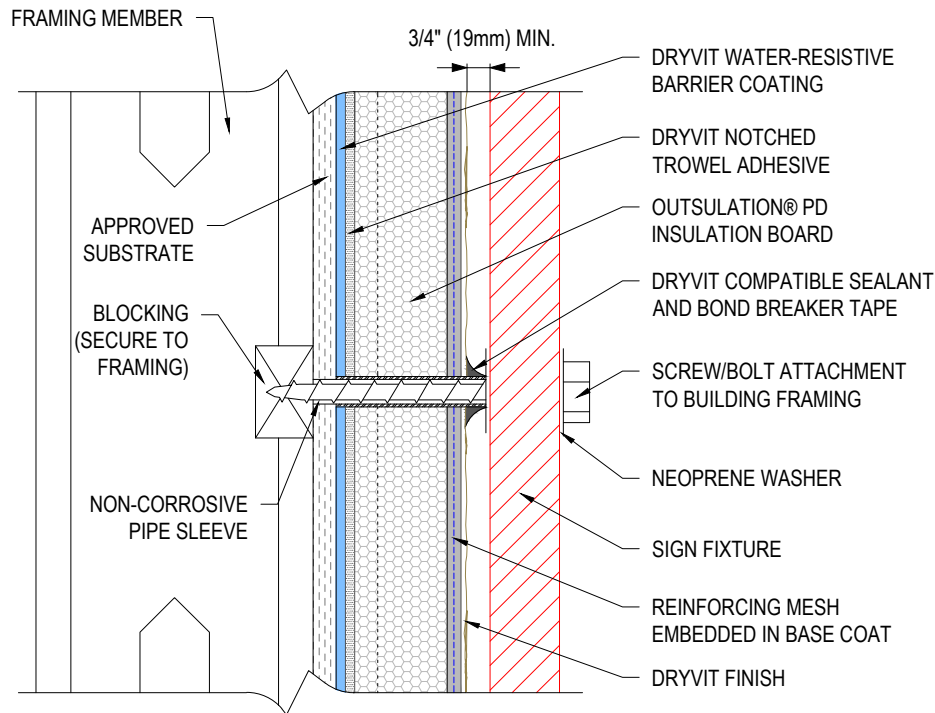
R-006-01-18

INSULATION LAYOUT - OPENINGS



129 Ringwood Drive
Stouffville, Ontario L4A 8C1
800-263-3308
www.dryvit.ca

The architecture, engineering and design of the project using the Dryvit products is the responsibility of the project's design professional. All systems must comply with local building codes and standards. This detail is for general information and guidance only and Dryvit Systems Canada specifically disclaims any liability for the use of this detail and/or for the architecture, design, engineering or workmanship of any project. The design professional determines, at its sole discretion, whether this detail or a functionally equivalent alternative is best suited for the project. Use of a functionally equivalent detail does not violate Dryvit's warranty. This detail is subject to change without notice. Contact Dryvit Systems Canada to ensure you have the most recent version.



Notes:

1. These details are meant to apply to both Outsulation PD and Outsulation PD NC.

Outsulation® PD NC requires the use of Primus® DM or Genesis™ DM as the base coat/adhesive.

2. Dryvit recommends that ground floor applications and all facades exposed to abnormal stress, high traffic, or deliberate impact have the base coat reinforced with Panzer® 15 or 20 Mesh prior to Standard Plus Mesh. Location of high impact zones should be indicated in contract drawings.

3. Entire perimeter of pipe sleeve is caulked to prevent water entry into wall.

Installation Instructions:

1. Pre-drill through EIFS stopping at water-resistive barrier (WRB).

2. Cut sleeve to equal depth of system from WRB to outside face.

3. Gun neutral cure silicone sealant into hole and insert sleeve.

4. While sealant is wet, install fastener and tool sealant around edges as shown.

R-006-01-18

SIGN ATTACHMENT

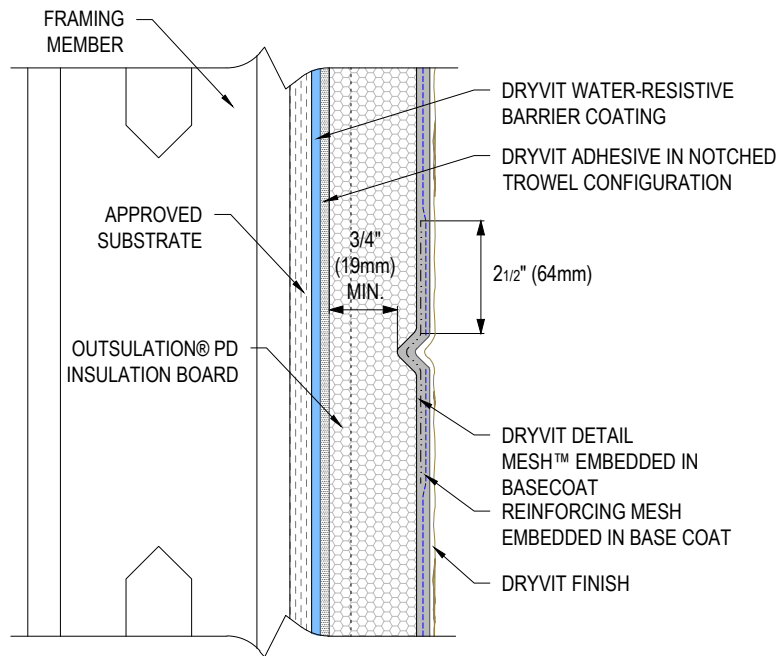


129 Ringwood Drive
Stouffville, Ontario L4A 8C1
800-263-3308
www.dryvit.ca

The architecture, engineering and design of the project using the Dryvit products is the responsibility of the project's design professional. All systems must comply with local building codes and standards. This detail is for general information and guidance only and Dryvit Systems Canada specifically disclaims any liability for the use of this detail and/or for the architecture, design, engineering or workmanship of any project. The design professional determines, at its sole discretion, whether this detail or a functionally equivalent alternative is best suited for the project. Use of a functionally equivalent detail does not violate Dryvit's warranty. This detail is subject to change without notice. Contact Dryvit Systems Canada to ensure you have the most recent version.

Outsulation® PD (NC) System

OPD.23



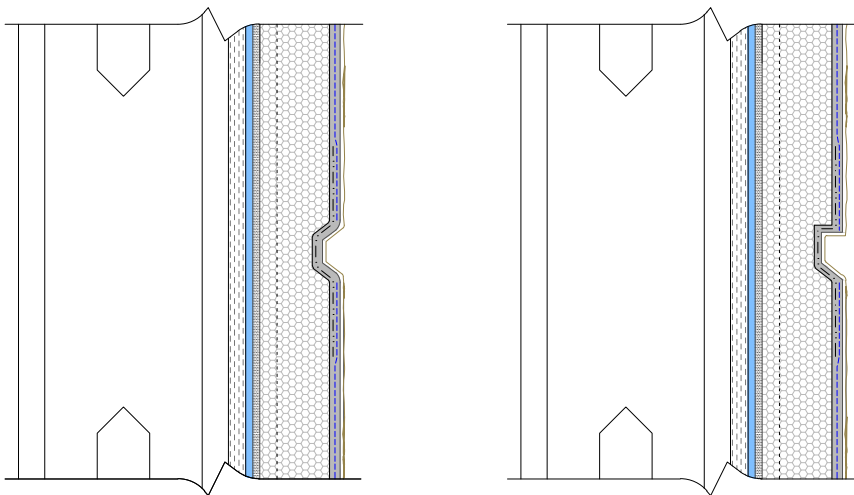
Notes:

1. These details are meant to apply to both Outsulation PD and Outsulation PD NC.

Outsulation® PD NC requires the use of Primus® DM or Genesis™ DM as the base coat/adhesive.

2. Dryvit recommends that ground floor applications and all facades exposed to abnormal stress, high traffic, or deliberate impact have the base coat reinforced with Panzer® 15 or 20 Mesh prior to Standard Plus Mesh. Location of high impact zones should be indicated in contract drawings.

3. Bottom ends of reveals are to be sloped for positive drainage.



R-006-01-18

AESTHETIC REVEALS

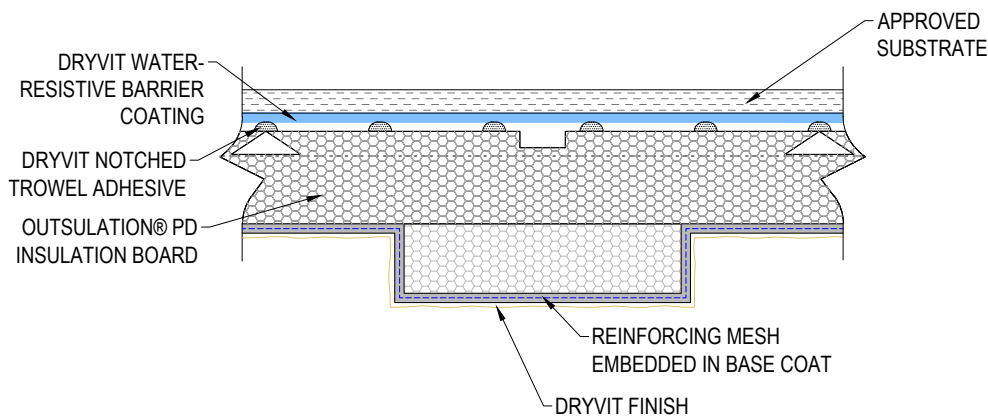
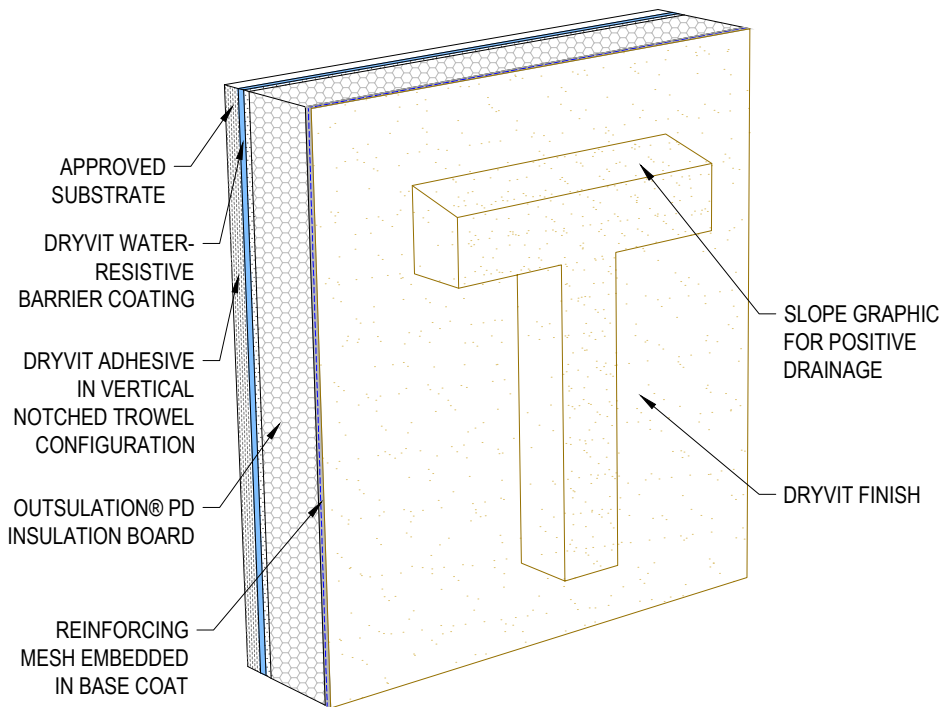


129 Ringwood Drive
Stouffville, Ontario L4A 8C1
800-263-3308
www.dryvit.ca

The architecture, engineering and design of the project using the Dryvit products is the responsibility of the project's design professional. All systems must comply with local building codes and standards. This detail is for general information and guidance only and Dryvit Systems Canada specifically disclaims any liability for the use of this detail and/or for the architecture, design, engineering or workmanship of any project. The design professional determines, at its sole discretion, whether this detail or a functionally equivalent alternative is best suited for the project. Use of a functionally equivalent detail does not violate Dryvit's warranty. This detail is subject to change without notice. Contact Dryvit Systems Canada to ensure you have the most recent version.

Notes:

1. These details are meant to apply to both Outsulation PD and Outsulation PD NC. Outsulation® PD NC requires the use of Primus® DM or Genesis™ DM as the base coat/adhesive.
2. Dryvit recommends that ground floor applications and all facades exposed to abnormal stress, high traffic, or deliberate impact have the base coat reinforced with Panzer® 15 or 20 Mesh prior to Standard Plus Mesh. Location of high impact zones should be indicated in contract drawings.
3. Bottom ends of reveals are to be sloped for positive drainage.



R-006-01-18

PROJECTING GRAPHICS

Projecting Graphics

The architecture, engineering and design of the project using the Dryvit products is the responsibility of the project's design professional. All systems must comply with local building codes and standards. This detail is for general information and guidance only and Dryvit Systems Canada specifically disclaims any liability for the use of this detail and/or for the architecture, design, engineering or workmanship of any project. The design professional determines, at its sole discretion, whether this detail or a functionally equivalent alternative is best suited for the project. Use of a functionally equivalent detail does not violate Dryvit's warranty. This detail is subject to change without notice. Contact Dryvit Systems Canada to ensure you have the most recent version.



129 Ringwood Drive
Stouffville, Ontario L4A 8C1
800-263-3308
www.dryvit.ca

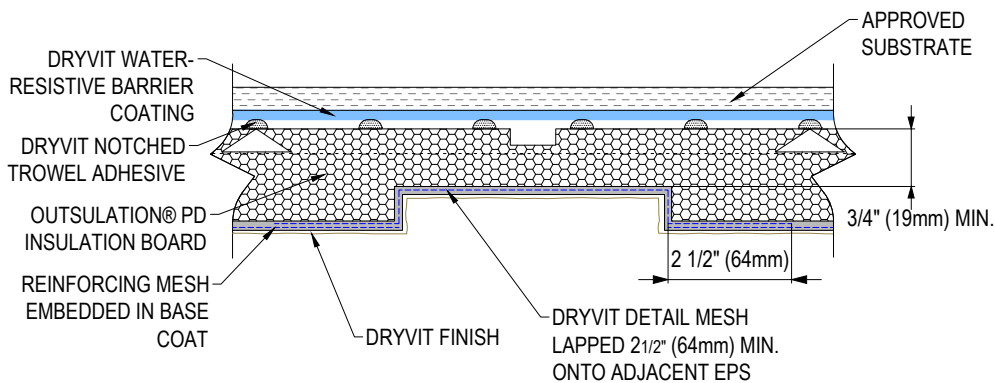
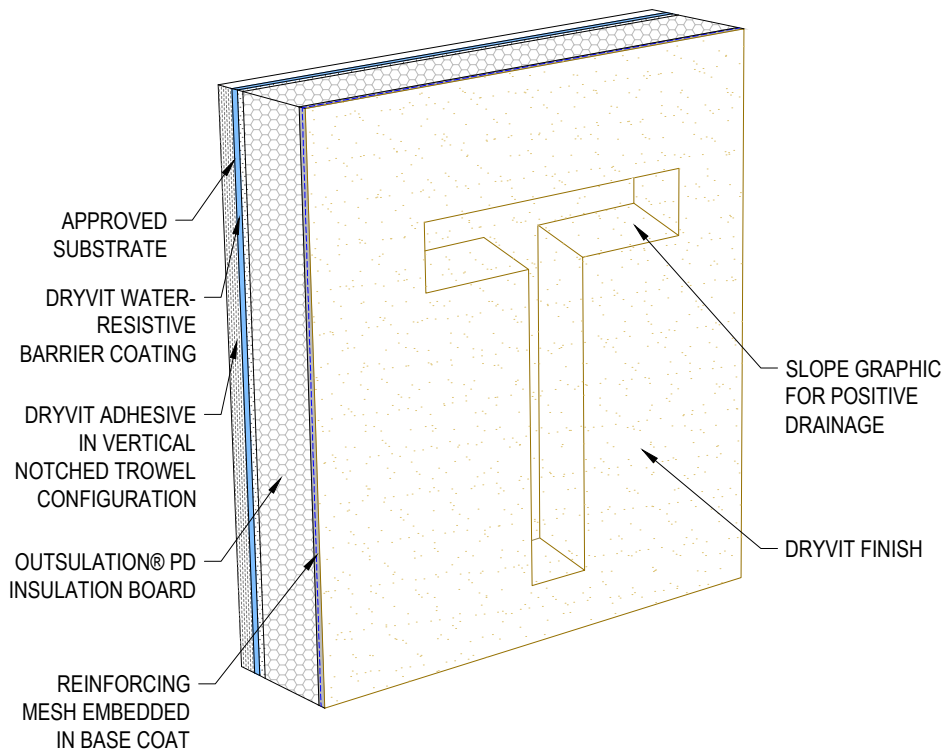
Notes:

1. These details are meant to apply to both Outsulation PD and Outsulation PD NC.

Outsulation® PD NC requires the use of Primus® DM or Genesis™ DM as the base coat/adhesive.

2. Dryvit recommends that ground floor applications and all facades exposed to abnormal stress, high traffic, or deliberate impact have the base coat reinforced with Panzer® 15 or 20 Mesh prior to Standard Plus Mesh. Location of high impact zones should be indicated in contract drawings.

3. Bottom ends of reveals are to be sloped for positive drainage.



R-006-01-18

RECESSED GRAPHICS



129 Ringwood Drive
Stouffville, Ontario L4A 8C1
800-263-3308
www.dryvit.ca

The architecture, engineering and design of the project using the Dryvit products is the responsibility of the project's design professional. All systems must comply with local building codes and standards. This detail is for general information and guidance only and Dryvit Systems Canada specifically disclaims any liability for the use of this detail and/or for the architecture, design, engineering or workmanship of any project. The design professional determines, at its sole discretion, whether this detail or a functionally equivalent alternative is best suited for the project. Use of a functionally equivalent detail does not violate Dryvit's warranty. This detail is subject to change without notice. Contact Dryvit Systems Canada to ensure you have the most recent version.