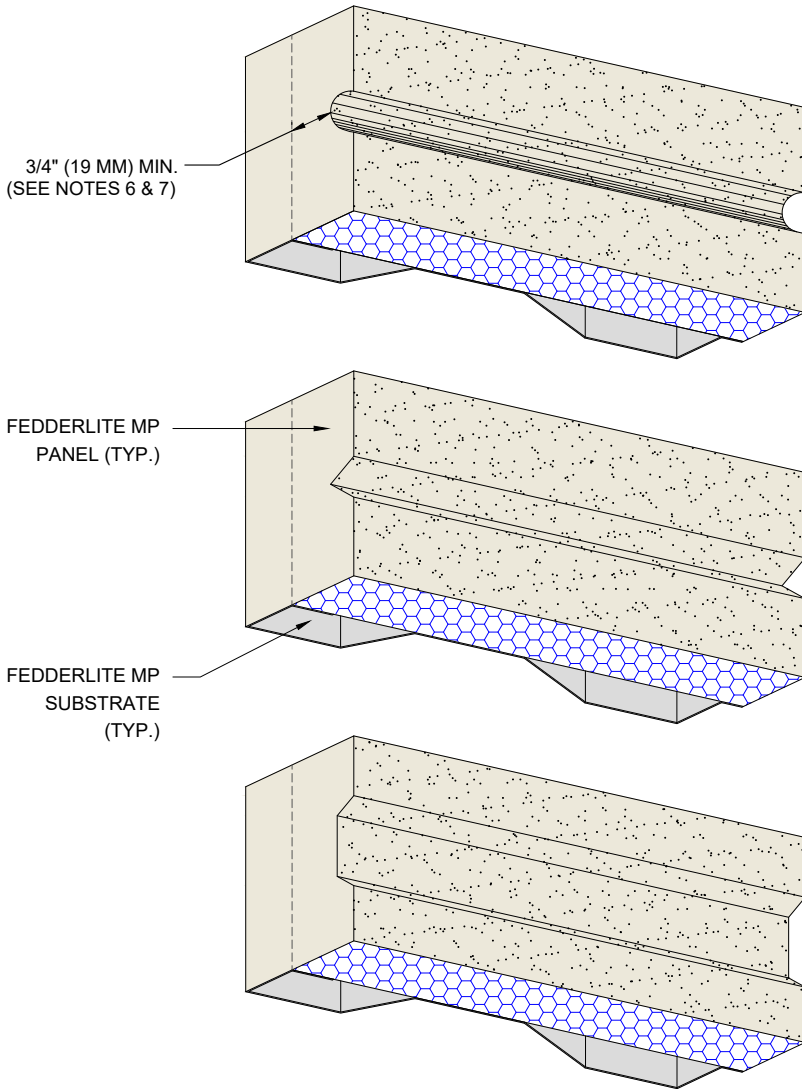
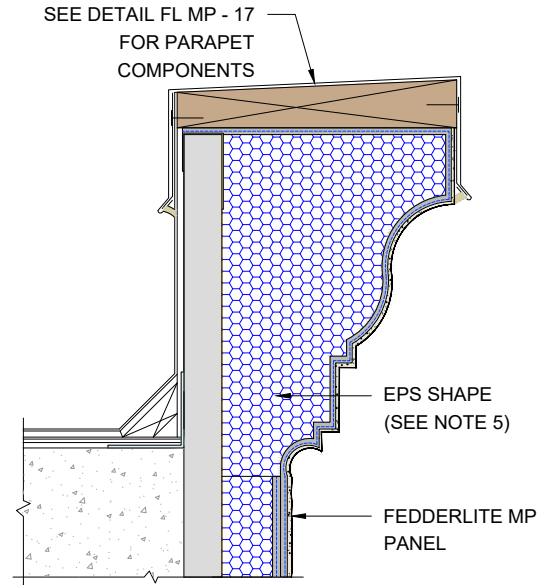


**AESTHETIC REVEALS  
SECTION**



**EPS SHAPE  
SECTION**



**NOTES:**

1. DRYVIT RECOMMENDS THAT GROUND FLOOR APPLICATIONS AND ALL FACADES EXPOSED TO ABNORMAL STRESS, HIGH TRAFFIC, OR DELIBERATE IMPACT HAVE THE BASE COAT REINFORCED WITH PANZER® MESH PRIOR TO STANDARD OR STANDARD PLUS MESH. LOCATION OF HIGH IMPACT ZONES SHOULD BE INDICATED ON CONTRACT DRAWINGS.
2. STRUCTURAL ELEMENTS PER DESIGN ENGINEER.
3. FASTENER DESIGN PER APPROVED ENGINEERED SHOP DRAWINGS.
4. ALL FEDDERLITE MP MATERIAL TO RECEIVE DRYVIT LAMINA SHALL BE CLEANED WITH A DEGREASING AGENT.
5. MAXIMUM THICKNESS OF EPS BUILT OUT SHAPES SHALL NOT EXCEED 13" (330 MM) AT ANY POINT MEASURED FROM THE SUBSTRATE.
6. CARE MUST BE GIVEN SO THAT FASTENERS DO NOT ALIGN WITH AESTHETIC REVEALS.
7. SLOPE BOTTOM EDGE OF REVEAL FOR POSITIVE DRAINAGE.

*The architecture, engineering, and design of the project using the Dryvit products are the responsibility of the project's design professional. All products and systems must comply with local building codes and standards. This detail is for general information and guidance only and Dryvit specifically disclaims any liability for the use of this detail. The project design professional determines, in its sole discretion, whether this detail or a functionally equivalent detail is best suited for the project. This detail is subject to change without notice. Contact Dryvit to ensure you have the most recent version.*

**Fedderlite® MP Panel System**

Detail: Aesthetic Reveals and EPS Shapes

File Name:

Drawn by: EM

Checked by: RB

Scale: NTS

Date: 2/6/2023

FL MP - 22



Dryvit Technical Support: 800-556-7752

www.tremcocpg.com



Construction Products Group