

Outsulite® Securock® ExoAir® 430 Panel System

Prefabricated, Insulated, Light Gauge Steel Stud
Exterior Wall Panels with an Air/Water Barrier

USG | **TRESCO**
SECUROCK® EXOAIR® 430

Dryvit™
DS959

Outsulite® Securock® ExoAir® 430 Panel System Installation Details

Table of Contents

Detail

OUTSULITE SECUROCK EXOAIR 430 PANEL SYSTEM	OSL SE430-1
BOARD JOINT AND FASTENER TREATMENT	OSL SE430-2
ROUGH OPENING PREPARATION AND FLASHING INTEGRATION	OSL SE430-3
EPS BOARD INSTALLATION	OSL SE430-4
EPS PREPARATION AT WALL PENETRATIONS	OSL SE430-5
TERMINATION AT SLAB ON GRADE	OSL SE430-6
TERMINATION AT OPENINGS	OSL SE430-7
HEAD / SILL FLASHING INTEGRATION	OSL SE430-8
INSIDE / OUTSIDE CORNERS	OSL SE430-9
HORIZONTAL PANEL CONNECTION	OSL SE430-10
HORIZONTAL PANEL JOINT	OSL SE430-11
VERTICAL PANEL JOINT	OSL SE430-12
PARAPET PANEL - METAL COPING PENETRATIONS	OSL SE430-13
FASTENER THROUGH SYSTEM	OSL SE430-14
AESTHETIC REVEALS	OSL SE430-15
EPS SHAPE	OSL SE430-16

NOTE:

DRYVIT, TREMCO AND USG MAKES NO REPRESENTATION REGARDING CONFORMITY OF ITS SUGGESTIONS TO MODEL BUILDING CODES, ENGINEERING CRITERIA, SPECIFIC APPLICATIONS, OR PROJECT LOCATIONS. ALL COMPONENTS INDICATED IN ILLUSTRATIONS, AS WELL AS OTHERS THAT MAY BE REQUIRED FOR THE INTEGRITY OF THE SYSTEM SHALL BE DESIGNED, DETAILED, AND ENGINEERED BY REPRESENTATIVES OF THE ARCHITECT, OWNER, OR CONTRACTOR TO BE IN CONFORMANCE WITH MODEL CODES, ARCHITECTURAL, AND ENGINEERING REQUIREMENTS PERTAINING TO SPECIFIC BUILDING PROJECTS.

DRYVIT, TREMCO AND USG MAKE NO WARRANTY, EXPRESSED OR IMPLIED, AS TO THE ARCHITECTURAL DESIGN, ENGINEERING, OR WORKMANSHIP OF PROJECTS UTILIZING DRYVIT SYSTEMS OR PRODUCTS.

THE LIABILITIES OF DRYVIT, TREMCO AND USG SHALL BE AS STATED IN THE DRYVIT STANDARD WARRANTY. CONTACT DRYVIT, TREMCO AND USG FOR A FULL AND COMPLETE COPY OF THE WARRANTY.

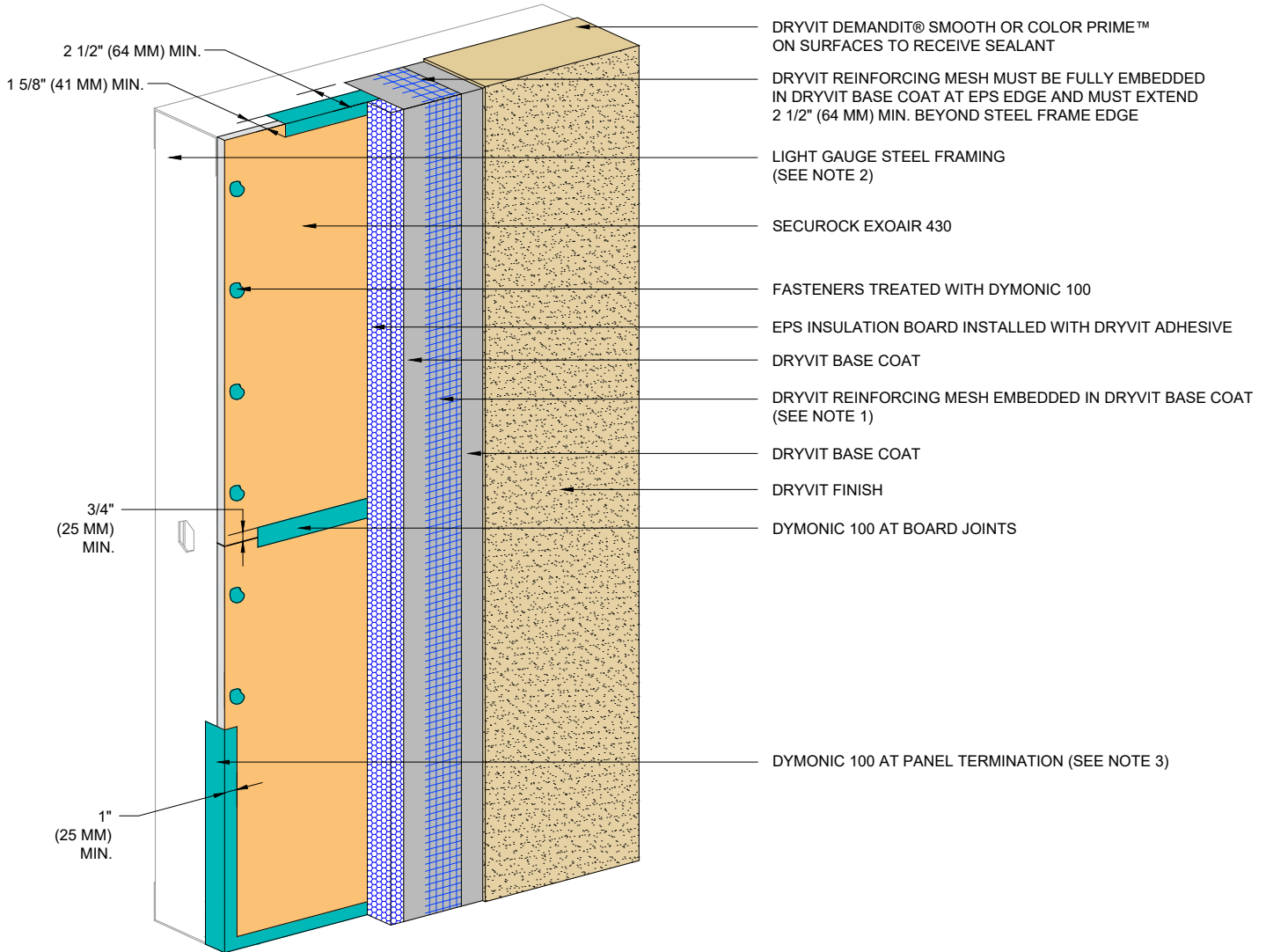


Dryvit Technical Support: 800-556-7752

The architecture, engineering, and design of the project using the Dryvit Tremco and USG products are the responsibility of the project's design professional. All products and systems must comply with local building codes and standards. This detail is for general information and guidance only and Dryvit Tremco and USG specifically disclaims any liability for the use of this detail. The project design professional determines, in its sole discretion, whether this detail or a functionally equivalent detail is best suited for the project. This detail is subject to change without notice. Contact Dryvit Tremco and USG to ensure you have the most recent version.

Outsulite® Securock® ExoAir® 430 Panel System

 SECUROCK® EXOAIR® 430 <small>Technical Support: 866-209-2404</small>	Detail: Outsulite Securock ExoAir 430 Panel System Table of Contents			File Name:	 TREMCO <small>Construction Products Group</small>
	Drawn by: HDE	Checked by:	Scale: NTS	Date: 1/9/2023	
<small>www.tremcocpg.com</small>					



NOTE:

1. DRYVIT RECOMMENDS THAT GROUND FLOOR APPLICATIONS AND ALL FACADES EXPOSED TO ABNORMAL STRESS, HIGH TRAFFIC, OR DELIBERATE IMPACT HAVE THE BASE COAT REINFORCED WITH PANZER® MESH PRIOR TO STANDARD OR STANDARD PLUS MESH. LOCATION OF HIGH IMPACT ZONES SHOULD BE INDICATED ON CONTRACT DRAWINGS.
2. LIGHT GAUGE STEEL FRAME SHALL BE DESIGNED FOR SPECIFIC PROJECT LOADS AND CONDITIONS TO MEET LOCAL BUILDING CODES BY LICENSED ENGINEER.
3. APPLY DYMONIC 100 AT 40 MILS 1" (25 MM) MIN. ONTO FACE OF SECUROCK EXOAIR 430 PANEL AND 1-5/8" (41 MM) MIN. ONTO OUTSULITE PANEL EDGE. AT IN-PLANE BOARD JOINTS APPLY DYMONIC 100 ENSURING MINIMUM OVERLAP OF 3/4" (19 MM) ONTO EACH PANEL AT 40 MILS.

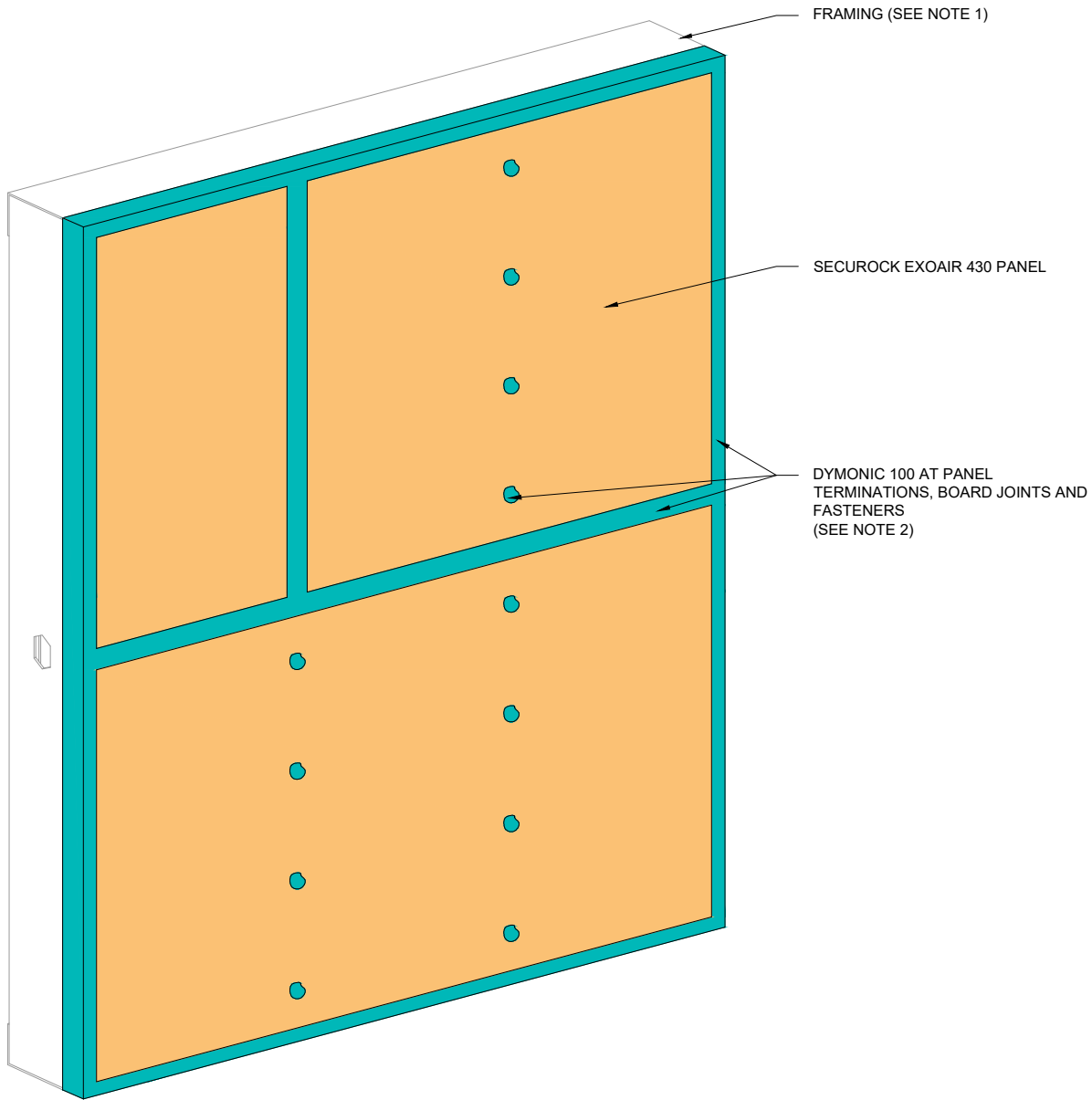
The architecture, engineering, and design of the project using the Dryvit Tremco and USG products are the responsibility of the project's design professional. All products and systems must comply with local building codes and standards. This detail is for general information and guidance only and Dryvit Tremco and USG specifically disclaims any liability for the use of this detail. The project design professional determines, in its sole discretion, whether this detail or a functionally equivalent detail is best suited for the project. This detail is subject to change without notice. Contact Dryvit Tremco and USG to ensure you have the most recent version.



Dryvit Technical Support: 800-556-7752

Outsulite® Securock® ExoAir® 430 Panel System

 SECUROCK® EXOAIR® 430 <small>Technical Support: 866-209-2404</small>	Detail: Outsulite Securock ExoAir 430 Panel System			File Name:	 Construction Products Group
	Drawn by: HDE	Checked by:	Scale: NTS	Date: 1/9/2023	
<small>www.tremcocpg.com</small>					



NOTE:

1. LIGHT GAUGE STEEL FRAME SHALL BE DESIGNED FOR SPECIFIC PROJECT LOADS AND CONDITIONS TO MEET LOCAL BUILDING CODES BY LICENSED ENGINEER.
2. APPLY DYMONIC 100 AT 40 MILS 1" (25 MM) MIN. ONTO FACE OF SECUROCK EXOAIR 430 PANEL AND 1-5/8" (41 MM) MIN. ONTO OUTSULITE PANEL EDGE. AT IN-PLANE BOARD JOINTS APPLY DYMONIC 100 ENSURING MINIMUM OVERLAP OF 3/4" (19 MM) ONTO EACH PANEL AT 40 MILS.

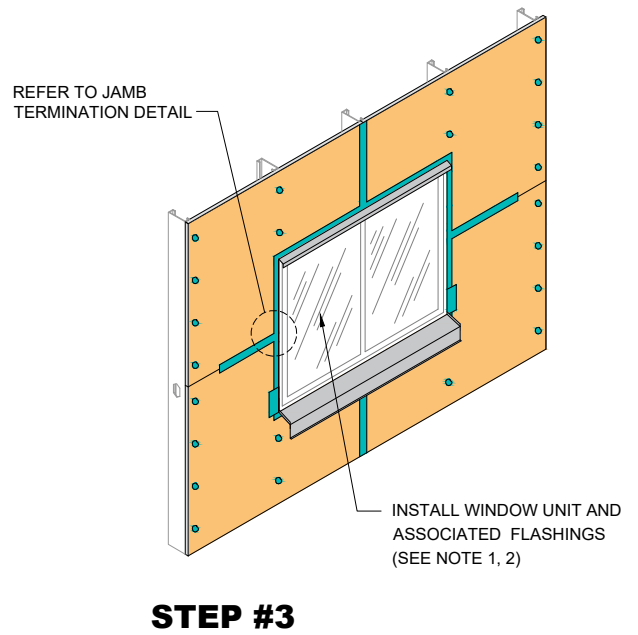
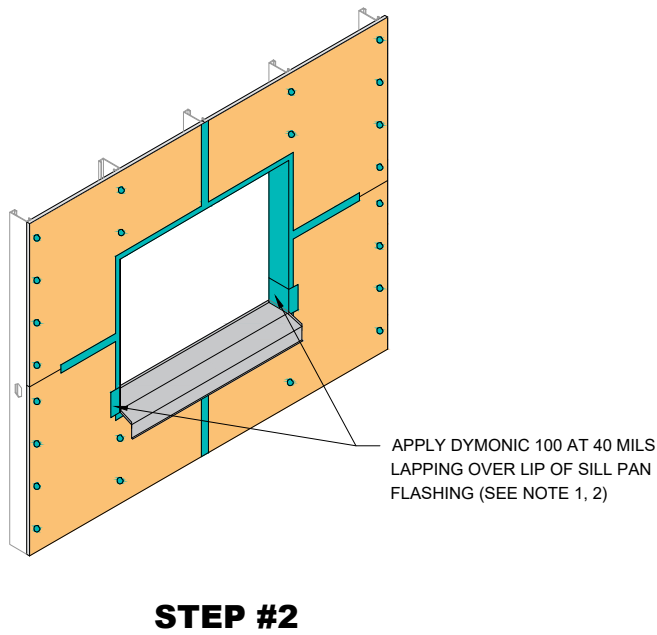
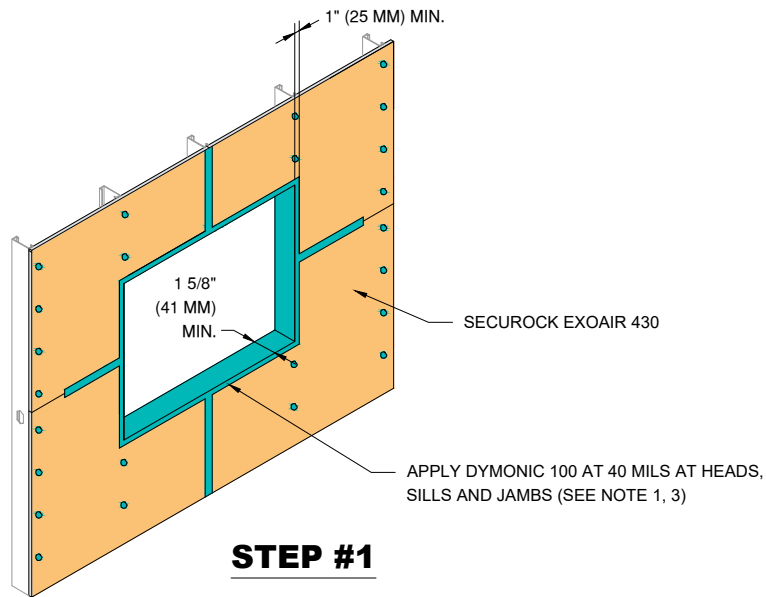


Dryvit Technical Support: 800-556-7752

The architecture, engineering, and design of the project using the Dryvit Tremco and USG products are the responsibility of the project's design professional. All products and systems must comply with local building codes and standards. This detail is for general information and guidance only and Dryvit Tremco and USG specifically disclaims any liability for the use of this detail. The project design professional determines, in its sole discretion, whether this detail or a functionally equivalent detail is best suited for the project. This detail is subject to change without notice. Contact Dryvit Tremco and USG to ensure you have the most recent version.

Outsulite® Securock® ExoAir® 430 Panel System

<p>SECUROCK® EXOAIR® 430</p> <p>Technical Support: 866-209-2404</p>	Detail: Board Joint and Fastener Treatment			File Name:
	Drawn by: HDE	Checked by:	Scale: NTS	Date: 1/9/2023
www.tremcocpg.com				<p>Construction Products Group</p>



NOTE:

1. REFER TO HEAD, SILL AND JAMB DETAILS FOR FLASHING INTEGRATION.
2. INSTALL WINDOW UNIT AND ASSOCIATED FLASHINGS PER MANUFACTURER'S RECOMMENDATIONS, CODE REQUIREMENTS AND PROJECT DOCUMENTS.
3. APPLY DYMONIC 100 AT 40 MILS 1" (25 MM) MIN. ONTO FACE OF SECUROCK EXOAIR 430 PANEL AND 1 5/8" (41 MM) MIN. INTO ROUGH OPENING OR PAST PRIMARY SEAL OF WINDOW, WHICHEVER IS GREATER.



Dryvit Technical Support: 800-556-7752

The architecture, engineering, and design of the project using the Dryvit Tremco and USG products are the responsibility of the project's design professional. All products and systems must comply with local building codes and standards. This detail is for general information and guidance only and Dryvit Tremco and USG specifically disclaims any liability for the use of this detail. The project design professional determines, in its sole discretion, whether this detail or a functionally equivalent detail is best suited for the project. This detail is subject to change without notice. Contact Dryvit Tremco and USG to ensure you have the most recent version.

Outsultite® Securock® ExoAir® 430 Panel System



Detail: Rough Opening Preparation and Flashing Integration

File Name:

Drawn by: HDE

Checked by:

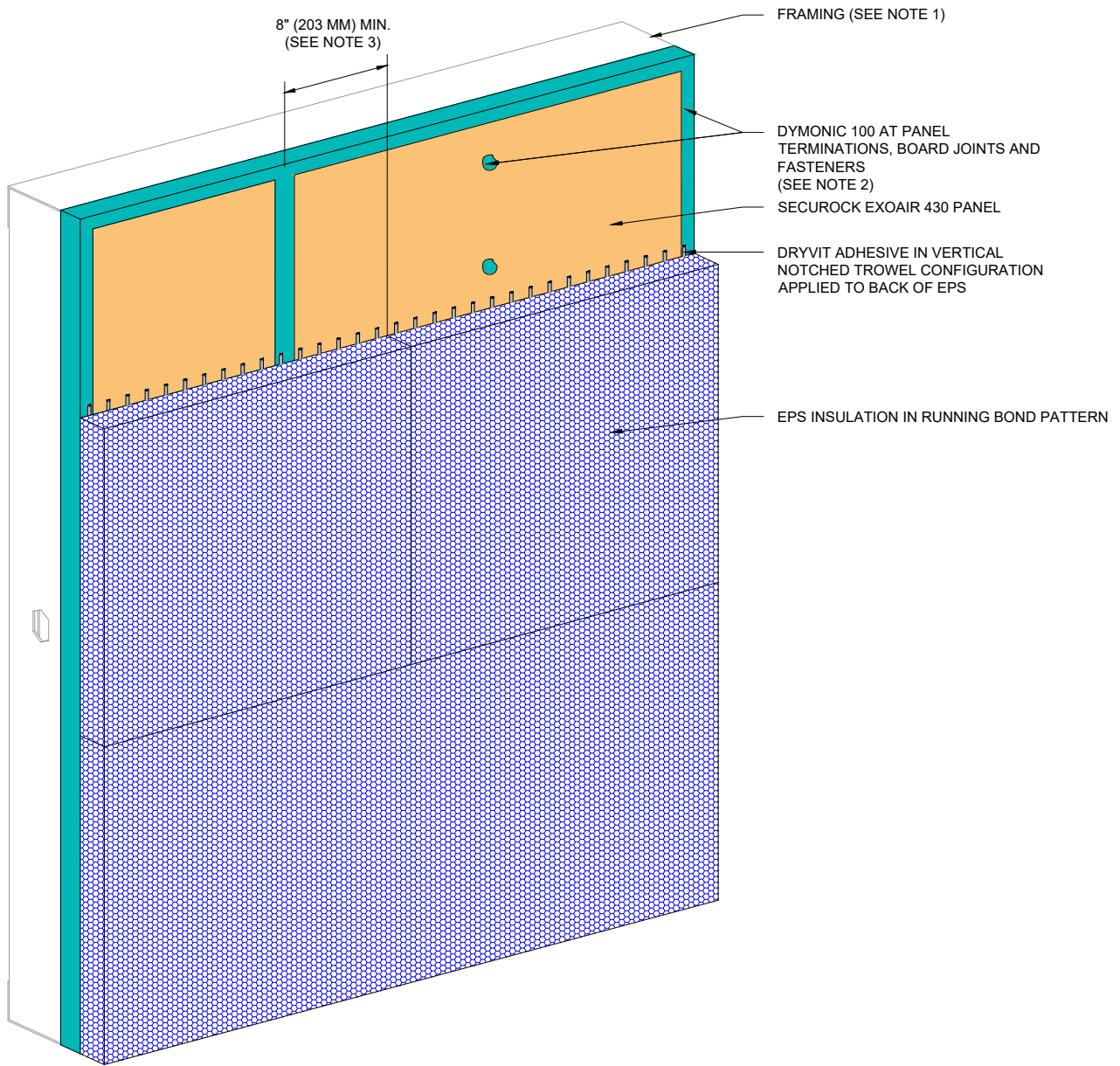
Scale: NTS

Date: 1/9/2023

OSL SE430-3

www.tremcocpg.com





8" (203 MM) MIN.
(SEE NOTE 3)

FRAMING (SEE NOTE 1)

DYMONIC 100 AT PANEL
TERMINATIONS, BOARD JOINTS AND
FASTENERS
(SEE NOTE 2)

SECUROCK EXOAIR 430 PANEL

DRYVIT ADHESIVE IN VERTICAL
NOTCHED TROWEL CONFIGURATION
APPLIED TO BACK OF EPS

EPS INSULATION IN RUNNING BOND PATTERN

NOTE:

1. LIGHT GAUGE STEEL FRAME SHALL BE DESIGNED FOR SPECIFIC PROJECT LOADS AND CONDITIONS TO MEET LOCAL BUILDING CODES BY LICENSED ENGINEER.
2. APPLY DYMONIC 100 AT 40 MILS 1" (25 MM) MIN. ONTO FACE OF SECUROCK EXOAIR 430 PANEL AND 1-5/8" (41 MM) MIN. ONTO OUTSULITE PANEL EDGE. AT IN-PLANE BOARD JOINTS ENSURE MINIMUM OVERLAP OF 3/4" (19 MM) MIN. AT 40 MILS.
3. OFFSET SECUROCK EXOAIR 430 JOINTS FROM INSULATION BOARD JOINTS BY 8" (203 MM) MINIMUM, HORIZONTALLY AND VERTICALLY.



Dryvit Technical Support: 800-556-7752

The architecture, engineering, and design of the project using the Dryvit Tremco and USG products are the responsibility of the project's design professional. All products and systems must comply with local building codes and standards. This detail is for general information and guidance only and Dryvit Tremco and USG specifically disclaims any liability for the use of this detail. The project design professional determines, in its sole discretion, whether this detail or a functionally equivalent detail is best suited for the project. This detail is subject to change without notice. Contact Dryvit Tremco and USG to ensure you have the most recent version.

Outsulite® Securock® ExoAir® 430 Panel System



Technical Support: 866-209-2404

Detail: EPS Board Installation

File Name:

Drawn by: HDE

Checked by:

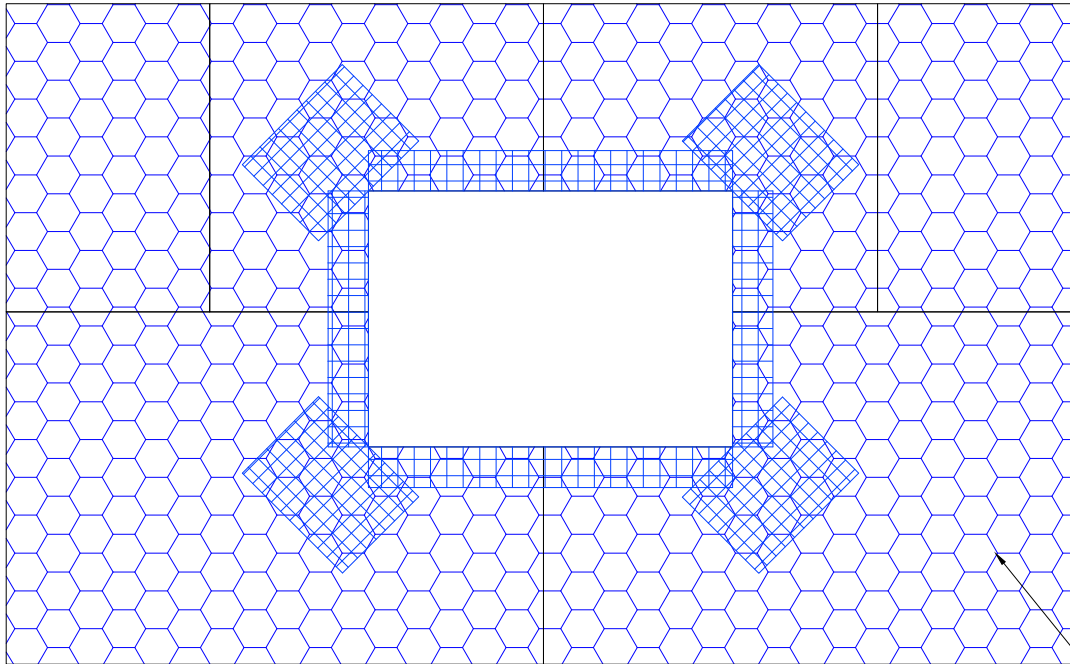
Scale: NTS

Date: 1/9/2023

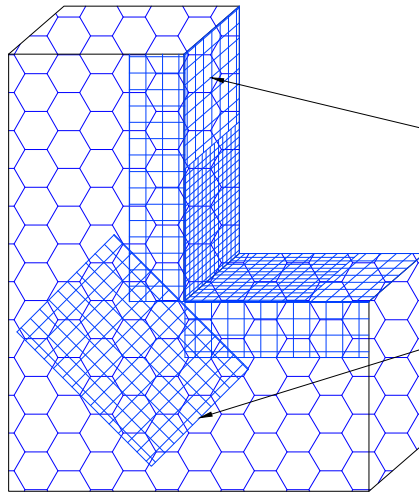
OSL SE430-4

www.tremcocpg.com





EPS INSULATION
(SEE NOTE 2)



DRYVIT DETAIL MESH® WRAPPED
TO BACKSIDE OF EPS MIN. 2 1/2" (64 MM)

DRYVIT DETAIL REINFORCING MESH
9 1/2" (241 MM) X 12" (305 MM) (TYP.)
(SEE NOTE 3)

NOTE:

1. DRYVIT RECOMMENDS THAT GROUND FLOOR APPLICATIONS AND ALL FACADES EXPOSED TO ABNORMAL STRESS, HIGH TRAFFIC, OR DELIBERATE IMPACT HAVE THE BASE COAT REINFORCED WITH PANZER® MESH PRIOR TO STANDARD OR STANDARD PLUS MESH. LOCATION OF HIGH IMPACT ZONES SHOULD BE INDICATED ON CONTRACT DRAWINGS.
2. LOCATE INSULATION BOARDS SUCH THAT BOARD EDGES DO NOT ALIGN WITH CORNERS OF PENETRATION.
3. APPLY A PIECE OF 9 1/2" (241 MM) X 12" (305 MM) DETAIL REINFORCING MESH DIAGONALLY AT EACH CORNER.



Dryvit Technical Support: 800-556-7752

The architecture, engineering, and design of the project using the Dryvit Tremco and USG products are the responsibility of the project's design professional. All products and systems must comply with local building codes and standards. This detail is for general information and guidance only and Dryvit Tremco and USG specifically disclaims any liability for the use of this detail. The project design professional determines, in its sole discretion, whether this detail or a functionally equivalent detail is best suited for the project. This detail is subject to change without notice. Contact Dryvit Tremco and USG to ensure you have the most recent version.

Outsultite® Securock® ExoAir® 430 Panel System



SECUROCK® EXOAIR® 430

Technical Support: 866-209-2404

Detail: EPS Preparation at Wall Penetrations

File Name:

Drawn by: HDE

Checked by:

Scale: NTS

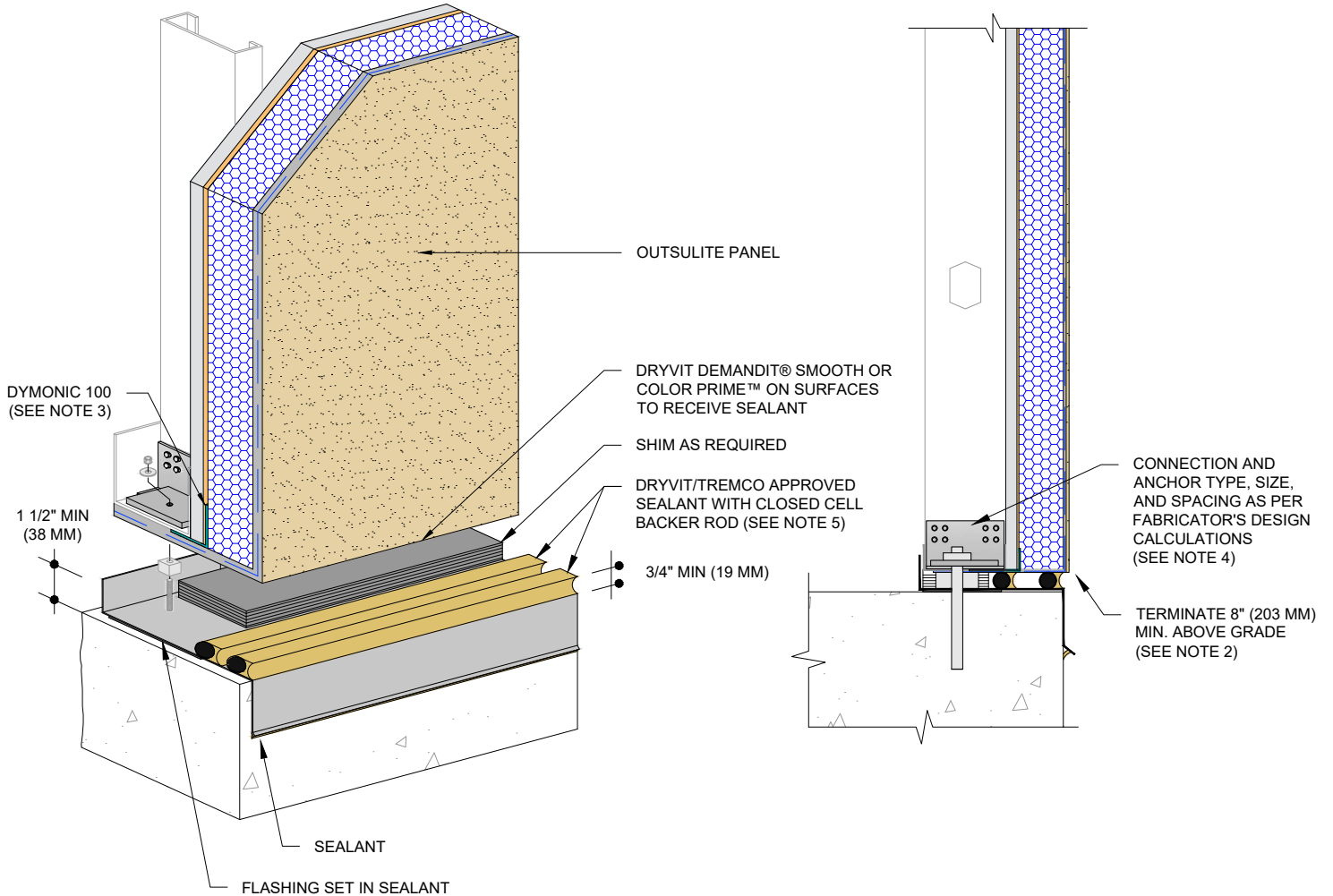
Date: 1/9/2023

OSL SE430-5

www.tremcocpg.com



Construction Products Group



NOTE:

1. DRYVIT RECOMMENDS THAT GROUND FLOOR APPLICATIONS AND ALL FACADES EXPOSED TO ABNORMAL STRESS, HIGH TRAFFIC, OR DELIBERATE IMPACT HAVE THE BASE COAT REINFORCED WITH PANZER® MESH PRIOR TO STANDARD OR STANDARD PLUS MESH. LOCATION OF HIGH IMPACT ZONES SHOULD BE INDICATED ON CONTRACT DRAWINGS.
2. TERMINATION OF THE OUTSULATION SYSTEM TO BE 8" (203 MM) MINIMUM ABOVE GRADE. REFER TO OUTSULATION LITERATURE.
3. APPLY DYMONIC 100 AT 40 MILS 1" (25 MM) MIN. ONTO FACE OF SECUROCK EXOAIR 430 PANEL AND 1-5/8" (41 MM) MIN. ONTO OUTSULITE PANEL EDGE.
4. REFER TO PUBLICATION DS928 FOR OUTSULITE PANEL SYSTEM TYPICAL CONNECTION DETAILS.
5. REFERENCE DS920 FOR APPROVED SEALANTS.



Dryvit Technical Support: 800-556-7752

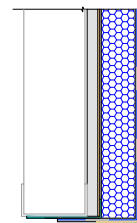
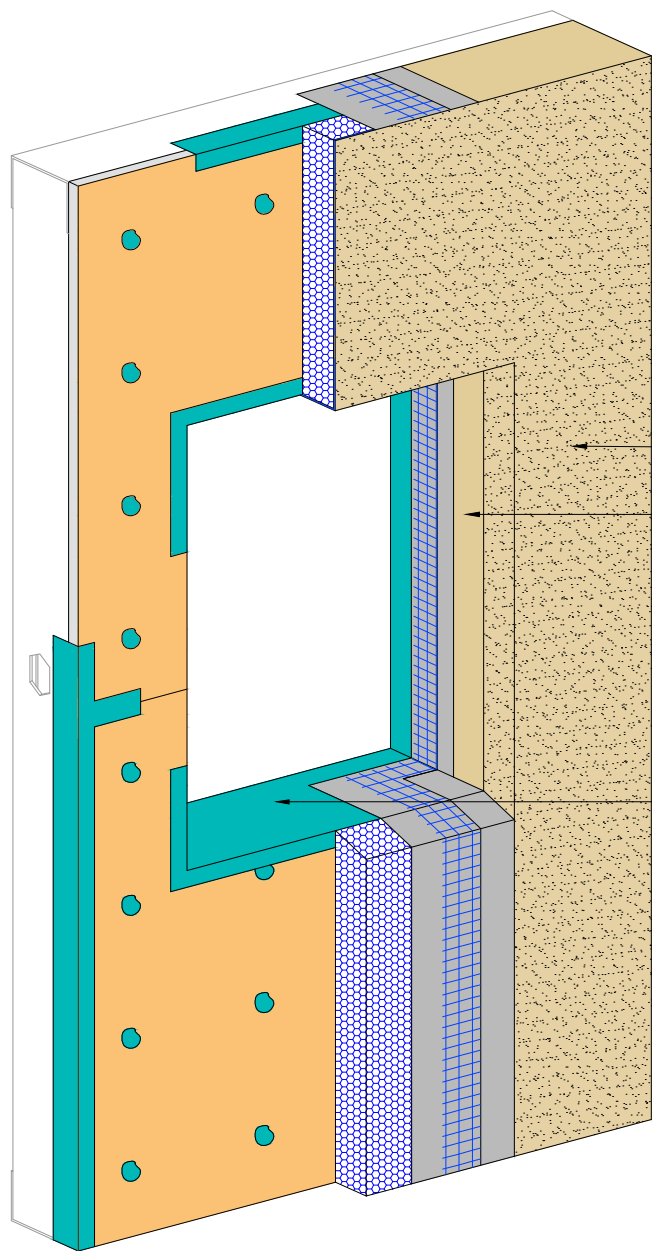
The architecture, engineering, and design of the project using the Dryvit Tremco and USG products are the responsibility of the project's design professional. All products and systems must comply with local building codes and standards. This detail is for general information and guidance only and Dryvit Tremco and USG specifically disclaims any liability for the use of this detail. The project design professional determines, in its sole discretion, whether this detail or a functionally equivalent detail is best suited for the project. This detail is subject to change without notice. Contact Dryvit Tremco and USG to ensure you have the most recent version.

Outsulate® Securock® ExoAir® 430 Panel System

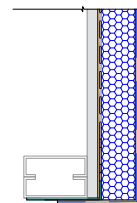


Detail: Termination at Slab on Grade				File Name:
Drawn by: HDE	Checked by:	Scale: NTS	Date: 1/9/2023	OSL SE430-6
www.tremcocpg.com				

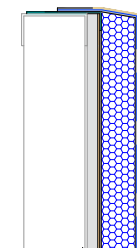




**SECTION A-A
HEAD**



**SECTION B-B
JAMB**



**SECTION C-C
SILL**

OUTSULITE PANEL (SEE NOTE 2)

DRYVIT DEMANDIT® SMOOTH OR COLOR PRIME™ ON SURFACES TO RECEIVE SEALANT (SEE NOTE 2)

DYMONIC 100 (SEE NOTE 3)

NOTE:

1. DRYVIT RECOMMENDS THAT GROUND FLOOR APPLICATIONS AND ALL FACADES EXPOSED TO ABNORMAL STRESS, HIGH TRAFFIC, OR DELIBERATE IMPACT HAVE THE BASE COAT REINFORCED WITH PANZER® MESH PRIOR TO STANDARD OR STANDARD PLUS MESH. LOCATION OF HIGH IMPACT ZONES SHOULD BE INDICATED ON CONTRACT DRAWINGS.
2. COORDINATE WITH WINDOW SHOP DRAWINGS FOR TERMINATION OF FINISH.
3. APPLY DYMONIC 100 AT 40 MILS 1" (25 MM) MIN. ONTO FACE OF SECUROCK EXOAIR 430 PANEL AND 1-5/8" (41 MM) MIN. ONTO OUTSULITE PANEL EDGE. APPLY DYMONIC 100 AT 40 MILS 1 5/8" (41 MM) MIN. INTO ROUGH OPENING OR PAST PRIMARY SEAL OF WINDOW, WHICHEVER IS GREATER.



Dryvit Technical Support: 800-556-7752

The architecture, engineering, and design of the project using the Dryvit Tremco and USG products are the responsibility of the project's design professional. All products and systems must comply with local building codes and standards. This detail is for general information and guidance only and Dryvit Tremco and USG specifically disclaims any liability for the use of this detail. The project design professional determines, in its sole discretion, whether this detail or a functionally equivalent detail is best suited for the project. This detail is subject to change without notice. Contact Dryvit Tremco and USG to ensure you have the most recent version.

Outsulite® Securock® ExoAir® 430 Panel System



Technical Support: 866-209-2404

Detail: Termination at Openings

File Name:

Drawn by: HDE

Checked by:

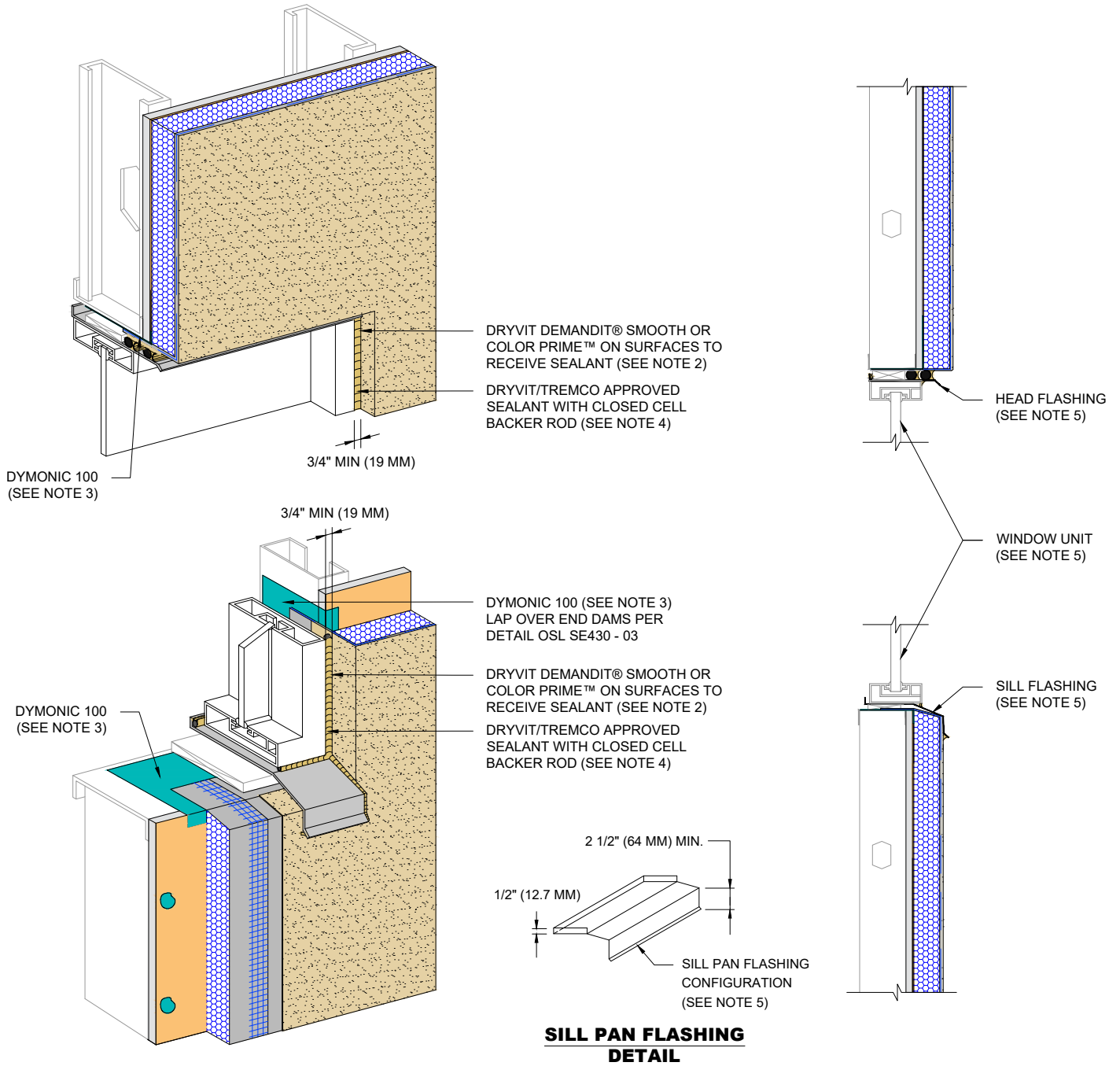
Scale: NTS

Date: 1/9/2023

OSL SE430-7

www.tremcocpg.com





**SILL PAN FLASHING
DETAIL**

NOTE:

1. DRYVIT RECOMMENDS THAT GROUND FLOOR APPLICATIONS AND ALL FACADES EXPOSED TO ABNORMAL STRESS, HIGH TRAFFIC, OR DELIBERATE IMPACT HAVE THE BASE COAT REINFORCED WITH PANZER® MESH PRIOR TO STANDARD OR STANDARD PLUS MESH. LOCATION OF HIGH IMPACT ZONES SHOULD BE INDICATED ON CONTRACT DRAWINGS.
2. COORDINATE WITH WINDOW SHOP DRAWINGS FOR TERMINATION OF FINISH.
3. APPLY DYMONIC 100 AT 40 MILS 1" (25 MM) MIN. ONTO FACE OF SECUROCK EXOAIR 430 PANEL AND 1-5/8" (41 MM) MIN. ONTO OUTSULITE PANEL EDGE. APPLY DYMONIC 100 AT 40 MILS 1 5/8" (41 MM) MIN. INTO ROUGH OPENING OR PAST PRIMARY SEAL OF WINDOW, WHICHEVER IS GREATER.
4. REFERENCE DS920 FOR APPROVED SEALANTS.
5. INSTALL WINDOW UNIT AND ASSOCIATED FLASHINGS PER MANUFACTURER'S RECOMMENDATIONS, CODE REQUIREMENTS AND PROJECT DOCUMENTS.

The architecture, engineering, and design of the project using the Dryvit Tremco and USG products are the responsibility of the project's design professional. All products and systems must comply with local building codes and standards. This detail is for general information and guidance only and Dryvit Tremco and USG specifically disclaims any liability for the use of this detail. The project design professional determines, in its sole discretion, whether this detail or a functionally equivalent detail is best suited for the project. This detail is subject to change without notice. Contact Dryvit Tremco and USG to ensure you have the most recent version.



Dryvit Technical Support: 800-556-7752

Outsulate® Securock® ExoAir® 430 Panel System



Technical Support: 866-209-2404

Detail: Head / Sill Flashing Integration

Drawn by: HDE

Checked by:

Scale: NTS

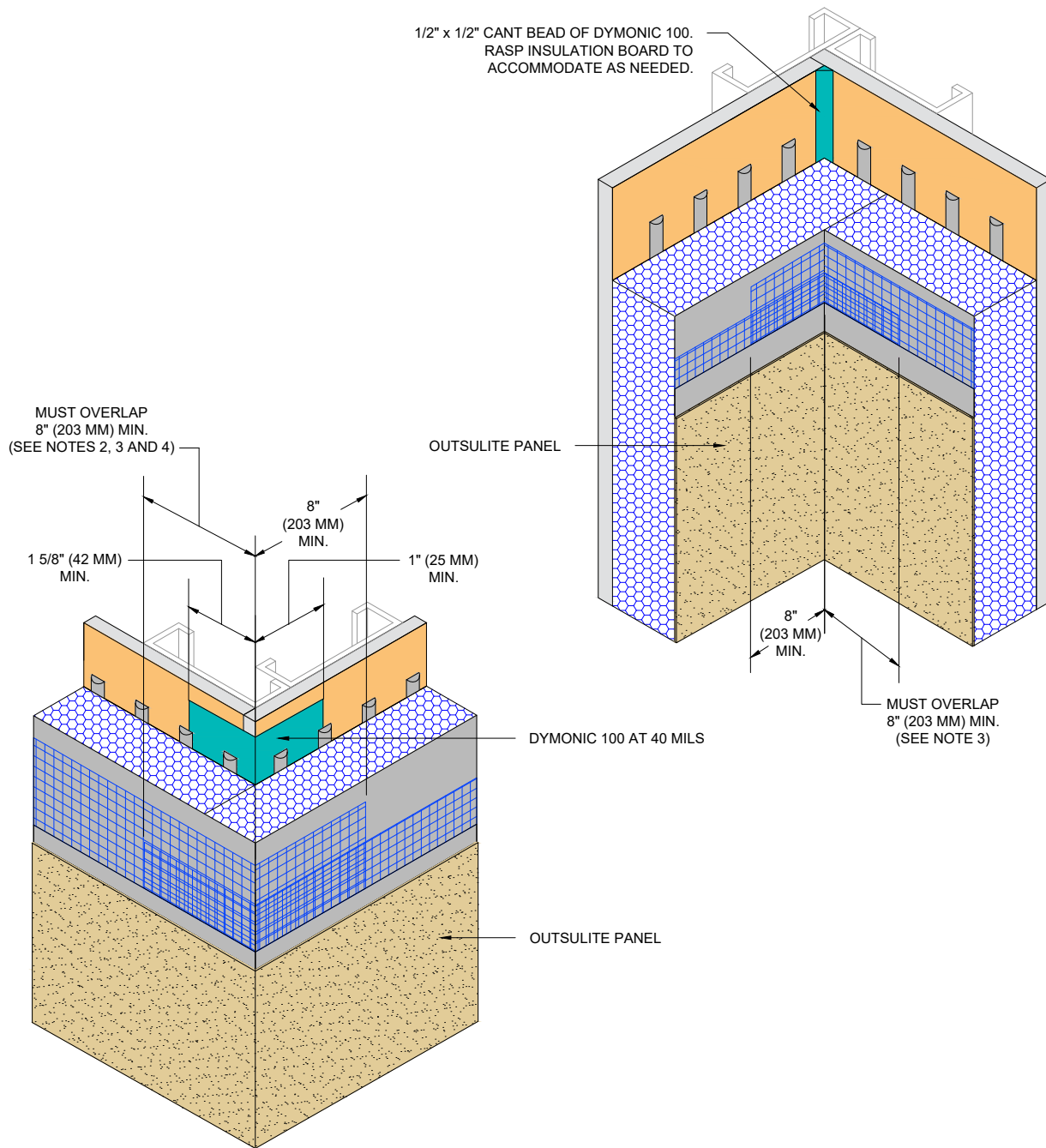
Date: 1/9/2023

File Name:

OSL SE430-8



www.tremcocpg.com



NOTE:

1. DRYVIT RECOMMENDS THAT GROUND FLOOR APPLICATIONS AND ALL FACADES EXPOSED TO ABNORMAL STRESS, HIGH TRAFFIC OR DELIBERATE IMPACT HAVE THE BASE COAT REINFORCED WITH PANZER® MESH PRIOR TO STANDARD OR STANDARD PLUS MESH. LOCATION OF HIGH IMPACT ZONES SHOULD BE INDICATED ON CONTRACT DRAWINGS.
2. DOUBLE WRAP OUTSIDE CORNERS WITH REINFORCING MESH OR USE CORNER MESH.
3. DO NOT LAP REINFORCING MESH WITHIN 8" (203 MM) OF A CORNER.
4. OUTSIDE INSULATION BOARD EDGES SHALL BE OFFSET.
5. APPLY DYMONIC 100 AT 40 MILS 1" (25 MM) MIN. ONTO FACE OF SECUROCK EXOAIR 430 PANEL AND 1-5/8" (41 MM) MIN. ONTO OUTSULITE PANEL EDGE.



Dryvit Technical Support: 800-556-7752

The architecture, engineering, and design of the project using the Dryvit Tremco and USG products are the responsibility of the project's design professional. All products and systems must comply with local building codes and standards. This detail is for general information and guidance only and Dryvit Tremco and USG specifically disclaims any liability for the use of this detail. The project design professional determines, in its sole discretion, whether this detail or a functionally equivalent detail is best suited for the project. This detail is subject to change without notice. Contact Dryvit Tremco and USG to ensure you have the most recent version.

Outsulite® Securock® ExoAir® 430 Panel System



Technical Support: 866-209-2404

Detail: Inside / Outside Corners

Drawn by: HDE

Checked by:

Scale: NTS

Date: 1/9/2023

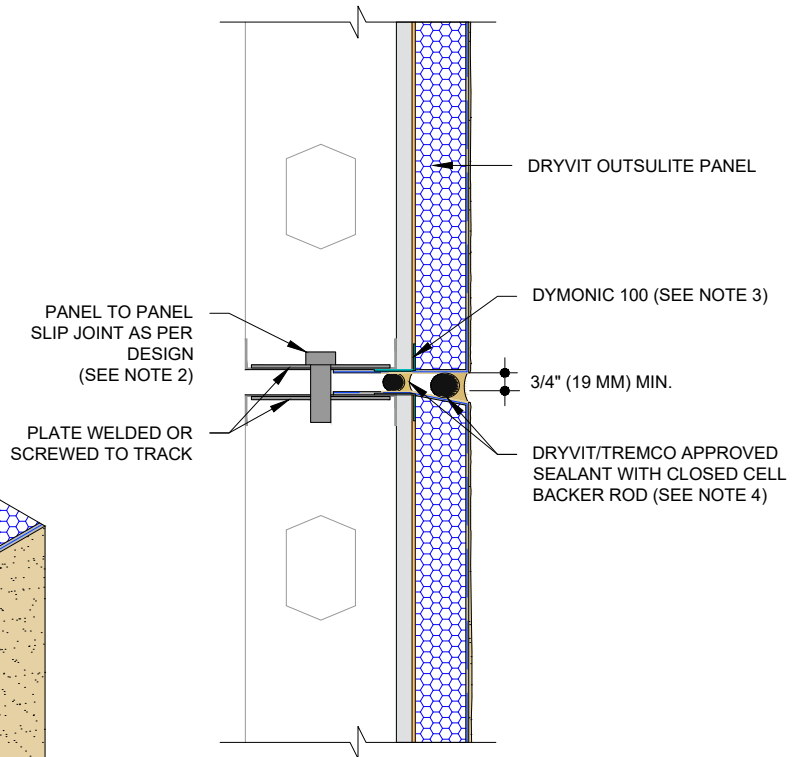
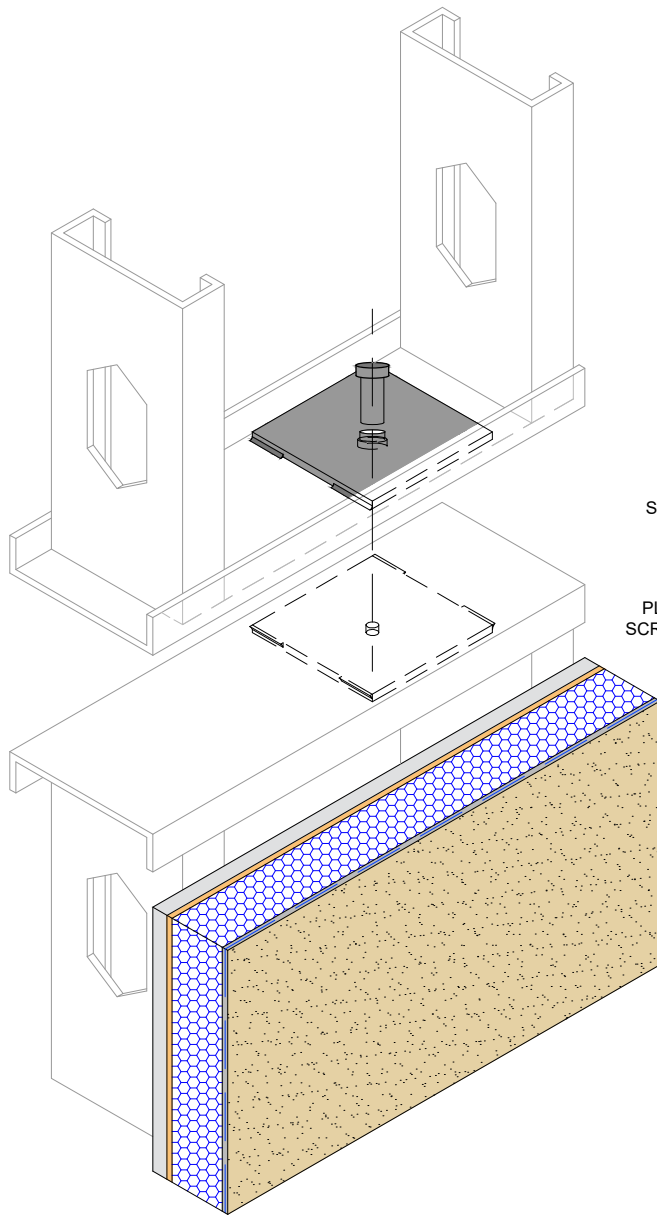
File Name:

OSL SE430-9



Construction Products Group

www.tremcocpg.com



NOTE:

1. DRYVIT RECOMMENDS THAT GROUND FLOOR APPLICATIONS AND ALL FACADES EXPOSED TO ABNORMAL STRESS, HIGH TRAFFIC, OR DELIBERATE IMPACT HAVE THE BASE COAT REINFORCED WITH PANZER® MESH PRIOR TO STANDARD OR STANDARD PLUS MESH. LOCATION OF HIGH IMPACT ZONES SHOULD BE INDICATED ON CONTRACT DRAWINGS.
2. PANEL JOINT LOCATIONS AS PER APPROVED SHOP DRAWINGS.
3. APPLY DYMONIC 100 AT 40 MILS 1" (25 MM) MIN. ONTO FACE OF SECUROCK EXOAIR 430 PANEL AND 1-5/8" (41 MM) MIN. ONTO OUTSULITE PANEL EDGE.
4. REFERENCE DS920 FOR APPROVED SEALANTS.



Dryvit Technical Support: 800-556-7752

The architecture, engineering, and design of the project using the Dryvit Tremco and USG products are the responsibility of the project's design professional. All products and systems must comply with local building codes and standards. This detail is for general information and guidance only and Dryvit Tremco and USG specifically disclaims any liability for the use of this detail. The project design professional determines, in its sole discretion, whether this detail or a functionally equivalent detail is best suited for the project. This detail is subject to change without notice. Contact Dryvit Tremco and USG to ensure you have the most recent version.

Outsulite® Securock® ExoAir® 430 Panel System



Technical Support: 866-209-2404

Detail: Horizontal Panel Connection

File Name:

Drawn by: HDE

Checked by:

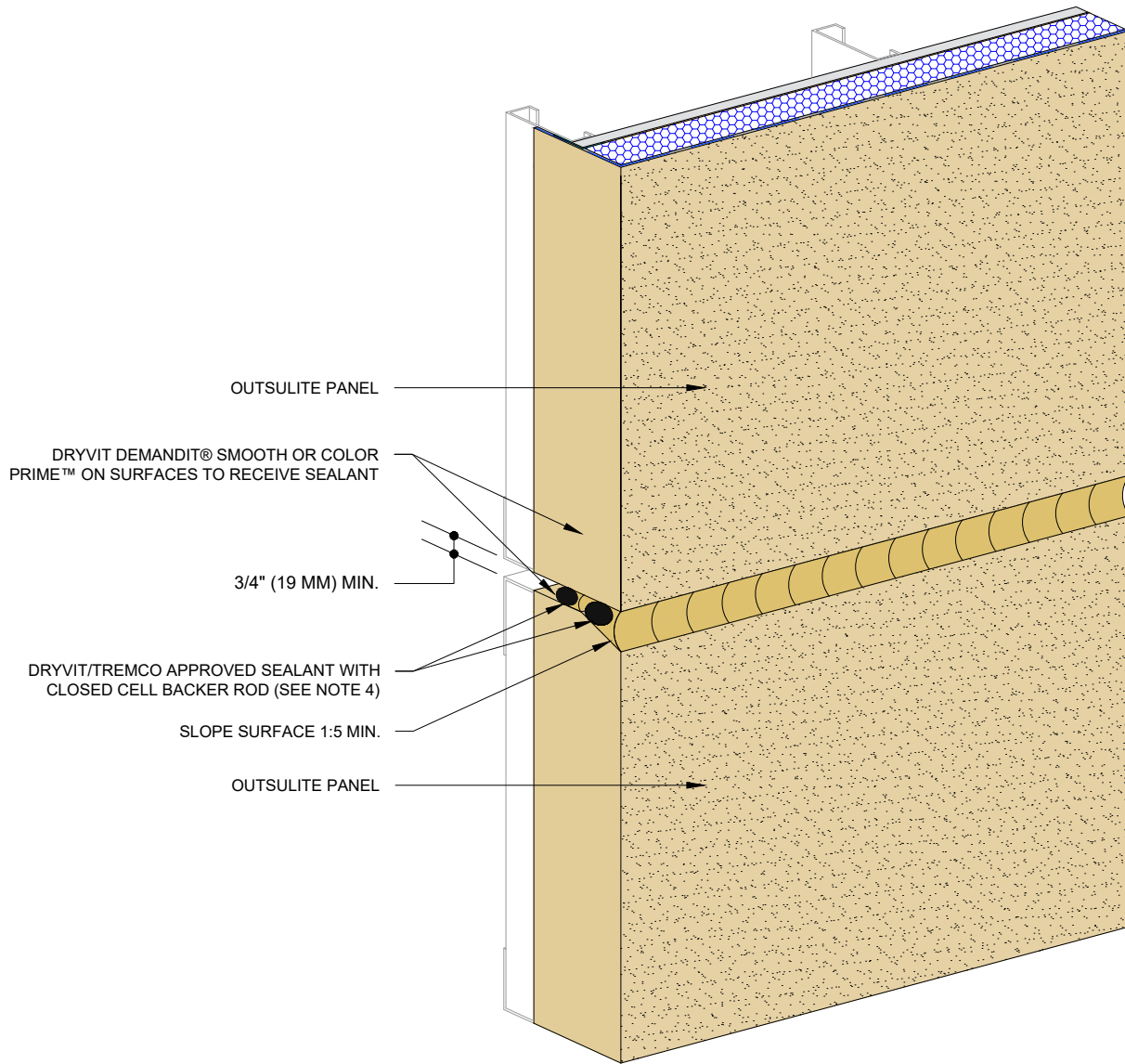
Scale: NTS

Date: 1/9/2023

OSL SE430-10

www.tremcocpg.com





NOTE:

1. DRYVIT RECOMMENDS THAT GROUND FLOOR APPLICATIONS AND ALL FACADES EXPOSED TO ABNORMAL STRESS, HIGH TRAFFIC, OR DELIBERATE IMPACT HAVE THE BASE COAT REINFORCED WITH PANZER® MESH PRIOR TO STANDARD OR STANDARD PLUS MESH. LOCATION OF HIGH IMPACT ZONES SHOULD BE INDICATED ON CONTRACT DRAWINGS.
2. PANEL JOINT LOCATIONS AS PER APPROVED SHOP DRAWINGS.
3. APPLY DYMONIC 100 AT 40 MILS 1" (25 MM) MIN. ONTO FACE OF SECUROCK EXOAIR 430 PANEL AND 1-5/8" (41 MM) MIN. ONTO OUTSULITE PANEL EDGE.
4. REFERENCE DS920 FOR APPROVED SEALANTS.



Dryvit Technical Support: 800-556-7752

The architecture, engineering, and design of the project using the Dryvit Tremco and USG products are the responsibility of the project's design professional. All products and systems must comply with local building codes and standards. This detail is for general information and guidance only and Dryvit Tremco and USG specifically disclaims any liability for the use of this detail. The project design professional determines, in its sole discretion, whether this detail or a functionally equivalent detail is best suited for the project. This detail is subject to change without notice. Contact Dryvit Tremco and USG to ensure you have the most recent version.

Outsulite® Securock® ExoAir® 430 Panel System

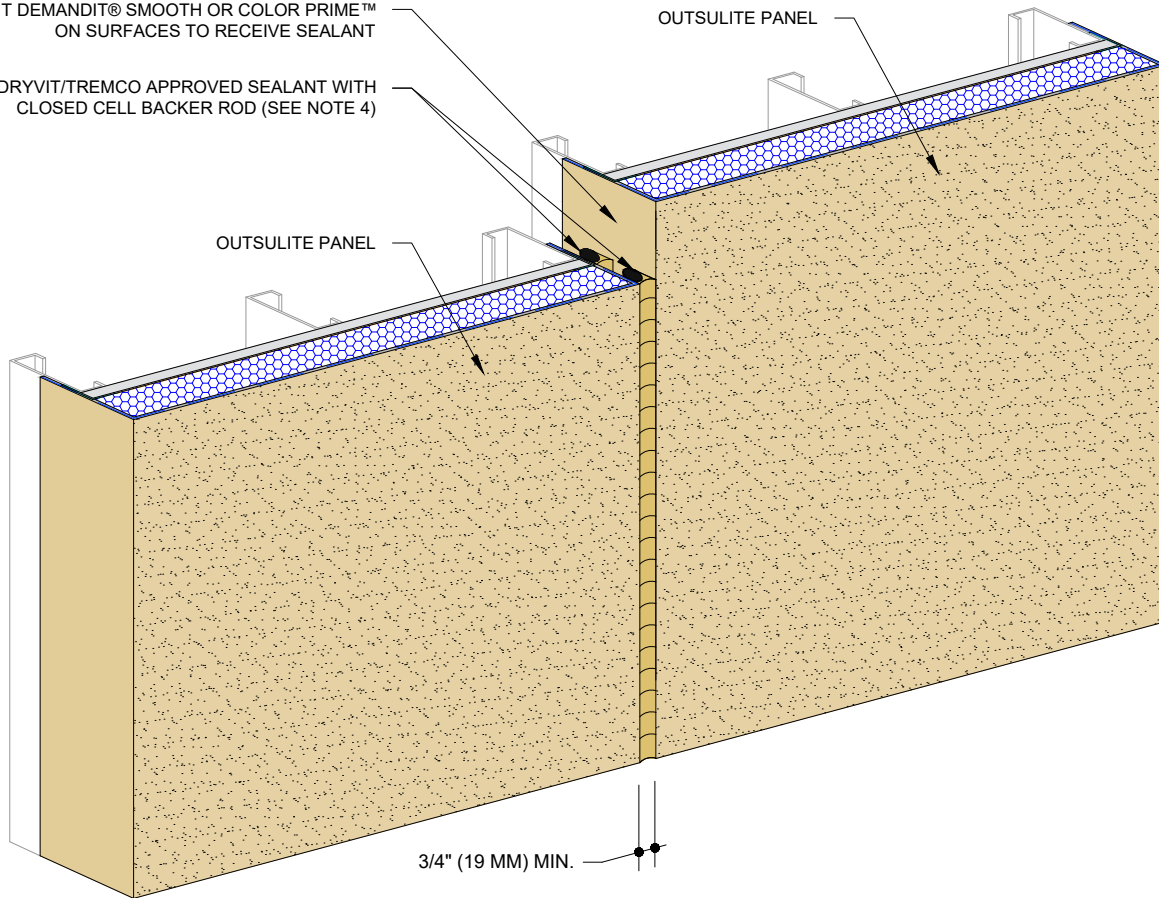
<p>SECUROCK® EXOAIR® 430</p> <p>Technical Support: 866-209-2404</p>	Detail: Horizontal Panel Joint			File Name:	<p>Construction Products Group</p>
	Drawn by: HDE	Checked by:	Scale: NTS	Date: 1/9/2023	
www.tremcocpg.com					

DRYVIT DEMANDIT® SMOOTH OR COLOR PRIME™
ON SURFACES TO RECEIVE SEALANT

DRYVIT/TREMCO APPROVED SEALANT WITH
CLOSED CELL BACKER ROD (SEE NOTE 4)

OUTSULITE PANEL

OUTSULITE PANEL



3/4" (19 MM) MIN.

NOTE:

1. DRYVIT RECOMMENDS THAT GROUND FLOOR APPLICATIONS AND ALL FACADES EXPOSED TO ABNORMAL STRESS, HIGH TRAFFIC, OR DELIBERATE IMPACT HAVE THE BASE COAT REINFORCED WITH PANZER® MESH PRIOR TO STANDARD OR STANDARD PLUS MESH. LOCATION OF HIGH IMPACT ZONES SHOULD BE INDICATED ON CONTRACT DRAWINGS.
2. PANEL JOINT LOCATIONS AS PER APPROVED SHOP DRAWINGS.
3. APPLY DYMONIC 100 AT 40 MILS 1" (25 MM) MIN. ONTO FACE OF SECUROCK EXOAIR 430 PANEL AND 1-5/8" (41 MM) MIN. ONTO OUTSULITE PANEL EDGE.
4. REFERENCE DS920 FOR APPROVED SEALANTS.



Dryvit Technical Support: 800-556-7752

The architecture, engineering, and design of the project using the Dryvit Tremco and USG products are the responsibility of the project's design professional. All products and systems must comply with local building codes and standards. This detail is for general information and guidance only and Dryvit Tremco and USG specifically disclaims any liability for the use of this detail. The project design professional determines, in its sole discretion, whether this detail or a functionally equivalent detail is best suited for the project. This detail is subject to change without notice. Contact Dryvit Tremco and USG to ensure you have the most recent version.

Outsulite® Securock® ExoAir® 430 Panel System



Technical Support: 866-209-2404

Detail: Vertical Panel Joint

File Name:

Drawn by: HDE

Checked by:

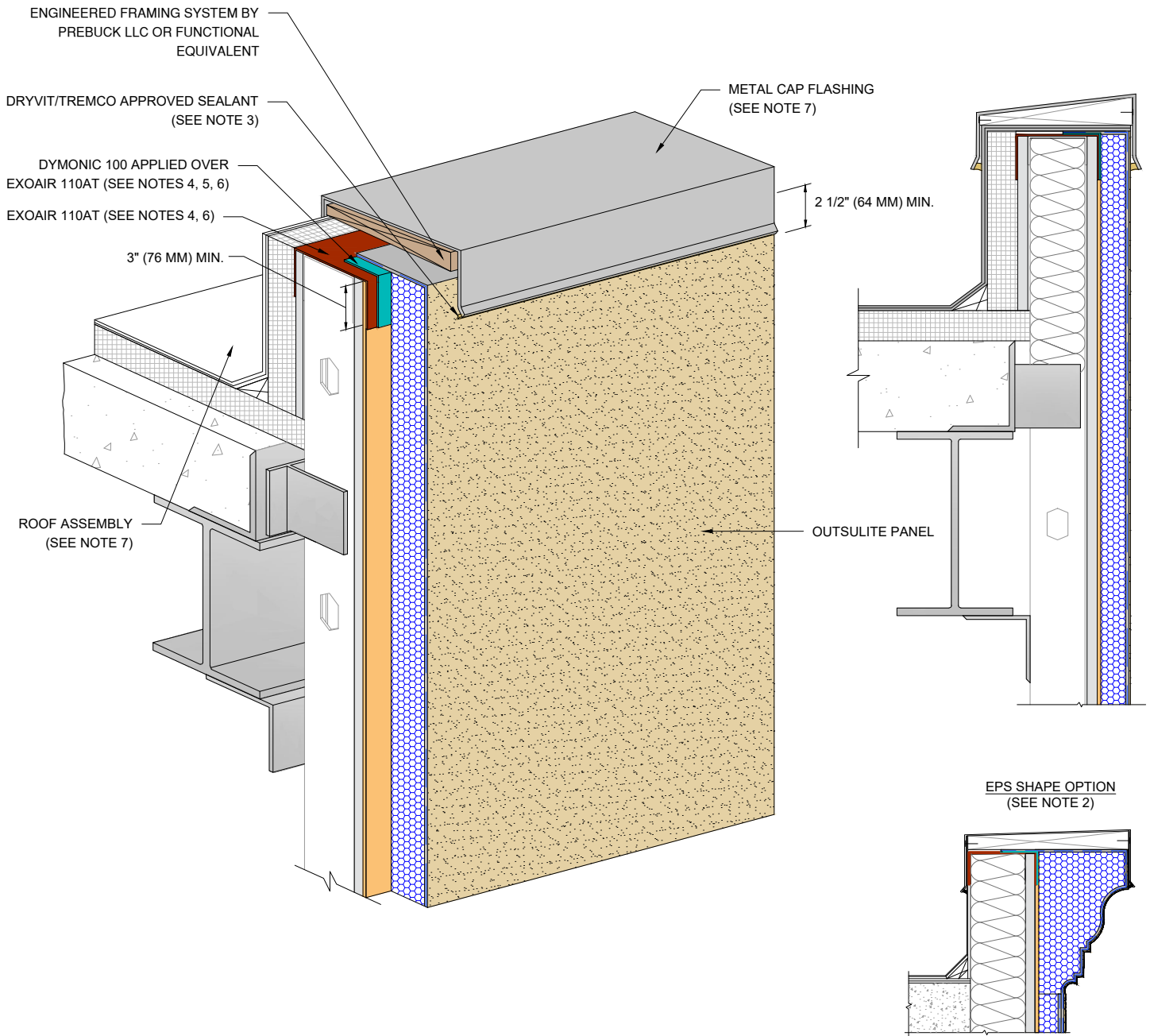
Scale: NTS

Date: 1/9/2023

OSL SE430-12

www.tremcocpg.com





NOTE:

1. ROOF ASSEMBLY, SHEATHING AND CAP FLASHING ARE INSTALLED IN THE FIELD AND NOT COMPONENTS OF THE PANEL SYSTEM.
2. EPS THICKNESS IS DICTATED BY LOCAL CODE AUTHORITY AND APPLICABLE TESTING.
3. REFERENCE DS920 FOR APPROVED SEALANTS.
4. DYMONIC 100 AT 40 MILS MAY BE USED IN LIEU OF EXOAIR 110AT.
5. APPLY DYMONIC 100 AT 40 MILS 1" (25 MM) MIN. ONTO FACE OF SECUROCK EXOAIR 430 PANEL AND 1-5/8" (41 MM) MIN. ONTO OUTSULITE PANEL EDGE.
6. DRYVIT REINFORCED BASE COAT IS NOT TO BE IN DIRECT CONTACT WITH EXOAIR 110AT. APPLY DYMONIC 100 BETWEEN THE MATERIALS.
7. ROOF ASSEMBLY AND CAP FLASHING ARE INSTALLED IN THE FIELD AND NOT COMPONENTS OF THE PANEL SYSTEM.

The architecture, engineering, and design of the project using the Dryvit Tremco and USG products are the responsibility of the project's design professional. All products and systems must comply with local building codes and standards. This detail is for general information and guidance only and Dryvit Tremco and USG specifically disclaims any liability for the use of this detail. The project design professional determines, in its sole discretion, whether this detail or a functionally equivalent detail is best suited for the project. This detail is subject to change without notice. Contact Dryvit Tremco and USG to ensure you have the most recent version.



Dryvit Technical Support: 800-556-7752

Outsulite® Securock® ExoAir® 430 Panel System



Technical Support: 866-209-2404

Detail: Parapet Panel - Metal Coping

File Name:

Drawn by: HDE

Checked by:

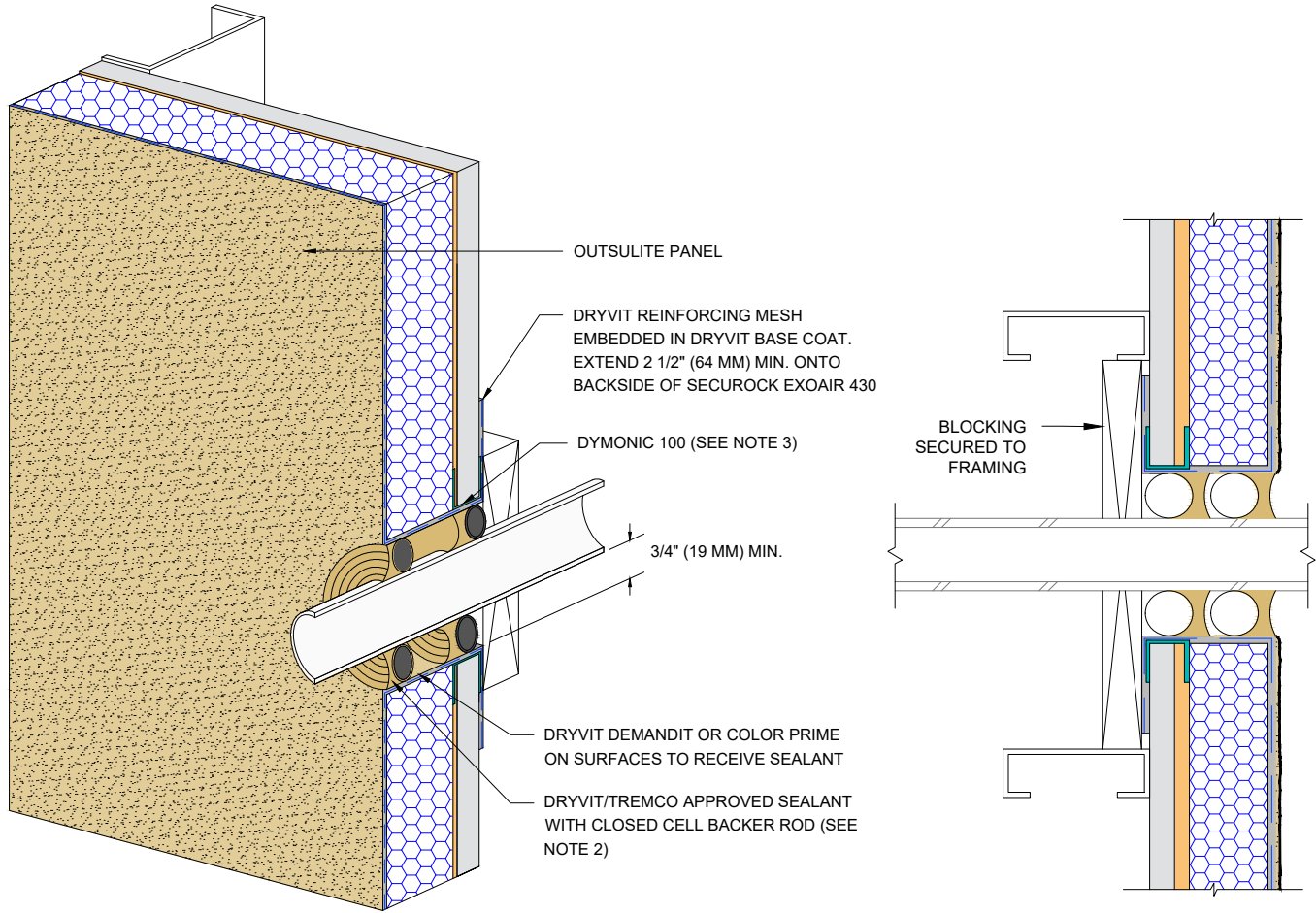
Scale: NTS

Date: 1/9/2023

OSL SE430-13

www.tremcocpg.com





NOTE:

1. DRYVIT RECOMMENDS THAT GROUND FLOOR APPLICATIONS AND ALL FACADES EXPOSED TO ABNORMAL STRESS, HIGH TRAFFIC, OR DELIBERATE IMPACT HAVE THE BASE COAT REINFORCED WITH PANZER® MESH PRIOR TO STANDARD OR STANDARD PLUS MESH. LOCATION OF HIGH IMPACT ZONES SHOULD BE INDICATED ON CONTRACT DRAWINGS.
2. REFERENCE DS920 FOR APPROVED SEALANTS.
3. APPLY DYMONIC 100 AT 40 MILS 1" (25 MM) MIN. ONTO FACE OF SECUROCK EXOAIR 430 PANEL AND 1-5/8" (41 MM) MIN. ONTO OUTSULITE PANEL EDGE.



Dryvit Technical Support: 800-556-7752

The architecture, engineering, and design of the project using the Dryvit Tremco and USG products are the responsibility of the project's design professional. All products and systems must comply with local building codes and standards. This detail is for general information and guidance only and Dryvit Tremco and USG specifically disclaims any liability for the use of this detail. The project design professional determines, in its sole discretion, whether this detail or a functionally equivalent detail is best suited for the project. This detail is subject to change without notice. Contact Dryvit Tremco and USG to ensure you have the most recent version.

Outsulite® Securock® ExoAir® 430 Panel System



Technical Support: 866-209-2404

Detail: Penetrations

Drawn by: HDE

Checked by:

Scale: NTS

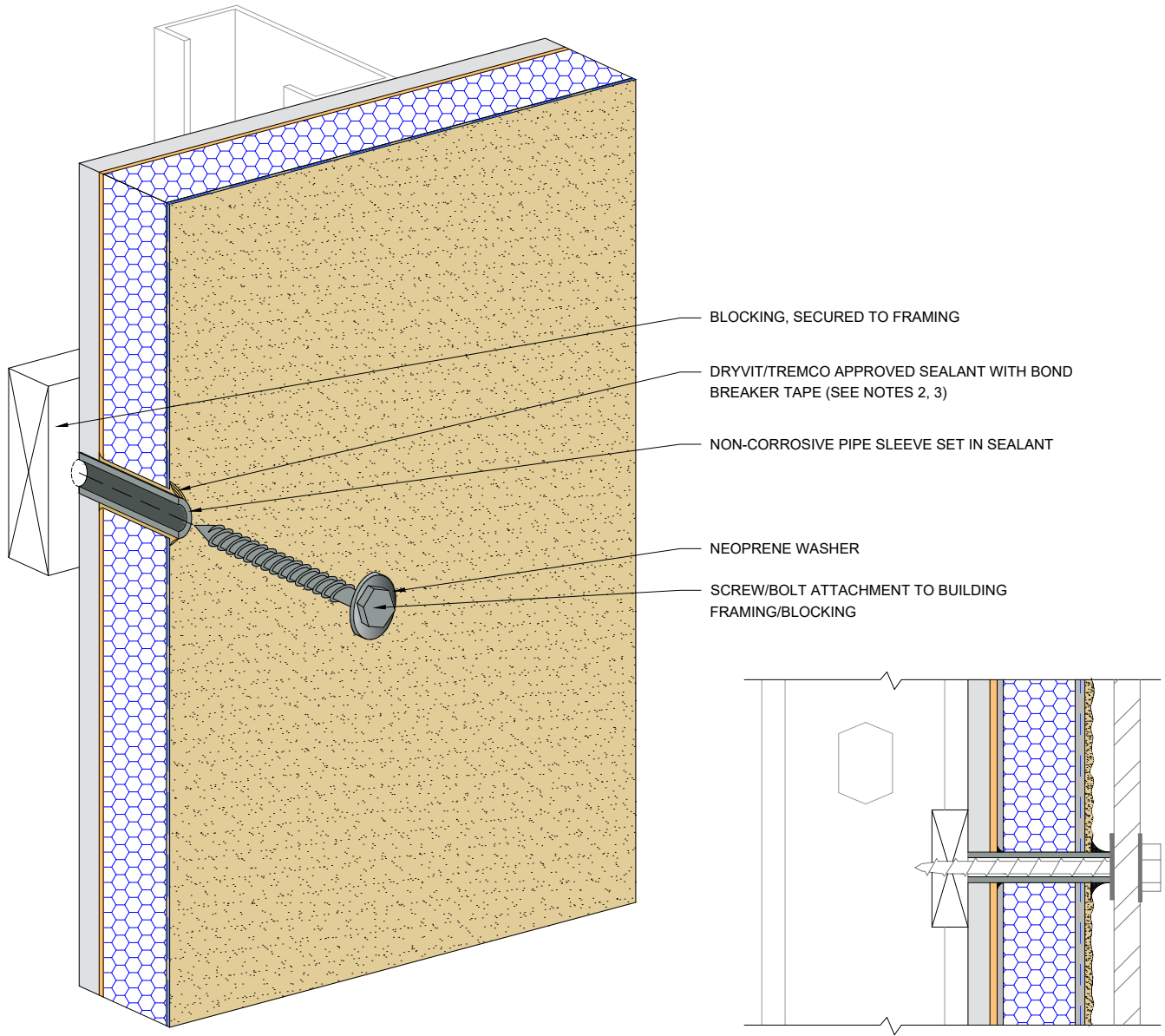
Date: 1/9/2023

File Name:

OSL SE430-14

www.tremcocpg.com





BLOCKING, SECURED TO FRAMING

DRYVIT/TREMCO APPROVED SEALANT WITH BOND BREAKER TAPE (SEE NOTES 2, 3)

NON-CORROSIVE PIPE SLEEVE SET IN SEALANT

NEOPRENE WASHER

SCREW/BOLT ATTACHMENT TO BUILDING FRAMING/BLOCKING

- NOTE:
1. DRYVIT RECOMMENDS THAT GROUND FLOOR APPLICATIONS AND ALL FACADES EXPOSED TO ABNORMAL STRESS, HIGH TRAFFIC, OR DELIBERATE IMPACT HAVE THE BASE COAT REINFORCED WITH PANZER® MESH PRIOR TO STANDARD OR STANDARD PLUS MESH. LOCATION OF HIGH IMPACT ZONES SHOULD BE INDICATED ON CONTRACT DRAWINGS.
 2. REFERENCE DS920 FOR APPROVED SEALANTS.

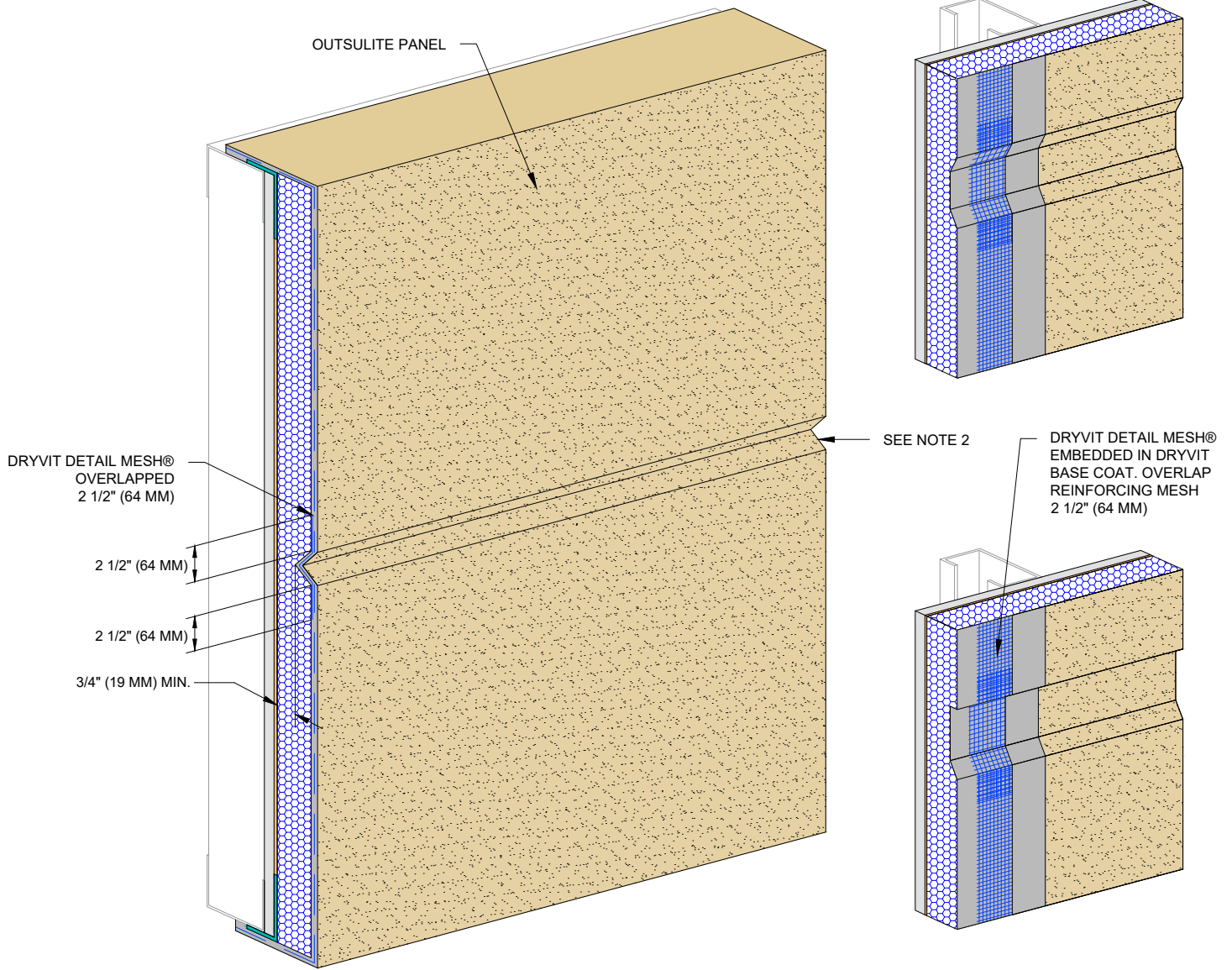
3. APPLY DYMONIC 100 AT 40 MILS 1" (25 MM) MIN. ONTO FACE OF SECUROCK EXOAIR 430 PANEL AND 1-5/8" (41 MM) MIN. ONTO OUTSULITE PANEL EDGE.



The architecture, engineering, and design of the project using the Dryvit Tremco and USG products are the responsibility of the project's design professional. All products and systems must comply with local building codes and standards. This detail is for general information and guidance only and Dryvit Tremco and USG specifically disclaims any liability for the use of this detail. The project design professional determines, in its sole discretion, whether this detail or a functionally equivalent detail is best suited for the project. This detail is subject to change without notice. Contact Dryvit Tremco and USG to ensure you have the most recent version.

Outsulite® Securock® ExoAir® 430 Panel System

<p>SECUROCK® EXOAIR® 430</p> <p>Technical Support: 866-209-2404</p>	Detail: Fastener through System			File Name:	<p>Construction Products Group</p>
	Drawn by: HDE	Checked by:	Scale: NTS	Date: 1/9/2023	
www.tremcocpg.com					



NOTE:

1. DRYVIT RECOMMENDS THAT GROUND FLOOR APPLICATIONS AND ALL FACADES EXPOSED TO ABNORMAL STRESS, HIGH TRAFFIC, OR DELIBERATE IMPACT HAVE THE BASE COAT REINFORCED WITH PANZER® MESH PRIOR TO STANDARD OR STANDARD PLUS MESH. LOCATION OF HIGH IMPACT ZONES SHOULD BE INDICATED ON CONTRACT DRAWINGS.
2. SLOPE BOTTOM EDGE OF REVEAL FOR POSITIVE DRAINAGE.
3. APPLY DYMONIC 100 AT 40 MILS 1" (25 MM) MIN. ONTO FACE OF SECUROCK EXOAIR 430 PANEL AND 1-5/8" (41 MM) MIN. ONTO OUTSULITE PANEL EDGE.



Dryvit Technical Support: 800-556-7752

The architecture, engineering, and design of the project using the Dryvit Tremco and USG products are the responsibility of the project's design professional. All products and systems must comply with local building codes and standards. This detail is for general information and guidance only and Dryvit Tremco and USG specifically disclaims any liability for the use of this detail. The project design professional determines, in its sole discretion, whether this detail or a functionally equivalent detail is best suited for the project. This detail is subject to change without notice. Contact Dryvit Tremco and USG to ensure you have the most recent version.

Outsulite® Securock® ExoAir® 430 Panel System



Detail: Aesthetic Reveals

File Name:

Drawn by: HDE

Checked by:

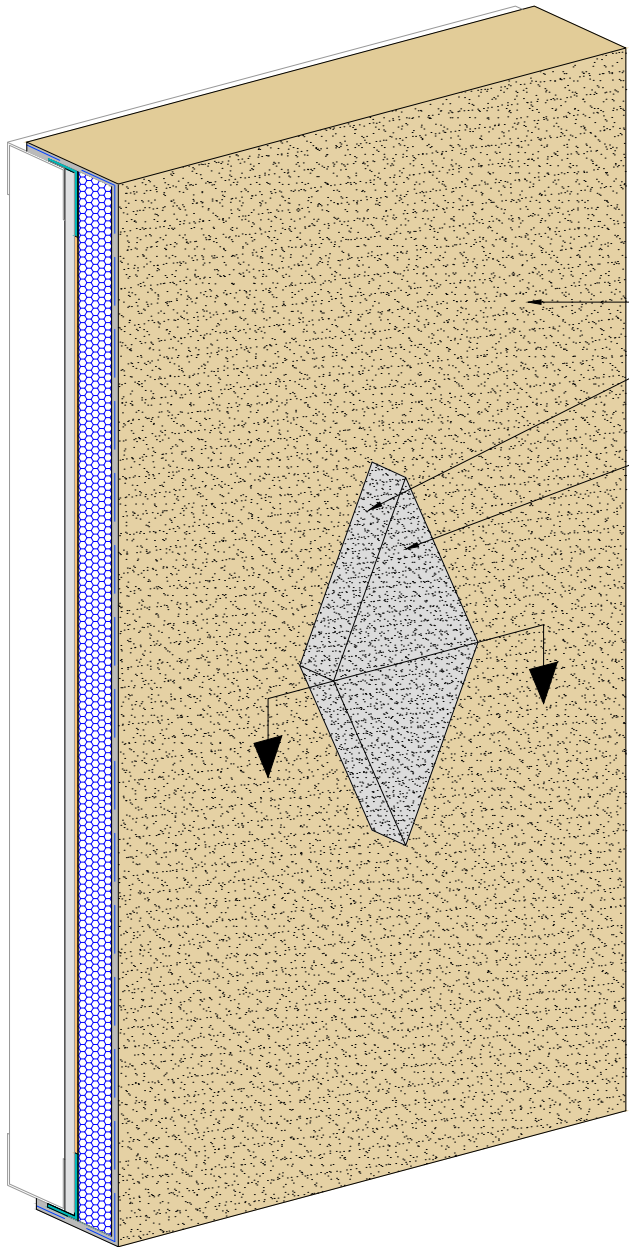
Scale: NTS

Date: 1/9/2023

OSL SE430-16

www.tremcocpg.com



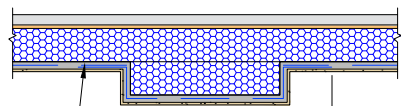


OUTSULITE PANEL

SLOPE SURFACE 6:12 MIN. FOR POSITIVE DRAINAGE. MAXIMUM LENGTH OF SLOPED SURFACE IS 12" (305 MM)

EPS SHAPE MEETING DRYVIT SPECIFICATION DS131 (SEE NOTE 3)

SECTION VIEW



DRYVIT REINFORCING MESH EMBEDDED IN DRYVIT BASE COAT. OVERLAP REINFORCING MESH 2 1/2" (64 MM) MIN.

2 1/2" (64 MM) MIN.

NOTE:

1. DRYVIT RECOMMENDS THAT GROUND FLOOR APPLICATIONS AND ALL FACADES EXPOSED TO ABNORMAL STRESS, HIGH TRAFFIC, OR DELIBERATE IMPACT HAVE THE BASE COAT REINFORCED WITH PANZER® MESH PRIOR TO STANDARD OR STANDARD PLUS MESH. LOCATION OF HIGH IMPACT ZONES SHOULD BE INDICATED ON CONTRACT DRAWINGS.

2. APPLY DYMONIC 100 AT 40 MILS 1" (25 MM) MIN. ONTO FACE OF SECUROCK EXOAIR 430 PANEL AND 1-5/8" (41 MM) MIN. ONTO OUTSULITE PANEL EDGE.
3. EPS THICKNESS IS DICTATED BY LOCAL CODE AUTHORITY AND APPLICABLE TESTING.

The architecture, engineering, and design of the project using the Dryvit Tremco and USG products are the responsibility of the project's design professional. All products and systems must comply with local building codes and standards. This detail is for general information and guidance only and Dryvit Tremco and USG specifically disclaims any liability for the use of this detail. The project design professional determines, in its sole discretion, whether this detail or a functionally equivalent detail is best suited for the project. This detail is subject to change without notice. Contact Dryvit Tremco and USG to ensure you have the most recent version.



Dryvit Technical Support: 800-556-7752

Outsulite® Securock® ExoAir® 430 Panel System

USG | **TREMCO**

SECUROCK® EXOAIR® 430

Technical Support: 866-209-2404

Detail: EPS Shapes				File Name:
Drawn by: HDE	Checked by:	Scale: NTS	Date: 1/18/2023	OSL SE430-17
www.tremcocpg.com				

