

FEDDERLITE® MP



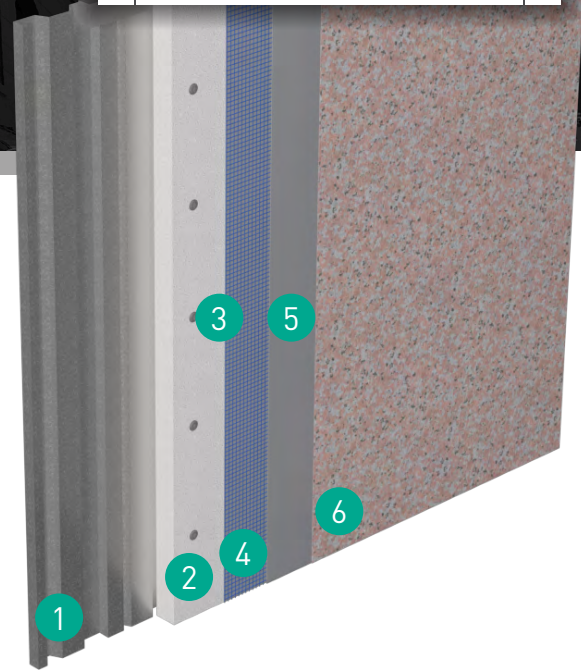
Prefabricated Panelization System Installed over a Proprietary Light-Gauge Metal Pan

Product Overview

Fedderlite® MP is a prefabricated panel system utilizing a Dryvit Outsulation® system over a specially designed, proprietary light-gauge metal pan.

Fedderlite MP is ideally suited for pre-engineered metal buildings, warehouses and manufacturing facilities, in addition to mechanical screens and retrofit construction applications.

The pan and panel system are mechanically fastened.



Features & Benefits

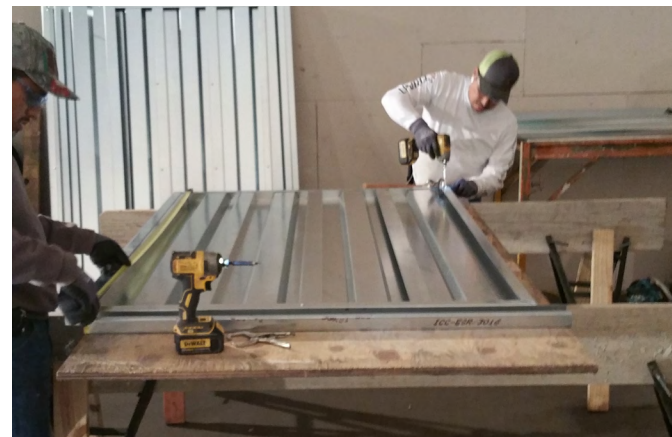
- Outsulation system over a specially-designed, light-gauge metal frame and proprietary metal pan
- Lightweight, at approximately only 4.5 lb/ft²
- Ideal for pre-engineered metal buildings, screen walls, and over irregular surfaces
- Proprietary, industry-unique system

System Components

1	Fedderlite MP Decking
2	Expanded Polystyrene (EPS)
3	Mechanical Fasteners
4	Reinforcing Mesh (<i>Embedded in Base Coat</i>)
5	Base Coat
6	Finish Coat (<i>Shown: Ameristone™. See pg. 8</i>)



Fedderlite MP restoration over split-faced block



Fedderlite MP roof screen in fabrication

Why Build with Modulite Prefabricated Panels?

Speed construction or restoration. Simplify installation. Extend the construction season. A structure built with Modulite prefabricated panels means more for everyone – more satisfied contractors, more comfortable occupants or tenants, and more efficient structures and cost-effective operation for owners.



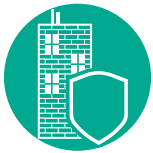
Faster Construction Time

In-plant fabrication can reduce production time, and speed up field application of exterior cladding systems, to reduce construction schedules.



Any Look You Want

A wide range of colors and finishes like brick, granite, metals, stucco and more provide maximum flexibility in your façade aesthetic.



Stronger and More Resilient

Our systems are designed for maximum durability, many with service lives far surpassing that of competing systems.



Avoid Labor Shortage Problems

Pre-fabricated Dryvit panels can help address ongoing shortages in the skilled labor force – while simultaneously maximizing quality control.



Cost-Effective for the Long Term

A broad range of products can fit most project budgets – but our energy-efficiency and maintenance solutions can also help you ensure cost-effective ownership and operation for the long term.



Better Insulated

Industry-leading Outsulation® continuous insulation means efficient construction and operation, and will exceed strict energy codes for insulation.



One Point of Contact

Our products and systems are backed by industry-leading warranties – all from a single point of contact. We can also help with everything from asset management to diagnostics to installer training.



Leading Edge Sustainability

Our building solutions help you reduce waste, and meet green building standards like Net Zero, Living Building Challenge, Passive House and more.

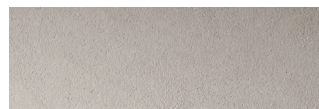
DRYVIT® FINISH OPTIONS | Choose from unlimited color and finish combinations!



AMERISTONE™



FERROS™



LYMESTONE™



QUARZPUTZ®



STONE MIST



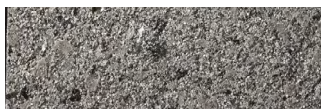
REFLECTIT™ TEXTURE



CUSTOM BRICK™



SANDPEBBLE™



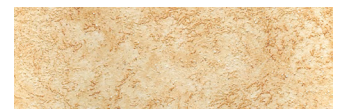
TERRANEO®



REFLECTIT™ SMOOTH



WOODGRAIN



TUSCAN GLAZE™

Tremco CPG Inc. | 3735 Green Road | Beacwood, OH 44122 | 401.822.4100 | dryvit.com

Tremco Construction Products Group (CPG) brings together Tremco CPG Inc. and its Dryvit and Nudura brands; Willseal; Prebuck LLC; Tremco Barrier Solutions, Inc.; Weatherproofing Technologies, Inc. and its Pure Air Control Services and Canam Building Envelope Specialists offerings; and Weatherproofing Technologies Canada, Inc.



Construction Products Group

Use of the ® symbol indicates registration with the US Patent & Trademark Office and the Canadian Intellectual Property Office.