



MODULITE™ PREFABRICATED PANEL SYSTEMS

Prefabricated Panelization Systems with Dryvit Outsulation® and Beautiful Aesthetic Finish Options to Meet Any Design Need



MODULITE™
Prefabricated Solutions

 **Dryvit**

Get Complete Control Over Schedules and Quality with Modulite Panelized Wall Systems from Dryvit

Whether you're building new or renovating, Modulite prefabricated panel systems offer unique advantages over traditional field-applied construction.

Since 1970, Dryvit has offered systems and technical support for the prefabrication space using all of the Dryvit products. Modulite panelization systems incorporate all the benefits of a Dryvit Outsulation® system — including continuous insulation (CI) and beautiful aesthetic finish options to meet any design need — all fully-tested to meet existing building codes and provide extraordinary energy efficiency. Modulite panelization systems also offer the most experienced and deepest team of partner fabricators in the industry.

Why Build with Modulite Prefabricated Panels?

Speed construction or restoration. Simplify installation. Extend the construction season. A structure built with Modulite prefabricated panels means more for everyone — more satisfied contractors, more comfortable occupants or tenants, and more efficient structures and cost-effective operation for owners.



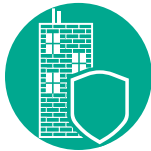
Faster Construction Time

In-plant fabrication can reduce production time, and speed up field application of exterior cladding systems, to reduce construction schedules.



Any Look You Want

A wide range of colors and finishes like brick, granite, metals, stucco and more provide maximum flexibility in your façade aesthetic.



Stronger and More Resilient

Our systems are designed for maximum durability, many with service lives far surpassing that of competing systems.



Avoid Labor Shortage Problems

Pre-fabricated Dryvit panels can help address ongoing shortages in the skilled labor force — while simultaneously maximizing quality control.



Cost-Effective for the Long Term

A broad range of products can fit most project budgets — but our energy-efficiency and maintenance solutions can also help you ensure cost-effective ownership and operation for the long term.



Better Insulated

Industry-leading Outsulation® continuous insulation means efficient construction and operation, and will exceed strict energy codes for insulation.



One Point of Contact

Our products and systems are backed by industry-leading warranties — all from a single point of contact. We can also help with everything from asset management to diagnostics to installer training.



Leading Edge Sustainability

Our building solutions help you reduce waste, and meet green building standards like Net Zero, Living Building Challenge, Passive House and more.

PANELIZATION SELECTION GUIDE

APPLICATIONS & PROPERTIES

SYSTEM:	Fedderlite®	Fedderlite® M	Fedderlite® MP	Outsulate®	Outsulate® Securlock® Exohair® 430
APPLICATION / PROPERTY					
Use in New Construction	•	•	•	•	•
Use in Retrofit / Renovation	•	•	•	•	•
Weight (lb/ft ² , approximate)	2.5	2.5	4.5	8.0	9.0
Proprietary System	•	•	•		
Provides Structural Support				•	•
Attachment: Adhered	•				
Attachment: Mechanical		•	•	•	•
Can Be Applied to Irregular Surfaces			•		
10-Year Warranty Available ¹	•	•	•	•	•
20-Year Warranty Available ²					•

TEST RESULTS

TEST	TEST METHOD	CRITERIA	RESULTS
Accelerated Weathering	ASTM G 155 Cycle 1	No deleterious effects after 2000 hours	No deleterious effects after 5000 hours
Full Scale Multi-Story Fire Test ³	UBC Std. 26-4	Resist flame propagation over the exterior surface	Passed
Intermediate Multi-Story Fire Test ⁴	NFPA 285 (UBC 26-9)	Flame Spread < 25, Smoke Developed < 450	Passed with wood and steel framing
Surface Burning Characteristics	ASTM E 84		Passed
Thermal Resistance	ASTM C 177, C 518		Passed

¹ Visit dryvit.com for more details on warranty terms

² With Tremco Spectrem silicone sealants as the joint treatments

³ Outsulate and Fedderlite

⁴ Outsulate and Fedderlite

FEDDERLITE® / FEDDERLITE® M

Prefabricated Exterior Wall Insulation and Finish Systems for Use over Solid Substrates

Product Overview

Fedderlite® is a lightweight panel system for use in new construction or retrofit over solid substrates.

This panel utilizes a unique process for embedding reinforcing channels into the continuous insulation to provide a means for handling, as well as mechanical attachment to the wall.

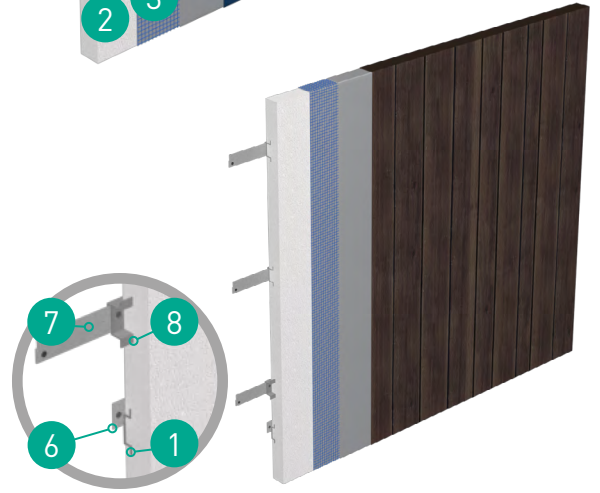
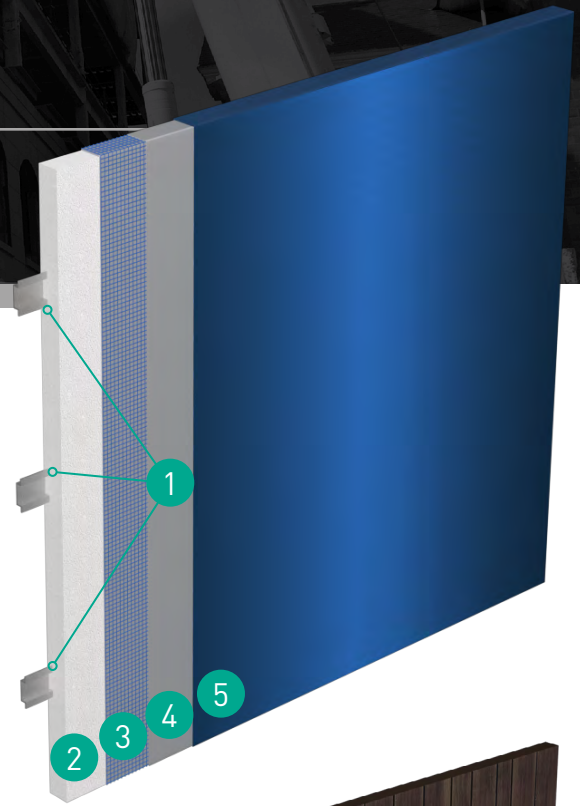
Fedderlite panels may be adhered or mechanically fastened to approved substrates.

Features & Benefits

- Ultra-Lightweight (approximately 2.5 lb/ft²) construction for easier handling and on-site installation
- Panels must be attached to a smooth, solid substrate for streamlined installation
- Unique, embedded reinforcing channels provide strength and enhanced handling
- Mechanically attached *Fedderlite M* allows for cold weather installs, eliminates adhesive mixing, and helps reduce in-field installation labor



Sandpebble fine finish, in a custom color



System Components

1	Fedderlite Channels
2	Expanded Polystyrene (EPS)
3	Reinforcing Mesh (<i>Embedded in Base Coat</i>)
4	Base Coat
5	Finish Coat (<i>Shown: Reflectit™ Smooth. See pg. 8</i>)
6	Mounting Plate (<i>Optional</i>)
7	Mounting Rail (<i>Fedderlite M Only</i>)
8	Fedderlite M Channel (<i>Fedderlite M Only</i>)

FEDDERLITE® MP

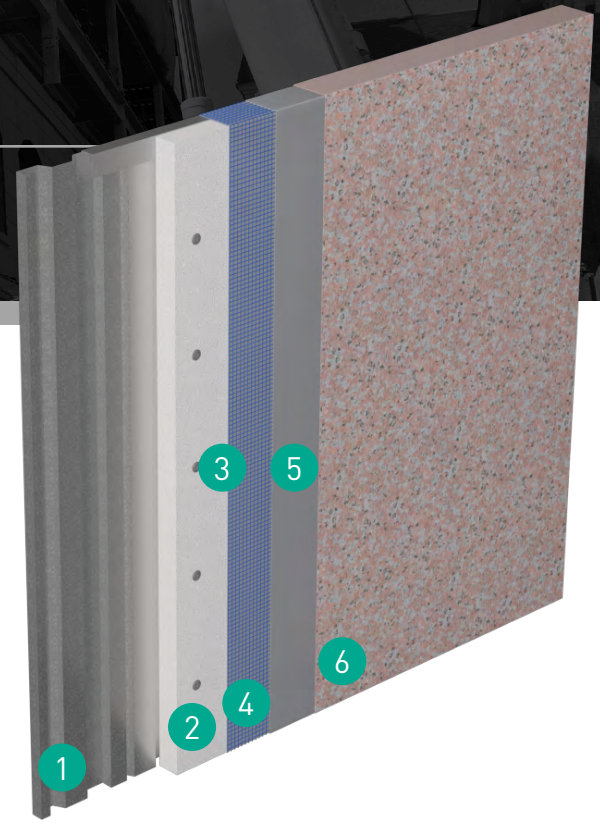
Prefabricated Panelization System Installed over a Proprietary Light-Gauge Metal Pan

Product Overview

Fedderlite® MP is a prefabricated panel system utilizing a Dryvit Outsulation® system over a specially designed, proprietary light-gauge metal pan.

Fedderlite MP is ideally suited for pre-engineered metal buildings, warehouses and manufacturing facilities, in addition to mechanical screens and retrofit construction applications.

The pan and panel system are mechanically fastened.



Features & Benefits

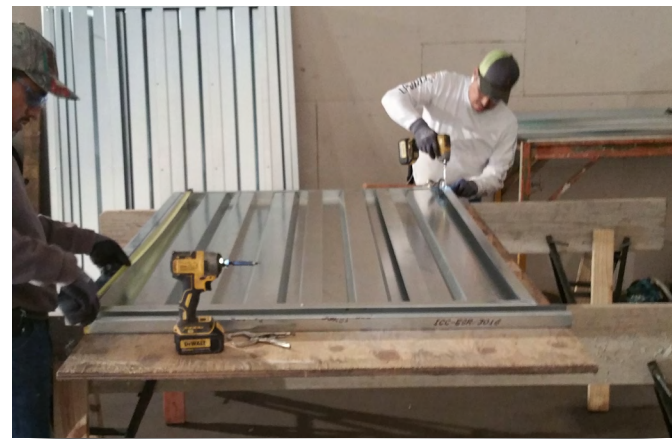
- Outsulation system over a specially-designed, light-gauge metal frame and proprietary metal pan
- Lightweight, at approximately only 4.5 lb/ft²
- Ideal for pre-engineered metal buildings, screen walls, and over irregular surfaces
- Proprietary, industry-unique system



Fedderlite MP restoration over split-faced block

System Components

1	Fedderlite MP Decking
2	Expanded Polystyrene (EPS)
3	Mechanical Fasteners
4	Reinforcing Mesh (<i>Embedded in Base Coat</i>)
5	Base Coat
6	Finish Coat (<i>Shown: Ameristone™. See pg. 8</i>)



Fedderlite MP roof screen in fabrication

OUTSULITE® / OUTSULITE® SECUROCK® EXOAIR® 430

Industry-Leading Panel Systems with Dryvit
Outsulation and an Air/Water-Resistive Barrier

Product Overview

The most versatile Modulite panel system, Outsulite® provides the strength and ability to configure to any panel shape, and are designed in accordance with current AISI Standards and manufacturer load tables. Deflections are limited to L/240. Stud, sheathing and building connections are engineered by panel fabricators to conform with building code design load requirements.

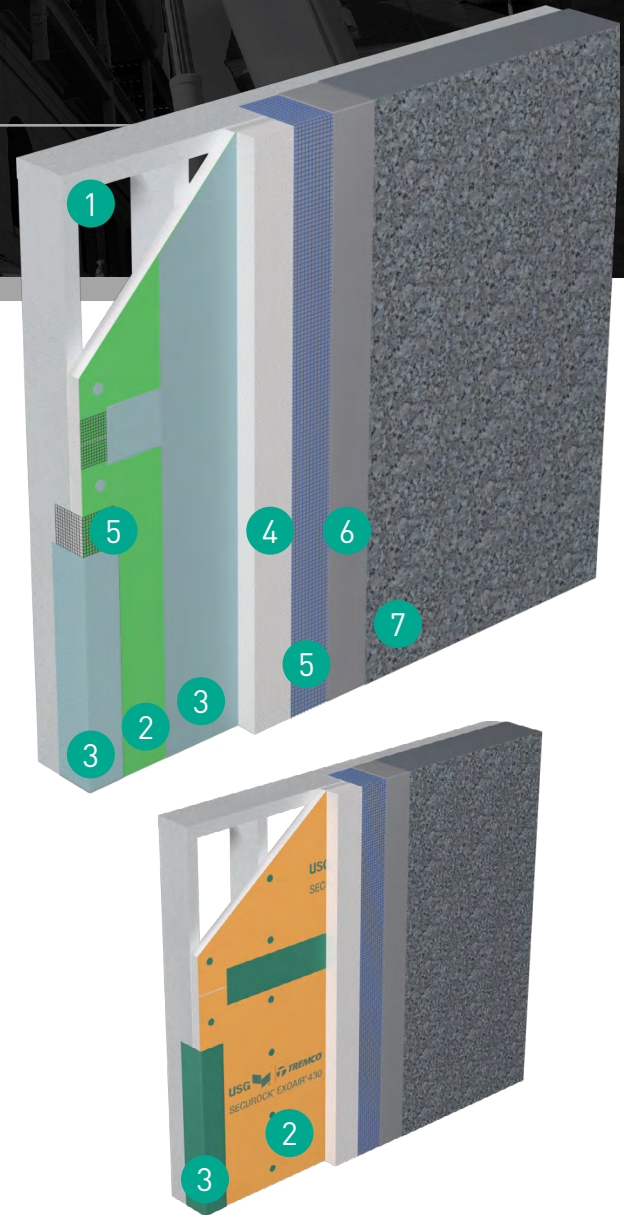
At approximately 8 lb/ft², Outsulite panels are a lightweight alternative to conventional systems, providing a single structural system for supporting the exterior cladding, window systems and other accessories.

Features & Benefits

- Maximum insulation in a single structural system for supporting cladding, window systems and more
- Perfect for tight job sites
- Single structural system for supporting cladding, fenestration systems and more
- Controlled factory application of *Securock® ExoAir® 430* ensures proper mil thickness and uniformity



Outsulite panel installation



System Components

1	Light-Gauge Steel Framing
2	Acceptable Sheathing / Securock ExoAir 430 Air/Water-Resistive Barrier
3	Backstop® Air/Water-Resistive Barrier / Dymonic® 100 Detailing Sealant
4	Expanded Polystyrene (EPS) w/ Dryvit Adhesive
5	Reinforcing Mesh (<i>Embedded in Base Coat</i>)
6	Base Coat
7	Finish Coat (<i>Shown: TerraNeo®. See pg. 8</i>)



The Industry's Premier National Partner Fabricator Network

Not only is Dryvit the most experienced EIFS manufacturer, we've also been at the forefront of the EIFS panelization business since the early 1970s. Our innovative products, Modulite panel systems and Partner Fabricator Network continues to grow everyday.

The Dryvit Partner Fabricator Network is capable of assisting you anywhere in the United States.

For info on the fabricator nearest you, contact our panelization team at 1-800-556-7752, ext. 9.

Now part of the Tremco Construction Products Group

Dryvit is now part of the Tremco Construction Products Group (CPG). Tremco Construction Products Group (CPG) brings together the Commercial Sealants & Waterproofing and Roofing & Building Maintenance divisions of Tremco CPG Inc.; Dryvit and Willseal brands; Nudura Inc.; Prebuck LLC; Tremco Barrier Solutions, Inc.; Weatherproofing Technologies, Inc.; Weatherproofing Technologies Canada, Inc.; and Pure Air Control Services, Inc.

Products from across the Tremco CPG companies' lines are designed for maximum waterproofing, thermal, sound, and air-tightness, and systems are rigorously tested for performance and compatibility at our one-of-a-kind building science laboratory.

Look to Tremco CPG for:

- Dryvit and Tremco Flashing, and Air and Vapor Barrier Systems
- Willseal Pre-Compressed Foam Expansion Joint Products
- Tremco Sealants, Adhesives and Transition Assemblies
- Nudura Insulated Concrete Form (ICF) Systems





FINISH & COLOR OPTIONS

We all want our buildings to stand out and be noticed. That's why Dryvit manufactures a wide array of finishes that replicate everything from brick, to stone, to granite, to metal panels and more. Use them alone or in any combination to create the exact exterior you want, at a fraction of the weight — and cost — of the traditional materials.

And, when you factor in the enormous palette of color and detail options for each finish, your design options are all but limitless.

DRYVIT® FINISH OPTIONS | *Choose from unlimited color and finish combinations!*



AMERISTONE™



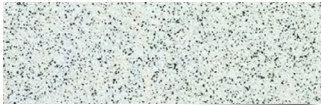
FERROS™



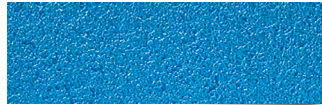
LYMESTONE™



QUARZPUTZ®



STONE MIST



REFLECTIT™ TEXTURE



CUSTOM BRICK™



SANDPEBBLE™



TERRANEO®



REFLECTIT™ SMOOTH



WOODGRAIN



TUSCAN GLAZE™



Part of Tremco Construction Products Group

Tremco CPG Inc. | 3735 Green Road | Beacwood, OH 44122 | 401.822.4100 | dryvit.com

Tremco Construction Products Group (CPG) brings together Tremco CPG Inc. and its Dryvit and Nudura brands; Willseal; Prebuck LLC; Tremco Barrier Solutions, Inc.; Weatherproofing Technologies, Inc. and its Pure Air Control Services and Canam Building Envelope Specialists offerings; and Weatherproofing Technologies Canada, Inc.



Construction Products Group

Use of the ® symbol indicates registration with the US Patent & Trademark Office and the Canadian Intellectual Property Office.

tremcocpg.com