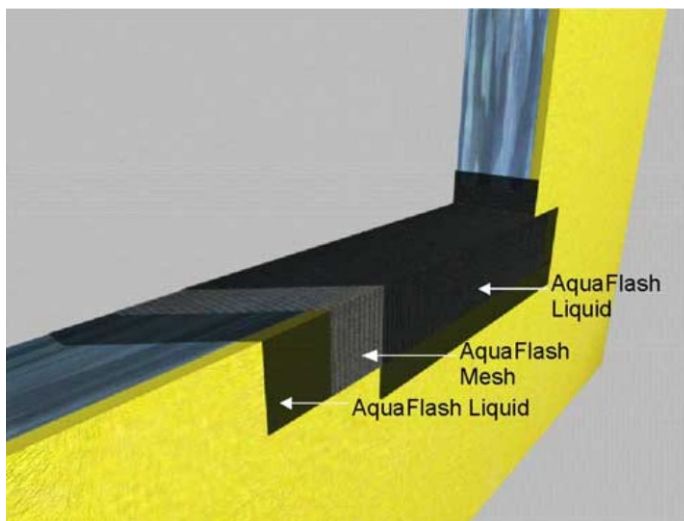


1. GENERAL

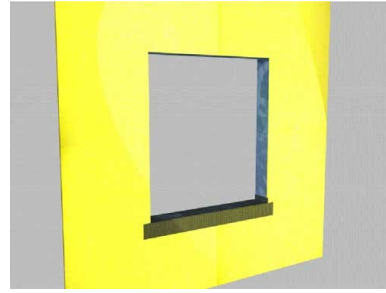
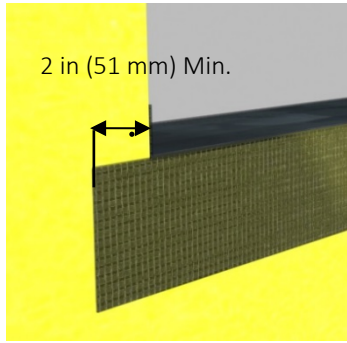
- A. This document provides guidelines for the application and use of the Dryvit AquaFlash System at rough openings for windows, doors and other penetrations, as well as across substrate changes, floor lines and other movement joints. Use of AquaFlash System provides an effective water resistant, membrane flashing system for exterior walls when used in conjunction with Dryvit's Backstop® NT™ and exterior insulation and finish systems. The two-component system consisting of AquaFlash Liquid and AquaFlash Mesh is fully compatible with and may be applied either before or after installation of the Backstop NT water-resistive barrier used over the face of the wall. It is important that proper procedures and building code requirements for design and installation of flashings be followed to ensure a durable, long-term installation.



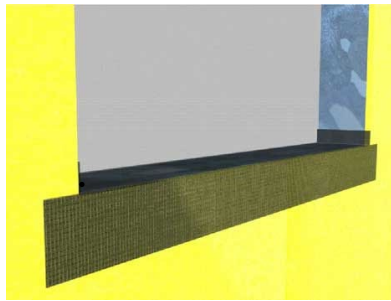
AquaFlash Liquid is applied to the substrate surface, AquaFlash Mesh is laid into it and additional AquaFlash Liquid applied over it.

2. INSTALLATION AT WINDOW, DOOR AND OTHER ROUGH OPENINGS

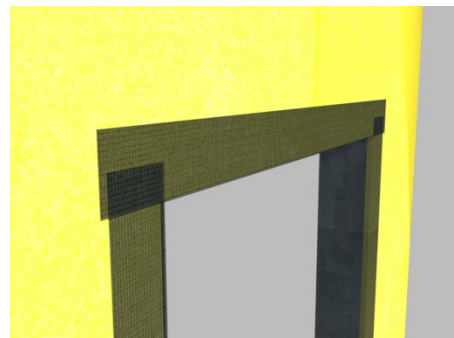
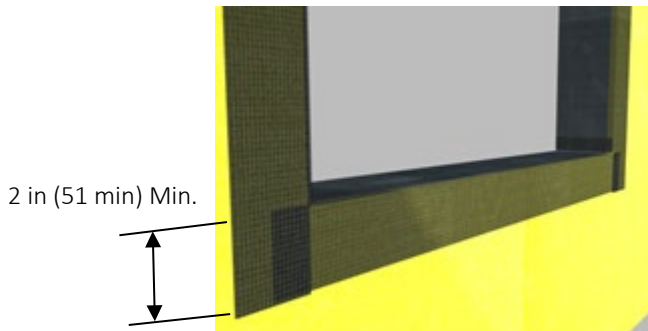
- A. The AquaFlash System can be used to provide additional water protection for the framing and sheathing at rough openings of windows, doors and other penetrations. The materials may be applied before or after the Backstop NT application on the wall surface.
1. For rough opening preparation, the first step is to clean the surfaces to which the AquaFlash Liquid will be applied. All surfaces must be free of dust, dirt, oils or other contaminants that may interfere with adhesion.
 2. Measure the sill width, jambs and head, and cut the AquaFlash Mesh to the proper lengths so that it extends a minimum of 2 in (51 mm) beyond the window nailing flange (if any). This allows for proper overlap with the Backstop NT on the field of the wall.
 3. Using a brush or 3/4 in (19 mm) nap roller, apply a liberal coat of AquaFlash Liquid to the substrate surface. AquaFlash System must be applied so that it extends onto the substrate and also covers the entire rough opening to the interior face of the wall.



4. Immediately lay the AquaFlash Mesh into the AquaFlash Liquid and brush smooth, adding additional material to completely embed the mesh.
5. Install the jamb pieces of AquaFlash Mesh and AquaFlash Liquid in the same manner overlapping onto the sill material minimum 2 in (51 mm).
6. Install the head piece of AquaFlash Mesh and AquaFlash Liquid and overlap onto the jamb pieces minimum 2 in (51 mm).
 - a. As an alternative, preformed Dryvit AquaFlash Corners can be applied at each corner of the opening to reduce the number of field cuts required. The AquaFlash Corners are installed in the same manner as the AquaFlash Mesh.

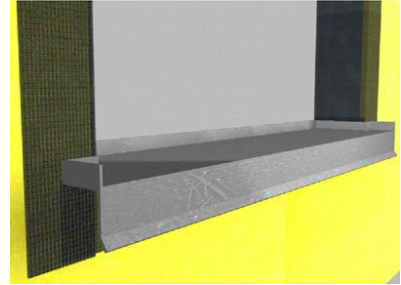
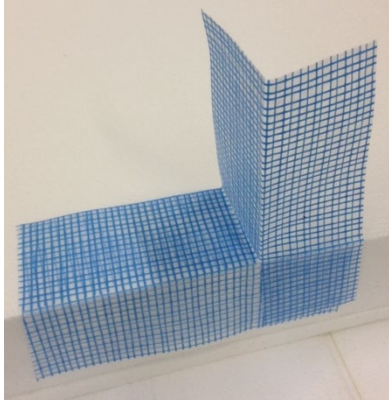


Extend AquaFlash System to interior of wall



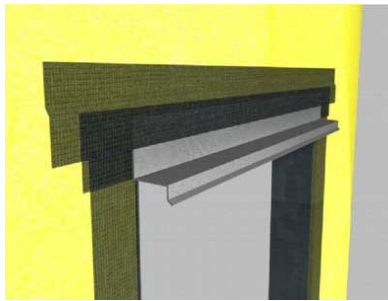
Overlap AquaFlash Mesh at least 2 in (51 mm)

7. Install diagonal "butterflies" of AquaFlash Liquid and AquaFlash Mesh at each sill-jamb corner.
NOTE: This requirement pertains to preformed corners as well.
8. Allow to set for minimum 15 minutes and follow with a second liberal coat of AquaFlash Liquid and smooth out to ensure a continuous film free of voids, pinholes or other discontinuities.
9. After the AquaFlash System materials have dried, the window and associated flashings may be installed in accordance with the window manufacturer's installation instructions.

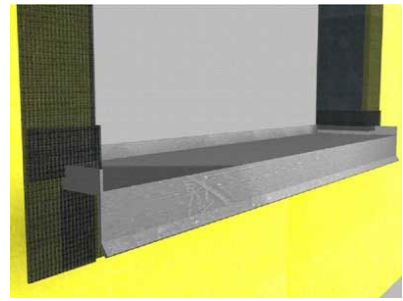


3. INSTALLATION OVER METAL AND PVC FLASHING MATERIALS

- A. AquaFlash System may be installed directly over galvanized or painted metal and PVC flashing materials to provide the proper shedding of water.
1. The rough opening should be prepared with AquaFlash System as described above.
 2. Install associated flashing material to the opening or face of the wall as necessary using appropriate corrosion resistant fasteners.
 3. Clean the surface of the flashing as to be free of dirt, dust, oils or other contaminants that may interfere with adhesion.
 4. For PVC products, the surface should be cleaned and lightly abraded to break the surface skin and provide some “tooth” for the coating. Due to the inherent variation of PVC materials, a test area is always recommended.
 5. Measure the length of the flashing and cut the AquaFlash Mesh to the proper length so that it extends minimum 2 in (51 mm) beyond each end. This allows for proper overlap with the Backstop NT on the field of the wall.
 6. Using a brush or 3/4 in (19 mm) nap roller, apply a liberal coat of AquaFlash Liquid to the flashing and adjacent wall surface.
 7. Immediately lay the AquaFlash Mesh into the AquaFlash Liquid and brush smooth, adding additional material to completely embed the mesh.
 8. Allow to set for minimum 15 minutes and follow with a second liberal coat of AquaFlash Liquid and smooth out to ensure a continuous film free of voids, pinholes or other discontinuities and allow to dry



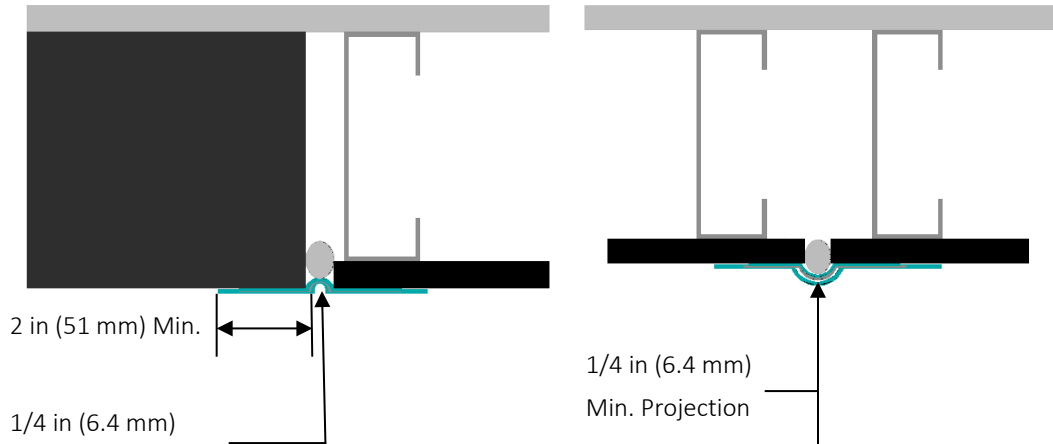
Overlap AquaFlash System over flashing leg minimum 2 in (51 mm)



Apply AquaFlash System over vertical flashing legs

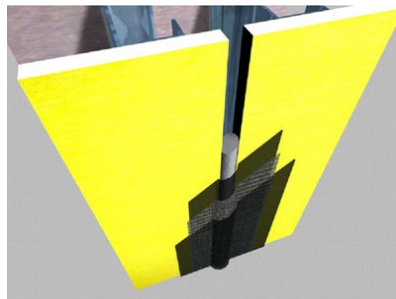
4. INSTALLATION ACROSS SUBSTRATE EXPANSION JOINTS

- A. AquaFlash System may also be installed across movement joints at changes in substrate and floor lines to provide a continuous water-resistant barrier that becomes integral with the Backstop NT applied to the face of the wall. In order to accommodate expansion and contraction movements, the AquaFlash System must be installed as follows. This procedure will accommodate a maximum of 1/4 in (6.4 mm) of expansion or contraction movement.

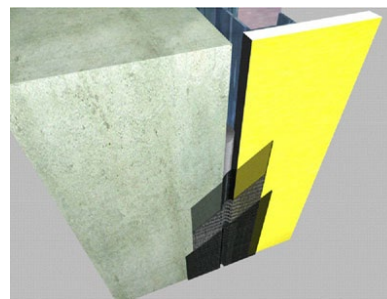


1. Clean the surfaces to which the AquaFlash materials will be applied. All surfaces must be free of dust, dirt, oils or other contaminants that may interfere with adhesion. The width of the AquaFlash Mesh must be such that it overlaps a minimum of 2 in (51 mm) to each side of the joint.

2. Clean the joint to allow for installation of a backer material.
3. Install in the joint a non-gassing, closed cell polyethylene backer rod, sized minimum 50% larger than the joint width. Install the backer rod so that the surface is either recessed or projecting minimum 1/4 in (6.4 mm) from the surface of the wall.
4. Measure and cut the AquaFlash Mesh to a workable length.
5. Using a brush or 3/4 in (19 mm) nap roller, apply a liberal coat of AquaFlash Liquid over the backer rod and minimum 2 in (51 mm) along the adjacent wall surface.
6. Immediately lay the AquaFlash Mesh into the wet material and brush smooth, adding additional material to completely embed the mesh.
7. Allow to set for minimum 15 minutes and follow with a second liberal coat of AquaFlash Liquid and smooth out to ensure a continuous film free of voids, pinholes or other discontinuities.
8. Allow to dry prior to proceeding with application of Backstop NT and installation of Dryvit EIF system.



Projecting backer rod



Recessed backer rod

Information contained in this product sheet conforms to the standard detail recommendations and specifications for the installation of Dryvit products as of the date of publication of this document and is presented in good faith. Dryvit assumes no liability, expressed or implied, as to the architecture, engineering or workmanship of any project. To ensure that you are using the latest, most complete information, contact Dryvit.

For more information on Dryvit or Continuous Insulation, [click here](#).

Printed in USA. Issued 1.7.2022
©Dryvit. 2022

0122/DS196

Tremco Construction Products Group (CPG) brings together the Commercial Sealants & Waterproofing and Roofing & Building Maintenance divisions of Tremco CPG Inc.; Dryvit and Willseal brands; Nudura Inc.; Prebuck LLC; Tremco Barrier Solutions, Inc.; Weatherproofing Technologies, Inc.; Weatherproofing Technologies Canada, Inc.; and Pure Air Control Services, Inc.



dryvit.com | 800.556.7752



Construction Products Group

3735 Green Rd. | Beachwood, OH 44122
800.321.7906 | tremcocpg.com