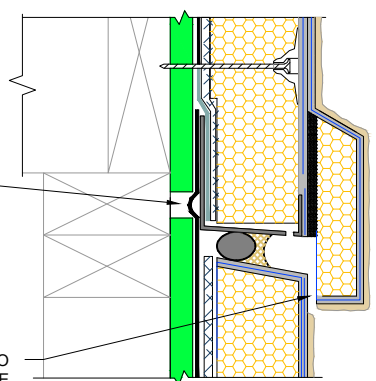


**DRAINAGE TRACK OPTION
(SEE NOTE 5, 6)**



NOTE:

1. DRYVIT RECOMMENDS THAT GROUND FLOOR APPLICATIONS AND ALL FACADES EXPOSED TO ABNORMAL STRESS, HIGH TRAFFIC, OR DELIBERATE IMPACT HAVE THE BASE COAT REINFORCED WITH PANZER® MESH PRIOR TO STANDARD OR STANDARD PLUS MESH. LOCATION OF HIGH IMPACT ZONES SHOULD BE INDICATED ON CONTRACT DRAWINGS.
2. FOR WOOD FRAMED CONSTRUCTION: EXPANSION JOINT IS INTENDED TO ACCOMMODATE CROSS GRAIN SHRINKAGE FOR FLOOR BEAMS. LOCATE EXTERNAL SEALANT JOINT APPROXIMATELY 1" (25 MM) BELOW SHEATHING GAP.
3. DRYVIT GENESIS® OR GENESIS DM BASE COAT IS REQUIRED FOR MECHANICALLY FASTENED SYSTEMS 1-3.
4. FASTENERS ARE NOT REQUIRED FOR SYSTEMS 4 OR 5.
5. LIGHTLY SAND SURFACE OF DRAINAGE TRACK TO MAXIMIZE ADHESION.
6. IF PROJECT IS DEFINED AS NON-COMBUSTIBLE, DRAINAGE TRACK USAGE IS LIMITED TO THE BASE OF THE SYSTEM AT FINISHED GRADE LEVEL.
7. REFER TO PRODUCT DATA SHEETS FOR SPECIFIC APPLICATION METHODS.
8. BACKSTOP® FLASH AND FILL MAY ONLY BE USED WITH BACKSTOP® NTX™ AWRB.

LEAVE MIN. 1/8" (3MM) GAP TO ALLOW FOR DRAINAGE

The architecture, engineering, and design of the project using the Dryvit and Tremco products are the responsibility of the project's design professional. All products and systems must comply with local building codes and standards. This detail is for general information and guidance only and Dryvit and Tremco specifically disclaims any liability for the use of this detail. The project design professional determines, in its sole discretion, whether this detail or a functionally equivalent detail is best suited for the project. This detail is subject to change without notice. Contact Dryvit and Tremco to ensure you have the most recent version.

Outsulation® RMD System™



Detail: Concealed Floor Line Expansion Joint				File Name:
Drawn by: HDE	Checked by: CS	Scale: NTS	Date: 5/25/2023	O-RMD 36
www.tremcocpg.com				



Dryvit Technical Support: 800-556-7752

www.tremcocpg.com

Construction Products Group