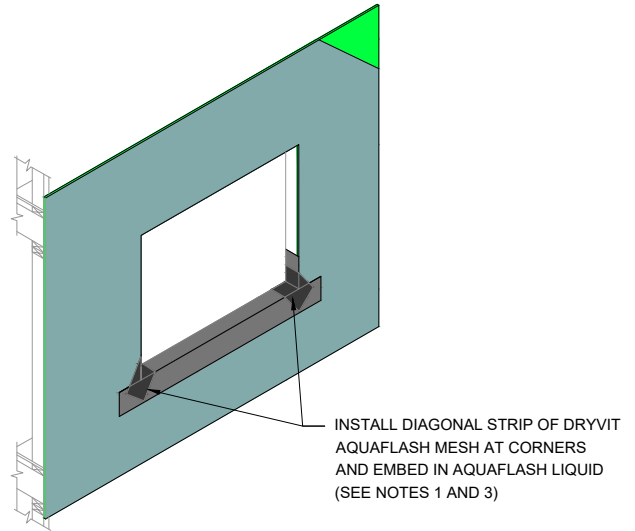
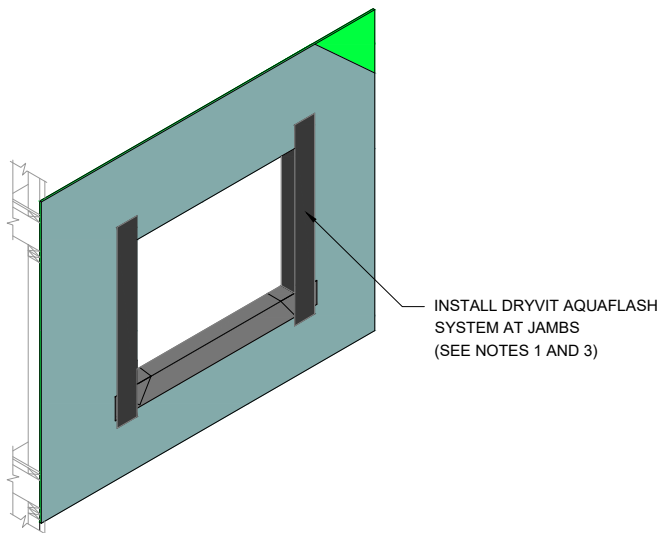


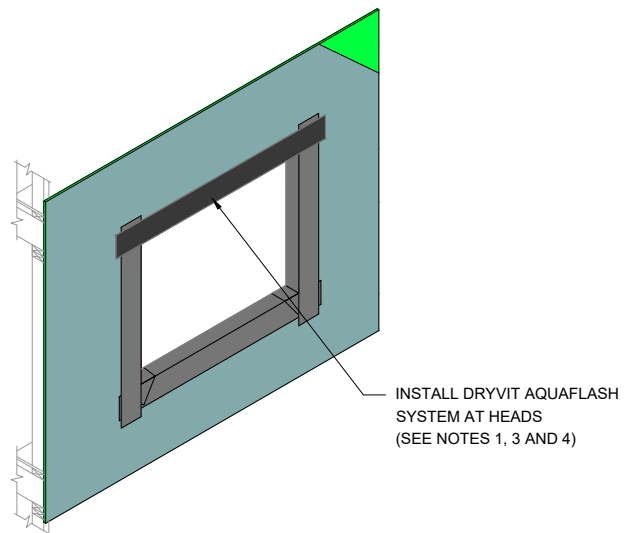
STEP #1



STEP #2



STEP #3



STEP #4

NOTE:

1. DRYVIT AQUAFLASH® SHALL EXTEND TO INTERIOR FACE OF OPENING.
2. REFER TO HEAD, SILL AND JAMB DETAILS FOR FLASHING INTEGRATION.
3. DRYVIT TREMCO EXOAIR 110AT MAY BE USED IN LIEU OF DRYVIT AQUAFLASH® SYSTEM. TREAT SURFACE WITH TREMCO DYMONIC 100 AT 40 MILS OVER EXOAIR 110AT AT FACE OF WALL WHERE IN CONTACT WITH ADHESIVE.
4. INSTALL WINDOW UNIT AND ASSOCIATED FLASHINGS PER MANUFACTURER'S RECOMMENDATIONS, CODE REQUIREMENTS AND PROJECT DOCUMENTS.
5. AQUAFLASH® SYSTEM CONSISTS OF AQUAFLASH MESH AND AQUAFLASH LIQUID.
6. FOR ADDITIONAL AIR/WATER-RESISTIVE BARRIER DETAILS, REFER TO DRYVIT PUBLICATION DS840.

The architecture, engineering, and design of the project using the Dryvit and Tremco products are the responsibility of the project's design professional. All products and systems must comply with local building codes and standards. This detail is for general information and guidance only and Dryvit and Tremco specifically disclaims any liability for the use of this detail. The project design professional determines, in its sole discretion, whether this detail or a functionally equivalent detail is best suited for the project. This detail is subject to change without notice. Contact Dryvit and Tremco to ensure you have the most recent version.

Outsulation® RMD System™



Dryvit Technical Support: 800-556-7752

Detail: Opening Preparation - System 4 AquaFlash® System^s Option

Drawn by: HDE

Checked by: CS

Scale: NTS

Date: 5/19/2023

File Name:

O-RMD 8



Construction Products Group

www.tremcocpg.com