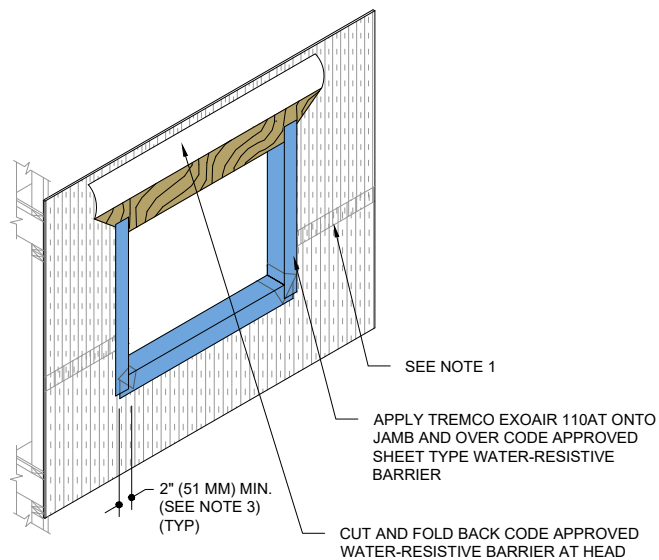
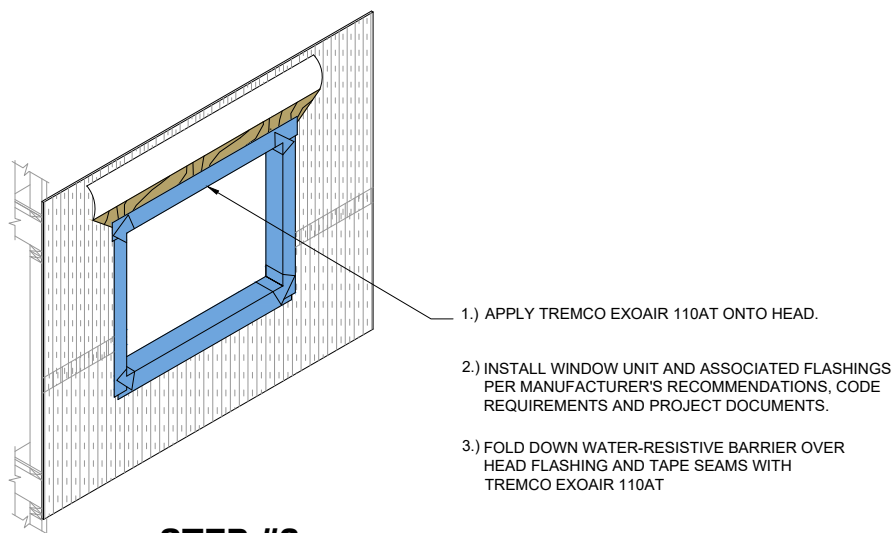


STEP #1



STEP #2



STEP #3

NOTE:

1. SHEET TYPE CODE APPROVED WATER-RESISTIVE BARRIER SHALL BE INSTALLED IN A WEATHER BOARD FASHION IN ACCORDANCE WITH CODE AND MANUFACTURER'S REQUIREMENTS.
2. OPENING WRAP SHALL EXTEND TO INTERIOR FACE OF OPENING.
3. LAP TREMCO EXOAIR 110AT MINIMUM 2" (51 MM) OVER CURB.

The architecture, engineering, and design of the project using the Dryvit and Tremco products are the responsibility of the project's design professional. All products and systems must comply with local building codes and standards. This detail is for general information and guidance only and Dryvit and Tremco specifically disclaims any liability for the use of this detail. The project design professional determines, in its sole discretion, whether this detail or a functionally equivalent detail is best suited for the project. This detail is subject to change without notice. Contact Dryvit and Tremco to ensure you have the most recent version.

Outsulation® RMD System™



Dryvit Technical Support: 800-556-7752

Detail: Opening Preparation - Sheet-Type Water-Resistive Barrier

Drawn by: HDE

Checked by: CS

Scale: NTS

Date: 5/19/2023

File Name:

O-RMD 7



Construction Products Group

www.tremcocpg.com